

Converting Colors

XYZ(52.5321, 50.4607, 50.2624)

Have a look what the booklet for
XYZ(52.5321, 50.4607, 50.2624)
contains.

XYZ(52.5838, 50.3849, 50.1338)	3
<i>Conversions</i>	4
<i>Details</i>	6
<i>Harmonies</i>	12
<i>Previews</i>	24
<i>Color Blindness Simulation</i>	28
<i>CSS Examples</i>	31

Color

**XYZ(52.5838, 50.3849,
50.1338)**

Conversions

Conversions Part 1

Format	Color
Hex	D7B4B4
RGB	215, 180, 180
RGB Percent	84%, 71%, 71%
CMY	0.1569, 0.2941, 0.2941
CMYK	0.00, 0.16, 0.16, 0.16
HSL	0°, 30%, 77%
HSV	0°, 16%, 84%
XYZ	52.5838, 50.3849, 50.1338
YIQ	190.4650, 20.8600, 7.4200

Conversions

Conversions Part 2

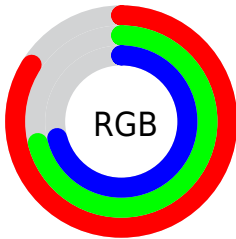
Format	Color
R _Y B	215, 180, 180
Decimal	14136500
CIE Lab	76.30, 12.60, 4.71
CIE LCh	76, 13.449, 20.494
Yxy	50.3849, 0.3435, 0.3291
Android (android.graphics.Color)	4292326580 (0xFFD7B4B4)
YUV	190.4650, -5.1592, 21.5172
Hunter-Lab	70.9823, 8.0140, 7.8119

Details

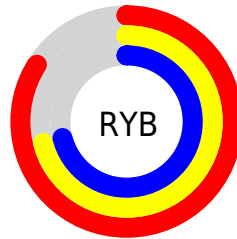
The XYZ color **52.5838, 50.3849, 50.1338** is a light color, and the websafe version is hex **CC9999**. A complement of this color would be **55.3881, 63.2089, 73.5717**, and the grayscale version is **49.2333, 51.7972, 56.4072**.

A 20% lighter version of the original color is **86.3758, 87.3070, 91.6563**, and **25.9173, 24.1846, 23.3808** is the 20% darker color. If you saturate the color by 10%, you get **46.5530, 41.5604, 38.1428**, and if you desaturate by 10%, it is **59.6303, 60.6960, 64.1407**.

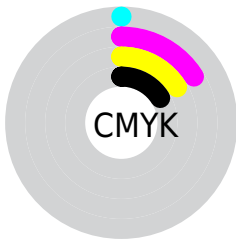
Distribution



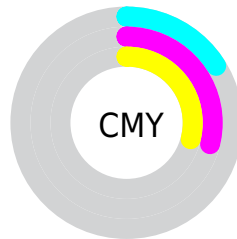
- Red (84%)
- Green (71%)
- Blue (71%)



- Red (84%)
- Yellow (71%)
- Blue (71%)



- Cyan (0%)
- Magenta (16%)
- Yellow (16%)
- Black (16%)



- Cyan (16%)
- Magenta (29%)
- Yellow (29%)

Brightness & Saturation Gradients


These gradients show how the XYZ color 52.5838, 50.3849, 50.1338 changes by changing the brightness by 10 percent. The first figure shows a shift by +10% for each color and the second figure -10%.


Similar to the brightness gradients but the following saturation gradients show a change of the XYZ color 52.5838, 50.3849, 50.1338 by changing the saturation by 10% instead.


 52.5838, 50.3849,
50.1338

 52.5838, 50.3849,
50.1338


386.9733,
388.1692, 403.9390

 37.6968, 35.7193,
35.1478

 93.1608, 90.7449,
91.7714

 25.9236, 24.2175,
23.4923


119.5815,
117.2081, 119.2601

 16.8989, 15.4950,
14.7487


150.5774,
148.3727, 151.7535

 10.2573, 9.1676,
8.4986

186.5139,
184.6229, 189.6701

 5.6334, 4.8506,
4.3233

227.7564,
226.3433, 233.4284

 2.6620, 2.1599,
1.8043

274.6703,

 0.9777, 0.6980,

273.9183, 283.4469

0.4308

327.6208,
327.7321, 340.1443

■ 0.0000, 0.0000,
0.0000

■ 52.5838, 50.3849,
50.1338

■ 52.5838, 50.3849,
50.1338

■ 46.5530, 41.5604,
38.1428

■ 59.6303, 60.6960,
64.1407

■ 41.4871, 34.1475,
28.0719

■ 67.7318, 72.5506,
80.2468

■ 37.3373, 28.0752,
19.8224

■ 76.9307, 86.0108,
98.5348

■ 34.0490, 23.2634,
13.2856

■ 81.8345, 93.1872,
108.2815

■ 31.5616, 19.6235,
8.3412

■ 29.8068, 17.0556,
4.8531

■ 28.7048, 15.4429,
2.6630

■ 28.1554, 14.6389,
1.5714

■ 28.0248, 14.4477,
1.3116

Harmonies

Analogous

The Analogous color harmony consists of three colors that are next to each other on the color wheel.



52.8404, 50.3849, 57.1896



52.5838, 50.3849, 50.1338



51.0456, 50.3849, 44.8141

Triad

The Triadic color harmony groups three colors that are evenly spaced from another and form a triangle on the color wheel.



52.5838, 50.3849, 50.1338



44.2393, 50.3849, 46.4801



47.0918, 50.3849, 69.7527

Complementary

The Complementary color scheme is a pair of colors which are on the opposite of each other on the color wheel.



52.5838, 50.3849, 50.1338



55.3881, 63.2089, 73.5717

Split Complementary

Split-complementary colors differ from the complementary color scheme. The scheme consists of three colors, the original color and two neighbors of the complement color.



44.8660, 50.3849, 66.3064



52.5838, 50.3849, 50.1338



43.2576, 50.3849, 52.5957

Square

The Square scheme is like the rectangle color scheme, but the four colors are evenly spaced on the color wheel.



52.5838, 50.3849, 50.1338



46.2091, 50.3849, 42.8369



43.4829, 50.3849, 59.8755



49.6098, 50.3849, 68.9468

Rectangle

The Rectangle color scheme consists of four colors that form a rectangle on the color wheel.



52.5838, 50.3849, 50.1338



49.5292, 50.3849, 42.7673



43.4829, 50.3849, 59.8755



46.2861, 50.3849, 69.0424

Sweetspot

The Sweet Spot groups the original color and five complimentary colors.



52.5852, 50.3872, 50.1349



89.1316, 91.3399, 97.1340



56.6118, 51.9965, 71.3430



18.9067, 19.3000, 20.4504



0.0000, 0.0000, 0.0000



20.3446, 21.4041, 23.3091

Same Dimension

The Same Dimension uses a secret algorithm to generate beautiful new colors.



52.5852, 50.3872, 50.1349



73.7333, 68.8082, 66.5219



56.3431, 57.9029, 51.3875



12.4234, 12.4210, 12.9034



16.7621, 8.6415, 0.7845



1.0111, 0.5213, 0.0473

Inverse Universe

The Inverse Universe completely reimagines the original color for something new.



55.3881, 63.2089, 73.5717



78.7100, 91.5736, 108.1348



51.1687, 54.7702, 72.1652



12.7921, 14.1076, 15.9863



21.8673, 31.9963, 43.4765



1.3190, 1.9299, 2.6223

Previews

White Background



This preview shows how the XYZ color 52.5838, 50.3849, 50.1338 looks on a white background.

Color Contrast Check

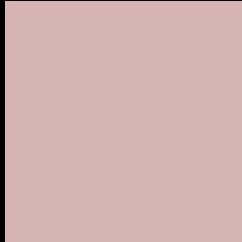
Large Text (above 18pt) WCAG AA × Fail

Any Text WCAG AA × Fail

Large Text (above 18pt) WCAG AAA × Fail

Any Text WCAG AAA × Fail

Black Background



This preview shows how the XYZ color 52.5838, 50.3849, 50.1338 looks on a black background.

Color Contrast Check

Large Text (above 18pt) WCAG AA ✓ Pass

Any Text WCAG AA ✓ Pass

Large Text (above 18pt) WCAG AAA ✓ Pass

Any Text WCAG AAA ✓ Pass

If you want to check with other color combinations, try the [Color Contrast Checker](#).

XYZ 52.5838, 50.3849, 50.1338

Background



This preview shows how black text looks on a background with the XYZ color 52.5838, 50.3849, 50.1338.



This preview shows how white text looks on a background with the XYZ color 52.5838, 50.3849,

Color Blindness Simulation

Color vision deficiency is a very complex topic, and I could not describe the different causes any better than Wikipedia does, so if you want to learn more, you should check out their [article about color blindness](#).

Dichromacy



Original Color

52.5838, 50.3849, 50.1338

Protanopia

48.6273, 50.7646, 52.5830

Deuteranopia

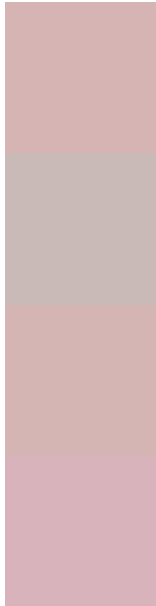
51.5445, 50.4528, 50.2017



Tritanopia

54.0501, 50.3983, 56.7483

Trichromacy



Original Color

52.5838, 50.3849, 50.1338

Protanomaly

49.9836, 50.5343, 51.9194

Deuteranomaly

51.9135, 50.3401, 50.1605

Tritanomaly

53.5161, 50.4700, 54.4980

Monochromacy



Original Color

52.5838, 50.3849, 50.1338

Achromatopsia

48.9429, 51.4918, 56.0745

Achromatomaly

49.9750, 50.8051, 53.6268

CSS Examples

Text

The CSS property to change the color of the text to XYZ 52.5838, 50.3849, 50.1338 is called "color". The color property can be set on classes, ids or directly on the HTML element.

This example shows how text in the color `rgb(215, 180, 180)` looks like.

```
.text, #text, p{  
    color:rgb(215, 180, 180)  
}
```

If you want to add a text shadow in that color use the text-shadow property, you can generate a text shadow directly with our [CSS Text Shadow Generator](#).

Here you see how black text with a 4 pixel rgb(215, 180, 180) colored shadow looks like.

```
.shadow{ text-shadow: 4px 4px 2px rgb(215, 180, 180) }
```

Border

The CSS property to change the border of an element to XYZ 52.5838, 50.3849, 50.1338 is called "border". The border property can be set on classes, ids or directly on the HTML element.

This example shows the color as border, it can be applied via the CSS property "border" or "border-color".

```
.border, #border, table{ border:4px solid rgb(215, 180, 180) }
```


If only the border color should be changed use the property `border-color`.

```
.border{ border-color:rgb(215, 180, 180) }
```

If you want to add a box shadow in that color use:

Here you see how a box with a 4 pixel `rgb(215, 180, 180)` colored shadow looks like.

```
.boxshadow{ -moz-box-shadow:4px 4px 4px  
4px rgb(215, 180, 180); -webkit-box-  
shadow:4px 4px 4px 4px rgb(215, 180, 180);  
box-shadow:4px 4px 4px 4px rgb(215, 180,  
180) }
```

Background

The CSS property to change the background color of an element to XYZ 52.5838, 50.3849, 50.1338 is called "background". The background property can be set on classes, ids or directly on the HTML element.

```
.background, #background, body{  
background: rgb(215, 180, 180) }
```

If only the background color should be changed can be used:

```
.background{ background-color: rgb(215,  
180, 180) }
```

This example shows the color as background, it is applied via the CSS property "background".

To optimize and compress your CSS code, you can use our [online CSS compressor and optimizer](#) based on csstidy. If you want to create a linear or radial gradient as background or border, check our [CSS Gradient Generator](#).

Hey! You found this booklet interesting? Support Converting Colors with the new Membership Option!

The pro membership hides all ads, plus gives you double the colors in the color bucket, and more awesome pro features!

[Learn more, Memberships starting at \\$2.50/m!](#)

**Follow me
on Twitter!**

@ConvertingColor