

Converting Colors

XYZ(52.5419, 51.2187, 48.2422)

Have a look what the booklet for
XYZ(52.5419, 51.2187, 48.2422)
contains.

XYZ(52.5015, 51.2977, 48.2086)	3
<i>Conversions</i>	4
<i>Details</i>	6
<i>Harmonies</i>	12
<i>Previews</i>	24
<i>Color Blindness Simulation</i>	28
<i>CSS Examples</i>	31

Color

**XYZ(52.5015, 51.2977,
48.2086)**

Conversions

Conversions Part 1

Format	Color
Hex	D6B7B0
RGB	214, 183, 176
RGB Percent	84%, 72%, 69%
CMY	0.1608, 0.2823, 0.3098
CMYK	0.00, 0.14, 0.18, 0.16
HSL	11°, 32%, 76%
HSV	11°, 18%, 84%
XYZ	52.5015, 51.2977, 48.2086
YIQ	191.4710, 20.7230, 4.3950

Conversions

Conversions Part 2

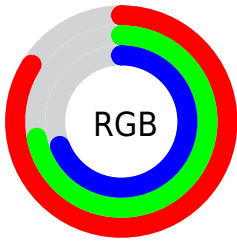
Format	Color
R_{YB}	214, 185, 176
Decimal	14071728
CIE _{Lab}	76.86, 9.99, 7.67
CIE _{LCh}	77, 12.597, 37.490
Yxy	51.2977, 0.3454, 0.3375
Android (android.graphics.Color)	4292261808 (0xFFD6B7B0)
YUV	191.4710, -7.6272, 19.7579
Hunter-Lab	71.6224, 5.5069, 10.2280

Details

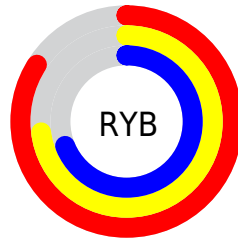
The XYZ color **52.5015, 51.2977, 48.2086** is a light color, and the websafe version is hex **FFCCCC**. A complement of this color would be **52.3545, 58.7094, 72.1914**, and the grayscale version is **49.8304, 52.4255, 57.0913**.

A 20% lighter version of the original color is **86.6720, 88.8192, 88.9196**, and **25.9188, 24.7914, 22.4879** is the 20% darker color. If you saturate the color by 10%, you get **47.1692, 43.7584, 36.7952**, and if you desaturate by 10%, it is **58.6170, 59.8683, 61.5311**.

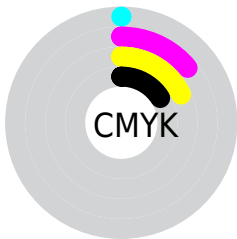
Distribution



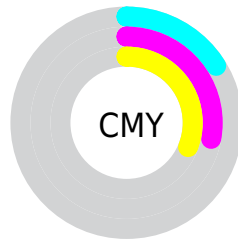
- Red (84%)
- Green (72%)
- Blue (69%)



- Red (84%)
- Yellow (73%)
- Blue (69%)



- Cyan (0%)
- Magenta (14%)
- Yellow (18%)
- Black (16%)



- Cyan (16%)
- Magenta (28%)
- Yellow (31%)

Brightness & Saturation Gradients

These gradients show how the XYZ color 52.5015, 51.2977, 48.2086 changes by changing the brightness by 10 percent. The first figure shows a shift by +10% for each color and the second figure -10%.

Similar to the brightness gradients but the following saturation gradients show a change of the XYZ color 52.5015, 51.2977, 48.2086 by changing the saturation by 10% instead.

■ 52.5015, 51.2977,
48.2086

■ 52.5015, 51.2977,
48.2086

386.6619,
391.7193, 396.1509

■ 37.6308, 36.4456,
33.6309

■ 93.0403, 92.0947,
88.8837

■ 25.8722, 24.7785,
22.3352

119.4391,
118.8083, 115.8182

■ 16.8602, 15.9121,
13.9027

150.4114,
150.2446, 147.7087

■ 10.2296, 9.4620,
7.9151

186.3225,
186.7879, 184.9739

■ 5.6149, 5.0437,
3.9536

227.5377,
228.8226, 228.0321

■ 2.6508, 2.2729,
1.5999

274.4225,

■ 0.9719, 0.7593,

276.7332, 277.3020

0.2908

327.3421,
330.9039, 333.2021

■ 0.0000, 0.0000,
0.0000

■ 52.5015, 51.2977,
48.2086

■ 52.5015, 51.2977,
48.2086

■ 47.1692, 43.7584,
36.7952

■ 58.6170, 59.8683,
61.5311

■ 42.5839, 37.2045,
27.2000

■ 65.5415, 69.4998,
76.8413

■ 38.7131, 31.5973,
19.3297

■ 73.3049, 80.2295,
94.2174

■ 35.5198, 26.8923,
13.0812

■ 80.8527, 91.6582,
108.0381

■ 32.9639, 23.0419,
8.3405

■ 81.5417, 93.0362,
108.2678

■ 31.0007, 19.9938,
4.9786

■ 29.5794, 17.6896,
2.8445

■ 28.6351, 16.0608,
1.7287

■ 28.4719, 15.7766,
1.5446

Harmonies

Analogous

The Analogous color harmony consists of three colors that are next to each other on the color wheel.



53.4649, 51.2977, 54.1535



52.5015, 51.2977, 48.2086



50.5406, 51.2977, 44.5389

Triad

The Triadic color harmony groups three colors that are evenly spaced from another and form a triangle on the color wheel.



52.5015, 51.2977, 48.2086



44.6267, 51.2977, 50.9577



49.3595, 51.2977, 69.9720

Complementary

The Complementary color scheme is a pair of colors which are on the opposite of each other on the color wheel.



52.5015, 51.2977, 48.2086



52.3545, 58.7094, 72.1914

Split Complementary

Split-complementary colors differ from the complementary color scheme. The scheme consists of three colors, the original color and two neighbors of the complement color.



47.0157, 51.2977, 68.9405



52.5015, 51.2977, 48.2086



44.3337, 51.2977, 57.5907

Square

The Square scheme is like the rectangle color scheme, but the four colors are evenly spaced on the color wheel.



52.5015, 51.2977, 48.2086



46.0085, 51.2977, 46.0332



45.1948, 51.2977, 64.2688



51.6127, 51.2977, 66.9819

Rectangle

The Rectangle color scheme consists of four colors that form a rectangle on the color wheel.



52.5015, 51.2977, 48.2086



48.9588, 51.2977, 43.6915



45.1948, 51.2977, 64.2688



48.5556, 51.2977, 70.0880

Sweetspot

The Sweet Spot groups the original color and five complimentary colors.



52.5029, 51.3000, 48.2097



89.8361, 92.7489, 97.3689



54.5240, 49.8541, 65.8024



19.0771, 19.6410, 20.5072



0.0000, 0.0000, 0.0000



20.3446, 21.4041, 23.3091

Same Dimension

The Same Dimension uses a secret algorithm to generate beautiful new colors.



52.5029, 51.3000, 48.2097



75.2095, 72.2460, 65.5172



56.6812, 59.6567, 49.6025



12.6066, 12.7874, 12.9645



17.2648, 9.6469, 0.9521



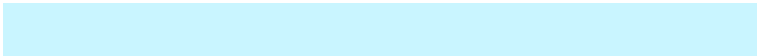
1.0977, 0.6946, 0.0762

Inverse Universe

The Inverse Universe completely reimagines the original color for something new.



52.3545, 58.7094, 72.1914



74.9502, 85.0834, 107.0802



48.0330, 50.0665, 70.7509



12.5885, 13.7005, 15.9185



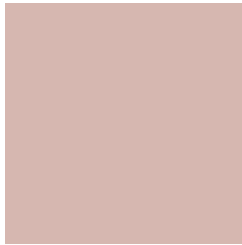
16.6211, 21.5040, 41.7278



1.0542, 1.4003, 2.5340

Previews

White Background



This preview shows how the XYZ color 52.5015, 51.2977, 48.2086 looks on a white background.

Color Contrast Check

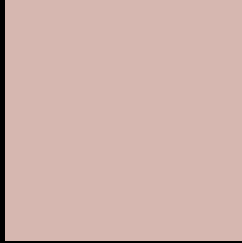
Large Text (above 18pt) WCAG AA × Fail

Any Text WCAG AA × Fail

Large Text (above 18pt) WCAG AAA × Fail

Any Text WCAG AAA × Fail

Black Background



This preview shows how the XYZ color 52.5015, 51.2977, 48.2086 looks on a black background.

Color Contrast Check

Large Text (above 18pt) WCAG AA ✓ Pass

Any Text WCAG AA ✓ Pass

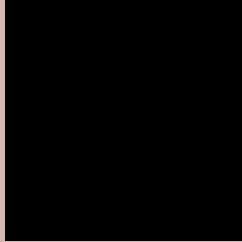
Large Text (above 18pt) WCAG AAA ✓ Pass

Any Text WCAG AAA ✓ Pass

If you want to check with other color combinations, try the [Color Contrast Checker](#).

XYZ 52.5015, 51.2977, 48.2086

Background



This preview shows how black text looks on a background with the XYZ color 52.5015, 51.2977, 48.2086.



This preview shows how white text looks on a background with the XYZ color 52.5015, 51.2977,

Color Blindness Simulation

Color vision deficiency is a very complex topic, and I could not describe the different causes any better than Wikipedia does, so if you want to learn more, you should check out their [article about color blindness](#).

Dichromacy



Original Color

52.5015, 51.2977, 48.2086

Protanopia

49.0992, 51.3856, 49.9784

Deuteranopia

52.2105, 51.1477, 48.1950



Tritanopia

54.3778, 51.1365, 58.0432

Trichromacy



Original Color

52.5015, 51.2977, 48.2086

Protanomaly

50.4348, 51.4515, 49.3924

Deuteranomaly

52.2105, 51.1477, 48.1950

Tritanomaly

53.5178, 51.0827, 54.0530

Monochromacy



Original Color

52.5015, 51.2977, 48.2086

Achromatopsia

49.5206, 52.0996, 56.7364

Achromatomaly

50.3993, 51.6537, 53.7682

CSS Examples

Text

The CSS property to change the color of the text to XYZ 52.5015, 51.2977, 48.2086 is called "color". The color property can be set on classes, ids or directly on the HTML element.

This example shows how text in the color rgb(214, 183, 176) looks like.

```
.text, #text, p{  
    color:rgb(214, 183, 176)  
}
```

If you want to add a text shadow in that color use the text-shadow property, you can generate a text shadow directly with our [CSS Text Shadow Generator](#).

Here you see how black text with a 4 pixel rgb(214, 183, 176) colored shadow looks like.

```
.shadow{ text-shadow: 4px 4px 2px rgb(214, 183, 176) }
```

Border

The CSS property to change the border of an element to XYZ 52.5015, 51.2977, 48.2086 is called "border". The border property can be set on classes, ids or directly on the HTML element.

This example shows the color as border, it can be applied via the CSS property "border" or "border-color".

```
.border, #border, table{ border:4px solid rgb(214, 183, 176) }
```


If only the border color should be changed use the property border-color.

```
.border{ border-color:rgb(214, 183, 176) }
```

If you want to add a box shadow in that color use:

Here you see how a box with a 4 pixel rgb(214, 183, 176) colored shadow looks like.

```
.boxshadow{ -moz-box-shadow:4px 4px 4px  
4px rgb(214, 183, 176); -webkit-box-  
shadow:4px 4px 4px 4px rgb(214, 183, 176);  
box-shadow:4px 4px 4px 4px rgb(214, 183,  
176) }
```

Background

The CSS property to change the background color of an element to XYZ 52.5015, 51.2977, 48.2086 is called "background". The background property can be set on classes, ids or directly on the HTML element.

```
.background, #background, body{  
background: rgb(214, 183, 176) }
```

If only the background color should be changed can be used:

```
.background{ background-color: rgb(214,  
183, 176) }
```

This example shows the color as background, it is applied via the CSS property "background".

To optimize and compress your CSS code, you can use our [online CSS compressor and optimizer](#) based on csstidy. If you want to create a linear or radial gradient as background or border, check our [CSS Gradient Generator](#).

Hey! You found this booklet interesting? Support Converting Colors with the new Membership Option!

The pro membership hides all ads, plus gives you double the colors in the color bucket, and more awesome pro features!

[Learn more, Memberships starting at \\$2.50/m!](#)

**Follow me
on Twitter!**

@ConvertingColor