

Converting Colors

XYZ(52.5783, 52.7770, 53.8702)

Have a look what the booklet for
XYZ(52.5783, 52.7770, 53.8702)
contains.

XYZ(52.5783, 52.7770, 53.8702)	3
<i>Conversions</i>	4
<i>Details</i>	6
<i>Harmonies</i>	12
<i>Previews</i>	24
<i>Color Blindness Simulation</i>	28
<i>CSS Examples</i>	31

Color

**XYZ(52.5783, 52.7770,
53.8702)**

Conversions

Conversions Part 1

Format	Color
Hex	CFBCBA
RGB	207, 188, 186
RGB Percent	81%, 74%, 73%
CMY	0.1882, 0.2627, 0.2706
CMYK	0.00, 0.09, 0.10, 0.19
HSL	6°, 18%, 77%
HSV	6°, 10%, 81%
XYZ	52.5783, 52.7770, 53.8702
YIQ	193.4530, 11.9660, 3.4060

Conversions

Conversions Part 2

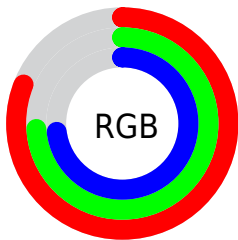
Format	Color
R _Y B	207, 188, 186
Decimal	13614266
CIE Lab	77.74, 6.38, 3.44
CIE LCh	78, 7.253, 28.341
Yxy	52.7770, 0.3302, 0.3315
Android (android.graphics.Color)	4291804346 (0xFFCFBCBA)
YUV	193.4530, -3.6743, 11.8807
Hunter-Lab	72.6478, 2.0545, 6.8884

Details

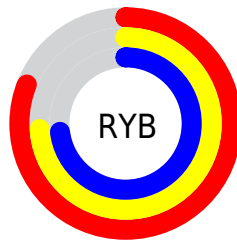
The XYZ color **52.5783, 52.7770, 53.8702** is a light color, and the websafe version is hex **CCCCCC**. A complement of this color would be **53.3434, 58.6058, 67.5327**, and the grayscale version is **50.9724, 53.6270, 58.3998**.

A 20% lighter version of the original color is **89.6177, 92.3722, 97.1107**, and **26.0345, 25.7937, 25.7968** is the 20% darker color. If you saturate the color by 10%, you get **46.7915, 44.4733, 41.8593**, and if you desaturate by 10%, it is **59.2059, 62.2509, 67.7355**.

Distribution



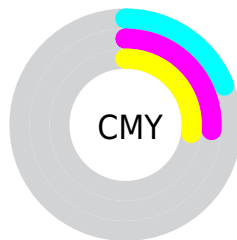
- Red (81%)
- Green (74%)
- Blue (73%)



- Red (81%)
- Yellow (74%)
- Blue (73%)



- Cyan (0%)
- Magenta (9%)
- Yellow (10%)
- Black (19%)



- Cyan (19%)
- Magenta (26%)
- Yellow (27%)

Brightness & Saturation Gradients

These gradients show how the XYZ color 52.5783, 52.7770, 53.8702 changes by changing the brightness by 10 percent. The first figure shows a shift by +10% for each color and the second figure -10%.

Similar to the brightness gradients but the following saturation gradients show a change of the XYZ color 52.5783, 52.7770, 53.8702 by changing the saturation by 10% instead.

■ 52.5783, 52.7770,
53.8702

■ 52.5783, 52.7770,
53.8702

386.9525,
397.4290, 418.7755

■ 37.6924, 37.6248,
38.1054

■ 93.1527, 94.2761,
97.3381

■ 25.9201, 25.6916,
25.7621

119.5720,
121.3919, 125.8783

■ 16.8963, 16.5931,
16.4216

150.5663,
153.2642, 159.5141

■ 10.2554, 9.9448,
9.6654

186.5011,
190.2775, 198.6640

■ 5.6322, 5.3624,
5.0750

227.7418,
232.8163, 243.7466

■ 2.6613, 2.4614,
2.2318

274.6537,

■ 0.9773, 0.8572,

281.2649, 295.1803

0.6926

327.6022,
336.0076, 353.3837

■ 0.0000, 0.0000,
0.0000

■ 52.5783, 52.7770,
53.8702

■ 52.5783, 52.7770,
53.8702

■ 46.7915, 44.4733,
41.8593

■ 59.2059, 62.2509,
67.7355

■ 41.8076, 37.2877,
31.6209

■ 66.7015, 72.9307,
83.5255

■ 37.5924, 31.1746,
23.0720

■ 75.0965, 84.8591,
101.3111

■ 34.1075, 26.0824,
16.1217

■ 79.5424, 92.0055,
108.1743

■ 31.3111, 21.9554,
10.6705

■ 29.1571, 18.7325,
6.6078

■ 27.5940, 16.3456,
3.8077

■ 26.5619, 14.7168,
2.1213

■ 25.9782, 13.7571,
1.2862

Harmonies

Analogous

The Analogous color harmony consists of three colors that are next to each other on the color wheel.



52.9119, 52.7770, 57.6895



52.5783, 52.7770, 53.8702



51.5942, 52.7770, 51.1283

Triad

The Triadic color harmony groups three colors that are evenly spaced from another and form a triangle on the color wheel.



52.5783, 52.7770, 53.8702



47.8985, 52.7770, 53.4994



50.0848, 52.7770, 65.5506

Complementary

The Complementary color scheme is a pair of colors which are on the opposite of each other on the color wheel.



52.5783, 52.7770, 53.8702



53.3434, 58.6058, 67.5327

Split Complementary

Split-complementary colors differ from the complementary color scheme. The scheme consists of three colors, the original color and two neighbors of the complement color.



48.7584, 52.7770, 64.3052



52.5783, 52.7770, 53.8702



47.5109, 52.7770, 57.2415

Square

The Square scheme is like the rectangle color scheme, but the four colors are evenly spaced on the color wheel.



52.5783, 52.7770, 53.8702



48.8915, 52.7770, 50.9214



47.8227, 52.7770, 61.2166



51.4563, 52.7770, 64.5469

Rectangle

The Rectangle color scheme consists of four colors that form a rectangle on the color wheel.



52.5783, 52.7770, 53.8702



50.7109, 52.7770, 50.2164



47.8227, 52.7770, 61.2166



49.6190, 52.7770, 65.3800

Sweetspot

The Sweet Spot groups the original color and five complimentary colors.



52.5798, 52.7793, 53.8713



91.6745, 95.1810, 101.8191



54.3414, 52.8039, 65.2447



19.4336, 20.1034, 21.3986



0.0000, 0.0000, 0.0000



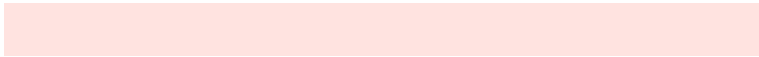
20.3446, 21.4041, 23.3091

Same Dimension

The Same Dimension uses a secret algorithm to generate beautiful new colors.



52.5798, 52.7793, 53.8713



82.3054, 81.7767, 82.2523



54.8470, 57.3139, 54.6271



11.8982, 11.9870, 12.2987



16.3985, 8.7301, 0.8208



0.9487, 0.5518, 0.0565

Inverse Universe

The Inverse Universe completely reimagines the original color for something new.



53.3434, 58.6058, 67.5327



83.7503, 92.8027, 108.1063



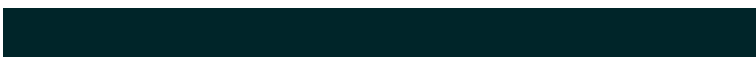
50.9721, 53.8632, 66.7423



12.0580, 13.2062, 15.1572



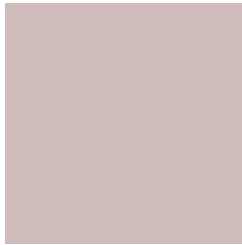
18.3636, 25.3737, 41.1222



1.0554, 1.4761, 2.3089

Previews

White Background



This preview shows how the XYZ color 52.5783, 52.7770, 53.8702 looks on a white background.

Color Contrast Check

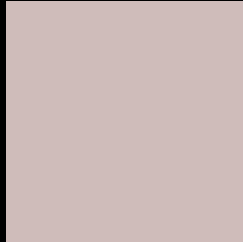
Large Text (above 18pt) WCAG AA × Fail

Any Text WCAG AA × Fail

Large Text (above 18pt) WCAG AAA × Fail

Any Text WCAG AAA × Fail

Black Background



This preview shows how the XYZ color 52.5783, 52.7770, 53.8702 looks on a black background.

Color Contrast Check

Large Text (above 18pt) WCAG AA ✓ Pass

Any Text WCAG AA ✓ Pass

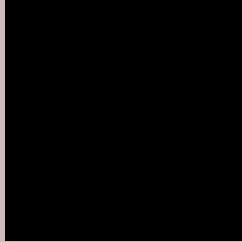
Large Text (above 18pt) WCAG AAA ✓ Pass

Any Text WCAG AAA ✓ Pass

If you want to check with other color combinations, try the [Color Contrast Checker](#).

XYZ 52.5783, 52.7770, 53.8702

Background



This preview shows how black text looks on a background with the XYZ color 52.5783, 52.7770, 53.8702.



This preview shows how white text looks on a background with the XYZ color 52.5783, 52.7770,

Color Blindness Simulation

Color vision deficiency is a very complex topic, and I could not describe the different causes any better than Wikipedia does, so if you want to learn more, you should check out their [article about color blindness](#).

Dichromacy



Original Color

52.5783, 52.7770, 53.8702

Protanopia

50.7339, 52.7628, 55.0872

Deuteranopia

53.8624, 52.8091, 53.8087



Tritanopia

54.2787, 52.8433, 61.9826

Trichromacy



Original Color

52.5783, 52.7770, 53.8702

Protanomaly

51.4705, 52.8323, 54.4986

Deuteranomaly

53.4972, 52.9347, 53.8522

Tritanomaly

53.6331, 52.8907, 59.0119

Monochromacy



Original Color

52.5783, 52.7770, 53.8702

Achromatopsia

50.6879, 53.3276, 58.0738

Achromatomaly

51.2138, 52.9851, 56.2431

CSS Examples

Text

The CSS property to change the color of the text to XYZ 52.5783, 52.7770, 53.8702 is called "color". The color property can be set on classes, ids or directly on the HTML element.

This example shows how text in the color rgb(207, 188, 186) looks like.

```
.text, #text, p{  
    color:rgb(207, 188, 186)  
}
```

If you want to add a text shadow in that color use the text-shadow property, you can generate a text shadow directly with our [CSS Text Shadow Generator](#).

Here you see how black text with a 4 pixel rgb(207, 188, 186) colored shadow looks like.

```
.shadow{ text-shadow: 4px 4px 2px rgb(207, 188, 186) }
```

Border

The CSS property to change the border of an element to XYZ 52.5783, 52.7770, 53.8702 is called "border". The border property can be set on classes, ids or directly on the HTML element.

This example shows the color as border, it can be applied via the CSS property "border" or "border-color".

```
.border, #border, table{ border:4px solid rgb(207, 188, 186) }
```


If only the border color should be changed use the property `border-color`.

```
.border{ border-color:rgb(207, 188, 186) }
```

If you want to add a box shadow in that color use:

Here you see how a box with a 4 pixel `rgb(207, 188, 186)` colored shadow looks like.

```
.boxshadow{ -moz-box-shadow:4px 4px 4px  
4px rgb(207, 188, 186); -webkit-box-  
shadow:4px 4px 4px 4px rgb(207, 188, 186);  
box-shadow:4px 4px 4px 4px rgb(207, 188,  
186) }
```

Background

The CSS property to change the background color of an element to XYZ 52.5783, 52.7770, 53.8702 is called "background". The background property can be set on classes, ids or directly on the HTML element.

```
.background, #background, body{  
background: rgb(207, 188, 186) }
```

If only the background color should be changed can be used:

```
.background{ background-color: rgb(207,  
188, 186) }
```

This example shows the color as background, it is applied via the CSS property "background".

To optimize and compress your CSS code, you can use our [online CSS compressor and optimizer](#) based on csstidy. If you want to create a linear or radial gradient as background or border, check our [CSS Gradient Generator](#).

Hey! You found this booklet interesting? Support Converting Colors with the new Membership Option!

The pro membership hides all ads, plus gives you double the colors in the color bucket, and more awesome pro features!

[Learn more, Memberships starting at \\$2.50/m!](#)

**Follow me
on Twitter!**

@ConvertingColor