

Converting Colors

XYZ(52.6185, 50.3717, 51.2833)

Have a look what the booklet for
XYZ(52.6185, 50.3717, 51.2833)
contains.

XYZ(52.4963, 50.3161, 51.2011)	3
<i>Conversions</i>	4
<i>Details</i>	6
<i>Harmonies</i>	12
<i>Previews</i>	24
<i>Color Blindness Simulation</i>	28
<i>CSS Examples</i>	31

Color

**XYZ(52.4963, 50.3161,
51.2011)**

Conversions

Conversions Part 1

Format	Color
Hex	D6B4B6
RGB	214, 180, 182
RGB Percent	84%, 71%, 71%
CMY	0.1608, 0.2941, 0.2863
CMYK	0.00, 0.16, 0.15, 0.16
HSL	356°, 29%, 77%
HSV	356°, 16%, 84%
XYZ	52.4963, 50.3161, 51.2011
YIQ	190.3940, 19.6220, 7.8300

Conversions

Conversions Part 2

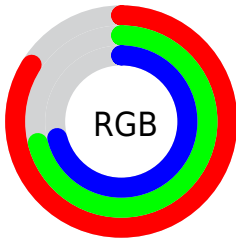
Format	Color
R _Y B	214, 180, 182
Decimal	14070966
CIE Lab	76.26, 12.55, 3.55
CIE LCh	76, 13.043, 15.785
Yxy	50.3161, 0.3409, 0.3267
Android (android.graphics.Color)	4292261046 (0xFFD6B4B6)
YUV	190.3940, -4.1382, 20.7025
Hunter-Lab	70.9338, 7.9690, 6.8573

Details

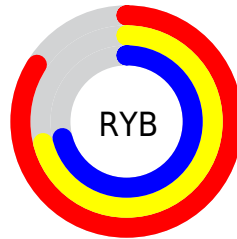
The XYZ color **52.4963, 50.3161, 51.2011** is a light color, and the websafe version is hex **CC9999**. A complement of this color would be **54.7546, 62.5511, 71.4781**, and the grayscale version is **49.1871, 51.7486, 56.3543**.

A 20% lighter version of the original color is **86.6681, 87.4240, 93.1955**, and **25.8499, 24.1347, 24.0649** is the 20% darker color. If you saturate the color by 10%, you get **46.5710, 41.5605, 39.6836**, and if you desaturate by 10%, it is **59.3908, 60.5299, 64.5203**.

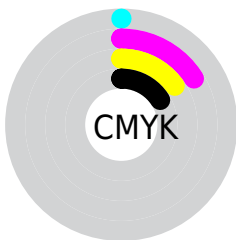
Distribution



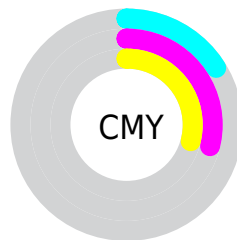
- Red (84%)
- Green (71%)
- Blue (71%)



- Red (84%)
- Yellow (71%)
- Blue (71%)



- Cyan (0%)
- Magenta (16%)
- Yellow (15%)
- Black (16%)





- Cyan (16%)
- Magenta (29%)
- Yellow (29%)

Brightness & Saturation Gradients


These gradients show how the XYZ color 52.4963, 50.3161, 51.2011 changes by changing the brightness by 10 percent. The first figure shows a shift by +10% for each color and the second figure -10%.


Similar to the brightness gradients but the following saturation gradients show a change of the XYZ color 52.4963, 50.3161, 51.2011 by changing the saturation by 10% instead.


 52.4963, 50.3161,
51.2011

 52.4963, 50.3161,
51.2011


386.6422,
387.9008, 408.2134

 37.6267, 35.6646,
35.9908

 93.0327, 90.6430,
93.3665

 25.8690, 24.1753,
24.1375


119.4301,
117.0873, 121.1587

 16.8578, 15.4637,
15.2225


150.4009,
148.2313, 153.9820

 10.2278, 9.1455,
8.8273

186.3104,
184.4594, 192.2549

 5.6137, 4.8362,
4.5335

227.5239,
226.1560, 236.3960

 2.6501, 2.1515,
1.9223

274.4068,

 0.9715, 0.6933,

273.7055, 286.8237

0.5069

327.3244,
327.4923, 343.9567

■ 0.0000, 0.0000,
0.0000

■ 52.4963, 50.3161,
51.2011

■ 52.4963, 50.3161,
51.2011

■ 46.5710, 41.5605,
39.6836

■ 59.3908, 60.5299,
64.5203

■ 41.5676, 34.1904,
29.8873

■ 67.2910, 72.2571,
79.7106

■ 37.4410, 28.1367,
21.7307

■ 76.2363, 85.5582,
96.8414

■ 34.1405, 23.3219,
15.1240

■ 81.5417, 93.0362,
108.2678

■ 31.6105, 19.6603,
9.9692

■ 29.7882, 17.0555,
6.1567

■ 28.6014, 15.3953,
3.5616

■ 27.9613, 14.5410,
2.0353

■ 27.8016, 14.3242,
1.6657

Harmonies

Analogous

The Analogous color harmony consists of three colors that are next to each other on the color wheel.



52.5318, 50.3161, 58.1620



52.4963, 50.3161, 51.2011



51.1809, 50.3161, 45.6837

Triad

The Triadic color harmony groups three colors that are evenly spaced from another and form a triangle on the color wheel.



52.4963, 50.3161, 51.2011



44.5301, 50.3161, 45.9153



46.6777, 50.3161, 68.9147

Complementary

The Complementary color scheme is a pair of colors which are on the opposite of each other on the color wheel.



52.4963, 50.3161, 51.2011



54.7546, 62.5511, 71.4781

Split Complementary

Split-complementary colors differ from the complementary color scheme. The scheme consists of three colors, the original color and two neighbors of the complement color.



44.6171, 50.3161, 65.0229



52.4963, 50.3161, 51.2011



43.4061, 50.3161, 51.5426

Square

The Square scheme is like the rectangle color scheme, but the four colors are evenly spaced on the color wheel.



52.4963, 50.3161, 51.2011



46.5554, 50.3161, 42.8142



43.4374, 50.3161, 58.5338



49.1154, 50.3161, 68.8035

Rectangle

The Rectangle color scheme consists of four colors that form a rectangle on the color wheel.



52.4963, 50.3161, 51.2011



49.7800, 50.3161, 43.3917



43.4374, 50.3161, 58.5338



45.9198, 50.3161, 68.0177

Sweetspot

The Sweet Spot groups the original color and five complimentary colors.



52.4977, 50.3184, 51.2022



89.2440, 91.3842, 97.7281



55.5348, 51.4573, 70.6240



18.9339, 19.3107, 20.5941



0.0000, 0.0000, 0.0000



20.3446, 21.4041, 23.3091

Same Dimension

The Same Dimension uses a secret algorithm to generate beautiful new colors.



52.4977, 50.3184, 51.2022



75.0015, 70.2909, 70.1926



55.4266, 56.5040, 51.1679



12.4525, 12.4325, 13.0573



16.8169, 8.6631, 1.0738



1.0249, 0.5268, 0.1207

Inverse Universe

The Inverse Universe completely reimagines the original color for something new.



52.4977, 50.3184, 51.2022



75.0015, 70.2909, 70.1926



51.4468, 55.5299, 71.6255



12.4525, 12.4325, 13.0573



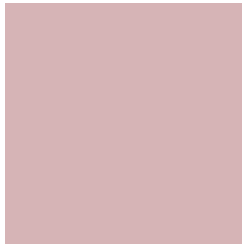
16.8169, 8.6631, 1.0738



1.0249, 0.5268, 0.1207

Previews

White Background



This preview shows how the XYZ color 52.4963, 50.3161, 51.2011 looks on a white background.

Color Contrast Check

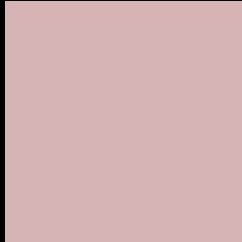
Large Text (above 18pt) WCAG AA × Fail

Any Text WCAG AA × Fail

Large Text (above 18pt) WCAG AAA × Fail

Any Text WCAG AAA × Fail

Black Background



This preview shows how the XYZ color 52.4963, 50.3161, 51.2011 looks on a black background.

Color Contrast Check

Large Text (above 18pt) WCAG AA ✓ Pass

Any Text WCAG AA ✓ Pass

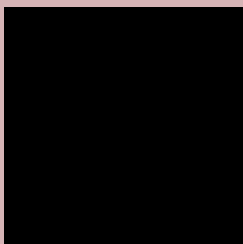
Large Text (above 18pt) WCAG AAA ✓ Pass

Any Text WCAG AAA ✓ Pass

If you want to check with other color combinations, try the [Color Contrast Checker](#).

XYZ 52.4963, 50.3161, 51.2011

Background



This preview shows how black text looks on a background with the XYZ color 52.4963, 50.3161, 51.2011.



This preview shows how white text looks on a background with the XYZ color 52.4963, 50.3161,

Color Blindness Simulation

Color vision deficiency is a very complex topic, and I could not describe the different causes any better than Wikipedia does, so if you want to learn more, you should check out their [article about color blindness](#).

Dichromacy



Original Color

52.4963, 50.3161, 51.2011

Protanopia

48.3715, 50.2923, 53.6123

Deuteranopia

51.4659, 50.3886, 51.2694



Tritanopia

53.4592, 50.0936, 56.7206

Trichromacy



Original Color

52.4963, 50.3161, 51.2011

Protanomaly

49.7169, 50.0631, 52.9417

Deuteranomaly

51.8313, 50.2740, 51.2280

Tritanomaly

53.2215, 50.3181, 54.4842

Monochromacy



Original Color

52.4963, 50.3161, 51.2011

Achromatopsia

48.9429, 51.4918, 56.0745

Achromatomaly

50.0817, 50.8478, 54.1887

CSS Examples

Text

The CSS property to change the color of the text to XYZ 52.4963, 50.3161, 51.2011 is called "color". The color property can be set on classes, ids or directly on the HTML element.

This example shows how text in the color rgb(214, 180, 182) looks like.

```
.text, #text, p{  
    color:rgb(214, 180, 182)  
}
```

If you want to add a text shadow in that color use the text-shadow property, you can generate a text shadow directly with our [CSS Text Shadow Generator](#).

Here you see how black text with a 4 pixel rgb(214, 180, 182) colored shadow looks like.

```
.shadow{ text-shadow: 4px 4px 2px rgb(214, 180, 182) }
```

Border

The CSS property to change the border of an element to XYZ 52.4963, 50.3161, 51.2011 is called "border". The border property can be set on classes, ids or directly on the HTML element.

This example shows the color as border, it can be applied via the CSS property "border" or "border-color".

```
.border, #border, table{ border:4px solid rgb(214, 180, 182) }
```


If only the border color should be changed use the property `border-color`.

```
.border{ border-color:rgb(214, 180, 182) }
```

If you want to add a box shadow in that color use:

Here you see how a box with a 4 pixel `rgb(214, 180, 182)` colored shadow looks like.

```
.boxshadow{ -moz-box-shadow:4px 4px 4px  
4px rgb(214, 180, 182); -webkit-box-  
shadow:4px 4px 4px 4px rgb(214, 180, 182);  
box-shadow:4px 4px 4px 4px rgb(214, 180,  
182) }
```

Background

The CSS property to change the background color of an element to XYZ 52.4963, 50.3161, 51.2011 is called "background". The background property can be set on classes, ids or directly on the HTML element.

```
.background, #background, body{  
background: rgb(214, 180, 182) }
```

If only the background color should be changed can be used:

```
.background{ background-color: rgb(214,  
180, 182) }
```

This example shows the color as background, it is applied via the CSS property "background".

To optimize and compress your CSS code, you can use our [online CSS compressor and optimizer](#) based on csstidy. If you want to create a linear or radial gradient as background or border, check our [CSS Gradient Generator](#).

Hey! You found this booklet interesting? Support Converting Colors with the new Membership Option!

The pro membership hides all ads, plus gives you double the colors in the color bucket, and more awesome pro features!

[Learn more, Memberships starting at \\$2.50/m!](#)

**Follow me
on Twitter!**

@ConvertingColor