

Converting Colors

XYZ(52.6270, 52.7213, 60.3690)

Have a look what the booklet for
XYZ(52.6270, 52.7213, 60.3690)
contains.

XYZ(52.6899, 52.6942, 60.2173)	3
<i>Conversions</i>	4
<i>Details</i>	6
<i>Harmonies</i>	12
<i>Previews</i>	24
<i>Color Blindness Simulation</i>	28
<i>CSS Examples</i>	31

Color

**XYZ(52.6899, 52.6942,
60.2173)**

Conversions

Conversions Part 1

Format	Color
Hex	CBBCC5
RGB	203, 188, 197
RGB Percent	80%, 74%, 77%
CMY	0.2039, 0.2627, 0.2274
CMYK	0.00, 0.07, 0.03, 0.20
HSL	324°, 13%, 77%
HSV	324°, 7%, 80%
XYZ	52.6899, 52.6942, 60.2173
YIQ	193.5110, 6.0510, 5.9790

Conversions

Conversions Part 2

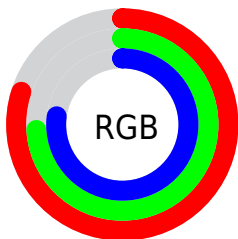
Format	Color
R _Y B	203, 188, 197
Decimal	13352133
CIE Lab	77.69, 6.89, -2.62
CIE LCh	78, 7.369, 339.134
Yxy	52.6942, 0.3182, 0.3182
Android (android.graphics.Color)	4291542213 (0xFFCBBCC5)
YUV	193.5110, 1.7201, 8.3219
Hunter-Lab	72.5908, 2.5301, 1.6298

Details

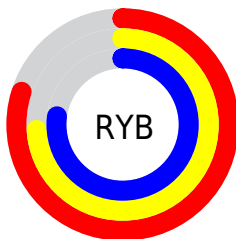
The XYZ color **52.6899, 52.6942, 60.2173** is a light color, and the websafe version is hex **CCCCCC**. A complement of this color would be **51.8346, 57.2997, 59.3697**, and the grayscale version is **50.9783, 53.6332, 58.4065**.

A 20% lighter version of the original color is **91.4801, 93.1171, 106.9178**, and **26.0163, 25.7007, 29.5761** is the 20% darker color. If you saturate the color by 10%, you get **47.7494, 44.2619, 54.1023**, and if you desaturate by 10%, it is **58.2936, 62.3710, 66.8021**.

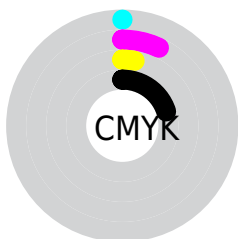
Distribution



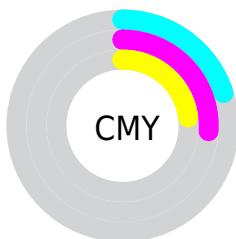
- Red (80%)
- Green (74%)
- Blue (77%)



- Red (80%)
- Yellow (74%)
- Blue (77%)



- Cyan (0%)
- Magenta (7%)
- Yellow (3%)
- Black (20%)



- Cyan (20%)
- Magenta (26%)
- Yellow (23%)

Brightness & Saturation Gradients

These gradients show how the XYZ color 52.6899, 52.6942, 60.2173 changes by changing the brightness by 10 percent. The first figure shows a shift by +10% for each color and the second figure -10%.

Similar to the brightness gradients but the following saturation gradients show a change of the XYZ color 52.6899, 52.6942, 60.2173 by changing the saturation by 10% instead.

■ 52.6899, 52.6942,
60.2173

■ 52.6899, 52.6942,
60.2173

387.3746,
397.1108, 443.2251

■ 37.7818, 37.5587,
43.1674

■ 93.3161, 94.1542,
106.6913

■ 25.9898, 25.6404,
29.6841

119.7649,
121.2476, 136.9524

■ 16.9486, 16.5548,
19.3489

150.7913,
153.0956, 172.4543

■ 10.2930, 9.9176,
11.7433

186.7606,
190.0828, 213.6156

■ 5.6574, 5.3443,
6.4487

228.0383,
232.5935, 260.8548

■ 2.6766, 2.4507,
3.0466

274.9896,

■ 0.9851, 0.8518,

281.0122, 314.5904

1.1185

327.9799,
335.7231, 375.2410

■ 0.0000, 0.0000,
0.0000

■ 52.6899, 52.6942,
60.2173

■ 52.6899, 52.6942,
60.2173

■ 47.7494, 44.2619,
54.1023

■ 58.2936, 62.3710,
66.8021

■ 43.4413, 37.0164,
48.4410

■ 64.5805, 73.3336,
73.8651

■ 39.7394, 30.9055,
43.2214

■ 71.5755, 85.6295,
81.4190

■ 36.6136, 25.8703,
38.4294

■ 74.6002, 89.9012,
87.9080

■ 34.0311, 21.8467,
34.0499

■ 75.7644, 90.3669,
94.0388

■ 31.9558, 18.7637,
30.0666

■ 76.9825, 90.8541,
100.4530

■ 30.3468, 16.5410,
26.4615

■ 78.2551, 91.3631,
107.1543

■ 29.1563, 15.0847,
23.2141

■ 78.4389, 91.4367,
108.1226

■ 28.3186, 14.2646,
20.2979

Harmonies

Analogous

The Analogous color harmony consists of three colors that are next to each other on the color wheel.



51.8345, 52.6942, 63.6833



52.6899, 52.6942, 60.2173



52.8401, 52.6942, 56.1377

Triad

The Triadic color harmony groups three colors that are evenly spaced from another and form a triangle on the color wheel.



52.6899, 52.6942, 60.2173



49.6503, 52.6942, 49.9670



47.9877, 52.6942, 62.4744

Complementary

The Complementary color scheme is a pair of colors which are on the opposite of each other on the color wheel.



52.6899, 52.6942, 60.2173



51.8346, 57.2997, 59.3697

Split Complementary

Split-complementary colors differ from the complementary color scheme. The scheme consists of three colors, the original color and two neighbors of the complement color.



47.4260, 52.6942, 58.6304



52.6899, 52.6942, 60.2173



48.3738, 52.6942, 51.4978

Square

The Square scheme is like the rectangle color scheme, but the four colors are evenly spaced on the color wheel.



52.6899, 52.6942, 60.2173



51.0671, 52.6942, 50.3467



47.5660, 52.6942, 54.6236



49.1141, 52.6942, 65.0288

Rectangle

The Rectangle color scheme consists of four colors that form a rectangle on the color wheel.



52.6899, 52.6942, 60.2173



52.5173, 52.6942, 53.6368



47.5660, 52.6942, 54.6236



47.7275, 52.6942, 61.2831

Sweetspot

The Sweet Spot groups the original color and five complimentary colors.



52.6914, 52.6965, 60.2184



93.1177, 96.6584, 106.6438



51.0129, 51.7502, 63.8008



19.9513, 20.7239, 22.8499



0.0000, 0.0000, 0.0000



20.3446, 21.4041, 23.3091

Same Dimension

The Same Dimension uses a secret algorithm to generate beautiful new colors.



52.6914, 52.6965, 60.2184



86.7173, 85.6440, 99.0028



51.8534, 52.3613, 55.8055



11.4901, 11.3248, 13.1156



17.9465, 8.9892, 12.7029



0.9627, 0.4785, 0.8494

Inverse Universe

The Inverse Universe completely reimagines the original color for something new.



52.6914, 52.6965, 60.2184



86.7173, 85.6440, 99.0028



52.6982, 57.6452, 63.9174



11.4901, 11.3248, 13.1156



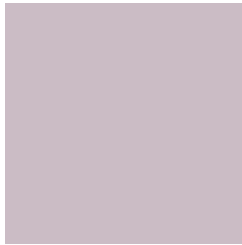
17.9465, 8.9892, 12.7029



0.9627, 0.4785, 0.8494

Previews

White Background



This preview shows how the XYZ color 52.6899, 52.6942, 60.2173 looks on a white background.

Color Contrast Check

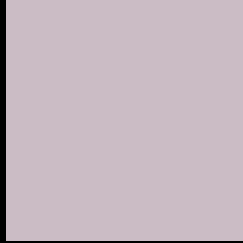
Large Text (above 18pt) WCAG AA × Fail

Any Text WCAG AA × Fail

Large Text (above 18pt) WCAG AAA × Fail

Any Text WCAG AAA × Fail

Black Background



This preview shows how the XYZ color 52.6899, 52.6942, 60.2173 looks on a black background.

Color Contrast Check

Large Text (above 18pt) WCAG AA ✓ Pass

Any Text WCAG AA ✓ Pass

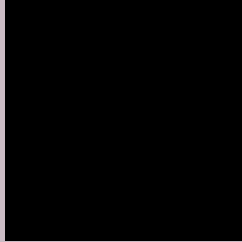
Large Text (above 18pt) WCAG AAA ✓ Pass

Any Text WCAG AAA ✓ Pass

If you want to check with other color combinations, try the [Color Contrast Checker](#).

XYZ 52.6899, 52.6942, 60.2173

Background



This preview shows how black text looks on a background with the XYZ color 52.6899, 52.6942, 60.2173.



This preview shows how white text looks on a background with the XYZ color 52.6899, 52.6942,

Color Blindness Simulation

Color vision deficiency is a very complex topic, and I could not describe the different causes any better than Wikipedia does, so if you want to learn more, you should check out their [article about color blindness](#).

Dichromacy



Original Color

52.6899, 52.6942, 60.2173

Protanopia

50.9319, 52.7226, 61.5249

Deuteranopia

53.6494, 52.5589, 60.1406



Tritanopia

53.3328, 52.6423, 63.2271

Trichromacy



Original Color

52.6899, 52.6942, 60.2173

Protanomaly

51.6325, 52.7744, 60.8912

Deuteranomaly

53.3020, 52.6937, 60.1849

Tritanomaly

53.0975, 52.5481, 61.9878

Monochromacy



Original Color

52.6899, 52.6942, 60.2173

Achromatopsia

51.2775, 53.9479, 58.7493

Achromatomaly

51.7259, 53.5097, 59.2319

CSS Examples

Text

The CSS property to change the color of the text to XYZ 52.6899, 52.6942, 60.2173 is called "color". The color property can be set on classes, ids or directly on the HTML element.

This example shows how text in the color rgb(203, 188, 197) looks like.

```
.text, #text, p{  
    color:rgb(203, 188, 197)  
}
```

If you want to add a text shadow in that color use the text-shadow property, you can generate a text shadow directly with our [CSS Text Shadow Generator](#).

Here you see how black text with a 4 pixel rgb(203, 188, 197) colored shadow looks like.

```
.shadow{ text-shadow: 4px 4px 2px rgb(203, 188, 197) }
```

Border

The CSS property to change the border of an element to XYZ 52.6899, 52.6942, 60.2173 is called "border". The border property can be set on classes, ids or directly on the HTML element.

This example shows the color as border, it can be applied via the CSS property "border" or "border-color".

```
.border, #border, table{ border:4px solid rgb(203, 188, 197) }
```


If only the border color should be changed use the property `border-color`.

```
.border{ border-color:rgb(203, 188, 197) }
```

If you want to add a box shadow in that color use:

Here you see how a box with a 4 pixel `rgb(203, 188, 197)` colored shadow looks like.

```
.boxshadow{ -moz-box-shadow:4px 4px 4px  
4px rgb(203, 188, 197); -webkit-box-  
shadow:4px 4px 4px 4px rgb(203, 188, 197);  
box-shadow:4px 4px 4px 4px rgb(203, 188,  
197) }
```

Background

The CSS property to change the background color of an element to XYZ 52.6899, 52.6942, 60.2173 is called "background". The background property can be set on classes, ids or directly on the HTML element.

```
.background, #background, body{  
background: rgb(203, 188, 197) }
```

If only the background color should be changed can be used:

```
.background{ background-color: rgb(203,  
188, 197) }
```

This example shows the color as background, it is applied via the CSS property "background".

To optimize and compress your CSS code, you can use our [online CSS compressor and optimizer](#) based on csstidy. If you want to create a linear or radial gradient as background or border, check our [CSS Gradient Generator](#).

Hey! You found this booklet interesting? Support Converting Colors with the new Membership Option!

The pro membership hides all ads, plus gives you double the colors in the color bucket, and more awesome pro features!

[Learn more, Memberships starting at \\$2.50/m!](#)

**Follow me
on Twitter!**

@ConvertingColor