

Converting Colors

XYZ(52.8291, 52.2805, 53.5295)

Have a look what the booklet for
XYZ(52.8291, 52.2805, 53.5295)
contains.

XYZ(53.0002, 52.3646, 53.7683)	3
<i>Conversions</i>	4
<i>Details</i>	6
<i>Harmonies</i>	12
<i>Previews</i>	24
<i>Color Blindness Simulation</i>	28
<i>CSS Examples</i>	31

Color

**XYZ(53.0002, 52.3646,
53.7683)**

Conversions

Conversions Part 1

Format	Color
Hex	D2BABA
RGB	210, 186, 186
RGB Percent	82%, 73%, 73%
CMY	0.1765, 0.2706, 0.2706
CMYK	0.00, 0.11, 0.11, 0.18
HSL	0°, 21%, 78%
HSV	0°, 11%, 82%
XYZ	53.0002, 52.3646, 53.7683
YIQ	193.1760, 14.3040, 5.0880

Conversions

Conversions Part 2

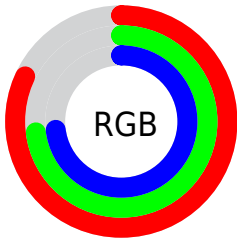
Format	Color
R _Y B	210, 186, 186
Decimal	13810362
CIE Lab	77.50, 8.53, 3.12
CIE LCh	77, 9.087, 20.088
Yxy	52.3646, 0.3331, 0.3291
Android (android.graphics.Color)	4292000442 (0xFFD2BABA)
YUV	193.1760, -3.5378, 14.7546
Hunter-Lab	72.3634, 4.1006, 6.6000

Details

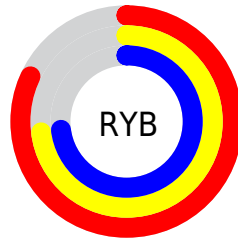
The XYZ color **53.0002, 52.3646, 53.7683** is a light color, and the websafe version is hex **CCCCCC**. A complement of this color would be **54.9289, 61.1843, 69.8882**, and the grayscale version is **50.8075, 53.4535, 58.2108**.

A 20% lighter version of the original color is **89.0191, 91.1751, 96.9111**, and **26.1387, 25.4371, 25.7225** is the 20% darker color. If you saturate the color by 10%, you get **46.8269, 43.3316, 41.4937**, and if you desaturate by 10%, it is **60.1546, 62.8334, 67.9899**.

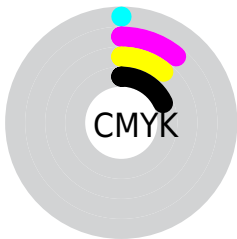
Distribution



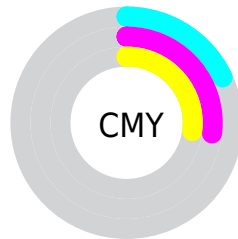
- Red (82%)
- Green (73%)
- Blue (73%)



- Red (82%)
- Yellow (73%)
- Blue (73%)



- Cyan (0%)
- Magenta (11%)
- Yellow (11%)
- Black (18%)



- Cyan (18%)
- Magenta (27%)
- Yellow (27%)

Brightness & Saturation Gradients

These gradients show how the XYZ color 53.0002, 52.3646, 53.7683 changes by changing the brightness by 10 percent. The first figure shows a shift by +10% for each color and the second figure -10%.

Similar to the brightness gradients but the following saturation gradients show a change of the XYZ color 53.0002, 52.3646, 53.7683 by changing the saturation by 10% instead.

■ 53.0002, 52.3646,
53.7683

■ 53.0002, 52.3646,
53.7683

388.5467,
395.8426, 418.3755

■ 38.0304, 37.2958,
38.0245

■ 93.7702, 93.6687,
97.1869

■ 26.1836, 25.4366,
25.6998

120.3011,
120.6728, 125.6989

■ 17.0945, 16.4026,
16.3754

151.4164,
152.4241, 159.3040

■ 10.3976, 9.8095,
9.6330

187.4815,
189.3070, 198.4207

■ 5.7276, 5.2728,
5.0539

228.8617,
231.7059, 243.4677

■ 2.7193, 2.4082,
2.2196

275.9225,

■ 1.0071, 0.8301,

280.0052, 294.8635

0.6857

329.0290,
334.5893, 353.0266

■ 0.0000, 0.0000,
0.0000

■ 53.0002, 52.3646,
53.7683

■ 53.0002, 52.3646,
53.7683

■ 46.8269, 43.3316,
41.4937

■ 60.1546, 62.8334,
67.9899

■ 41.5877, 35.6654,
31.0782

■ 68.3255, 74.7894,
84.2345

■ 37.2386, 29.3014,
22.4322

■ 77.5521, 88.2901,
102.5781

■ 33.7301, 24.1673,
15.4576

■ 80.3886, 92.4418,
108.2139

■ 31.0078, 20.1838,
10.0463

■ 29.0114, 17.2623,
6.0779

■ 27.6713, 15.3011,
3.4145

■ 26.9046, 14.1791,
1.8911

■ 26.5790, 13.7025,
1.2440

Harmonies

Analogous

The Analogous color harmony consists of three colors that are next to each other on the color wheel.



53.1615, 52.3646, 58.6920



53.0002, 52.3646, 53.7683



51.9624, 52.3646, 49.9358

Triad

The Triadic color harmony groups three colors that are evenly spaced from another and form a triangle on the color wheel.



53.0002, 52.3646, 53.7683



47.2331, 52.3646, 51.0510



49.1937, 52.3646, 67.0510

Complementary

The Complementary color scheme is a pair of colors which are on the opposite of each other on the color wheel.



53.0002, 52.3646, 53.7683



54.9289, 61.1843, 69.8882

Split Complementary

Split-complementary colors differ from the complementary color scheme. The scheme consists of three colors, the original color and two neighbors of the complement color.



47.6420, 52.3646, 64.7360



53.0002, 52.3646, 53.7683



46.5278, 52.3646, 55.3725

Square

The Square scheme is like the rectangle color scheme, but the four colors are evenly spaced on the color wheel.



53.0002, 52.3646, 53.7683



48.6236, 52.3646, 48.4319



46.6757, 52.3646, 60.3922



50.9363, 52.3646, 66.5591

Rectangle

The Rectangle color scheme consists of four colors that form a rectangle on the color wheel.



53.0002, 52.3646, 53.7683



50.9264, 52.3646, 48.4228



46.6757, 52.3646, 60.3922



48.6332, 52.3646, 66.5703

Sweetspot

The Sweet Spot groups the original color and five complimentary colors.



53.0017, 52.3669, 53.7694



91.4508, 94.7336, 101.7446



55.7708, 53.4733, 68.3554



19.3736, 19.9833, 21.3786



0.0000, 0.0000, 0.0000



20.3446, 21.4041, 23.3091

Same Dimension

The Same Dimension uses a secret algorithm to generate beautiful new colors.



53.0017, 52.3669, 53.7694



79.4770, 77.2129, 77.9398



55.6361, 57.6357, 54.6475



11.8089, 11.8085, 12.2689



16.2127, 8.3584, 0.7588



0.9066, 0.4675, 0.0424

Inverse Universe

The Inverse Universe completely reimagines the original color for something new.



54.9289, 61.1843, 69.8882



83.1120, 93.8431, 108.3408



52.0773, 55.4812, 68.9376



12.1583, 13.4068, 15.1906



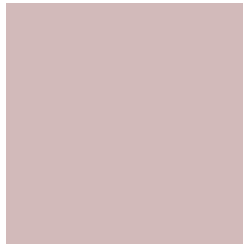
21.1492, 30.9449, 42.0508



1.1826, 1.7303, 2.3512

Previews

White Background



This preview shows how the XYZ color 53.0002, 52.3646, 53.7683 looks on a white background.

Color Contrast Check

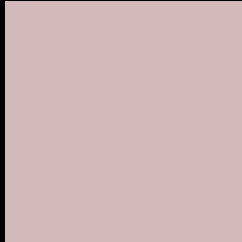
Large Text (above 18pt) WCAG AA × Fail

Any Text WCAG AA × Fail

Large Text (above 18pt) WCAG AAA × Fail

Any Text WCAG AAA × Fail

Black Background



This preview shows how the XYZ color 53.0002, 52.3646, 53.7683 looks on a black background.

Color Contrast Check

Large Text (above 18pt) WCAG AA ✓ Pass

Any Text WCAG AA ✓ Pass

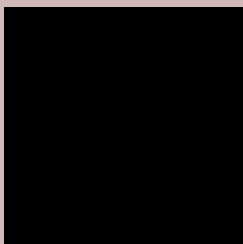
Large Text (above 18pt) WCAG AAA ✓ Pass

Any Text WCAG AAA ✓ Pass

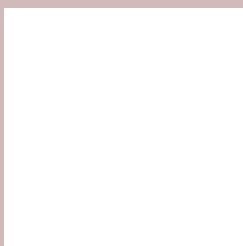
If you want to check with other color combinations, try the [Color Contrast Checker](#).

XYZ 53.0002, 52.3646, 53.7683

Background



This preview shows how black text looks on a background with the XYZ color 53.0002, 52.3646, 53.7683.



This preview shows how white text looks on a background with the XYZ color 53.0002, 52.3646,

53.7683.

Color Blindness Simulation

Color vision deficiency is a very complex topic, and I could not describe the different causes any better than Wikipedia does, so if you want to learn more, you should check out their [article about color blindness](#).

Dichromacy



Original Color

53.0002, 52.3646, 53.7683

Protanopia

50.5811, 52.6715, 55.6448

Deuteranopia

53.3633, 52.2401, 53.7252



Tritanopia

54.4849, 52.3552, 60.6600

Trichromacy



Original Color

53.0002, 52.3646, 53.7683

Protanomaly

51.3621, 52.4435, 54.9925

Deuteranomaly

53.0759, 52.0920, 53.7117

Tritanomaly

53.9505, 52.4418, 58.3177

Monochromacy



Original Color

53.0002, 52.3646, 53.7683

Achromatopsia

50.6879, 53.3276, 58.0738

Achromatomaly

51.2609, 52.6867, 56.1830

CSS Examples

Text

The CSS property to change the color of the text to XYZ 53.0002, 52.3646, 53.7683 is called "color". The color property can be set on classes, ids or directly on the HTML element.

This example shows how text in the color `rgb(210, 186, 186)` looks like.

```
.text, #text, p{  
    color:rgb(210, 186, 186)  
}
```

If you want to add a text shadow in that color use the text-shadow property, you can generate a text shadow directly with our [CSS Text Shadow Generator](#).

Here you see how black text with a 4 pixel rgb(210, 186, 186) colored shadow looks like.

```
.shadow{ text-shadow: 4px 4px 2px rgb(210, 186, 186) }
```

Border

The CSS property to change the border of an element to XYZ 53.0002, 52.3646, 53.7683 is called "border". The border property can be set on classes, ids or directly on the HTML element.

This example shows the color as border, it can be applied via the CSS property "border" or "border-color".

```
.border, #border, table{ border:4px solid rgb(210, 186, 186) }
```


If only the border color should be changed use the property `border-color`.

```
.border{ border-color:rgb(210, 186, 186) }
```

If you want to add a box shadow in that color use:

Here you see how a box with a 4 pixel `rgb(210, 186, 186)` colored shadow looks like.

```
.boxshadow{ -moz-box-shadow:4px 4px 4px  
4px rgb(210, 186, 186); -webkit-box-  
shadow:4px 4px 4px 4px rgb(210, 186, 186);  
box-shadow:4px 4px 4px 4px rgb(210, 186,  
186) }
```

Background

The CSS property to change the background color of an element to XYZ 53.0002, 52.3646, 53.7683 is called "background". The background property can be set on classes, ids or directly on the HTML element.

```
.background, #background, body{  
background: rgb(210, 186, 186) }
```

If only the background color should be changed can be used:

```
.background{ background-color: rgb(210,  
186, 186) }
```

This example shows the color as background, it is applied via the CSS property "background".

To optimize and compress your CSS code, you can use our [online CSS compressor and optimizer](#) based on csstidy. If you want to create a linear or radial gradient as background or border, check our [CSS Gradient Generator](#).

Hey! You found this booklet interesting? Support Converting Colors with the new Membership Option!

The pro membership hides all ads, plus gives you double the colors in the color bucket, and more awesome pro features!

[Learn more, Memberships starting at \\$2.50/m!](#)

**Follow me
on Twitter!**

@ConvertingColor