

Converting Colors

XYZ(52.8651, 52.2401, 56.2954)

Have a look what the booklet for
XYZ(52.8651, 52.2401, 56.2954)
contains.

XYZ(52.8656, 52.2454, 56.0133)	3
<i>Conversions</i>	4
<i>Details</i>	6
<i>Harmonies</i>	12
<i>Previews</i>	24
<i>Color Blindness Simulation</i>	28
<i>CSS Examples</i>	31

Color

**XYZ(52.8656, 52.2454,
56.0133)**

Conversions

Conversions Part 1

Format	Color
Hex	D0BABE
RGB	208, 186, 190
RGB Percent	82%, 73%, 75%
CMY	0.1843, 0.2706, 0.2549
CMYK	0.00, 0.11, 0.09, 0.18
HSL	349°, 19%, 77%
HSV	349°, 11%, 82%
XYZ	52.8656, 52.2454, 56.0133
YIQ	193.0340, 11.8280, 5.9080

Conversions

Conversions Part 2

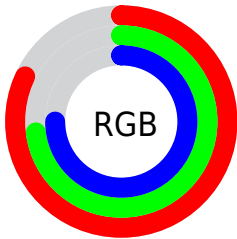
Format	Color
R _Y B	208, 186, 190
Decimal	13679294
CIE Lab	77.43, 8.49, 0.83
CIE LCh	77, 8.532, 5.571
Yxy	52.2454, 0.3281, 0.3243
Android (android.graphics.Color)	4291869374 (0xFFD0BABE)
YUV	193.0340, -1.4958, 13.1252
Hunter-Lab	72.2810, 4.0614, 4.6506

Details

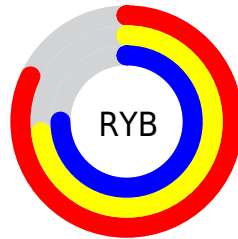
The XYZ color **52.8656, 52.2454, 56.0133** is a light color, and the websafe version is hex **CCCCCC**. A complement of this color would be **53.7067, 59.9118, 65.8631**, and the grayscale version is **50.7134, 53.3545, 58.1030**.

A 20% lighter version of the original color is **89.6267, 91.4181, 100.1104**, and **26.2293, 25.4512, 27.1971** is the 20% darker color. If you saturate the color by 10%, you get **47.0458, 43.4106, 45.4248**, and if you desaturate by 10%, it is **59.5435, 62.4474, 67.9611**.

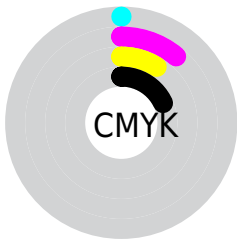
Distribution



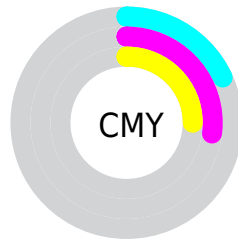
- Red (82%)
- Green (73%)
- Blue (75%)



- Red (82%)
- Yellow (73%)
- Blue (75%)



- Cyan (0%)
- Magenta (11%)
- Yellow (9%)
- Black (18%)



- Cyan (18%)
- Magenta (27%)
- Yellow (25%)

Brightness & Saturation Gradients

These gradients show how the XYZ color 52.8656, 52.2454, 56.0133 changes by changing the brightness by 10 percent. The first figure shows a shift by +10% for each color and the second figure -10%.

Similar to the brightness gradients but the following saturation gradients show a change of the XYZ color 52.8656, 52.2454, 56.0133 by changing the saturation by 10% instead.

■ 52.8656, 52.2454,
56.0133

■ 52.8656, 52.2454,
56.0133

388.0386,
395.3833, 427.1313

■ 37.9225, 37.2007,
39.8095

■ 93.5733, 93.4931,
100.5100

■ 26.0995, 25.3629,
27.0774

120.0686,
120.4648, 129.6400

■ 17.0312, 16.3477,
17.3984

151.1453,
152.1810, 163.9159

■ 10.3522, 9.7705,
10.3540

187.1689,
189.0262, 203.7561

■ 5.6971, 5.2471,
5.5256

228.5047,
231.3845, 249.5792

■ 2.7007, 2.3929,
2.4948

275.5180,

■ 0.9975, 0.8223,

279.6406, 301.8037

0.8374

328.5742,
334.1787, 360.8483

0.0000, 0.0000,
0.0000

52.8656, 52.2454,
56.0133

52.8656, 52.2454,
56.0133

47.0458, 43.4106,
45.4248

59.5435, 62.4474,
67.9611

42.0447, 35.8783,
36.1437

67.1080, 74.0640,
81.3106

37.8266, 29.5887,
28.1201

75.5916, 87.1490,
96.1067

34.3513, 24.4748,
21.2992

79.8227, 92.1500,
108.1874

31.5748, 20.4631,
15.6224

■ 29.4487, 17.4719,
11.0259

■ 27.9179, 15.4081,
7.4395

■ 26.9179, 14.1613,
4.7843

■ 26.3592, 13.5486,
3.0420

Harmonies

Analogous

The Analogous color harmony consists of three colors that are next to each other on the color wheel.



52.5871, 52.2454, 60.7069



52.8656, 52.2454, 56.0133



52.2693, 52.2454, 51.7886

Triad

The Triadic color harmony groups three colors that are evenly spaced from another and form a triangle on the color wheel.



52.8656, 52.2454, 56.0133



47.8442, 52.2454, 49.8464



48.3638, 52.2454, 65.5193

Complementary

The Complementary color scheme is a pair of colors which are on the opposite of each other on the color wheel.



52.8656, 52.2454, 56.0133



53.7067, 59.9118, 65.8631

Split Complementary

Split-complementary colors differ from the complementary color scheme. The scheme consists of three colors, the original color and two neighbors of the complement color.



47.1345, 52.2454, 62.3081



52.8656, 52.2454, 56.0133



46.8392, 52.2454, 53.2295

Square

The Square scheme is like the rectangle color scheme, but the four colors are evenly spaced on the color wheel.



52.8656, 52.2454, 56.0133



49.3519, 52.2454, 48.3561



46.5822, 52.2454, 57.7684



49.9647, 52.2454, 66.3651

Rectangle

The Rectangle color scheme consists of four colors that form a rectangle on the color wheel.



52.8656, 52.2454, 56.0133



51.4635, 52.2454, 49.7517



46.5822, 52.2454, 57.7684



47.8946, 52.2454, 64.6724

Sweetspot

The Sweet Spot groups the original color and five complimentary colors.



52.8671, 52.2477, 56.0144



91.6662, 94.8191, 102.8806



53.8384, 52.5069, 66.9724



19.4314, 20.0063, 21.6837



0.0000, 0.0000, 0.0000



20.3446, 21.4041, 23.3091

Same Dimension

The Same Dimension uses a secret algorithm to generate beautiful new colors.



52.8671, 52.2477, 56.0144



81.3074, 79.0173, 84.2729



53.9396, 55.0822, 54.2461



11.8952, 11.8428, 12.7240



16.4542, 8.4545, 2.0320



0.9471, 0.4836, 0.2563

Inverse Universe

The Inverse Universe completely reimagines the original color for something new.



52.8671, 52.2477, 56.0144



81.3074, 79.0173, 84.2729



52.5311, 56.7837, 67.8668



11.8952, 11.8428, 12.7240



16.4542, 8.4545, 2.0320



0.9471, 0.4836, 0.2563

Previews

White Background



This preview shows how the XYZ color 52.8656, 52.2454, 56.0133 looks on a white background.

Color Contrast Check

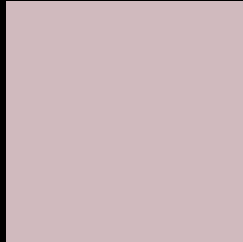
Large Text (above 18pt) WCAG AA × Fail

Any Text WCAG AA × Fail

Large Text (above 18pt) WCAG AAA × Fail

Any Text WCAG AAA × Fail

Black Background



This preview shows how the XYZ color 52.8656, 52.2454, 56.0133 looks on a black background.

Color Contrast Check

Large Text (above 18pt) WCAG AA ✓ Pass

Any Text WCAG AA ✓ Pass

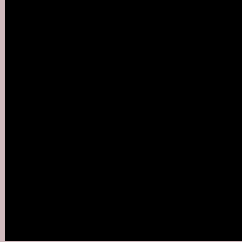
Large Text (above 18pt) WCAG AAA ✓ Pass

Any Text WCAG AAA ✓ Pass

If you want to check with other color combinations, try the [Color Contrast Checker](#).

XYZ 52.8656, 52.2454, 56.0133

Background



This preview shows how black text looks on a background with the XYZ color 52.8656, 52.2454, 56.0133.



This preview shows how white text looks on a background with the XYZ color 52.8656, 52.2454,

Color Blindness Simulation

Color vision deficiency is a very complex topic, and I could not describe the different causes any better than Wikipedia does, so if you want to learn more, you should check out their [article about color blindness](#).

Dichromacy



Original Color

52.8656, 52.2454, 56.0133

Protanopia

50.2872, 52.1465, 57.8669

Deuteranopia

53.2216, 52.1173, 55.9698



Tritanopia

53.9523, 52.3768, 61.2990

Trichromacy



Original Color

52.8656, 52.2454, 56.0133

Protanomaly

51.2652, 52.3431, 57.2704

Deuteranomaly

52.9377, 51.9709, 55.9565

Tritanomaly

53.6073, 52.2388, 59.4822

Monochromacy



Original Color

52.8656, 52.2454, 56.0133

Achromatopsia

50.6879, 53.3276, 58.0738

Achromatomaly

51.2166, 52.6384, 57.3300

CSS Examples

Text

The CSS property to change the color of the text to XYZ 52.8656, 52.2454, 56.0133 is called "color". The color property can be set on classes, ids or directly on the HTML element.

This example shows how text in the color `rgb(208, 186, 190)` looks like.

```
.text, #text, p{  
    color:rgb(208, 186, 190)  
}
```

If you want to add a text shadow in that color use the text-shadow property, you can generate a text shadow directly with our [CSS Text Shadow Generator](#).

Here you see how black text with a 4 pixel rgb(208, 186, 190) colored shadow looks like.

```
.shadow{ text-shadow: 4px 4px 2px rgb(208, 186, 190) }
```

Border

The CSS property to change the border of an element to XYZ 52.8656, 52.2454, 56.0133 is called "border". The border property can be set on classes, ids or directly on the HTML element.

This example shows the color as border, it can be applied via the CSS property "border" or "border-color".

```
.border, #border, table{ border:4px solid rgb(208, 186, 190) }
```


If only the border color should be changed use the property `border-color`.

```
.border{ border-color:rgb(208, 186, 190) }
```

If you want to add a box shadow in that color use:

Here you see how a box with a 4 pixel `rgb(208, 186, 190)` colored shadow looks like.

```
.boxshadow{ -moz-box-shadow:4px 4px 4px  
4px rgb(208, 186, 190); -webkit-box-  
shadow:4px 4px 4px 4px rgb(208, 186, 190);  
box-shadow:4px 4px 4px 4px rgb(208, 186,  
190) }
```

Background

The CSS property to change the background color of an element to XYZ 52.8656, 52.2454, 56.0133 is called "background". The background property can be set on classes, ids or directly on the HTML element.

```
.background, #background, body{  
background: rgb(208, 186, 190) }
```

If only the background color should be changed can be used:

```
.background{ background-color: rgb(208,  
186, 190) }
```

This example shows the color as background, it is applied via the CSS property "background".

To optimize and compress your CSS code, you can use our [online CSS compressor and optimizer](#) based on csstidy. If you want to create a linear or radial gradient as background or border, check our [CSS Gradient Generator](#).

Hey! You found this booklet interesting? Support Converting Colors with the new Membership Option!

The pro membership hides all ads, plus gives you double the colors in the color bucket, and more awesome pro features!

[Learn more, Memberships starting at \\$2.50/m!](#)

**Follow me
on Twitter!**

@ConvertingColor