

Converting Colors

XYZ(52.8883, 53.5284, 56.2645)

Have a look what the booklet for
XYZ(52.8883, 53.5284, 56.2645)
contains.

XYZ(52.8846, 53.5238, 56.2590)	3
<i>Conversions</i>	4
<i>Details</i>	6
<i>Harmonies</i>	12
<i>Previews</i>	24
<i>Color Blindness Simulation</i>	28
<i>CSS Examples</i>	31

Color

**XYZ(52.8846, 53.5238,
56.2590)**

Conversions

Conversions Part 1

Format	Color
Hex	CDBEBE
RGB	205, 190, 190
RGB Percent	80%, 75%, 75%
CMY	0.1961, 0.2549, 0.2549
CMYK	0.00, 0.07, 0.07, 0.20
HSL	0°, 13%, 77%
HSV	0°, 7%, 80%
XYZ	52.8846, 53.5238, 56.2590
YIQ	194.4850, 8.9400, 3.1800

Conversions

Conversions Part 2

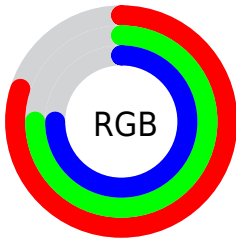
Format	Color
R_{YB}	205, 190, 190
Decimal	13483710
CIE Lab	78.18, 5.28, 1.90
CIE LCh	78, 5.613, 19.760
Yxy	53.5238, 0.3251, 0.3290
Android (android.graphics.Color)	4291673790 (0xFFCDBEBE)
YUV	194.4850, -2.2111, 9.2217
Hunter-Lab	73.1600, 1.0010, 5.6188

Details

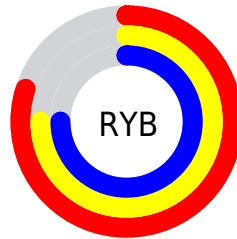
The XYZ color **52.8846, 53.5238, 56.2590** is a light color, and the websafe version is hex **CCCCCC**. A complement of this color would be **54.0858, 59.0166, 66.2990**, and the grayscale version is **51.5759, 54.2618, 59.0911**.

A 20% lighter version of the original color is **90.8303, 93.8254, 100.5116**, and **26.2235, 26.2768, 27.3567** is the 20% darker color. If you saturate the color by 10%, you get **46.6688, 44.4288, 43.8992**, and if you desaturate by 10%, it is **60.0429, 63.9980, 70.4891**.

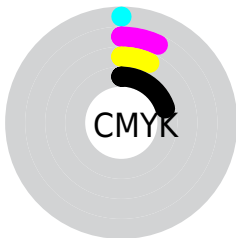
Distribution



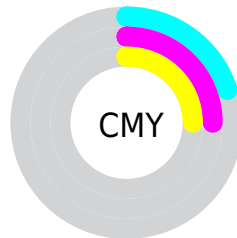
- Red (80%)
- Green (75%)
- Blue (75%)



- Red (80%)
- Yellow (75%)
- Blue (75%)



- Cyan (0%)
- Magenta (7%)
- Yellow (7%)
- Black (20%)



- Cyan (20%)
- Magenta (25%)
- Yellow (25%)

Brightness & Saturation Gradients

These gradients show how the XYZ color 52.8846, 53.5238, 56.2590 changes by changing the brightness by 10 percent. The first figure shows a shift by +10% for each color and the second figure -10%.

Similar to the brightness gradients but the following saturation gradients show a change of the XYZ color 52.8846, 53.5238, 56.2590 by changing the saturation by 10% instead.

■ 52.8846, 53.5238,
56.2590

■ 52.8846, 53.5238,
56.2590

388.1103,
400.2915, 428.0825

■ 37.9378, 38.2211,
40.0052

■ 93.6011, 95.3747,
100.8727

■ 26.1114, 26.1543,
27.2288

120.1014,
122.6917, 130.0698

■ 17.0401, 16.9391,
17.5112

151.1836,
154.7821, 164.4183

■ 10.3586, 10.1911,
10.4338

187.2131,
192.0306, 204.3369

■ 5.7014, 5.5258,
5.5782

228.5551,
234.8213, 250.2441

■ 2.7033, 2.5590,
2.5257

275.5751,

■ 0.9989, 0.9061,

283.5388, 302.5584

0.8537

328.6384,
338.5674, 361.6984

■ 0.0000, 0.0000,
0.0000

■ 52.8846, 53.5238,
56.2590

■ 52.8846, 53.5238,
56.2590

■ 46.6688, 44.4288,
43.8992

■ 60.0429, 63.9980,
70.4891

■ 41.3518, 36.6488,
33.3287

■ 68.1757, 75.8981,
86.6590

■ 36.8936, 30.1253,
24.4657

■ 77.3195, 89.2771,
104.8390

■ 33.2491, 24.7923,
17.2206

■ 78.9871, 91.7193,
108.1483

■ 30.3692, 20.5781,
11.4958

■ 28.1995, 17.4030,
7.1831

■ 26.6784, 15.1769,
4.1601

■ 25.7340, 13.7946,
2.2836

■ 25.2675, 13.1118,
1.3570

Harmonies

Analogous

The Analogous color harmony consists of three colors that are next to each other on the color wheel.



52.9777, 53.5238, 59.3593



52.8846, 53.5238, 56.2590



52.2481, 53.5238, 53.7859

Triad

The Triadic color harmony groups three colors that are evenly spaced from another and form a triangle on the color wheel.



52.8846, 53.5238, 56.2590



49.2790, 53.5238, 54.4609



50.4986, 53.5238, 64.4299

Complementary

The Complementary color scheme is a pair of colors which are on the opposite of each other on the color wheel.



52.8846, 53.5238, 56.2590



54.0858, 59.0166, 66.2990

Split Complementary

Split-complementary colors differ from the complementary color scheme. The scheme consists of three colors, the original color and two neighbors of the complement color.



49.5218, 53.5238, 63.0142



52.8846, 53.5238, 56.2590



48.8244, 53.5238, 57.2106

Square

The Square scheme is like the rectangle color scheme, but the four colors are evenly spaced on the color wheel.



52.8846, 53.5238, 56.2590



50.1627, 53.5238, 52.7739



48.9126, 53.5238, 60.3454



51.5895, 53.5238, 64.1528

Rectangle

The Rectangle color scheme consists of four colors that form a rectangle on the color wheel.



52.8846, 53.5238, 56.2590



51.6063, 53.5238, 52.7901



48.9126, 53.5238, 60.3454



50.1462, 53.5238, 64.1343

Sweetspot

The Sweet Spot groups the original color and five complimentary colors.



52.8861, 53.5261, 56.2601



92.6346, 96.4657, 104.0977



54.6105, 54.2146, 65.3445



19.8529, 20.6846, 22.3315



0.0000, 0.0000, 0.0000



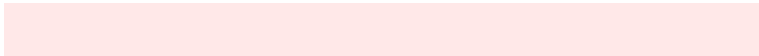
20.3446, 21.4041, 23.3091

Same Dimension

The Same Dimension uses a secret algorithm to generate beautiful new colors.



52.8861, 53.5261, 56.2601



84.6849, 84.8336, 88.2923



54.5518, 56.8576, 56.8154



11.2126, 11.2141, 11.6530



15.6740, 8.0809, 0.7337



0.8087, 0.4170, 0.0379

Inverse Universe

The Inverse Universe completely reimagines the original color for something new.



54.0858, 59.0166, 66.2990



87.1032, 95.9006, 108.5276



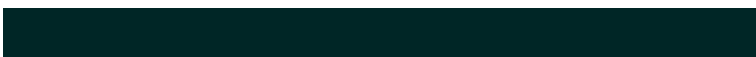
52.3354, 55.5157, 65.7155



11.5431, 12.7266, 14.4185



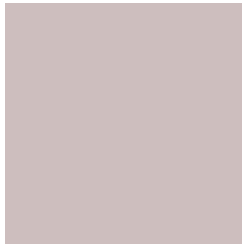
20.4435, 29.9109, 40.6522



1.0547, 1.5432, 2.0972

Previews

White Background



This preview shows how the XYZ color 52.8846, 53.5238, 56.2590 looks on a white background.

Color Contrast Check

Large Text (above 18pt) WCAG AA × Fail

Any Text WCAG AA × Fail

Large Text (above 18pt) WCAG AAA × Fail

Any Text WCAG AAA × Fail

Black Background



This preview shows how the XYZ color 52.8846, 53.5238, 56.2590 looks on a black background.

Color Contrast Check

Large Text (above 18pt) WCAG AA ✓ Pass

Any Text WCAG AA ✓ Pass

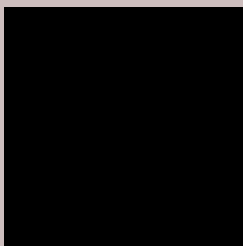
Large Text (above 18pt) WCAG AAA ✓ Pass

Any Text WCAG AAA ✓ Pass

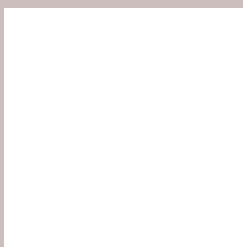
If you want to check with other color combinations, try the [Color Contrast Checker](#).

XYZ 52.8846, 53.5238, 56.2590

Background



This preview shows how black text looks on a background with the XYZ color 52.8846, 53.5238, 56.2590.



This preview shows how white text looks on a background with the XYZ color 52.8846, 53.5238,

Color Blindness Simulation

Color vision deficiency is a very complex topic, and I could not describe the different causes any better than Wikipedia does, so if you want to learn more, you should check out their [article about color blindness](#).

Dichromacy



Original Color

52.8846, 53.5238, 56.2590

Protanopia

51.2796, 53.3312, 56.8814

Deuteranopia

54.6149, 53.4484, 56.7283



Tritanopia

54.4948, 53.5436, 63.9627

Trichromacy



Original Color

52.8846, 53.5238, 56.2590

Protanomaly

51.8542, 53.3026, 56.8456

Deuteranomaly

53.9655, 53.4297, 56.7589

Tritanomaly

53.8442, 53.5942, 60.9329

Monochromacy



Original Color

52.8846, 53.5238, 56.2590

Achromatopsia

51.2775, 53.9479, 58.7493

Achromatomaly

51.9843, 53.9960, 58.1345

CSS Examples

Text

The CSS property to change the color of the text to XYZ 52.8846, 53.5238, 56.2590 is called "color". The color property can be set on classes, ids or directly on the HTML element.

This example shows how text in the color `rgb(205, 190, 190)` looks like.

```
.text, #text, p{  
    color:rgb(205, 190, 190)  
}
```

If you want to add a text shadow in that color use the text-shadow property, you can generate a text shadow directly with our [CSS Text Shadow Generator](#).

Here you see how black text with a 4 pixel rgb(205, 190, 190) colored shadow looks like.

```
.shadow{ text-shadow: 4px 4px 2px rgb(205, 190, 190) }
```

Border

The CSS property to change the border of an element to XYZ 52.8846, 53.5238, 56.2590 is called "border". The border property can be set on classes, ids or directly on the HTML element.

This example shows the color as border, it can be applied via the CSS property "border" or "border-color".

```
.border, #border, table{ border:4px solid rgb(205, 190, 190) }
```


If only the border color should be changed use the property `border-color`.

```
.border{ border-color:rgb(205, 190, 190) }
```

If you want to add a box shadow in that color use:

Here you see how a box with a 4 pixel `rgb(205, 190, 190)` colored shadow looks like.

```
.boxshadow{ -moz-box-shadow:4px 4px 4px  
4px rgb(205, 190, 190); -webkit-box-  
shadow:4px 4px 4px 4px rgb(205, 190, 190);  
box-shadow:4px 4px 4px 4px rgb(205, 190,  
190) }
```

Background

The CSS property to change the background color of an element to XYZ 52.8846, 53.5238, 56.2590 is called "background". The background property can be set on classes, ids or directly on the HTML element.

```
.background, #background, body{  
background: rgb(205, 190, 190) }
```

If only the background color should be changed can be used:

```
.background{ background-color: rgb(205,  
190, 190) }
```

This example shows the color as background, it is applied via the CSS property "background".

To optimize and compress your CSS code, you can use our [online CSS compressor and optimizer](#) based on csstidy. If you want to create a linear or radial gradient as background or border, check our [CSS Gradient Generator](#).

Hey! You found this booklet interesting? Support Converting Colors with the new Membership Option!

The pro membership hides all ads, plus gives you double the colors in the color bucket, and more awesome pro features!

[Learn more, Memberships starting at \\$2.50/m!](#)

**Follow me
on Twitter!**

@ConvertingColor