

# Converting Colors

XYZ(52.9157, 50.4838, 53.4098)

Have a look what the booklet for  
XYZ(52.9157, 50.4838, 53.4098)  
contains.

<b>XYZ(52.9157, 50.4838, 53.4098)</b> .....	3
<b><i>Conversions</i></b> .....	4
<b><i>Details</i></b> .....	6
<b><i>Harmonies</i></b> .....	12
<b><i>Previews</i></b> .....	24
<b><i>Color Blindness Simulation</i></b> .....	28
<b><i>CSS Examples</i></b> .....	31

# Color

**XYZ(52.9157, 50.4838,  
53.4098)**

# Conversions

## Conversions Part 1

Format	Color
Hex	D6B4BA
RGB	214, 180, 186
RGB Percent	84%, 71%, 73%
CMY	0.1608, 0.2941, 0.2706
CMYK	0.00, 0.16, 0.13, 0.16
HSL	349°, 29%, 77%
HSV	349°, 16%, 84%
XYZ	52.9157, 50.4838, 53.4098
YIQ	190.8500, 18.3380, 9.0740

# Conversions

## Conversions Part 2

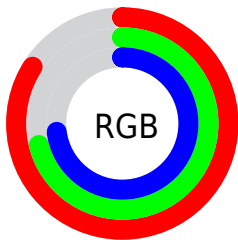
Format	Color
R <sub>Y</sub> B	214, 180, 186
Decimal	14070970
CIE Lab	76.37, 13.20, 1.52
CIE LCh	76, 13.286, 6.567
Yxy	50.4838, 0.3375, 0.3219
Android (android.graphics.Color)	4292261050 (0xFFD6B4BA)
YUV	190.8500, -2.3910, 20.3026
Hunter-Lab	71.0520, 8.5963, 5.1680

# Details

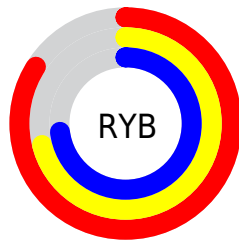
The XYZ color **52.9157, 50.4838, 53.4098** is a light color, and the websafe version is hex **CC9999**. A complement of this color would be **54.2560, 62.3517, 68.8529**, and the grayscale version is **49.4415, 52.0163, 56.6457**.

A 20% lighter version of the original color is **87.2625, 87.6617, 96.3256**, and **26.1211, 24.2431, 25.4930** is the 20% darker color. If you saturate the color by 10%, you get **47.1650, 41.7981, 42.8116**, and if you desaturate by 10%, it is **59.5673, 60.6004, 65.4499**.

# Distribution



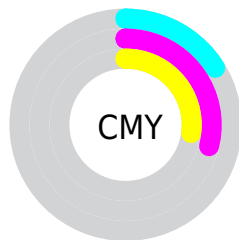
- Red (84%)
- Green (71%)
- Blue (73%)



- Red (84%)
- Yellow (71%)
- Blue (73%)



- Cyan (0%)
- Magenta (16%)
- Yellow (13%)
- Black (16%)




- Cyan (16%)
- Magenta (29%)
- Yellow (27%)


# Brightness & Saturation Gradients

These gradients show how the XYZ color 52.9157, 50.4838, 53.4098 changes by changing the brightness by 10 percent. The first figure shows a shift by +10% for each color and the second figure -10%.


Similar to the brightness gradients but the following saturation gradients show a change of the XYZ color 52.9157, 50.4838, 53.4098 by changing the saturation by 10% instead.





 52.9157, 50.4838,  
53.4098

 52.9157, 50.4838,  
53.4098


388.2278,  
388.5549, 416.9662

 37.9627, 35.7980,  
37.7400


 93.6466, 90.8913,  
96.6548

 26.1308, 24.2782,  
25.4807


120.1551,  
117.3817, 125.0671

 17.0547, 15.5401,  
16.2133


151.2463,  
148.5758, 158.5639

 10.3691, 9.1993,  
9.5192


187.2853,  
184.8579, 197.5640

 5.7085, 4.8714,  
4.9800

228.6376,  
226.6125, 242.4857

 2.7076, 2.1720,  
2.1770

275.6686,

 1.0011, 0.7047,

274.2240, 293.7476

0.6610

328.7435,  
328.0766, 351.7682

■ 0.0000, 0.0000,  
0.0000

■ 52.9157, 50.4838,  
53.4098

■ 52.9157, 50.4838,  
53.4098

■ 47.1650, 41.7981,  
42.8116

■ 59.5673, 60.6004,  
65.4499

■ 42.2722, 34.4722,  
33.5978

■ 67.1522, 72.2015,  
78.9800

■ 38.1970, 28.4390,  
25.7116

■ 75.7062, 85.3460,  
94.0500

■ 34.8939, 23.6232,  
19.0914

■ 81.5418, 93.0362,  
108.2678

■ 32.3133, 19.9414,  
13.6701

■ 30.3993, 17.3000,  
9.3746

■ 29.0879, 15.5899,  
6.1236

■ 28.3009, 14.6768,  
3.8237

■ 28.0775, 14.4345,  
3.1186

# Harmonies

## Analogous

The Analogous color harmony consists of three colors that are next to each other on the color wheel.



52.5274, 50.4838, 60.6231



52.9157, 50.4838, 53.4098



51.9460, 50.4838, 47.1724

# Triad

The Triadic color harmony groups three colors that are evenly spaced from another and form a triangle on the color wheel.



52.9157, 50.4838, 53.4098



45.1779, 50.4838, 44.6422



46.0982, 50.4838, 68.5826

# Complementary

The Complementary color scheme is a pair of colors which are on the opposite of each other on the color wheel.



52.9157, 50.4838, 53.4098



54.2560, 62.3517, 68.8529

# Split Complementary

Split-complementary colors differ from the complementary color scheme. The scheme consists of three colors, the original color and two neighbors of the complement color.



44.2275, 50.4838, 63.5790



52.9157, 50.4838, 53.4098



43.7092, 50.4838, 49.6765

# Square

The Square scheme is like the rectangle color scheme, but the four colors are evenly spaced on the color wheel.



52.9157, 50.4838, 53.4098



47.4360, 50.4838, 42.4020



43.3674, 50.4838, 56.5568



48.5348, 50.4838, 69.8002



# Rectangle

The Rectangle color scheme consists of four colors that form a rectangle on the color wheel.



52.9157, 50.4838, 53.4098



50.6791, 50.4838, 44.2676



43.3674, 50.4838, 56.5568



45.3849, 50.4838, 67.2677

# Sweetspot

The Sweet Spot groups the original color and five complimentary colors.



52.9171, 50.4861, 53.4109



89.4716, 91.4752, 98.9265



54.4073, 50.8760, 70.5713



18.9889, 19.3328, 20.8841



0.0000, 0.0000, 0.0000



20.3446, 21.4041, 23.3091



# Same Dimension

The Same Dimension uses a secret algorithm to generate beautiful new colors.



52.9171, 50.4861, 53.4109



75.7220, 70.5791, 73.9866



54.5513, 54.7533, 50.8760



12.5118, 12.4562, 13.3693



16.9980, 8.7355, 2.0276



1.0529, 0.5379, 0.2679



# Inverse Universe

The Inverse Universe completely reimagines the original color for something new.



52.9171, 50.4861, 53.4109



75.7220, 70.5791, 73.9866



52.3728, 57.3821, 71.9343



12.5118, 12.4562, 13.3693



16.9980, 8.7355, 2.0276

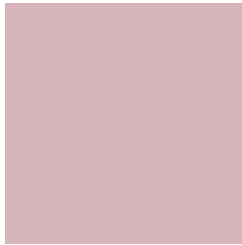


1.0529, 0.5379, 0.2679



# Previews

## White Background



This preview shows how the XYZ color 52.9157, 50.4838, 53.4098 looks on a white background.

## Color Contrast Check

Large Text (above 18pt) WCAG AA × Fail

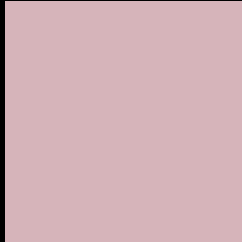
Any Text WCAG AA × Fail

Large Text (above 18pt) WCAG AAA × Fail

Any Text WCAG AAA × Fail



# Black Background



This preview shows how the XYZ color 52.9157, 50.4838, 53.4098 looks on a black background.

## Color Contrast Check

Large Text (above 18pt) WCAG AA ✓ Pass

Any Text WCAG AA ✓ Pass

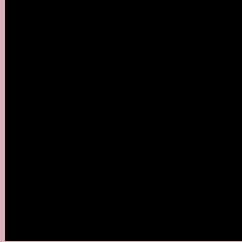
Large Text (above 18pt) WCAG AAA ✓ Pass

Any Text WCAG AAA ✓ Pass

If you want to check with other color combinations, try the [Color Contrast Checker](#).

**XYZ 52.9157, 50.4838, 53.4098**

## **Background**



This preview shows how black text looks on a background with the XYZ color 52.9157, 50.4838, 53.4098.



This preview shows how white text looks on a background with the XYZ color 52.9157, 50.4838,



# Color Blindness Simulation

Color vision deficiency is a very complex topic, and I could not describe the different causes any better than Wikipedia does, so if you want to learn more, you should check out their [article about color blindness](#).

## Dichromacy



### Original Color

52.9157, 50.4838, 53.4098

### Protanopia

48.7633, 50.7605, 55.9429

### Deuteranopia

51.6033, 50.4110, 53.4649



## Tritanopia

53.7701, 50.5375, 57.3728

# Trichromacy



## Original Color

52.9157, 50.4838, 53.4098

## Protanomaly

50.0875, 50.5142, 55.2544

## Deuteranomaly

51.9651, 50.2946, 53.4233

## Tritanomaly

53.4387, 50.4050, 55.6278

# Monochromacy



## Original Color

52.9157, 50.4838, 53.4098

## Achromatopsia

49.5206, 52.0996, 56.7364

## Achromatomaly

50.5088, 51.3569, 55.3949

# CSS Examples

## Text

The CSS property to change the color of the text to XYZ 52.9157, 50.4838, 53.4098 is called "color". The color property can be set on classes, ids or directly on the HTML element.

This example shows how text in the color rgb(214, 180, 186) looks like.

```
.text, #text, p{  
    color:rgb(214, 180, 186)  
}
```

If you want to add a text shadow in that color use the text-shadow property, you can generate a text shadow directly with our [CSS Text Shadow Generator](#).

Here you see how black text with a 4 pixel rgb(214, 180, 186) colored shadow looks like.

```
.shadow{ text-shadow: 4px 4px 2px rgb(214, 180, 186) }
```

## Border

The CSS property to change the border of an element to XYZ 52.9157, 50.4838, 53.4098 is called "border". The border property can be set on classes, ids or directly on the HTML element.

This example shows the color as border, it can be applied via the CSS property "border" or "border-color".

```
.border, #border, table{ border:4px solid rgb(214, 180, 186) }
```



If only the border color should be changed use the property `border-color`.

```
.border{ border-color:rgb(214, 180, 186) }
```

If you want to add a box shadow in that color use:

Here you see how a box with a 4 pixel `rgb(214, 180, 186)` colored shadow looks like.

```
.boxshadow{ -moz-box-shadow:4px 4px 4px 4px rgb(214, 180, 186); -webkit-box-shadow:4px 4px 4px 4px rgb(214, 180, 186); box-shadow:4px 4px 4px 4px rgb(214, 180, 186) }
```

# Background

The CSS property to change the background color of an element to XYZ 52.9157, 50.4838, 53.4098 is called "background". The background property can be set on classes, ids or directly on the HTML element.

```
.background, #background, body{  
background: rgb(214, 180, 186) }
```

If only the background color should be changed can be used:

```
.background{ background-color: rgb(214,  
180, 186) }
```

This example shows the color as background, it is applied via the CSS property "background".

To optimize and compress your CSS code, you can use our [online CSS compressor and optimizer](#) based on csstidy. If you want to create a linear or radial gradient as background or border, check our [CSS Gradient Generator](#).

Hey! You found this booklet interesting? Support Converting Colors with the new Membership Option!

The pro membership hides all ads, plus gives you double the colors in the color bucket, and more awesome pro features!

**[Learn more, Memberships starting at \\$2.50/m!](#)**

**Follow me  
on Twitter!**

@ConvertingColor