

Converting Colors

XYZ(53.0086, 52.6274, 59.3532)

Have a look what the booklet for
XYZ(53.0086, 52.6274, 59.3532)
contains.

XYZ(52.9110, 52.5053, 59.5704)	3
<i>Conversions</i>	4
<i>Details</i>	6
<i>Harmonies</i>	12
<i>Previews</i>	24
<i>Color Blindness Simulation</i>	28
<i>CSS Examples</i>	31

Color

**XYZ(52.9110, 52.5053,
59.5704)**

Conversions

Conversions Part 1

Format	Color
Hex	CDBBC4
RGB	205, 187, 196
RGB Percent	80%, 73%, 77%
CMY	0.1961, 0.2666, 0.2314
CMYK	0.00, 0.09, 0.04, 0.20
HSL	330°, 15%, 77%
HSV	330°, 9%, 80%
XYZ	52.9110, 52.5053, 59.5704
YIQ	193.4080, 7.8390, 6.6150

Conversions

Conversions Part 2

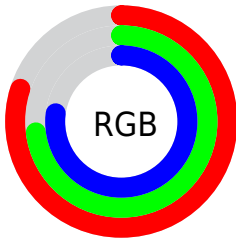
Format	Color
R_{YB}	205, 187, 196
Decimal	13482948
CIE _{Lab}	77.58, 7.94, -2.23
CIE _{LCh}	78, 8.249, 344.331
Yxy	52.5053, 0.3207, 0.3182
Android (android.graphics.Color)	4291673028 (0xFFCDBBC4)
YUV	193.4080, 1.2779, 10.1662
Hunter-Lab	72.4605, 3.5355, 1.9796

Details

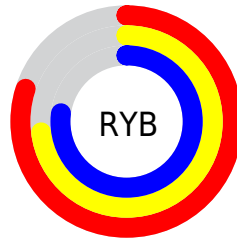
The XYZ color **52.9110, 52.5053, 59.5704** is a light color, and the websafe version is hex **CCCCCC**. A complement of this color would be **52.2907, 58.2144, 60.7079**, and the grayscale version is **50.9194, 53.5712, 58.3390**.

A 20% lighter version of the original color is **91.0202, 92.4530, 105.9764**, and **26.1701, 25.5825, 29.1498** is the 20% darker color. If you saturate the color by 10%, you get **47.7416, 43.9701, 52.2856**, and if you desaturate by 10%, it is **58.7839, 62.3186, 67.4845**.

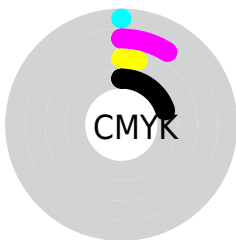
Distribution



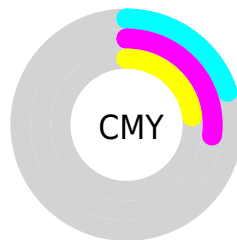
- Red (80%)
- Green (73%)
- Blue (77%)



- Red (80%)
- Yellow (73%)
- Blue (77%)



- Cyan (0%)
- Magenta (9%)
- Yellow (4%)
- Black (20%)



- Cyan (20%)
- Magenta (27%)
- Yellow (23%)

Brightness & Saturation Gradients

These gradients show how the XYZ color 52.9110, 52.5053, 59.5704 changes by changing the brightness by 10 percent. The first figure shows a shift by +10% for each color and the second figure -10%.

Similar to the brightness gradients but the following saturation gradients show a change of the XYZ color 52.9110, 52.5053, 59.5704 by changing the saturation by 10% instead.

■ 52.9110, 52.5053,
59.5704

■ 52.9110, 52.5053,
59.5704

388.2100,
396.3843, 440.7731

■ 37.9589, 37.4080,
42.6494

■ 93.6397, 93.8760,
105.7435

■ 26.1279, 25.5235,
29.2808

120.1470,
120.9182, 135.8327

■ 17.0525, 16.4675,
19.0459

151.2368,
152.7109, 171.1484

■ 10.3675, 9.8556,
11.5263

187.2744,
189.6383, 212.1091

■ 5.7074, 5.3033,
6.3034

228.6252,
232.0850, 259.1334

■ 2.7070, 2.4263,
2.9587

275.6544,

■ 1.0008, 0.8394,

280.4353, 312.6398

1.0736

328.7276,
335.0736, 373.0468

■ 0.0000, 0.0000,
0.0000

■ 52.9110, 52.5053,
59.5704

■ 52.9110, 52.5053,
59.5704

■ 47.7416, 43.9701,
52.2856

■ 58.7839, 62.3186,
67.4845

■ 43.2436, 36.6532,
45.6096

■ 65.3821, 73.4530,
76.0407

■ 39.3887, 30.5001,
39.5255

■ 72.7318, 85.9579,
85.2558

■ 36.1450, 25.4497,
34.0146

■ 76.2246, 90.6143,
93.6009

■ 33.4777, 21.4349,
29.0564

■ 77.7661, 91.2309,
101.7180

■ 31.3481, 18.3815,
24.6293

■ 78.9872, 91.7193,
108.1483

■ 29.7126, 16.2052,
20.7094

■ 28.5201, 14.8068,
17.2699

■ 27.6895, 14.0277,
14.2739

Harmonies

Analogous

The Analogous color harmony consists of three colors that are next to each other on the color wheel.



52.0749, 52.5053, 63.6737



52.9110, 52.5053, 59.5704



52.9303, 52.5053, 55.0264

Triad

The Triadic color harmony groups three colors that are evenly spaced from another and form a triangle on the color wheel.



52.9110, 52.5053, 59.5704



49.1507, 52.5053, 49.0877



47.7465, 52.5053, 63.5181

Complementary

The Complementary color scheme is a pair of colors which are on the opposite of each other on the color wheel.



52.9110, 52.5053, 59.5704



52.2907, 58.2144, 60.7079

Split Complementary

Split-complementary colors differ from the complementary color scheme. The scheme consists of three colors, the original color and two neighbors of the complement color.



46.9967, 52.5053, 59.3672



52.9110, 52.5053, 59.5704



47.7957, 52.5053, 51.1238

Square

The Square scheme is like the rectangle color scheme, but the four colors are evenly spaced on the color wheel.



52.9110, 52.5053, 59.5704



50.7362, 52.5053, 49.1356



47.0145, 52.5053, 54.8337



49.0824, 52.5053, 66.0342

Rectangle

The Rectangle color scheme consists of four colors that form a rectangle on the color wheel.



52.9110, 52.5053, 59.5704



52.4759, 52.5053, 52.3655



47.0145, 52.5053, 54.8337



47.4189, 52.5053, 62.2583

Sweetspot

The Sweet Spot groups the original color and five complimentary colors.



52.9125, 52.5076, 59.5715



92.0480, 94.9718, 104.8908



51.5567, 51.6867, 65.0176



19.5343, 20.0474, 22.2251



0.0000, 0.0000, 0.0000



20.3446, 21.4041, 23.3091

Same Dimension

The Same Dimension uses a secret algorithm to generate beautiful new colors.



52.9125, 52.5076, 59.5715



84.5685, 82.5200, 94.6681



51.9187, 52.1101, 54.3382



11.4423, 11.3057, 12.8637



17.2294, 8.7024, 8.9267



0.9272, 0.4643, 0.6623

Inverse Universe

The Inverse Universe completely reimagines the original color for something new.



52.9125, 52.5076, 59.5715



84.5685, 82.5200, 94.6681



53.3459, 58.6365, 66.2648



11.4423, 11.3057, 12.8637



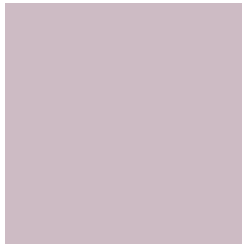
17.2294, 8.7024, 8.9267



0.9272, 0.4643, 0.6623

Previews

White Background



This preview shows how the XYZ color 52.9110, 52.5053, 59.5704 looks on a white background.

Color Contrast Check

Large Text (above 18pt) WCAG AA × Fail

Any Text WCAG AA × Fail

Large Text (above 18pt) WCAG AAA × Fail

Any Text WCAG AAA × Fail

Black Background



This preview shows how the XYZ color 52.9110, 52.5053, 59.5704 looks on a black background.

Color Contrast Check

Large Text (above 18pt) WCAG AA ✓ Pass

Any Text WCAG AA ✓ Pass

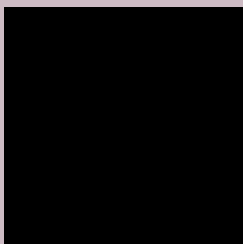
Large Text (above 18pt) WCAG AAA ✓ Pass

Any Text WCAG AAA ✓ Pass

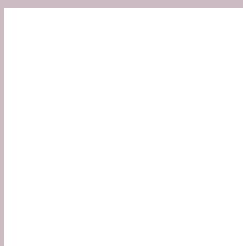
If you want to check with other color combinations, try the [Color Contrast Checker](#).

XYZ 52.9110, 52.5053, 59.5704

Background



This preview shows how black text looks on a background with the XYZ color 52.9110, 52.5053, 59.5704.



This preview shows how white text looks on a background with the XYZ color 52.9110, 52.5053,

Color Blindness Simulation

Color vision deficiency is a very complex topic, and I could not describe the different causes any better than Wikipedia does, so if you want to learn more, you should check out their [article about color blindness](#).

Dichromacy



Original Color

52.9110, 52.5053, 59.5704

Protanopia

50.8162, 52.6763, 60.9153

Deuteranopia

53.5351, 52.5132, 59.5390



Tritanopia

53.5551, 52.4567, 62.5608

Trichromacy



Original Color

52.9110, 52.5053, 59.5704

Protanomaly

51.5175, 52.7284, 60.2857

Deuteranomaly

53.2548, 52.3687, 59.5259

Tritanomaly

53.3213, 52.3631, 61.3296

Monochromacy



Original Color

52.9110, 52.5053, 59.5704

Achromatopsia

50.6879, 53.3276, 58.0738

Achromatomaly

51.3944, 53.0270, 58.5654

CSS Examples

Text

The CSS property to change the color of the text to XYZ 52.9110, 52.5053, 59.5704 is called "color". The color property can be set on classes, ids or directly on the HTML element.

This example shows how text in the color rgb(205, 187, 196) looks like.

```
.text, #text, p{  
    color:rgb(205, 187, 196)  
}
```

If you want to add a text shadow in that color use the text-shadow property, you can generate a text shadow directly with our [CSS Text Shadow Generator](#).

Here you see how black text with a 4 pixel rgb(205, 187, 196) colored shadow looks like.

```
.shadow{ text-shadow: 4px 4px 2px rgb(205, 187, 196) }
```

Border

The CSS property to change the border of an element to XYZ 52.9110, 52.5053, 59.5704 is called "border". The border property can be set on classes, ids or directly on the HTML element.

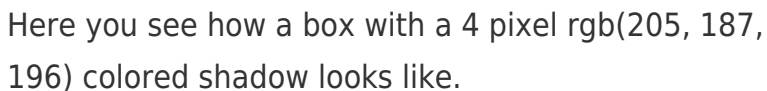
This example shows the color as border, it can be applied via the CSS property "border" or "border-color".

```
.border, #border, table{ border:4px solid rgb(205, 187, 196) }
```


If only the border color should be changed use the property `border-color`.

```
.border{ border-color:rgb(205, 187, 196) }
```

If you want to add a box shadow in that color use:



Here you see how a box with a 4 pixel `rgb(205, 187, 196)` colored shadow looks like.

```
.boxshadow{ -moz-box-shadow:4px 4px 4px 4px rgb(205, 187, 196); -webkit-box-shadow:4px 4px 4px 4px rgb(205, 187, 196); box-shadow:4px 4px 4px 4px rgb(205, 187, 196) }
```

Background

The CSS property to change the background color of an element to XYZ 52.9110, 52.5053, 59.5704 is called "background". The background property can be set on classes, ids or directly on the HTML element.

```
.background, #background, body{  
background: rgb(205, 187, 196) }
```

If only the background color should be changed can be used:

```
.background{ background-color: rgb(205,  
187, 196) }
```

This example shows the color as background, it is applied via the CSS property "background".

To optimize and compress your CSS code, you can use our [online CSS compressor and optimizer](#) based on csstidy. If you want to create a linear or radial gradient as background or border, check our [CSS Gradient Generator](#).

Hey! You found this booklet interesting? Support Converting Colors with the new Membership Option!

The pro membership hides all ads, plus gives you double the colors in the color bucket, and more awesome pro features!

[Learn more, Memberships starting at \\$2.50/m!](#)

**Follow me
on Twitter!**

@ConvertingColor