

Converting Colors

XYZ(53.0329, 50.5530, 50.0226)

Have a look what the booklet for
XYZ(53.0329, 50.5530, 50.0226)
contains.

XYZ(53.1747, 50.6895, 50.1615)	3
<i>Conversions</i>	4
<i>Details</i>	6
<i>Harmonies</i>	12
<i>Previews</i>	24
<i>Color Blindness Simulation</i>	28
<i>CSS Examples</i>	31

Color

**XYZ(53.1747, 50.6895,
50.1615)**

Conversions

Conversions Part 1

Format	Color
Hex	D9B4B4
RGB	217, 180, 180
RGB Percent	85%, 71%, 71%
CMY	0.1490, 0.2941, 0.2941
CMYK	0.00, 0.17, 0.17, 0.15
HSL	0°, 33%, 78%
HSV	0°, 17%, 85%
XYZ	53.1747, 50.6895, 50.1615
YIQ	191.0630, 22.0520, 7.8440

Conversions

Conversions Part 2

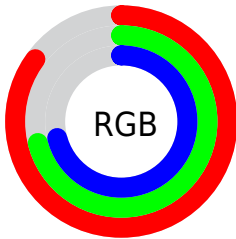
Format	Color
R_{YB}	217, 180, 180
Decimal	14267572
CIE _{Lab}	76.49, 13.33, 5.00
CIE _{LCh}	76, 14.236, 20.563
Yxy	50.6895, 0.3452, 0.3291
Android (android.graphics.Color)	4292457652 (0xFFD9B4B4)
YUV	191.0630, -5.4541, 22.7467
Hunter-Lab	71.1966, 8.7226, 8.0649

Details

The XYZ color **53.1747, 50.6895, 50.1615** is a light color, and the websafe version is hex **CC9999**. A complement of this color would be **56.1591, 64.3372, 75.1044**, and the grayscale version is **49.5806, 52.1627, 56.8051**.

A 20% lighter version of the original color is **86.3758, 87.3070, 91.6563**, and **26.3204, 24.3924, 23.3996** is the 20% darker color. If you saturate the color by 10%, you get **47.0923, 41.7896, 38.0681**, and if you desaturate by 10%, it is **60.2917, 61.1038, 64.3084**.

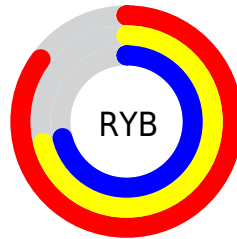
Distribution



Red (85%)

Green (71%)

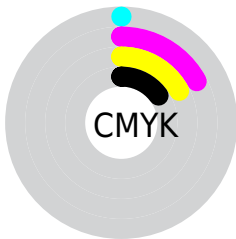
Blue (71%)



Red (85%)

Yellow (71%)

Blue (71%)

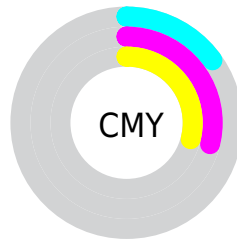


Cyan (0%)

Magenta (17%)

Yellow (17%)

Black (15%)



Cyan (15%)


Magenta (29%)

Yellow (29%)

Brightness & Saturation Gradients


These gradients show how the XYZ color 53.1747, 50.6895, 50.1615 changes by changing the brightness by 10 percent. The first figure shows a shift by +10% for each color and the second figure -10%.


Similar to the brightness gradients but the following saturation gradients show a change of the XYZ color 53.1747, 50.6895, 50.1615 by changing the saturation by 10% instead.


 53.1747, 50.6895,
50.1615

 53.1747, 50.6895,
50.1615


389.2049,
389.3562, 404.0503

 38.1703, 35.9616,
35.1697


 94.0254, 91.1956,
91.8129

 26.2927, 24.4045,
23.5090


120.6024,
117.7426, 119.3095

 17.1766, 15.6340,
14.7610


151.7676,
148.9981, 151.8115

 10.4565, 9.2655,
8.5070

187.8865,
185.3464, 189.7373

 5.7673, 4.9148,
4.3287

229.3243,
227.1720, 233.5056

 2.7434, 2.1973,
1.8073

276.4464,

 1.0196, 0.7185,

274.8592, 283.5348

0.4328

329.6181,
328.7925, 340.2435

■ 0.0000, 0.0000,
0.0000

■ 53.1747, 50.6895,
50.1615

■ 53.1747, 50.6895,
50.1615

■ 47.0923, 41.7896,
38.0681

■ 60.2917, 61.1038,
64.3084

■ 41.9925, 34.3271,
27.9298

■ 68.4838, 73.0910,
80.5946

■ 37.8250, 28.2287,
19.6450

■ 77.7946, 86.7150,
99.1049

■ 34.5333, 23.4121,
13.1016

■ 82.4254, 93.4918,
108.3092

■ 32.0551, 19.7857,
8.1754

■ 30.3197, 17.2461,
4.7260

■ 29.2444, 15.6724,
2.5887

■ 28.7202, 14.9053,
1.5471

■ 28.6157, 14.7523,
1.3393

Harmonies

Analogous

The Analogous color harmony consists of three colors that are next to each other on the color wheel.



53.4518, 50.6895, 57.6516



53.1747, 50.6895, 50.1615



51.5324, 50.6895, 44.5451

Triad

The Triadic color harmony groups three colors that are evenly spaced from another and form a triangle on the color wheel.



53.1747, 50.6895, 50.1615



44.3016, 50.6895, 46.3249



47.3375, 50.6895, 71.0957

Complementary

The Complementary color scheme is a pair of colors which are on the opposite of each other on the color wheel.



53.1747, 50.6895, 50.1615



56.1591, 64.3372, 75.1044

Split Complementary

Split-complementary colors differ from the complementary color scheme. The scheme consists of three colors, the original color and two neighbors of the complement color.



44.9740, 50.6895, 67.4137



53.1747, 50.6895, 50.1615



43.2646, 50.6895, 52.8039

Square

The Square scheme is like the rectangle color scheme, but the four colors are evenly spaced on the color wheel.



53.1747, 50.6895, 50.1615



46.3886, 50.6895, 42.4770



43.5061, 50.6895, 60.5486



50.0145, 50.6895, 70.2212

Rectangle

The Rectangle color scheme consists of four colors that form a rectangle on the color wheel.



53.1747, 50.6895, 50.1615



49.9169, 50.6895, 42.3936



43.5061, 50.6895, 60.5486



46.4816, 50.6895, 70.3379

Sweetspot

The Sweet Spot groups the original color and five complimentary colors.



53.1761, 50.6918, 50.1626



89.1316, 91.3398, 97.1340



57.4614, 52.4046, 72.7325



18.9067, 19.3000, 20.4504



0.0000, 0.0000, 0.0000



20.3446, 21.4041, 23.3091

Same Dimension

The Same Dimension uses a secret algorithm to generate beautiful new colors.



53.1761, 50.6918, 50.1626



73.7332, 68.8079, 66.5218



57.1625, 58.6647, 51.4914



13.0562, 13.0518, 13.5567



17.3224, 8.9303, 0.8107



1.1223, 0.5786, 0.0525

Inverse Universe

The Inverse Universe completely reimagines the original color for something new.



56.1591, 64.3372, 75.1044



78.7101, 91.5739, 108.1348



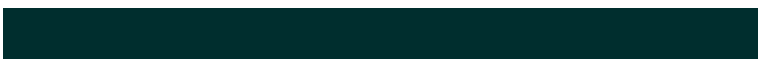
51.6559, 55.3308, 73.6033



13.4448, 14.8293, 16.8059



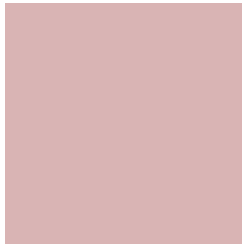
22.5984, 33.0663, 44.9298



1.4641, 2.1423, 2.9108

Previews

White Background



This preview shows how the XYZ color 53.1747, 50.6895, 50.1615 looks on a white background.

Color Contrast Check

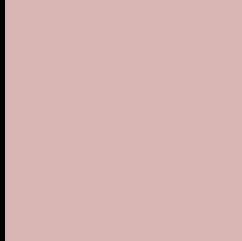
Large Text (above 18pt) WCAG AA × Fail

Any Text WCAG AA × Fail

Large Text (above 18pt) WCAG AAA × Fail

Any Text WCAG AAA × Fail

Black Background



This preview shows how the XYZ color 53.1747, 50.6895, 50.1615 looks on a black background.

Color Contrast Check

Large Text (above 18pt) WCAG AA ✓ Pass

Any Text WCAG AA ✓ Pass

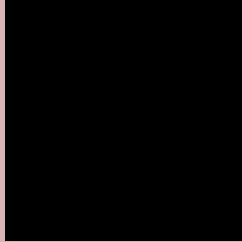
Large Text (above 18pt) WCAG AAA ✓ Pass

Any Text WCAG AAA ✓ Pass

If you want to check with other color combinations, try the [Color Contrast Checker](#).

XYZ 53.1747, 50.6895, 50.1615

Background



This preview shows how black text looks on a background with the XYZ color 53.1747, 50.6895, 50.1615.



This preview shows how white text looks on a background with the XYZ color 53.1747, 50.6895,

Color Blindness Simulation

Color vision deficiency is a very complex topic, and I could not describe the different causes any better than Wikipedia does, so if you want to learn more, you should check out their [article about color blindness](#).

Dichromacy



Original Color

53.1747, 50.6895, 50.1615

Protanopia

48.6273, 50.7646, 52.5830

Deuteranopia

51.8301, 50.6001, 50.2151



Tritanopia

54.3483, 50.5520, 56.7622

Trichromacy



Original Color

53.1747, 50.6895, 50.1615

Protanomaly

50.2533, 50.6734, 51.9321

Deuteranomaly

52.2027, 50.4892, 50.1740

Tritanomaly

54.1106, 50.7765, 54.5259

Monochromacy



Original Color

53.1747, 50.6895, 50.1615

Achromatopsia

49.5206, 52.0996, 56.7364

Achromatomaly

50.5594, 51.4079, 54.2717

CSS Examples

Text

The CSS property to change the color of the text to XYZ 53.1747, 50.6895, 50.1615 is called "color". The color property can be set on classes, ids or directly on the HTML element.

This example shows how text in the color `rgb(217, 180, 180)` looks like.

```
.text, #text, p{  
    color:rgb(217, 180, 180)  
}
```

If you want to add a text shadow in that color use the text-shadow property, you can generate a text shadow directly with our [CSS Text Shadow Generator](#).

Here you see how black text with a 4 pixel rgb(217, 180, 180) colored shadow looks like.

```
.shadow{ text-shadow: 4px 4px 2px rgb(217, 180, 180) }
```

Border

The CSS property to change the border of an element to XYZ 53.1747, 50.6895, 50.1615 is called "border". The border property can be set on classes, ids or directly on the HTML element.

This example shows the color as border, it can be applied via the CSS property "border" or "border-color".

```
.border, #border, table{ border:4px solid rgb(217, 180, 180) }
```


If only the border color should be changed use the property border-color.

```
.border{ border-color:rgb(217, 180, 180) }
```

If you want to add a box shadow in that color use:

Here you see how a box with a 4 pixel rgb(217, 180, 180) colored shadow looks like.

```
.boxshadow{ -moz-box-shadow:4px 4px 4px  
4px rgb(217, 180, 180); -webkit-box-  
shadow:4px 4px 4px 4px rgb(217, 180, 180);  
box-shadow:4px 4px 4px 4px rgb(217, 180,  
180) }
```

Background

The CSS property to change the background color of an element to XYZ 53.1747, 50.6895, 50.1615 is called "background". The background property can be set on classes, ids or directly on the HTML element.

```
.background, #background, body{  
background: rgb(217, 180, 180) }
```

If only the background color should be changed can be used:

```
.background{ background-color: rgb(217,  
180, 180) }
```

This example shows the color as background, it is applied via the CSS property "background".

To optimize and compress your CSS code, you can use our [online CSS compressor and optimizer](#) based on csstidy. If you want to create a linear or radial gradient as background or border, check our [CSS Gradient Generator](#).

Hey! You found this booklet interesting? Support Converting Colors with the new Membership Option!

The pro membership hides all ads, plus gives you double the colors in the color bucket, and more awesome pro features!

[Learn more, Memberships starting at \\$2.50/m!](#)

**Follow me
on Twitter!**

@ConvertingColor