

Converting Colors

XYZ(53.2201, 53.1670, 53.9668)

Have a look what the booklet for
XYZ(53.2201, 53.1670, 53.9668)
contains.

XYZ(53.1406, 53.0669, 53.8965)	3
<i>Conversions</i>	4
<i>Details</i>	6
<i>Harmonies</i>	12
<i>Previews</i>	24
<i>Color Blindness Simulation</i>	28
<i>CSS Examples</i>	31

Color

**XYZ(53.1406, 53.0669,
53.8965)**

Conversions

Conversions Part 1

Format	Color
Hex	D1BCBA
RGB	209, 188, 186
RGB Percent	82%, 74%, 73%
CMY	0.1804, 0.2627, 0.2706
CMYK	0.00, 0.10, 0.11, 0.18
HSL	5°, 20%, 77%
HSV	5°, 11%, 82%
XYZ	53.1406, 53.0669, 53.8965
YIQ	194.0510, 13.1580, 3.8300

Conversions

Conversions Part 2

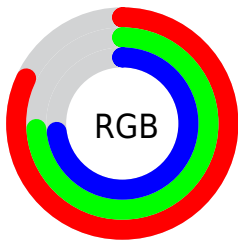
Format	Color
R _Y B	209, 188, 186
Decimal	13745338
CIE Lab	77.91, 7.10, 3.71
CIE LCh	78, 8.015, 27.596
Yxy	53.0669, 0.3319, 0.3315
Android (android.graphics.Color)	4291935418 (0xFFD1BCBA)
YUV	194.0510, -3.9691, 13.1103
Hunter-Lab	72.8470, 2.7302, 7.1267

Details

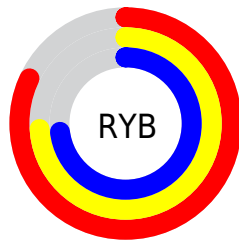
The XYZ color **53.1406, 53.0669, 53.8965** is a light color, and the websafe version is hex **CCCCCC**. A complement of this color would be **54.0709, 59.6670, 68.9891**, and the grayscale version is **51.3269, 53.9998, 58.8058**.

A 20% lighter version of the original color is **89.6177, 92.3722, 97.1107**, and **26.2240, 25.8914, 25.8057** is the 20% darker color. If you saturate the color by 10%, you get **47.2696, 44.6241, 41.7676**, and if you desaturate by 10%, it is **59.8784, 62.7221, 67.9190**.

Distribution



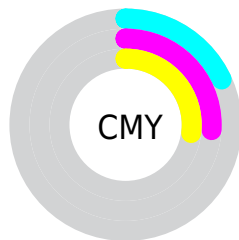
- Red (82%)
- Green (74%)
- Blue (73%)



- Red (82%)
- Yellow (74%)
- Blue (73%)



- Cyan (0%)
- Magenta (10%)
- Yellow (11%)
- Black (18%)





- Cyan (18%)
- Magenta (26%)
- Yellow (27%)

Brightness & Saturation Gradients


These gradients show how the XYZ color 53.1406, 53.0669, 53.8965 changes by changing the brightness by 10 percent. The first figure shows a shift by +10% for each color and the second figure -10%.

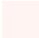
Similar to the brightness gradients but the following saturation gradients show a change of the XYZ color 53.1406, 53.0669, 53.8965 by changing the saturation by 10% instead.


 53.1406, 53.0669,
53.8965

 53.1406, 53.0669,
53.8965


389.0763,
398.5417, 418.8787

 38.1430, 37.8562,
38.1263


 93.9755, 94.7028,
97.3771

 26.2714, 25.8711,
25.7781


120.5435,
121.8968, 125.9247

 17.1605, 16.7272,
16.4335

151.6990,
153.8540, 159.5684

 10.4450, 10.0402,
9.6737

187.8074,
190.9587, 198.7268

 5.7595, 5.4256,
5.0804

229.2339,
233.5955, 243.8185

 2.7387, 2.4991,
2.2350

276.3440,

 1.0171, 0.8762,

282.1487, 295.2620

0.6944

329.5031,
337.0026, 353.4759

■ 0.0000, 0.0000,
0.0000

■ 53.1406, 53.0669,
53.8965

■ 53.1406, 53.0669,
53.8965

■ 47.2696, 44.6241,
41.7676

■ 59.8784, 62.7221,
67.9190

■ 42.2260, 37.3389,
31.4478

■ 67.5116, 73.6276,
83.9077

■ 37.9738, 31.1632,
22.8515

■ 76.0730, 85.8282,
101.9357

■ 34.4727, 26.0423,
15.8847

■ 80.1047, 92.2954,
108.2006

■ 31.6789, 21.9172,
10.4442

■ 29.5438, 18.7230,
6.4155

■ 28.0129, 16.3870,
3.6675

■ 27.0226, 14.8258,
2.0446

■ 26.5144, 13.9948,
1.3038

Harmonies

Analogous

The Analogous color harmony consists of three colors that are next to each other on the color wheel.



53.4915, 53.0669, 58.1415



53.1406, 53.0669, 53.8965



52.0612, 53.0669, 50.8349

Triad

The Triadic color harmony groups three colors that are evenly spaced from another and form a triangle on the color wheel.



53.1406, 53.0669, 53.8965



47.9510, 53.0669, 53.3035



50.3129, 53.0669, 66.7848

Complementary

The Complementary color scheme is a pair of colors which are on the opposite of each other on the color wheel.



53.1406, 53.0669, 53.8965



54.0709, 59.6670, 68.9891

Split Complementary

Split-complementary colors differ from the complementary color scheme. The scheme consists of three colors, the original color and two neighbors of the complement color.



48.8499, 53.0669, 65.3323



53.1406, 53.0669, 53.8965



47.5039, 53.0669, 57.4216

Square

The Square scheme is like the rectangle color scheme, but the four colors are evenly spaced on the color wheel.



53.1406, 53.0669, 53.8965



49.0633, 53.0669, 50.5052



47.8296, 53.0669, 61.8475



51.8391, 53.0669, 65.7237

Rectangle

The Rectangle color scheme consists of four colors that form a rectangle on the color wheel.



53.1406, 53.0669, 53.8965



51.0848, 53.0669, 49.7992



47.8296, 53.0669, 61.8475



49.7977, 53.0669, 66.5728

Sweetspot

The Sweet Spot groups the original color and five complimentary colors.



53.1421, 53.0692, 53.8976



91.6550, 95.1420, 101.8126



55.1267, 53.1829, 66.4453



19.4284, 20.0929, 21.3969



0.0000, 0.0000, 0.0000



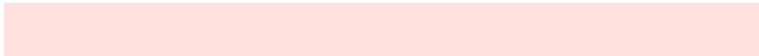
20.3446, 21.4041, 23.3091

Same Dimension

The Same Dimension uses a secret algorithm to generate beautiful new colors.



53.1421, 53.0692, 53.8976



81.2592, 80.2348, 80.2059



55.6774, 58.1400, 54.7427



11.8904, 11.9714, 12.2961



16.3785, 8.6900, 0.8141



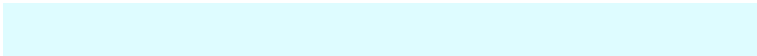
0.9451, 0.5445, 0.0553

Inverse Universe

The Inverse Universe completely reimagines the original color for something new.



54.0709, 59.6670, 68.9891



82.9739, 92.4171, 108.0728



51.4051, 54.3354, 68.1005



12.0666, 13.2235, 15.1601



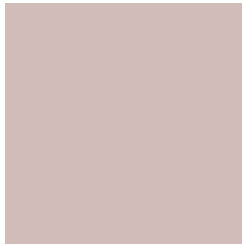
18.5918, 25.8301, 41.1983



1.0660, 1.4972, 2.3124

Previews

White Background



This preview shows how the XYZ color 53.1406, 53.0669, 53.8965 looks on a white background.

Color Contrast Check

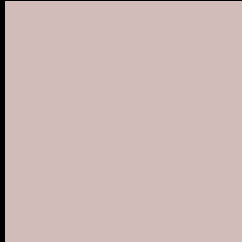
Large Text (above 18pt) WCAG AA × Fail

Any Text WCAG AA × Fail

Large Text (above 18pt) WCAG AAA × Fail

Any Text WCAG AAA × Fail

Black Background



This preview shows how the XYZ color 53.1406, 53.0669, 53.8965 looks on a black background.

Color Contrast Check

Large Text (above 18pt) WCAG AA ✓ Pass

Any Text WCAG AA ✓ Pass

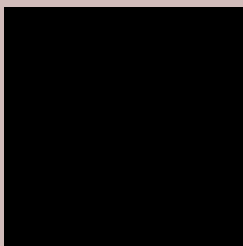
Large Text (above 18pt) WCAG AAA ✓ Pass

Any Text WCAG AAA ✓ Pass

If you want to check with other color combinations, try the [Color Contrast Checker](#).

XYZ 53.1406, 53.0669, 53.8965

Background



This preview shows how black text looks on a background with the XYZ color 53.1406, 53.0669, 53.8965.



This preview shows how white text looks on a background with the XYZ color 53.1406, 53.0669,

Color Blindness Simulation

Color vision deficiency is a very complex topic, and I could not describe the different causes any better than Wikipedia does, so if you want to learn more, you should check out their [article about color blindness](#).

Dichromacy



Original Color

53.1406, 53.0669, 53.8965

Protanopia

50.9527, 53.2004, 55.1602

Deuteranopia

54.1534, 52.9591, 53.8223



Tritanopia

54.8482, 53.1368, 62.0092

Trichromacy



Original Color

53.1406, 53.0669, 53.8965

Protanomaly

51.6878, 53.2670, 54.5710

Deuteranomaly

53.7846, 53.0829, 53.8656

Tritanomaly

54.1990, 53.1824, 59.0384

Monochromacy



Original Color

53.1406, 53.0669, 53.8965

Achromatopsia

51.2775, 53.9479, 58.7493

Achromatomaly

51.8068, 53.6030, 56.9061

CSS Examples

Text

The CSS property to change the color of the text to XYZ 53.1406, 53.0669, 53.8965 is called "color". The color property can be set on classes, ids or directly on the HTML element.

This example shows how text in the color rgb(209, 188, 186) looks like.

```
.text, #text, p{  
    color:rgb(209, 188, 186)  
}
```

If you want to add a text shadow in that color use the text-shadow property, you can generate a text shadow directly with our [CSS Text Shadow Generator](#).

Here you see how black text with a 4 pixel rgb(209, 188, 186) colored shadow looks like.

```
.shadow{ text-shadow: 4px 4px 2px rgb(209, 188, 186) }
```

Border

The CSS property to change the border of an element to XYZ 53.1406, 53.0669, 53.8965 is called "border". The border property can be set on classes, ids or directly on the HTML element.

This example shows the color as border, it can be applied via the CSS property "border" or "border-color".

```
.border, #border, table{ border:4px solid rgb(209, 188, 186) }
```


If only the border color should be changed use the property `border-color`.

```
.border{ border-color:rgb(209, 188, 186) }
```

If you want to add a box shadow in that color use:

Here you see how a box with a 4 pixel `rgb(209, 188, 186)` colored shadow looks like.

```
.boxshadow{ -moz-box-shadow:4px 4px 4px  
4px rgb(209, 188, 186); -webkit-box-  
shadow:4px 4px 4px 4px rgb(209, 188, 186);  
box-shadow:4px 4px 4px 4px rgb(209, 188,  
186) }
```

Background

The CSS property to change the background color of an element to XYZ 53.1406, 53.0669, 53.8965 is called "background". The background property can be set on classes, ids or directly on the HTML element.

```
.background, #background, body{  
background: rgb(209, 188, 186) }
```

If only the background color should be changed can be used:

```
.background{ background-color: rgb(209,  
188, 186) }
```

This example shows the color as background, it is applied via the CSS property "background".

To optimize and compress your CSS code, you can use our [online CSS compressor and optimizer](#) based on csstidy. If you want to create a linear or radial gradient as background or border, check our [CSS Gradient Generator](#).

Hey! You found this booklet interesting? Support Converting Colors with the new Membership Option!

The pro membership hides all ads, plus gives you double the colors in the color bucket, and more awesome pro features!

[Learn more, Memberships starting at \\$2.50/m!](#)

**Follow me
on Twitter!**

@ConvertingColor