

Converting Colors

XYZ(53.3534, 53.7701, 56.4542)

Have a look what the booklet for
XYZ(53.3534, 53.7701, 56.4542)
contains.

XYZ(53.4398, 53.8100, 56.2850)	3
<i>Conversions</i>	4
<i>Details</i>	6
<i>Harmonies</i>	12
<i>Previews</i>	24
<i>Color Blindness Simulation</i>	28
<i>CSS Examples</i>	31

Color

**XYZ(53.4398, 53.8100,
56.2850)**

Conversions

Conversions Part 1

Format	Color
Hex	CFBEBE
RGB	207, 190, 190
RGB Percent	81%, 75%, 75%
CMY	0.1882, 0.2549, 0.2549
CMYK	0.00, 0.08, 0.08, 0.19
HSL	0°, 15%, 78%
HSV	0°, 8%, 81%
XYZ	53.4398, 53.8100, 56.2850
YIQ	195.0830, 10.1320, 3.6040

Conversions

Conversions Part 2

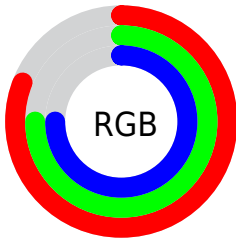
Format	Color
RYB	207, 190, 190
Decimal	13614782
CIELab	78.35, 5.99, 2.16
CIELCh	78, 6.372, 19.832
Yxy	53.8100, 0.3268, 0.3290
Android (android.graphics.Color)	4291804862 (0xFFCFBEBE)
YUV	195.0830, -2.5059, 10.4512
Hunter-Lab	73.3553, 1.6666, 5.8559

Details

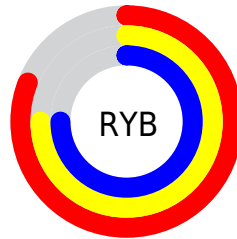
The XYZ color **53.4398, 53.8100, 56.2850** is a light color, and the websafe version is hex **CCCCCC**. A complement of this color would be **54.8103, 60.0766, 67.7391**, and the grayscale version is **51.9327, 54.6372, 59.4999**.

A 20% lighter version of the original color is **90.8303, 93.8254, 100.5116**, and **26.5979, 26.4698, 27.3742** is the 20% darker color. If you saturate the color by 10%, you get **47.1677, 44.6326, 43.8135**, and if you desaturate by 10%, it is **60.6728, 64.3936, 70.6634**.

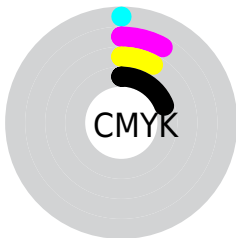
Distribution



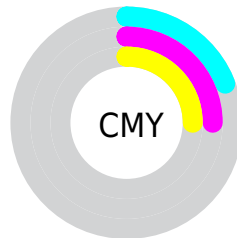
- Red (81%)
- Green (75%)
- Blue (75%)



- Red (81%)
- Yellow (75%)
- Blue (75%)



- Cyan (0%)
- Magenta (8%)
- Yellow (8%)
- Black (19%)



- Cyan (19%)
- Magenta (25%)
- Yellow (25%)

Brightness & Saturation Gradients

These gradients show how the XYZ color 53.4398, 53.8100, 56.2850 changes by changing the brightness by 10 percent. The first figure shows a shift by +10% for each color and the second figure -10%.

Similar to the brightness gradients but the following saturation gradients show a change of the XYZ color 53.4398, 53.8100, 56.2850 by changing the saturation by 10% instead.

■ 53.4398, 53.8100,
56.2850

■ 53.4398, 53.8100,
56.2850

390.2035,
401.3851, 428.1831

■ 38.3829, 38.4498,
40.0259

■ 94.4129, 95.7952,
100.9111

■ 26.4585, 26.3320,
27.2448

121.0598,
123.1890, 130.1152

■ 17.3015, 17.0721,
17.5231

152.3008,
155.3628, 164.4715

■ 10.5463, 10.2859,
10.4423

188.5011,
192.7009, 204.3983

■ 5.8277, 5.5890,
5.5838

230.0262,
235.5878, 250.3144

■ 2.7802, 2.5968,
2.5290

277.2414,

■ 1.0386, 0.9251,

284.4079, 302.6382

0.8555

330.5120,
339.5455, 361.7883

■ 0.0000, 0.0000,
0.0000

■ 53.4398, 53.8100,
56.2850

■ 53.4398, 53.8100,
56.2850

■ 47.1677, 44.6326,
43.8135

■ 60.6728, 64.3936,
70.6634

■ 41.8118, 36.7956,
33.1657

■ 68.8999, 76.4317,
87.0204

■ 37.3306, 30.2384,
24.2570

■ 78.1584, 89.9788,
105.4282

■ 33.6777, 24.8931,
16.9953

■ 79.5424, 92.0055,
108.1743

■ 30.8023, 20.6855,
11.2795

■ 28.6482, 17.5332,
6.9979

■ 27.1515, 15.3429,
4.0232

■ 26.2372, 14.0047,
2.2065

■ 25.7933, 13.3549,
1.3246

Harmonies

Analogous

The Analogous color harmony consists of three colors that are next to each other on the color wheel.



53.5478, 53.8100, 59.8139



53.4398, 53.8100, 56.2850



52.7112, 53.8100, 53.4846

Triad

The Triadic color harmony groups three colors that are evenly spaced from another and form a triangle on the color wheel.



53.4398, 53.8100, 56.2850



49.3296, 53.8100, 54.2601



50.7215, 53.8100, 65.6316

Complementary

The Complementary color scheme is a pair of colors which are on the opposite of each other on the color wheel.



53.4398, 53.8100, 56.2850



54.8103, 60.0766, 67.7391

Split Complementary

Split-complementary colors differ from the complementary color scheme. The scheme consists of three colors, the original color and two neighbors of the complement color.



49.6097, 53.8100, 64.0103



53.4398, 53.8100, 56.2850



48.8148, 53.8100, 57.3828

Square

The Square scheme is like the rectangle color scheme, but the four colors are evenly spaced on the color wheel.



53.4398, 53.8100, 56.2850



50.3335, 53.8100, 52.3489



48.9164, 53.8100, 60.9570



51.9647, 53.8100, 65.3083

Rectangle

The Rectangle color scheme consists of four colors that form a rectangle on the color wheel.



53.4398, 53.8100, 56.2850



51.9782, 53.8100, 52.3617



48.9164, 53.8100, 60.9570



50.3204, 53.8100, 65.2935

Sweetspot

The Sweet Spot groups the original color and five complimentary colors.



53.4413, 53.8124, 56.2862



92.6345, 96.4656, 104.0977



55.4087, 54.5981, 66.6501



19.8529, 20.6846, 22.3315



0.0000, 0.0000, 0.0000



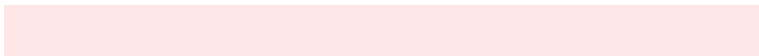
20.3446, 21.4041, 23.3091

Same Dimension

The Same Dimension uses a secret algorithm to generate beautiful new colors.



53.4413, 53.8124, 56.2862



83.6122, 83.2639, 86.1600



55.3356, 57.6009, 56.9176



11.8090, 11.8086, 12.2689



16.2128, 8.3586, 0.7589



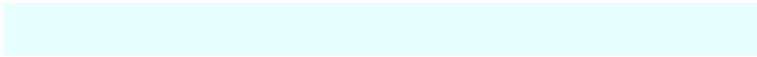
0.9066, 0.4675, 0.0425

Inverse Universe

The Inverse Universe completely reimagines the original color for something new.



54.8103, 60.0766, 67.7391



86.2811, 95.4769, 108.4891



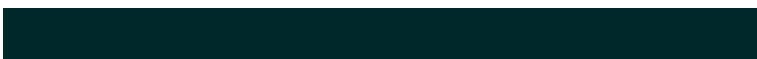
52.8069, 56.0700, 67.0714



12.1582, 13.4067, 15.1906



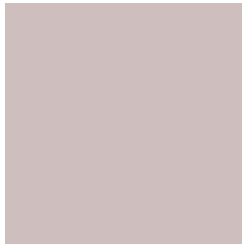
21.1473, 30.9412, 42.0502



1.1825, 1.7302, 2.3512

Previews

White Background



This preview shows how the XYZ color 53.4398, 53.8100, 56.2850 looks on a white background.

Color Contrast Check

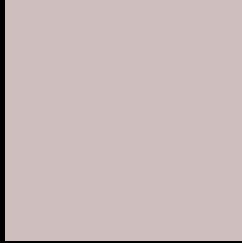
Large Text (above 18pt) WCAG AA × Fail

Any Text WCAG AA × Fail

Large Text (above 18pt) WCAG AAA × Fail

Any Text WCAG AAA × Fail

Black Background



This preview shows how the XYZ color 53.4398, 53.8100, 56.2850 looks on a black background.

Color Contrast Check

Large Text (above 18pt) WCAG AA ✓ Pass

Any Text WCAG AA ✓ Pass

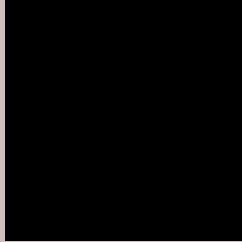
Large Text (above 18pt) WCAG AAA ✓ Pass

Any Text WCAG AAA ✓ Pass

If you want to check with other color combinations, try the [Color Contrast Checker](#).

XYZ 53.4398, 53.8100, 56.2850

Background



This preview shows how black text looks on a background with the XYZ color 53.4398, 53.8100, 56.2850.



This preview shows how white text looks on a background with the XYZ color 53.4398, 53.8100,

Color Blindness Simulation

Color vision deficiency is a very complex topic, and I could not describe the different causes any better than Wikipedia does, so if you want to learn more, you should check out their [article about color blindness](#).

Dichromacy



Original Color

53.4398, 53.8100, 56.2850

Protanopia

51.8731, 53.9515, 57.5488

Deuteranopia

55.0090, 53.9803, 56.2351



Tritanopia

55.0572, 53.8335, 63.9890

Trichromacy



Original Color

53.4398, 53.8100, 56.2850

Protanomaly

52.3410, 53.8784, 56.9311

Deuteranomaly

54.3558, 53.9618, 56.2660

Tritanomaly

54.4031, 53.8823, 60.9591

Monochromacy



Original Color

53.4398, 53.8100, 56.2850

Achromatopsia

51.8711, 54.5724, 59.4294

Achromatomaly

52.2488, 54.1323, 58.1468

CSS Examples

Text

The CSS property to change the color of the text to XYZ 53.4398, 53.8100, 56.2850 is called "color". The color property can be set on classes, ids or directly on the HTML element.

This example shows how text in the color `rgb(207, 190, 190)` looks like.

```
.text, #text, p{  
    color:rgb(207, 190, 190)  
}
```

If you want to add a text shadow in that color use the text-shadow property, you can generate a text shadow directly with our [CSS Text Shadow Generator](#).

Here you see how black text with a 4 pixel rgb(207, 190, 190) colored shadow looks like.

```
.shadow{ text-shadow: 4px 4px 2px rgb(207, 190, 190) }
```

Border

The CSS property to change the border of an element to XYZ 53.4398, 53.8100, 56.2850 is called "border". The border property can be set on classes, ids or directly on the HTML element.

This example shows the color as border, it can be applied via the CSS property "border" or "border-color".

```
.border, #border, table{ border:4px solid rgb(207, 190, 190) }
```


If only the border color should be changed use the property `border-color`.

```
.border{ border-color:rgb(207, 190, 190) }
```

If you want to add a box shadow in that color use:

Here you see how a box with a 4 pixel `rgb(207, 190, 190)` colored shadow looks like.

```
.boxshadow{ -moz-box-shadow:4px 4px 4px  
4px rgb(207, 190, 190); -webkit-box-  
shadow:4px 4px 4px 4px rgb(207, 190, 190);  
box-shadow:4px 4px 4px 4px rgb(207, 190,  
190) }
```

Background

The CSS property to change the background color of an element to XYZ 53.4398, 53.8100, 56.2850 is called "background". The background property can be set on classes, ids or directly on the HTML element.

```
.background, #background, body{  
background: rgb(207, 190, 190) }
```

If only the background color should be changed can be used:

```
.background{ background-color: rgb(207,  
190, 190) }
```

This example shows the color as background, it is applied via the CSS property "background".

To optimize and compress your CSS code, you can use our [online CSS compressor and optimizer](#) based on csstidy. If you want to create a linear or radial gradient as background or border, check our [CSS Gradient Generator](#).

Hey! You found this booklet interesting? Support Converting Colors with the new Membership Option!

The pro membership hides all ads, plus gives you double the colors in the color bucket, and more awesome pro features!

[Learn more, Memberships starting at \\$2.50/m!](#)

**Follow me
on Twitter!**

@ConvertingColor