

Converting Colors

XYZ(53.3701, 51.6905, 52.0108)

Have a look what the booklet for
XYZ(53.3701, 51.6905, 52.0108)
contains.

XYZ(53.2123, 51.5820, 51.9515)	3
<i>Conversions</i>	4
<i>Details</i>	6
<i>Harmonies</i>	12
<i>Previews</i>	24
<i>Color Blindness Simulation</i>	28
<i>CSS Examples</i>	31

Color

**XYZ(53.2123, 51.5820,
51.9515)**

Conversions

Conversions Part 1

Format	Color
Hex	D6B7B7
RGB	214, 183, 183
RGB Percent	84%, 72%, 72%
CMY	0.1608, 0.2823, 0.2823
CMYK	0.00, 0.14, 0.14, 0.16
HSL	0°, 27%, 78%
HSV	0°, 14%, 84%
XYZ	53.2123, 51.5820, 51.9515
YIQ	192.2690, 18.4760, 6.5720

Conversions

Conversions Part 2

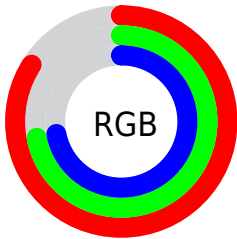
Format	Color
R _Y B	214, 183, 183
Decimal	14071735
CIE Lab	77.03, 11.10, 4.11
CIE LCh	77, 11.838, 20.340
Yxy	51.5820, 0.3395, 0.3291
Android (android.graphics.Color)	4292261815 (0xFFD6B7B7)
YUV	192.2690, -4.5696, 19.0581
Hunter-Lab	71.8206, 6.5656, 7.3870

Details

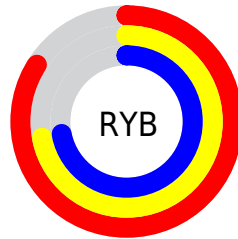
The XYZ color **53.2123, 51.5820, 51.9515** is a light color, and the websafe version is hex **FFCCCC**. A complement of this color would be **55.7123, 63.0142, 72.8455**, and the grayscale version is **50.2796, 52.8980, 57.6059**.

A 20% lighter version of the original color is **87.6865, 89.2250, 94.2619**, and **26.3100, 24.9479, 24.5478** is the 20% darker color. If you saturate the color by 10%, you get **47.0693, 42.5934, 39.7374**, and if you desaturate by 10%, it is **60.3678, 62.0526, 66.1751**.

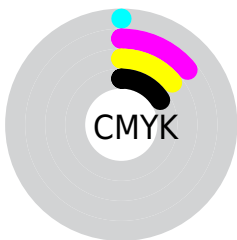
Distribution



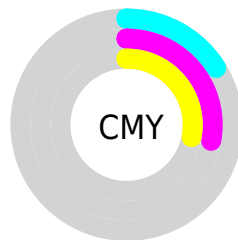
- Red (84%)
- Green (72%)
- Blue (72%)



- Red (84%)
- Yellow (72%)
- Blue (72%)



- Cyan (0%)
- Magenta (14%)
- Yellow (14%)
- Black (16%)





- Cyan (16%)
- Magenta (28%)
- Yellow (28%)

Brightness & Saturation Gradients

These gradients show how the XYZ color 53.2123, 51.5820, 51.9515 changes by changing the brightness by 10 percent. The first figure shows a shift by +10% for each color and the second figure -10%.


Similar to the brightness gradients but the following saturation gradients show a change of the XYZ color 53.2123, 51.5820, 51.9515 by changing the saturation by 10% instead.


 53.2123, 51.5820,
51.9515

 53.2123, 51.5820,
51.9515


389.3466,
392.8208, 411.2010

 38.2004, 36.6720,
36.5844


 94.0804, 92.5145,
94.4856

 26.3162, 24.9536,
24.5926

120.6673,
119.3058, 122.4896

 17.1943, 16.0425,
15.5576


151.8433,
150.8263, 155.5432

 10.4693, 9.5542,
9.0607

187.9737,
187.4604, 194.0646

 5.7758, 5.1044,
4.6834

229.4239,
229.5925, 238.4726

 2.7486, 2.3087,
2.0073

276.5592,

 1.0223, 0.7783,

277.6070, 289.1856

0.5597

329.7450,
331.8883, 346.6222

■ 0.0000, 0.0000,
0.0000

■ 53.2123, 51.5820,
51.9515

■ 53.2123, 51.5820,
51.9515

■ 47.0693, 42.5934,
39.7374

■ 60.3678, 62.0526,
66.1751

■ 41.8891, 35.0133,
29.4392

■ 68.5741, 74.0604,
82.4896

■ 37.6242, 28.7725,
20.9608

■ 77.8727, 87.6666,
100.9759

■ 34.2214, 23.7932,
14.1964

■ 81.5418, 93.0363,
108.2678

■ 31.6220, 19.9894,
9.0293

■ 29.7601, 17.2647,
5.3284

■ 28.5592, 15.5073,
2.9416

■ 27.9263, 14.5811,
1.6840

■ 27.7321, 14.2968,
1.2979

Harmonies

Analogous

The Analogous color harmony consists of three colors that are next to each other on the color wheel.



53.4335, 51.5820, 58.2767



53.2123, 51.5820, 51.9515



51.8510, 51.5820, 47.1242

Triad

The Triadic color harmony groups three colors that are evenly spaced from another and form a triangle on the color wheel.



53.2123, 51.5820, 51.9515



45.7598, 51.5820, 48.5952



48.3021, 51.5820, 69.3369

Complementary

The Complementary color scheme is a pair of colors which are on the opposite of each other on the color wheel.



53.2123, 51.5820, 51.9515



55.7123, 63.0142, 72.8455

Split Complementary

Split-complementary colors differ from the complementary color scheme. The scheme consists of three colors, the original color and two neighbors of the complement color.



46.3077, 51.5820, 66.2918



53.2123, 51.5820, 51.9515



44.8699, 51.5820, 54.1030

Square

The Square scheme is like the rectangle color scheme, but the four colors are evenly spaced on the color wheel.



53.2123, 51.5820, 51.9515



47.5333, 51.5820, 45.2921



45.0674, 51.5820, 60.5983



50.5520, 51.5820, 68.6498

Rectangle

The Rectangle color scheme consists of four colors that form a rectangle on the color wheel.



53.2123, 51.5820, 51.9515



50.5026, 51.5820, 45.2484



45.0674, 51.5820, 60.5983



47.5807, 51.5820, 68.7075

Sweetspot

The Sweet Spot groups the original color and five complimentary colors.



53.2137, 51.5843, 51.9526



90.2832, 93.0250, 99.4234



56.8033, 53.0189, 70.8587



19.1386, 19.6394, 20.9114



0.0000, 0.0000, 0.0000



20.3446, 21.4041, 23.3091

Same Dimension

The Same Dimension uses a secret algorithm to generate beautiful new colors.



53.2137, 51.5843, 51.9526



76.5369, 72.9106, 72.0953



56.5880, 58.3329, 53.0773



12.4234, 12.4211, 12.9034



16.7622, 8.6415, 0.7845



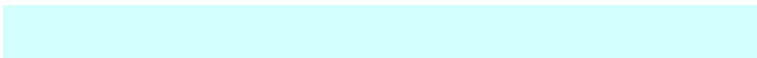
1.0111, 0.5213, 0.0473

Inverse Universe

The Inverse Universe completely reimagines the original color for something new.



55.7123, 63.0142, 72.8455



80.8589, 92.6817, 108.2354



51.9753, 55.5402, 71.5998



12.7921, 14.1076, 15.9863



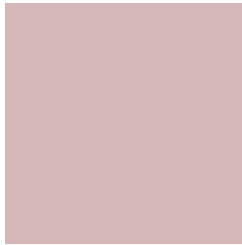
21.8671, 31.9959, 43.4765



1.3190, 1.9299, 2.6223

Previews

White Background



This preview shows how the XYZ color 53.2123, 51.5820, 51.9515 looks on a white background.

Color Contrast Check

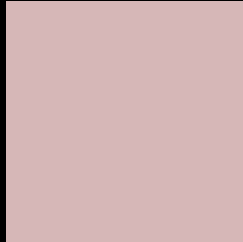
Large Text (above 18pt) WCAG AA × Fail

Any Text WCAG AA × Fail

Large Text (above 18pt) WCAG AAA × Fail

Any Text WCAG AAA × Fail

Black Background



This preview shows how the XYZ color 53.2123, 51.5820, 51.9515 looks on a black background.

Color Contrast Check

Large Text (above 18pt) WCAG AA ✓ Pass

Any Text WCAG AA ✓ Pass

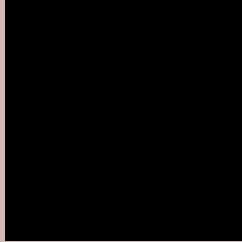
Large Text (above 18pt) WCAG AAA ✓ Pass

Any Text WCAG AAA ✓ Pass

If you want to check with other color combinations, try the [Color Contrast Checker](#).

XYZ 53.2123, 51.5820, 51.9515

Background



This preview shows how black text looks on a background with the XYZ color 53.2123, 51.5820, 51.9515.



This preview shows how white text looks on a background with the XYZ color 53.2123, 51.5820,

Color Blindness Simulation

Color vision deficiency is a very complex topic, and I could not describe the different causes any better than Wikipedia does, so if you want to learn more, you should check out their [article about color blindness](#).

Dichromacy



Original Color

53.2123, 51.5820, 51.9515

Protanopia

49.6729, 51.5852, 54.3526

Deuteranopia

52.8391, 51.6969, 51.9933



Tritanopia

54.6931, 51.5868, 58.7044

Trichromacy



Original Color

53.2123, 51.5820, 51.9515

Protanomaly

50.9904, 51.6424, 53.7349

Deuteranomaly

53.1283, 51.8460, 52.0069

Tritanomaly

54.1563, 51.6646, 56.4081

Monochromacy



Original Color

53.2123, 51.5820, 51.9515

Achromatopsia

50.1023, 52.7115, 57.4028

Achromatomaly

51.2023, 52.3487, 55.5498

CSS Examples

Text

The CSS property to change the color of the text to XYZ 53.2123, 51.5820, 51.9515 is called "color". The color property can be set on classes, ids or directly on the HTML element.

This example shows how text in the color rgb(214, 183, 183) looks like.

```
.text, #text, p{  
    color:rgb(214, 183, 183)  
}
```

If you want to add a text shadow in that color use the text-shadow property, you can generate a text shadow directly with our [CSS Text Shadow Generator](#).

Here you see how black text with a 4 pixel rgb(214, 183, 183) colored shadow looks like.

```
.shadow{ text-shadow: 4px 4px 2px rgb(214, 183, 183) }
```

Border

The CSS property to change the border of an element to XYZ 53.2123, 51.5820, 51.9515 is called "border". The border property can be set on classes, ids or directly on the HTML element.

This example shows the color as border, it can be applied via the CSS property "border" or "border-color".

```
.border, #border, table{ border:4px solid rgb(214, 183, 183) }
```


If only the border color should be changed use the property `border-color`.

```
.border{ border-color:rgb(214, 183, 183) }
```

If you want to add a box shadow in that color use:

Here you see how a box with a 4 pixel `rgb(214, 183, 183)` colored shadow looks like.

```
.boxshadow{ -moz-box-shadow:4px 4px 4px  
4px rgb(214, 183, 183); -webkit-box-  
shadow:4px 4px 4px 4px rgb(214, 183, 183);  
box-shadow:4px 4px 4px 4px rgb(214, 183,  
183) }
```

Background

The CSS property to change the background color of an element to XYZ 53.2123, 51.5820, 51.9515 is called "background". The background property can be set on classes, ids or directly on the HTML element.

```
.background, #background, body{  
background: rgb(214, 183, 183) }
```

If only the background color should be changed can be used:

```
.background{ background-color: rgb(214,  
183, 183) }
```

This example shows the color as background, it is applied via the CSS property "background".

To optimize and compress your CSS code, you can use our [online CSS compressor and optimizer](#) based on csstidy. If you want to create a linear or radial gradient as background or border, check our [CSS Gradient Generator](#).

Hey! You found this booklet interesting? Support Converting Colors with the new Membership Option!

The pro membership hides all ads, plus gives you double the colors in the color bucket, and more awesome pro features!

[Learn more, Memberships starting at \\$2.50/m!](#)

**Follow me
on Twitter!**

@ConvertingColor