

Converting Colors

XYZ(53.4555, 52.0791, 49.1446)

Have a look what the booklet for
XYZ(53.4555, 52.0791, 49.1446)
contains.

XYZ(53.4953, 52.0943, 49.3552)	3
<i>Conversions</i>	4
<i>Details</i>	6
<i>Harmonies</i>	12
<i>Previews</i>	24
<i>Color Blindness Simulation</i>	28
<i>CSS Examples</i>	31

Color

**XYZ(53.4953, 52.0943,
49.3552)**

Conversions

Conversions Part 1

Format	Color
Hex	D8B8B2
RGB	216, 184, 178
RGB Percent	85%, 72%, 70%
CMY	0.1529, 0.2784, 0.3020
CMYK	0.00, 0.15, 0.18, 0.15
HSL	9°, 33%, 77%
HSV	9°, 18%, 85%
XYZ	53.4953, 52.0943, 49.3552
YIQ	192.8840, 20.9980, 4.9180

Conversions

Conversions Part 2

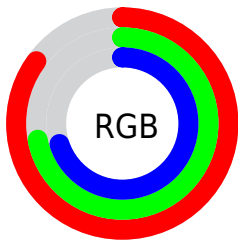
Format	Color
R _Y B	216, 185, 178
Decimal	14203058
CIE Lab	77.34, 10.51, 7.29
CIE LCh	77, 12.789, 34.764
Yxy	52.0943, 0.3453, 0.3362
Android (android.graphics.Color)	4292393138 (0xFFD8B8B2)
YUV	192.8840, -7.3378, 20.2727
Hunter-Lab	72.1764, 5.9910, 9.9802

Details

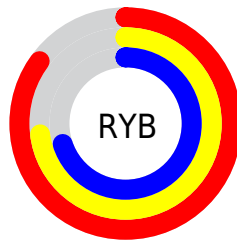
The XYZ color **53.4953, 52.0943, 49.3552** is a light color, and the websafe version is hex **FFCCCC**. A complement of this color would be **53.8010, 60.5146, 73.8111**, and the grayscale version is **50.6547, 53.2927, 58.0358**.

A 20% lighter version of the original color is **87.2514, 89.5207, 90.5225**, and **26.5159, 25.2903, 22.8860** is the 20% darker color. If you saturate the color by 10%, you get **47.9571, 44.2193, 37.6385**, and if you desaturate by 10%, it is **59.8636, 61.0820, 63.0346**.

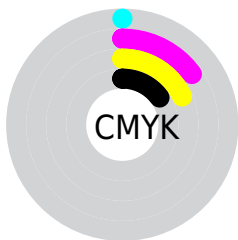
Distribution



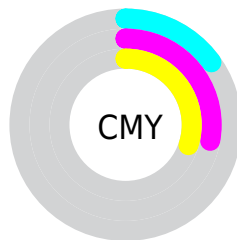
- Red (85%)
- Green (72%)
- Blue (70%)



- Red (85%)
- Yellow (73%)
- Blue (70%)



- Cyan (0%)
- Magenta (15%)
- Yellow (18%)
- Black (15%)





- Cyan (15%)
- Magenta (28%)
- Yellow (30%)

Brightness & Saturation Gradients


These gradients show how the XYZ color 53.4953, 52.0943, 49.3552 changes by changing the brightness by 10 percent. The first figure shows a shift by +10% for each color and the second figure -10%.


Similar to the brightness gradients but the following saturation gradients show a change of the XYZ color 53.4953, 52.0943, 49.3552 by changing the saturation by 10% instead.


 53.4953, 52.0943,
49.3552

 53.4953, 52.0943,
49.3552


390.4123,
394.8005, 400.8016

 38.4274, 37.0802,
34.5337


 94.4940, 93.2703,
90.6052

 26.4933, 25.2696,
23.0233


121.1556,
120.2010, 117.8709

 17.3276, 16.2781,
14.4052


152.4123,
151.8728, 150.1216

 10.5651, 9.7211,
8.2611

188.6297,
188.6699, 187.7761

 5.8403, 5.2144,
4.1723

230.1730,
230.9769, 231.2528

 2.7880, 2.3736,
1.7203

277.4077,

 1.0427, 0.8123,

279.1781, 280.9702

0.3746

330.6990,
333.6578, 337.3470

■ 0.0000, 0.0000,
0.0000

■ 53.4953, 52.0943,
49.3552

■ 53.4953, 52.0943,
49.3552

■ 47.9571, 44.2193,
37.6385

■ 59.8636, 61.0820,
63.0346

■ 43.2104, 37.4069,
27.7912

■ 67.0901, 71.2162,
78.7576

■ 39.2199, 31.6135,
19.7171

■ 75.2067, 82.5379,
96.6046

■ 35.9459, 26.7897,
13.3104

■ 82.1291, 93.3390,
108.2953

■ 33.3451, 22.8821,
8.4537

■ 31.3690, 19.8319,
5.0145

■ 29.9627, 17.5734,
2.8377

■ 29.0570, 16.0293,
1.7118

■ 28.8948, 15.7504,
1.5172

Harmonies

Analogous

The Analogous color harmony consists of three colors that are next to each other on the color wheel.



54.3703, 52.0943, 55.6062



53.4953, 52.0943, 49.3552



51.5546, 52.0943, 45.3477

Triad

The Triadic color harmony groups three colors that are evenly spaced from another and form a triangle on the color wheel.



53.4953, 52.0943, 49.3552



45.3645, 52.0943, 51.1494



49.9072, 52.0943, 71.2936

Complementary

The Complementary color scheme is a pair of colors which are on the opposite of each other on the color wheel.



53.4953, 52.0943, 49.3552



53.8010, 60.5146, 73.8111

Split Complementary

Split-complementary colors differ from the complementary color scheme. The scheme consists of three colors, the original color and two neighbors of the complement color.



47.5281, 52.0943, 69.8546



53.4953, 52.0943, 49.3552



44.9560, 52.0943, 57.8523

Square

The Square scheme is like the rectangle color scheme, but the four colors are evenly spaced on the color wheel.



53.4953, 52.0943, 49.3552



46.8702, 52.0943, 46.3220



45.7354, 52.0943, 64.7873



52.2555, 52.0943, 68.5722

Rectangle

The Rectangle color scheme consists of four colors that form a rectangle on the color wheel.



53.4953, 52.0943, 49.3552



49.9462, 52.0943, 44.2928



45.7354, 52.0943, 64.7873



49.0844, 52.0943, 71.2823

Sweetspot

The Sweet Spot groups the original color and five complimentary colors.



53.4967, 52.0966, 49.3563



89.7349, 92.5465, 97.3351



55.9101, 51.1085, 68.0876



19.0526, 19.5920, 20.4991



0.0000, 0.0000, 0.0000



20.3446, 21.4041, 23.3091

Same Dimension

The Same Dimension uses a secret algorithm to generate beautiful new colors.



53.4967, 52.0966, 49.3563



74.8603, 71.5475, 65.4008



57.6405, 60.3842, 50.7375



12.5801, 12.7345, 12.9557



17.1537, 9.4247, 0.9150



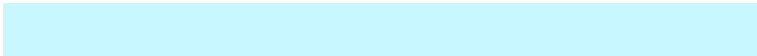
1.0853, 0.6699, 0.0721

Inverse Universe

The Inverse Universe completely reimagines the original color for something new.



53.8010, 60.5146, 73.8111



75.3785, 85.9399, 107.2229



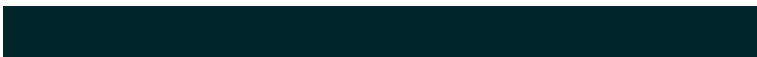
49.4517, 51.8161, 72.3613



12.6173, 13.7581, 15.9281



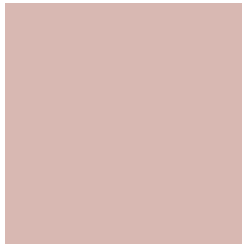
17.2878, 22.8373, 41.9500



1.0886, 1.4693, 2.5455

Previews

White Background



This preview shows how the XYZ color 53.4953, 52.0943, 49.3552 looks on a white background.

Color Contrast Check

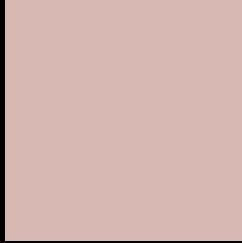
Large Text (above 18pt) WCAG AA × Fail

Any Text WCAG AA × Fail

Large Text (above 18pt) WCAG AAA × Fail

Any Text WCAG AAA × Fail

Black Background



This preview shows how the XYZ color 53.4953, 52.0943, 49.3552 looks on a black background.

Color Contrast Check

Large Text (above 18pt) WCAG AA ✓ Pass

Any Text WCAG AA ✓ Pass

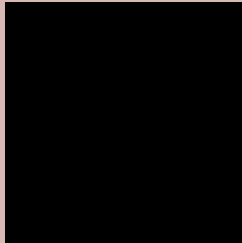
Large Text (above 18pt) WCAG AAA ✓ Pass

Any Text WCAG AAA ✓ Pass

If you want to check with other color combinations, try the [Color Contrast Checker](#).

XYZ 53.4953, 52.0943, 49.3552

Background



This preview shows how black text looks on a background with the XYZ color 53.4953, 52.0943, 49.3552.



This preview shows how white text looks on a background with the XYZ color 53.4953, 52.0943,

49.3552.

Color Blindness Simulation

Color vision deficiency is a very complex topic, and I could not describe the different causes any better than Wikipedia does, so if you want to learn more, you should check out their [article about color blindness](#).

Dichromacy



Original Color

53.4953, 52.0943, 49.3552

Protanopia

49.7799, 52.0334, 51.1358

Deuteranopia

53.4092, 52.3593, 49.4109



Tritanopia

55.2876, 51.8933, 58.7322

Trichromacy



Original Color

53.4953, 52.0943, 49.3552

Protanomaly

51.1233, 52.0991, 50.5417

Deuteranomaly

53.4092, 52.3593, 49.4109

Tritanomaly

54.5285, 51.8817, 55.2843

Monochromacy



Original Color

53.4953, 52.0943, 49.3552

Achromatopsia

50.6879, 53.3276, 58.0738

Achromatomaly

51.5780, 52.8753, 55.0644

CSS Examples

Text

The CSS property to change the color of the text to XYZ 53.4953, 52.0943, 49.3552 is called "color". The color property can be set on classes, ids or directly on the HTML element.

This example shows how text in the color `rgb(216, 184, 178)` looks like.

```
.text, #text, p{  
    color:rgb(216, 184, 178)  
}
```

If you want to add a text shadow in that color use the text-shadow property, you can generate a text shadow directly with our [CSS Text Shadow Generator](#).

Here you see how black text with a 4 pixel rgb(216, 184, 178) colored shadow looks like.

```
.shadow{ text-shadow: 4px 4px 2px rgb(216, 184, 178) }
```

Border

The CSS property to change the border of an element to XYZ 53.4953, 52.0943, 49.3552 is called "border". The border property can be set on classes, ids or directly on the HTML element.

This example shows the color as border, it can be applied via the CSS property "border" or "border-color".

```
.border, #border, table{ border:4px solid rgb(216, 184, 178) }
```


If only the border color should be changed use the property `border-color`.

```
.border{ border-color:rgb(216, 184, 178) }
```

If you want to add a box shadow in that color use:

Here you see how a box with a 4 pixel `rgb(216, 184, 178)` colored shadow looks like.

```
.boxshadow{ -moz-box-shadow:4px 4px 4px  
4px rgb(216, 184, 178); -webkit-box-  
shadow:4px 4px 4px 4px rgb(216, 184, 178);  
box-shadow:4px 4px 4px 4px rgb(216, 184,  
178) }
```

Background

The CSS property to change the background color of an element to XYZ 53.4953, 52.0943, 49.3552 is called "background". The background property can be set on classes, ids or directly on the HTML element.

```
.background, #background, body{  
background: rgb(216, 184, 178) }
```

If only the background color should be changed can be used:

```
.background{ background-color: rgb(216,  
184, 178) }
```

This example shows the color as background, it is applied via the CSS property "background".

To optimize and compress your CSS code, you can use our [online CSS compressor and optimizer](#) based on csstidy. If you want to create a linear or radial gradient as background or border, check our [CSS Gradient Generator](#).

Hey! You found this booklet interesting? Support Converting Colors with the new Membership Option!

The pro membership hides all ads, plus gives you double the colors in the color bucket, and more awesome pro features!

[Learn more, Memberships starting at \\$2.50/m!](#)

**Follow me
on Twitter!**

@ConvertingColor