

Converting Colors

XYZ(53.5008, 52.9332, 53.8601)

Have a look what the booklet for
XYZ(53.5008, 52.9332, 53.8601)
contains.

XYZ(53.4972, 52.9347, 53.8522)	3
<i>Conversions</i>	4
<i>Details</i>	6
<i>Harmonies</i>	12
<i>Previews</i>	24
<i>Color Blindness Simulation</i>	28
<i>CSS Examples</i>	31

Color

**XYZ(53.4972, 52.9347,
53.8522)**

Conversions

Conversions Part 1

Format	Color
Hex	D3BBBA
RGB	211, 187, 186
RGB Percent	83%, 73%, 73%
CMY	0.1725, 0.2666, 0.2706
CMYK	0.00, 0.11, 0.12, 0.17
HSL	2°, 22%, 78%
HSV	2°, 12%, 83%
XYZ	53.4972, 52.9347, 53.8522
YIQ	194.0620, 14.6250, 4.7770

Conversions

Conversions Part 2

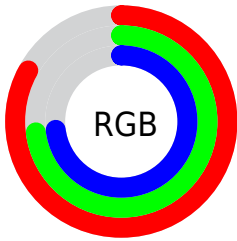
Format	Color
R _Y B	211, 187, 186
Decimal	13876154
CIE Lab	77.84, 8.36, 3.62
CIE LCh	78, 9.110, 23.425
Yxy	52.9347, 0.3338, 0.3303
Android (android.graphics.Color)	4292066234 (0xFFD3BBBA)
YUV	194.0620, -3.9746, 14.8546
Hunter-Lab	72.7562, 3.9265, 7.0445

Details

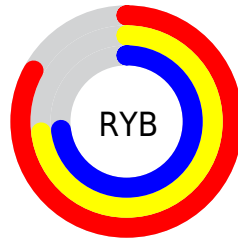
The XYZ color **53.4972, 52.9347, 53.8522** is a light color, and the websafe version is hex **CCCCCC**. A complement of this color would be **55.0539, 61.2342, 70.5463**, and the grayscale version is **51.3328, 54.0061, 58.8126**.

A 20% lighter version of the original color is **89.3176, 91.7720, 97.0106**, and **26.4690, 25.8116, 25.7774** is the 20% darker color. If you saturate the color by 10%, you get **47.4201, 44.1088, 41.5648**, and if you desaturate by 10%, it is **60.5145, 63.1097, 68.0885**.

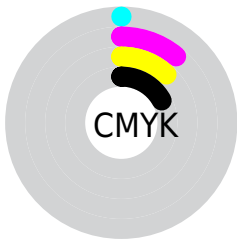
Distribution



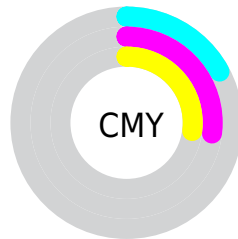
- Red (83%)
- Green (73%)
- Blue (73%)



- Red (83%)
- Yellow (73%)
- Blue (73%)



- Cyan (0%)
- Magenta (11%)
- Yellow (12%)
- Black (17%)





- Cyan (17%)
- Magenta (27%)
- Yellow (27%)

Brightness & Saturation Gradients


These gradients show how the XYZ color 53.4972, 52.9347, 53.8522 changes by changing the brightness by 10 percent. The first figure shows a shift by +10% for each color and the second figure -10%.


Similar to the brightness gradients but the following saturation gradients show a change of the XYZ color 53.4972, 52.9347, 53.8522 by changing the saturation by 10% instead.


 53.4972, 52.9347,
53.8522

 53.4972, 52.9347,
53.8522


390.4195,
398.0345, 418.7048

 38.4289, 37.7506,
38.0911


 94.4968, 94.5083,
97.3114

 26.4945, 25.7892,
25.7511


121.1588,
121.6666, 125.8466

 17.3285, 16.6660,
16.4134


152.4162,
153.5851, 159.4770

 10.5658, 9.9967,
9.6596

188.6341,
190.6482, 198.6211

 5.8408, 5.3967,
5.0712

230.1781,
233.2403, 243.6973

 2.7882, 2.4819,
2.2297

277.4134,

 1.0428, 0.8675,

281.7458, 295.1243

0.6914

330.7054,
336.5491, 353.3207

■ 0.0000, 0.0000,
0.0000

■ 53.4972, 52.9347,
53.8522

■ 53.4972, 52.9347,
53.8522

■ 47.4201, 44.1088,
41.5648

■ 60.5145, 63.1097,
68.0885

■ 42.2391, 36.5686,
31.1382

■ 68.5048, 74.6797,
84.3496

■ 37.9131, 30.2564,
22.4828

■ 77.5050, 87.6970,
102.7116

■ 34.3961, 25.1072,
15.5002

■ 80.6742, 92.5890,
108.2272

■ 31.6379, 21.0499,
10.0824

■ 29.5825, 18.0058,
6.1087

■ 28.1663, 15.8856,
3.4410

■ 27.3142, 14.5846,
1.9141

■ 26.9561, 14.0329,
1.2879

Harmonies

Analogous

The Analogous color harmony consists of three colors that are next to each other on the color wheel.



53.7663, 52.9347, 58.7589



53.4972, 52.9347, 53.8522



52.3659, 52.9347, 50.1661

Triad

The Triadic color harmony groups three colors that are evenly spaced from another and form a triangle on the color wheel.



53.4972, 52.9347, 53.8522



47.6317, 52.9347, 52.0278



49.9246, 52.9347, 67.8603

Complementary

The Complementary color scheme is a pair of colors which are on the opposite of each other on the color wheel.



53.4972, 52.9347, 53.8522



55.0539, 61.2342, 70.5463

Split Complementary

Split-complementary colors differ from the complementary color scheme. The scheme consists of three colors, the original color and two neighbors of the complement color.



48.3142, 52.9347, 65.8148



53.4972, 52.9347, 53.8522



47.0106, 52.9347, 56.5293

Square

The Square scheme is like the rectangle color scheme, but the four colors are evenly spaced on the color wheel.



53.4972, 52.9347, 53.8522



48.9734, 52.9347, 49.1567



47.2574, 52.9347, 61.5949



51.6765, 52.9347, 67.0403

Rectangle

The Rectangle color scheme consists of four colors that form a rectangle on the color wheel.



53.4972, 52.9347, 53.8522



51.2889, 52.9347, 48.7997



47.2574, 52.9347, 61.5949



49.3493, 52.9347, 67.4813

Sweetspot

The Sweet Spot groups the original color and five complimentary colors.



53.4987, 52.9370, 53.8533



90.4067, 93.2720, 99.4646



56.0771, 53.6289, 68.4780



19.1697, 19.7016, 20.9218



0.0000, 0.0000, 0.0000



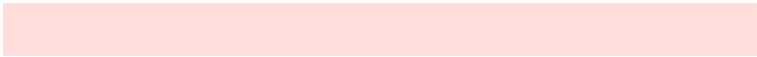
20.3446, 21.4041, 23.3091

Same Dimension

The Same Dimension uses a secret algorithm to generate beautiful new colors.



53.4987, 52.9370, 53.8533



79.8518, 77.9625, 78.0647



56.2277, 58.3951, 54.7630



11.8463, 11.8832, 12.2814



16.2857, 8.5045, 0.7832



0.9243, 0.5029, 0.0484

Inverse Universe

The Inverse Universe completely reimagines the original color for something new.



55.0539, 61.2342, 70.5463



82.6582, 92.9355, 108.1895



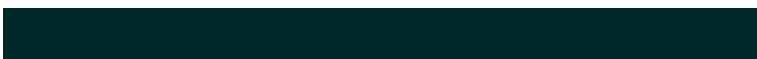
52.1262, 55.3789, 69.5704



12.1160, 13.3223, 15.1765



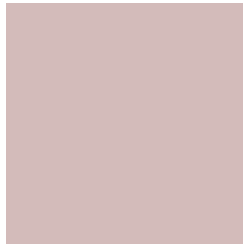
19.9358, 28.5181, 41.6463



1.1276, 1.6204, 2.3329

Previews

White Background



This preview shows how the XYZ color 53.4972, 52.9347, 53.8522 looks on a white background.

Color Contrast Check

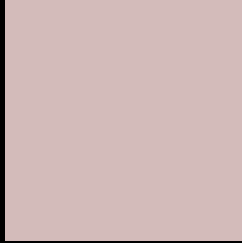
Large Text (above 18pt) WCAG AA × Fail

Any Text WCAG AA × Fail

Large Text (above 18pt) WCAG AAA × Fail

Any Text WCAG AAA × Fail

Black Background



This preview shows how the XYZ color 53.4972, 52.9347, 53.8522 looks on a black background.

Color Contrast Check

Large Text (above 18pt) WCAG AA ✓ Pass

Any Text WCAG AA ✓ Pass

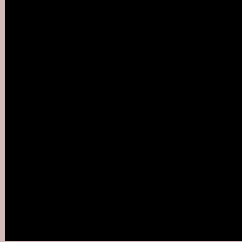
Large Text (above 18pt) WCAG AAA ✓ Pass

Any Text WCAG AAA ✓ Pass

If you want to check with other color combinations, try the [Color Contrast Checker](#).

XYZ 53.4972, 52.9347, 53.8522

Background



This preview shows how black text looks on a background with the XYZ color 53.4972, 52.9347, 53.8522.



This preview shows how white text looks on a background with the XYZ color 53.4972, 52.9347,

Color Blindness Simulation

Color vision deficiency is a very complex topic, and I could not describe the different causes any better than Wikipedia does, so if you want to learn more, you should check out their [article about color blindness](#).

Dichromacy



Original Color

53.4972, 52.9347, 53.8522

Protanopia

51.0609, 53.2437, 55.7300

Deuteranopia

53.8624, 52.8091, 53.8087



Tritanopia

55.0983, 52.9676, 61.3526

Trichromacy



Original Color

53.4972, 52.9347, 53.8522

Protanomaly

51.8477, 53.0143, 55.0771

Deuteranomaly

53.5732, 52.6600, 53.7952

Tritanomaly

54.4479, 53.0099, 58.4012

Monochromacy



Original Color

53.4972, 52.9347, 53.8522

Achromatopsia

51.2775, 53.9479, 58.7493

Achromatomaly

51.8542, 53.3026, 56.8456

CSS Examples

Text

The CSS property to change the color of the text to XYZ 53.4972, 52.9347, 53.8522 is called "color". The color property can be set on classes, ids or directly on the HTML element.

This example shows how text in the color rgb(211, 187, 186) looks like.

```
.text, #text, p{  
    color:rgb(211, 187, 186)  
}
```

If you want to add a text shadow in that color use the text-shadow property, you can generate a text shadow directly with our [CSS Text Shadow Generator](#).

Here you see how black text with a 4 pixel rgb(211, 187, 186) colored shadow looks like.

```
.shadow{ text-shadow: 4px 4px 2px rgb(211, 187, 186) }
```

Border

The CSS property to change the border of an element to XYZ 53.4972, 52.9347, 53.8522 is called "border". The border property can be set on classes, ids or directly on the HTML element.

This example shows the color as border, it can be applied via the CSS property "border" or "border-color".

```
.border, #border, table{ border:4px solid rgb(211, 187, 186) }
```


If only the border color should be changed use the property border-color.

```
.border{ border-color:rgb(211, 187, 186) }
```

If you want to add a box shadow in that color use:

Here you see how a box with a 4 pixel rgb(211, 187, 186) colored shadow looks like.

```
.boxshadow{ -moz-box-shadow:4px 4px 4px  
4px rgb(211, 187, 186); -webkit-box-  
shadow:4px 4px 4px 4px rgb(211, 187, 186);  
box-shadow:4px 4px 4px 4px rgb(211, 187,  
186) }
```

Background

The CSS property to change the background color of an element to XYZ 53.4972, 52.9347, 53.8522 is called "background". The background property can be set on classes, ids or directly on the HTML element.

```
.background, #background, body{  
background: rgb(211, 187, 186) }
```

If only the background color should be changed can be used:

```
.background{ background-color: rgb(211,  
187, 186) }
```

This example shows the color as background, it is applied via the CSS property "background".

To optimize and compress your CSS code, you can use our [online CSS compressor and optimizer](#) based on csstidy. If you want to create a linear or radial gradient as background or border, check our [CSS Gradient Generator](#).

Hey! You found this booklet interesting? Support Converting Colors with the new Membership Option!

The pro membership hides all ads, plus gives you double the colors in the color bucket, and more awesome pro features!

[Learn more, Memberships starting at \\$2.50/m!](#)

**Follow me
on Twitter!**

@ConvertingColor