

Converting Colors

XYZ(53.5207, 54.8978, 46.3103)

Have a look what the booklet for
XYZ(53.5207, 54.8978, 46.3103)
contains.

XYZ(53.5720, 55.0773, 46.3355)	3
<i>Conversions</i>	4
<i>Details</i>	6
<i>Harmonies</i>	12
<i>Previews</i>	24
<i>Color Blindness Simulation</i>	28
<i>CSS Examples</i>	31

Color

**XYZ(53.5720, 55.0773,
46.3355)**

Conversions

Conversions Part 1

Format	Color
Hex	D4C1AB
RGB	212, 193, 171
RGB Percent	83%, 76%, 67%
CMY	0.1686, 0.2431, 0.3294
CMYK	0.00, 0.09, 0.19, 0.17
HSL	32°, 32%, 75%
HSV	32°, 19%, 83%
XYZ	53.5720, 55.0773, 46.3355
YIQ	196.1730, 18.3860, -2.8140

Conversions

Conversions Part 2

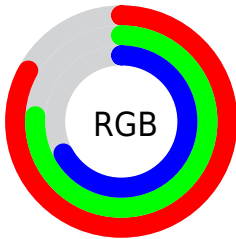
Format	Color
R _Y B	206, 212, 171
Decimal	13943211
CIE Lab	79.09, 3.17, 13.51
CIE LCh	79, 13.873, 76.806
Yxy	55.0773, 0.3457, 0.3554
Android (android.graphics.Color)	4292133291 (0xFFD4C1AB)
YUV	196.1730, -12.4103, 13.8803
Hunter-Lab	74.2141, -1.0231, 14.9322

Details

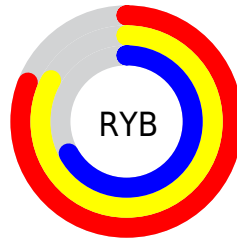
The XYZ color **53.5720, 55.0773, 46.3355** is a light color, and the websafe version is hex **CCCCCC**. A complement of this color would be **47.0913, 50.2369, 69.5023**, and the grayscale version is **52.6388, 55.3801, 60.3090**.

A 20% lighter version of the original color is **88.8431, 94.5024, 85.5097**, and **26.6125, 27.2562, 21.3111** is the 20% darker color. If you saturate the color by 10%, you get **49.6119, 50.1354, 35.8327**, and if you desaturate by 10%, it is **58.0035, 60.4422, 58.5957**.

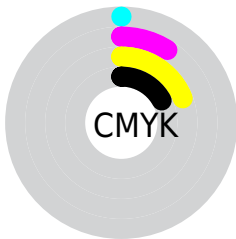
Distribution



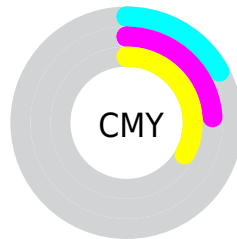
- Red (83%)
- Green (76%)
- Blue (67%)



- Red (81%)
- Yellow (83%)
- Blue (67%)



- Cyan (0%)
- Magenta (9%)
- Yellow (19%)
- Black (17%)



- Cyan (17%)
- Magenta (24%)
- Yellow (33%)

Brightness & Saturation Gradients

These gradients show how the XYZ color 53.5720, 55.0773, 46.3355 changes by changing the brightness by 10 percent. The first figure shows a shift by +10% for each color and the second figure -10%.

Similar to the brightness gradients but the following saturation gradients show a change of the XYZ color 53.5720, 55.0773, 46.3355 by changing the saturation by 10% instead.

■ 53.5720, 55.0773,
46.3355

■ 53.5720, 55.0773,
46.3355

390.7008,
406.2049, 388.4725

■ 38.4889, 39.4636,
32.1601

■ 94.6061, 97.6542,
86.0604

■ 26.5413, 27.1206,
21.2180

121.2878,
125.3862, 112.4470

■ 17.3638, 17.6638,
13.0906

152.5665,
157.9264, 143.7411

■ 10.5911, 10.7089,
7.3595

188.8074,
195.6593, 180.3612

■ 5.8579, 5.8714,
3.6061

230.3759,
238.9692, 222.7259

■ 2.7987, 2.7671,
1.4118

277.6374,

■ 1.0482, 1.0114,

288.2405, 271.2536

0.1509

330.9573,
343.8576, 326.3630

■ 0.0000, 0.0000,
0.0000

■ 53.5720, 55.0773,
46.3355

■ 53.5720, 55.0773,
46.3355

■ 49.6119, 50.1354,
35.8327

■ 58.0035, 60.4422,
58.5957

■ 46.1004, 45.5974,
27.0017

■ 62.9190, 66.2340,
72.6866

■ 43.0197, 41.4534,
19.7548

■ 68.3361, 72.4657,
88.6814

■ 40.3483, 37.6902,
13.9951

■ 74.1408, 79.0958,
105.9671

■ 38.0630, 34.2936,
9.6144

■ 76.9880, 84.7902,
106.9162

■ 36.1376, 31.2479,
6.4901

■ 79.9923, 90.7988,
107.9176

■ 34.5413, 28.5357,
4.4772

■ 80.9615, 92.7371,
108.2407

■ 33.2250, 26.1318,
3.3330

■ 33.1440, 25.9821,
3.2682

Harmonies

Analogous

The Analogous color harmony consists of three colors that are next to each other on the color wheel.



56.0727, 55.0773, 49.5417



53.5720, 55.0773, 46.3355



50.8274, 55.0773, 46.5450

Triad

The Triadic color harmony groups three colors that are evenly spaced from another and form a triangle on the color wheel.



53.5720, 55.0773, 46.3355



47.4238, 55.0773, 64.4801



56.3211, 55.0773, 71.0052

Complementary

The Complementary color scheme is a pair of colors which are on the opposite of each other on the color wheel.



53.5720, 55.0773, 46.3355



47.0913, 50.2369, 69.5023

Split Complementary

Split-complementary colors differ from the complementary color scheme. The scheme consists of three colors, the original color and two neighbors of the complement color.



53.9014, 55.0773, 75.7557



53.5720, 55.0773, 46.3355



48.7945, 55.0773, 71.7673

Square

The Square scheme is like the rectangle color scheme, but the four colors are evenly spaced on the color wheel.



53.5720, 55.0773, 46.3355



47.3426, 55.0773, 56.5617



51.1454, 55.0773, 76.0463



57.6971, 55.0773, 63.5121

Rectangle

The Rectangle color scheme consists of four colors that form a rectangle on the color wheel.



53.5720, 55.0773, 46.3355



49.2288, 55.0773, 48.5879



51.1454, 55.0773, 76.0463



55.5990, 55.0773, 73.0034

Sweetspot

The Sweet Spot groups the original color and five complimentary colors.



53.5735, 55.0798, 46.3367



90.4638, 94.6138, 95.6989



51.0236, 46.8471, 55.1453



19.2597, 20.1289, 20.1894



0.0000, 0.0000, 0.0000



20.3446, 21.4041, 23.3091

Same Dimension

The Same Dimension uses a secret algorithm to generate beautiful new colors.



53.5735, 55.0798, 46.3367



78.9396, 80.6533, 63.8407



57.6535, 63.8223, 47.8091



12.9697, 13.5136, 13.0855



20.5627, 16.2426, 2.0514



1.3227, 1.1446, 0.1512

Inverse Universe

The Inverse Universe completely reimagines the original color for something new.



47.0913, 50.2369, 69.5023



67.4337, 72.0579, 104.9622



43.5411, 42.6922, 68.2331



12.2120, 12.9475, 15.7930



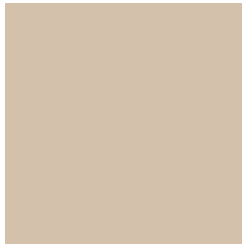
10.1436, 8.5490, 39.5686



0.6941, 0.6803, 2.4140

Previews

White Background



This preview shows how the XYZ color 53.5720, 55.0773, 46.3355 looks on a white background.

Color Contrast Check

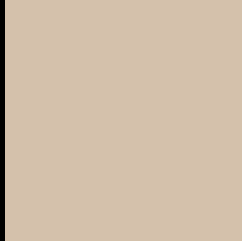
Large Text (above 18pt) WCAG AA × Fail

Any Text WCAG AA × Fail

Large Text (above 18pt) WCAG AAA × Fail

Any Text WCAG AAA × Fail

Black Background



This preview shows how the XYZ color 53.5720, 55.0773, 46.3355 looks on a black background.

Color Contrast Check

Large Text (above 18pt) WCAG AA ✓ Pass

Any Text WCAG AA ✓ Pass

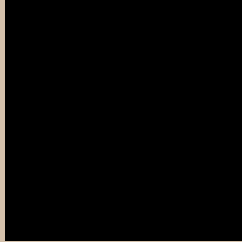
Large Text (above 18pt) WCAG AAA ✓ Pass

Any Text WCAG AAA ✓ Pass

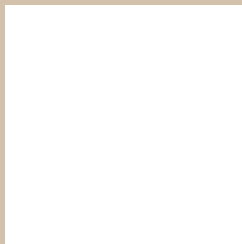
If you want to check with other color combinations, try the [Color Contrast Checker](#).

XYZ 53.5720, 55.0773, 46.3355

Background



This preview shows how black text looks on a background with the XYZ color 53.5720, 55.0773, 46.3355.



This preview shows how white text looks on a background with the XYZ color 53.5720, 55.0773,

Color Blindness Simulation

Color vision deficiency is a very complex topic, and I could not describe the different causes any better than Wikipedia does, so if you want to learn more, you should check out their [article about color blindness](#).

Dichromacy



Original Color

53.5720, 55.0773, 46.3355

Protanopia

52.1383, 54.9879, 46.8955

Deuteranopia

56.3845, 55.2210, 46.7167



Tritanopia

57.0816, 54.8772, 64.0837

Trichromacy



Original Color

53.5720, 55.0773, 46.3355

Protanomaly

52.7506, 54.9720, 46.8601

Deuteranomaly

55.3750, 55.0211, 46.7313

Tritanomaly

55.8418, 55.0356, 56.9700

Monochromacy



Original Color

53.5720, 55.0773, 46.3355

Achromatopsia

52.4687, 55.2011, 60.1140

Achromatomaly

52.8419, 55.1746, 54.8784

CSS Examples

Text

The CSS property to change the color of the text to XYZ 53.5720, 55.0773, 46.3355 is called "color". The color property can be set on classes, ids or directly on the HTML element.

This example shows how text in the color rgb(212, 193, 171) looks like.

```
.text, #text, p{  
    color:rgb(212, 193, 171)  
}
```

If you want to add a text shadow in that color use the text-shadow property, you can generate a text shadow directly with our [CSS Text Shadow Generator](#).

Here you see how black text with a 4 pixel rgb(212, 193, 171) colored shadow looks like.

```
.shadow{ text-shadow: 4px 4px 2px rgb(212, 193, 171) }
```

Border

The CSS property to change the border of an element to XYZ 53.5720, 55.0773, 46.3355 is called "border". The border property can be set on classes, ids or directly on the HTML element.

This example shows the color as border, it can be applied via the CSS property "border" or "border-color".

```
.border, #border, table{ border:4px solid rgb(212, 193, 171) }
```


If only the border color should be changed use the property border-color.

```
.border{ border-color:rgb(212, 193, 171) }
```

If you want to add a box shadow in that color use:

Here you see how a box with a 4 pixel rgb(212, 193, 171) colored shadow looks like.

```
.boxshadow{ -moz-box-shadow:4px 4px 4px  
4px rgb(212, 193, 171); -webkit-box-  
shadow:4px 4px 4px 4px rgb(212, 193, 171);  
box-shadow:4px 4px 4px 4px rgb(212, 193,  
171) }
```

Background

The CSS property to change the background color of an element to XYZ 53.5720, 55.0773, 46.3355 is called "background". The background property can be set on classes, ids or directly on the HTML element.

```
.background, #background, body{  
background: rgb(212, 193, 171) }
```

If only the background color should be changed can be used:

```
.background{ background-color: rgb(212,  
193, 171) }
```

This example shows the color as background, it is applied via the CSS property "background".

To optimize and compress your CSS code, you can use our [online CSS compressor and optimizer](#) based on csstidy. If you want to create a linear or radial gradient as background or border, check our [CSS Gradient Generator](#).

Hey! You found this booklet interesting? Support Converting Colors with the new Membership Option!

The pro membership hides all ads, plus gives you double the colors in the color bucket, and more awesome pro features!

[Learn more, Memberships starting at \\$2.50/m!](#)

**Follow me
on Twitter!**

@ConvertingColor