

Converting Colors

XYZ(53.5528, 53.2835, 53.3863)

Have a look what the booklet for
XYZ(53.5528, 53.2835, 53.3863)
contains.

XYZ(53.6041, 53.3181, 53.3651)	3
<i>Conversions</i>	4
<i>Details</i>	6
<i>Harmonies</i>	12
<i>Previews</i>	24
<i>Color Blindness Simulation</i>	28
<i>CSS Examples</i>	31

Color

**XYZ(53.6041, 53.3181,
53.3651)**

Conversions

Conversions Part 1

Format	Color
Hex	D3BCB9
RGB	211, 188, 185
RGB Percent	83%, 74%, 73%
CMY	0.1725, 0.2627, 0.2745
CMYK	0.00, 0.11, 0.12, 0.17
HSL	7°, 23%, 78%
HSV	7°, 12%, 83%
XYZ	53.6041, 53.3181, 53.3651
YIQ	194.5350, 14.6710, 3.9430

Conversions

Conversions Part 2

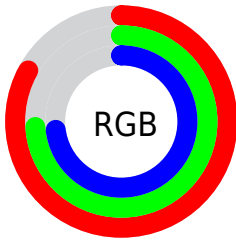
Format	Color
R _Y B	211, 188, 185
Decimal	13876409
CIE Lab	78.06, 7.66, 4.49
CIE LCh	78, 8.879, 30.376
Yxy	53.3181, 0.3344, 0.3326
Android (android.graphics.Color)	4292066489 (0xFFD3BCB9)
YUV	194.5350, -4.7008, 14.4398
Hunter-Lab	73.0192, 3.2548, 7.7822

Details

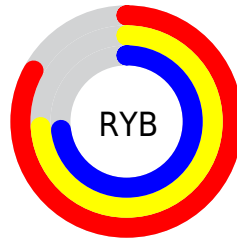
The XYZ color **53.6041, 53.3181, 53.3651** is a light color, and the websafe version is hex **CCCCCC**. A complement of this color would be **54.3210, 60.1278, 70.3713**, and the grayscale version is **51.6174, 54.3055, 59.1387**.

A 20% lighter version of the original color is **89.4679, 92.3122, 96.3217**, and **26.5391, 26.0618, 25.4615** is the 20% darker color. If you saturate the color by 10%, you get **47.8079, 45.0294, 41.2470**, and if you desaturate by 10%, it is **60.2494, 62.7748, 67.3984**.

Distribution



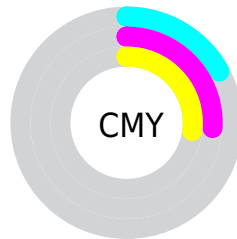
- Red (83%)
- Green (74%)
- Blue (73%)



- Red (83%)
- Yellow (74%)
- Blue (73%)



- Cyan (0%)
- Magenta (11%)
- Yellow (12%)
- Black (17%)





- Cyan (17%)
- Magenta (26%)
- Yellow (27%)

Brightness & Saturation Gradients


These gradients show how the XYZ color 53.6041, 53.3181, 53.3651 changes by changing the brightness by 10 percent. The first figure shows a shift by +10% for each color and the second figure -10%.

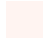
Similar to the brightness gradients but the following saturation gradients show a change of the XYZ color 53.6041, 53.3181, 53.3651 by changing the saturation by 10% instead.


 53.6041, 53.3181,
53.3651

 53.6041, 53.3181,
53.3651


390.8215,
399.5043, 416.7903

 38.5146, 38.0568,
37.7046


 94.6530, 95.0723,
96.5884

 26.5614, 26.0268,
25.4534


121.3432,
122.3339, 124.9882

 17.3790, 16.8437,
16.1931


152.6310,
154.3645, 158.4716

 10.6020, 10.1231,
9.5051

188.8817,
191.5483, 197.4570

 5.8652, 5.4806,
4.9708

230.4608,
234.2698, 242.3631

 2.8032, 2.5319,
2.1717

277.7336,

 1.0505, 0.8926,

282.9134, 293.6083

0.6580

331.0654,
337.8634, 351.6111

0.0000, 0.0000,
0.0000

53.6041, 53.3181,
53.3651

53.6041, 53.3181,
53.3651

47.8079, 45.0294,
41.2470

60.2494, 62.7748,
67.3984

42.8223, 37.8567,
30.9578

67.7715, 73.4350,
83.4213

38.6123, 31.7542,
22.4095

76.2025, 85.3415,
101.5087

35.1386, 26.6706,
15.5056

80.6742, 92.5890,
108.2272

32.3584, 22.5502,
10.1403

■ 30.2247, 19.3318,
6.1951

■ 28.6843, 16.9474,
3.5345

■ 27.6751, 15.3189,
1.9963

■ 27.1986, 14.5179,
1.3687

Harmonies

Analogous

The Analogous color harmony consists of three colors that are next to each other on the color wheel.



54.0799, 53.3181, 57.9918



53.6041, 53.3181, 53.3651



52.3408, 53.3181, 50.1541

Triad

The Triadic color harmony groups three colors that are evenly spaced from another and form a triangle on the color wheel.



53.6041, 53.3181, 53.3651



47.8379, 53.3181, 53.4677



50.6991, 53.3181, 68.1204

Complementary

The Complementary color scheme is a pair of colors which are on the opposite of each other on the color wheel.



53.6041, 53.3181, 53.3651



54.3210, 60.1278, 70.3713

Split Complementary

Split-complementary colors differ from the complementary color scheme. The scheme consists of three colors, the original color and two neighbors of the complement color.



49.0493, 53.3181, 66.7435



53.6041, 53.3181, 53.3651



47.4204, 53.3181, 58.1170

Square

The Square scheme is like the rectangle color scheme, but the four colors are evenly spaced on the color wheel.



53.6041, 53.3181, 53.3651



49.0123, 53.3181, 50.2109



47.8589, 53.3181, 63.0105



52.3795, 53.3181, 66.6749

Rectangle

The Rectangle color scheme consists of four colors that form a rectangle on the color wheel.



53.6041, 53.3181, 53.3651



51.2359, 53.3181, 49.1520



47.8589, 53.3181, 63.0105



50.1227, 53.3181, 67.9715

Sweetspot

The Sweet Spot groups the original color and five complimentary colors.



53.6056, 53.3205, 53.3662



90.6401, 93.7388, 99.5424



55.6479, 53.1213, 67.2538



19.2285, 19.8191, 20.9414



0.0000, 0.0000, 0.0000



20.3446, 21.4041, 23.3091

Same Dimension

The Same Dimension uses a secret algorithm to generate beautiful new colors.



53.6056, 53.3205, 53.3662



79.6330, 78.0591, 76.3451



56.4150, 58.9393, 54.3027



11.9172, 12.0250, 12.3050



16.4529, 8.8387, 0.8389



0.9577, 0.5696, 0.0595

Inverse Universe

The Inverse Universe completely reimagines the original color for something new.



54.3210, 60.1278, 70.3713



80.9574, 90.6661, 107.8412



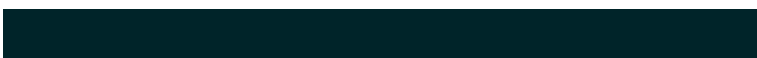
51.3709, 54.2278, 69.3879



12.0369, 13.1641, 15.1502



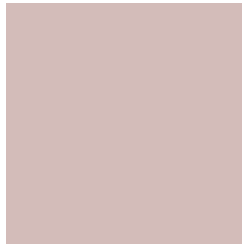
17.8205, 24.2875, 40.9412



1.0302, 1.4257, 2.3005

Previews

White Background



This preview shows how the XYZ color 53.6041, 53.3181, 53.3651 looks on a white background.

Color Contrast Check

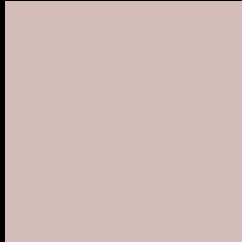
Large Text (above 18pt) WCAG AA × Fail

Any Text WCAG AA × Fail

Large Text (above 18pt) WCAG AAA × Fail

Any Text WCAG AAA × Fail

Black Background



This preview shows how the XYZ color 53.6041, 53.3181, 53.3651 looks on a black background.

Color Contrast Check

Large Text (above 18pt) WCAG AA ✓ Pass

Any Text WCAG AA ✓ Pass

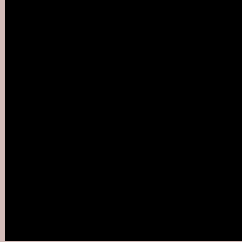
Large Text (above 18pt) WCAG AAA ✓ Pass

Any Text WCAG AAA ✓ Pass

If you want to check with other color combinations, try the [Color Contrast Checker](#).

XYZ 53.6041, 53.3181, 53.3651

Background



This preview shows how black text looks on a background with the XYZ color 53.6041, 53.3181, 53.3651.



This preview shows how white text looks on a background with the XYZ color 53.6041, 53.3181,

Color Blindness Simulation

Color vision deficiency is a very complex topic, and I could not describe the different causes any better than Wikipedia does, so if you want to learn more, you should check out their [article about color blindness](#).

Dichromacy



Original Color

53.6041, 53.3181, 53.3651

Protanopia

51.1080, 53.2929, 54.6066

Deuteranopia

54.5516, 53.4905, 53.3485



Tritanopia

55.4248, 53.4341, 62.0362

Trichromacy



Original Color

53.6041, 53.3181, 53.3651

Protanomaly

52.1223, 53.5033, 54.0344

Deuteranomaly

54.2588, 53.3396, 53.3348

Tritanomaly

54.7720, 53.4778, 59.0652

Monochromacy



Original Color

53.6041, 53.3181, 53.3651

Achromatopsia

51.8711, 54.5724, 59.4294

Achromatomaly

52.3410, 53.8784, 56.9311

CSS Examples

Text

The CSS property to change the color of the text to XYZ 53.6041, 53.3181, 53.3651 is called "color". The color property can be set on classes, ids or directly on the HTML element.

This example shows how text in the color `rgb(211, 188, 185)` looks like.

```
.text, #text, p{  
    color:rgb(211, 188, 185)  
}
```

If you want to add a text shadow in that color use the text-shadow property, you can generate a text shadow directly with our [CSS Text Shadow Generator](#).

Here you see how black text with a 4 pixel rgb(211, 188, 185) colored shadow looks like.

```
.shadow{ text-shadow: 4px 4px 2px rgb(211, 188, 185) }
```

Border

The CSS property to change the border of an element to XYZ 53.6041, 53.3181, 53.3651 is called "border". The border property can be set on classes, ids or directly on the HTML element.

This example shows the color as border, it can be applied via the CSS property "border" or "border-color".

```
.border, #border, table{ border:4px solid rgb(211, 188, 185) }
```


If only the border color should be changed use the property `border-color`.

```
.border{ border-color:rgb(211, 188, 185) }
```

If you want to add a box shadow in that color use:

Here you see how a box with a 4 pixel `rgb(211, 188, 185)` colored shadow looks like.

```
.boxshadow{ -moz-box-shadow:4px 4px 4px  
4px rgb(211, 188, 185); -webkit-box-  
shadow:4px 4px 4px 4px rgb(211, 188, 185);  
box-shadow:4px 4px 4px 4px rgb(211, 188,  
185) }
```

Background

The CSS property to change the background color of an element to XYZ 53.6041, 53.3181, 53.3651 is called "background". The background property can be set on classes, ids or directly on the HTML element.

```
.background, #background, body{  
background: rgb(211, 188, 185) }
```

If only the background color should be changed can be used:

```
.background{ background-color: rgb(211,  
188, 185) }
```

This example shows the color as background, it is applied via the CSS property "background".

To optimize and compress your CSS code, you can use our [online CSS compressor and optimizer](#) based on csstidy. If you want to create a linear or radial gradient as background or border, check our [CSS Gradient Generator](#).

Hey! You found this booklet interesting? Support Converting Colors with the new Membership Option!

The pro membership hides all ads, plus gives you double the colors in the color bucket, and more awesome pro features!

[Learn more, Memberships starting at \\$2.50/m!](#)

**Follow me
on Twitter!**

@ConvertingColor