

Converting Colors

XYZ(53.5800, 41.4502, 35.4512)

Have a look what the booklet for
XYZ(53.5800, 41.4502, 35.4512)
contains.

XYZ(53.5783, 41.5377, 35.3307)	3
<i>Conversions</i>	4
<i>Details</i>	6
<i>Harmonies</i>	12
<i>Previews</i>	24
<i>Color Blindness Simulation</i>	28
<i>CSS Examples</i>	31

Color

**XYZ(53.5783, 41.5377,
35.3307)**

Conversions

Conversions Part 1

Format	Color
Hex	F68F99
RGB	246, 143, 153
RGB Percent	96%, 56%, 60%
CMY	0.0353, 0.4392, 0.4000
CMYK	0.00, 0.42, 0.38, 0.04
HSL	354°, 85%, 76%
HSV	354°, 42%, 96%
XYZ	53.5783, 41.5377, 35.3307
YIQ	174.9370, 58.1780, 24.9460

Conversions

Conversions Part 2

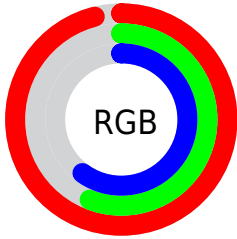
Format	Color
R_{YB}	246, 143, 153
Decimal	16158617
CIE _{Lab}	70.55, 39.97, 11.79
CIE _{LCh}	71, 41.673, 16.437
Yxy	41.5377, 0.4107, 0.3184
Android (android.graphics.Color)	4294348697 (0xFFFF68F99)
YUV	174.9370, -10.8149, 62.3223
Hunter-Lab	64.4497, 35.6034, 12.6126

Details

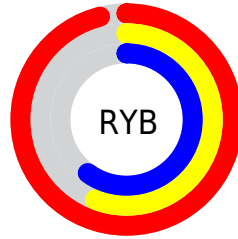
The XYZ color **53.5783, 41.5377, 35.3307** is a light color, and the websafe version is hex **FF9999**. A complement of this color would be **59.4258, 77.8083, 91.2478**, and the grayscale version is **40.7492, 42.8713, 46.6869**.

A 20% lighter version of the original color is **72.6966, 66.1532, 67.9688**, and **26.5480, 18.8364, 14.8069** is the 20% darker color. If you saturate the color by 10%, you get **48.6149, 34.2787, 25.4517**, and if you desaturate by 10%, it is **59.6951, 50.5567, 47.2799**.

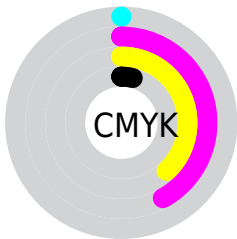
Distribution



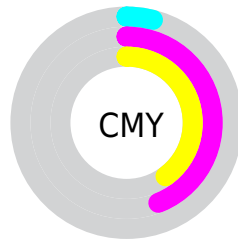
- Red (96%)
- Green (56%)
- Blue (60%)



- Red (96%)
- Yellow (56%)
- Blue (60%)



- Cyan (0%)
- Magenta (42%)
- Yellow (38%)
- Black (4%)



- Cyan (4%)
- Magenta (44%)
- Yellow (40%)

Brightness & Saturation Gradients

These gradients show how the XYZ color 53.5783, 41.5377, 35.3307 changes by changing the brightness by 10 percent. The first figure shows a shift by +10% for each color and the second figure -10%.

Similar to the brightness gradients but the following saturation gradients show a change of the XYZ color 53.5783, 41.5377, 35.3307 by changing the saturation by 10% instead.

53.5783, 41.5377,
35.3307

53.5783, 41.5377,
35.3307

390.7245,
352.5629, 340.9741

38.4940, 28.7395,
23.6321

94.6153, 77.4995,
69.1551

26.5452, 18.8838,
14.8513

121.2987,
101.4318, 92.1181

17.3668, 11.5864,
8.5696

152.5791,
129.8443, 119.6729

10.5933, 6.4627,
4.3686

188.8220,
163.1213, 152.2382

5.8593, 3.1284,
1.8297

230.3926,
201.6473, 190.2324

2.7996, 1.1991,
0.4474

277.6563,

1.0487, 0.0610,

245.8067, 234.0741

0.0000

330.9785,
295.9837, 284.1818

■ 0.0000, 0.0000,
0.0000

■ 53.5783, 41.5377,
35.3307

■ 53.5783, 41.5377,
35.3307

■ 48.6149, 34.2787,
25.4517

■ 59.6951, 50.5567,
47.2799

■ 44.7291, 28.6589,
17.5227

■ 67.0282, 61.4338,
61.4053

■ 41.8413, 24.5523,
11.4146


■ 75.6397, 74.2673,
77.8086

■ 39.8592, 21.8116,
6.9821

■ 85.5868, 89.1466,
96.5845

■ 38.6731, 20.2601,
4.0568

■ 91.8160, 98.3328,
108.7487

 38.1696, 19.6582,
2.6398

Harmonies

Analogous

The Analogous color harmony consists of three colors that are next to each other on the color wheel.



53.7891, 41.5377, 54.7082



53.5783, 41.5377, 35.3307



49.3181, 41.5377, 22.9522

Triad

The Triadic color harmony groups three colors that are evenly spaced from another and form a triangle on the color wheel.



53.5783, 41.5377, 35.3307



30.6484, 41.5377, 23.8178



36.4582, 41.5377, 92.9666

Complementary

The Complementary color scheme is a pair of colors which are on the opposite of each other on the color wheel.



53.5783, 41.5377, 35.3307



59.4258, 77.8083, 91.2478

Split Complementary

Split-complementary colors differ from the complementary color scheme. The scheme consists of three colors, the original color and two neighbors of the complement color.



31.0464, 41.5377, 78.6150



53.5783, 41.5377, 35.3307



27.9649, 41.5377, 36.9107

Square

The Square scheme is like the rectangle color scheme, but the four colors are evenly spaced on the color wheel.



53.5783, 41.5377, 35.3307



35.8537, 41.5377, 17.7501



28.1016, 41.5377, 56.8188



43.3436, 41.5377, 92.1737

Rectangle

The Rectangle color scheme consists of four colors that form a rectangle on the color wheel.



53.5783, 41.5377, 35.3307



45.0090, 41.5377, 18.6276



28.1016, 41.5377, 56.8188



34.4240, 41.5377, 89.6086

Sweetspot

The Sweet Spot groups the original color and five complimentary colors.



53.5794, 41.5398, 35.3315



80.9212, 78.8628, 82.2390



60.9508, 44.0825, 92.4851



16.8598, 16.1926, 16.7273



0.0000, 0.0000, 0.0000



20.3446, 21.4041, 23.3091

Same Dimension

The Same Dimension uses a secret algorithm to generate beautiful new colors.



53.5794, 41.5398, 35.3315



53.6183, 38.4579, 29.3587



60.1474, 55.9421, 33.6171



16.5644, 16.5086, 17.4530



20.3959, 10.5018, 1.5271



1.8141, 0.9316, 0.2476

Inverse Universe

The Inverse Universe completely reimagines the original color for something new.



53.5794, 41.5398, 35.3315



53.6183, 38.4579, 29.3587



49.7476, 56.0624, 95.3879



16.5644, 16.5086, 17.4530



20.3959, 10.5018, 1.5271



1.8141, 0.9316, 0.2476

Previews

White Background



This preview shows how the XYZ color 53.5783, 41.5377, 35.3307 looks on a white background.

Color Contrast Check

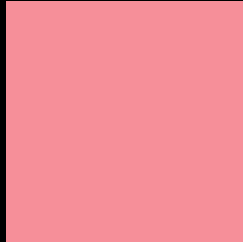
Large Text (above 18pt) WCAG AA × Fail

Any Text WCAG AA × Fail

Large Text (above 18pt) WCAG AAA × Fail

Any Text WCAG AAA × Fail

Black Background



This preview shows how the XYZ color 53.5783, 41.5377, 35.3307 looks on a black background.

Color Contrast Check

Large Text (above 18pt) WCAG AA ✓ Pass

Any Text WCAG AA ✓ Pass

Large Text (above 18pt) WCAG AAA ✓ Pass

Any Text WCAG AAA ✓ Pass

If you want to check with other color combinations, try the [Color Contrast Checker](#).

XYZ 53.5783, 41.5377, 35.3307

Background



This preview shows how black text looks on a background with the XYZ color 53.5783, 41.5377, 35.3307.



This preview shows how white text looks on a background with the XYZ color 53.5783, 41.5377,

Color Blindness Simulation

Color vision deficiency is a very complex topic, and I could not describe the different causes any better than Wikipedia does, so if you want to learn more, you should check out their [article about color blindness](#).

Dichromacy



Original Color

53.5783, 41.5377, 35.3307

Protanopia

40.0454, 41.7167, 43.4776

Deuteranopia

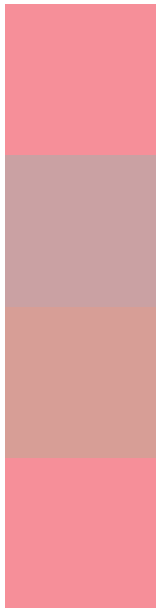
42.5322, 41.8131, 34.2628



Tritanopia

53.5783, 41.5377, 35.3307

Trichromacy



Original Color

53.5783, 41.5377, 35.3307

Protanomaly

43.7128, 40.6906, 40.2005

Deuteranomaly

45.7562, 41.1028, 34.3762

Tritanomaly

53.5783, 41.5377, 35.3307

Monochromacy



Original Color

53.5783, 41.5377, 35.3307

Achromatopsia

40.7470, 42.8690, 46.6844

Achromatomaly

44.1596, 41.4019, 42.2231

CSS Examples

Text

The CSS property to change the color of the text to XYZ 53.5783, 41.5377, 35.3307 is called "color". The color property can be set on classes, ids or directly on the HTML element.

This example shows how text in the color `rgb(246, 143, 153)` looks like.

```
.text, #text, p{  
    color:rgb(246, 143, 153)  
}
```

If you want to add a text shadow in that color use the text-shadow property, you can generate a text shadow directly with our [CSS Text Shadow Generator](#).

Here you see how black text with a 4 pixel rgb(246, 143, 153) colored shadow looks like.

```
.shadow{ text-shadow: 4px 4px 2px rgb(246, 143, 153) }
```

Border

The CSS property to change the border of an element to XYZ 53.5783, 41.5377, 35.3307 is called "border". The border property can be set on classes, ids or directly on the HTML element.

This example shows the color as border, it can be applied via the CSS property "border" or "border-color".

```
.border, #border, table{ border:4px solid rgb(246, 143, 153) }
```


If only the border color should be changed use the property `border-color`.

```
.border{ border-color:rgb(246, 143, 153) }
```

If you want to add a box shadow in that color use:

Here you see how a box with a 4 pixel `rgb(246, 143, 153)` colored shadow looks like.

```
.boxshadow{ -moz-box-shadow:4px 4px 4px  
4px rgb(246, 143, 153); -webkit-box-  
shadow:4px 4px 4px 4px rgb(246, 143, 153);  
box-shadow:4px 4px 4px 4px rgb(246, 143,  
153) }
```

Background

The CSS property to change the background color of an element to XYZ 53.5783, 41.5377, 35.3307 is called "background". The background property can be set on classes, ids or directly on the HTML element.

```
.background, #background, body{  
background: rgb(246, 143, 153) }
```

If only the background color should be changed can be used:

```
.background{ background-color: rgb(246,  
143, 153) }
```

This example shows the color as background, it is applied via the CSS property "background".

To optimize and compress your CSS code, you can use our [online CSS compressor and optimizer](#) based on csstidy. If you want to create a linear or radial gradient as background or border, check our [CSS Gradient Generator](#).

Hey! You found this booklet interesting? Support Converting Colors with the new Membership Option!

The pro membership hides all ads, plus gives you double the colors in the color bucket, and more awesome pro features!

[Learn more, Memberships starting at \\$2.50/m!](#)

**Follow me
on Twitter!**

@ConvertingColor