

Converting Colors

XYZ(53.5984, 51.3222, 45.1114)

Have a look what the booklet for
XYZ(53.5984, 51.3222, 45.1114)
contains.

XYZ(53.5984, 51.3222, 45.1114)	3
<i>Conversions</i>	4
<i>Details</i>	6
<i>Harmonies</i>	12
<i>Previews</i>	24
<i>Color Blindness Simulation</i>	28
<i>CSS Examples</i>	31

Color

**XYZ(53.5984, 51.3222,
45.1114)**

Conversions

Conversions Part 1

Format	Color
Hex	DDB5AA
RGB	221, 181, 170
RGB Percent	87%, 71%, 67%
CMY	0.1333, 0.2902, 0.3333
CMYK	0.00, 0.18, 0.23, 0.13
HSL	13°, 43%, 77%
HSV	13°, 23%, 87%
XYZ	53.5984, 51.3222, 45.1114
YIQ	191.7060, 27.3710, 5.0590

Conversions

Conversions Part 2

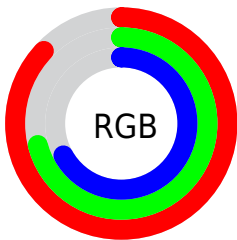
Format	Color
R _Y B	221, 184, 170
Decimal	14529962
CIE Lab	76.87, 12.77, 11.03
CIE LCh	77, 16.872, 40.819
Yxy	51.3222, 0.3572, 0.3421
Android (android.graphics.Color)	4292720042 (0xFFDDB5AA)
YUV	191.7060, -10.7011, 25.6908
Hunter-Lab	71.6395, 8.1789, 12.8127

Details

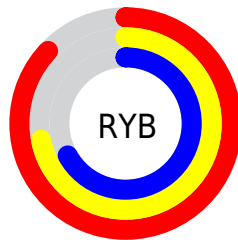
The XYZ color **53.5984, 51.3222, 45.1114** is a light color, and the websafe version is hex **CC9999**. A complement of this color would be **52.6748, 59.8581, 77.1845**, and the grayscale version is **49.9819, 52.5848, 57.2649**.

A 20% lighter version of the original color is **85.1148, 87.2646, 83.5919**, and **26.5062, 24.7457, 20.5189** is the 20% darker color. If you saturate the color by 10%, you get **48.3736, 43.9416, 33.9080**, and if you desaturate by 10%, it is **59.6158, 59.7249, 58.3140**.

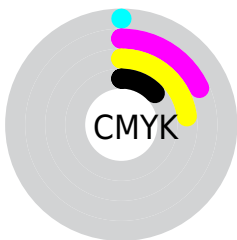
Distribution



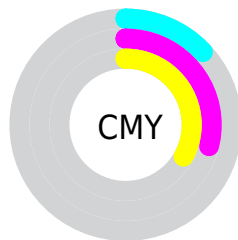
- Red (87%)
- Green (71%)
- Blue (67%)



- Red (87%)
- Yellow (72%)
- Blue (67%)



- Cyan (0%)
- Magenta (18%)
- Yellow (23%)
- Black (13%)



- Cyan (13%)
- Magenta (29%)
- Yellow (33%)

Brightness & Saturation Gradients

These gradients show how the XYZ color 53.5984, 51.3222, 45.1114 changes by changing the brightness by 10 percent. The first figure shows a shift by +10% for each color and the second figure -10%.

Similar to the brightness gradients but the following saturation gradients show a change of the XYZ color 53.5984, 51.3222, 45.1114 by changing the saturation by 10% instead.

■ 53.5984, 51.3222,
45.1114

■ 53.5984, 51.3222,
45.1114

390.8001,
391.8143, 383.3978

■ 38.5101, 36.4651,
31.2016

■ 94.6447, 92.1309,
84.2078

■ 26.5578, 24.7936,
20.4927

121.3333,
118.8512, 110.2314

■ 17.3763, 15.9234,
12.5660

152.6195,
150.2947, 141.1301

■ 10.6001, 9.4699,
7.0032

188.8685,
186.8459, 177.3223

■ 5.8639, 5.0489,
3.3856

230.4457,
228.8890, 219.2267

■ 2.8024, 2.2760,
1.2948

277.7165,

■ 1.0501, 0.7610,

276.8085, 267.2617

0.0575

331.0462,
330.9888, 321.8459

■ 0.0000, 0.0000,
0.0000

■ 53.5984, 51.3222,
45.1114

■ 53.5984, 51.3222,
45.1114

■ 48.3736, 43.9416,
33.9080

■ 59.6158, 59.7249,
58.3140

■ 43.9038, 37.5370,
24.6028

■ 66.4533, 69.1796,
73.6038

■ 40.1542, 32.0691,
17.0908

■ 74.1420, 79.7237,
91.0672

■ 37.0857, 27.4931,
11.2554

■ 82.1577, 91.1696,
107.8751

■ 34.6552, 23.7607,
6.9659

■ 83.6290, 94.1122,
108.3655

■ 32.8143, 20.8184,
4.0723

■ 31.5068, 18.6064,
2.3941

■ 30.8631, 17.4605,
1.7436

Harmonies

Analogous

The Analogous color harmony consists of three colors that are next to each other on the color wheel.



55.0927, 51.3222, 52.6305



53.5984, 51.3222, 45.1114



50.8349, 51.3222, 40.8026

Triad

The Triadic color harmony groups three colors that are evenly spaced from another and form a triangle on the color wheel.



53.5984, 51.3222, 45.1114



43.1835, 51.3222, 50.2761



49.9472, 51.3222, 75.0892

Complementary

The Complementary color scheme is a pair of colors which are on the opposite of each other on the color wheel.



53.5984, 51.3222, 45.1114



52.6748, 59.8581, 77.1845

Split Complementary

Split-complementary colors differ from the complementary color scheme. The scheme consists of three colors, the original color and two neighbors of the complement color.



46.7817, 51.3222, 74.2804



53.5984, 51.3222, 45.1114



42.9693, 51.3222, 59.2630

Square

The Square scheme is like the rectangle color scheme, but the four colors are evenly spaced on the color wheel.



53.5984, 51.3222, 45.1114



44.8585, 51.3222, 43.5508



44.2598, 51.3222, 68.2415



52.9241, 51.3222, 70.3435

Rectangle

The Rectangle color scheme consists of four colors that form a rectangle on the color wheel.



53.5984, 51.3222, 45.1114



48.6921, 51.3222, 40.0141



44.2598, 51.3222, 68.2415



48.8685, 51.3222, 75.4700

Sweetspot

The Sweet Spot groups the original color and five complimentary colors.



53.5998, 51.3245, 45.1125



88.0037, 90.2947, 93.0260



55.9268, 48.8153, 67.9718



18.7122, 19.1551, 19.6333



0.0000, 0.0000, 0.0000



20.3446, 21.4041, 23.3091

Same Dimension

The Same Dimension uses a secret algorithm to generate beautiful new colors.



53.5998, 51.3245, 45.1125



70.2747, 65.5536, 54.0771



59.0741, 62.2733, 46.9372



13.2827, 13.5047, 13.6322



17.9967, 10.2790, 1.0355



1.2297, 0.7935, 0.0884

Inverse Universe

The Inverse Universe completely reimagines the original color for something new.



52.6748, 59.8581, 77.1845



68.7621, 79.4424, 106.3175



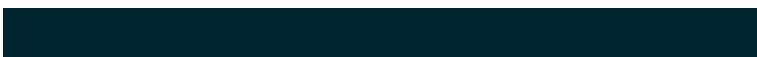
47.0411, 48.5907, 75.3066



13.1940, 14.3278, 16.7223



16.3837, 20.6368, 42.8582



1.1219, 1.4580, 2.7967

Previews

White Background



This preview shows how the XYZ color 53.5984, 51.3222, 45.1114 looks on a white background.

Color Contrast Check

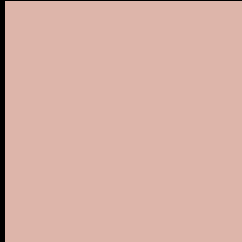
Large Text (above 18pt) WCAG AA × Fail

Any Text WCAG AA × Fail

Large Text (above 18pt) WCAG AAA × Fail

Any Text WCAG AAA × Fail

Black Background



This preview shows how the XYZ color 53.5984, 51.3222, 45.1114 looks on a black background.

Color Contrast Check

Large Text (above 18pt) WCAG AA ✓ Pass

Any Text WCAG AA ✓ Pass

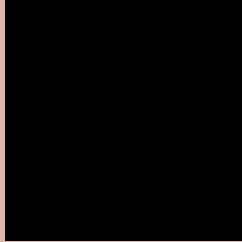
Large Text (above 18pt) WCAG AAA ✓ Pass

Any Text WCAG AAA ✓ Pass

If you want to check with other color combinations, try the [Color Contrast Checker](#).

XYZ 53.5984, 51.3222, 45.1114

Background



This preview shows how black text looks on a background with the XYZ color 53.5984, 51.3222, 45.1114.



This preview shows how white text looks on a background with the XYZ color 53.5984, 51.3222,

Color Blindness Simulation

Color vision deficiency is a very complex topic, and I could not describe the different causes any better than Wikipedia does, so if you want to learn more, you should check out their [article about color blindness](#).

Dichromacy



Original Color

53.5984, 51.3222, 45.1114

Protanopia

48.8635, 51.3215, 47.3751

Deuteranopia

52.5081, 51.3682, 45.1778



Tritanopia

56.1753, 51.4939, 56.8477

Trichromacy



Original Color

53.5984, 51.3222, 45.1114

Protanomaly

50.5553, 51.2568, 46.7642

Deuteranomaly

52.8971, 51.2636, 45.1371

Tritanomaly

55.2033, 51.3889, 52.3569

Monochromacy



Original Color

53.5984, 51.3222, 45.1114

Achromatopsia

50.1023, 52.7115, 57.4028

Achromatomaly

51.2636, 52.1236, 52.7064

CSS Examples

Text

The CSS property to change the color of the text to XYZ 53.5984, 51.3222, 45.1114 is called "color". The color property can be set on classes, ids or directly on the HTML element.

This example shows how text in the color `rgb(221, 181, 170)` looks like.

```
.text, #text, p{  
    color:rgb(221, 181, 170)  
}
```

If you want to add a text shadow in that color use the text-shadow property, you can generate a text shadow directly with our [CSS Text Shadow Generator](#).

Here you see how black text with a 4 pixel rgb(221, 181, 170) colored shadow looks like.

```
.shadow{ text-shadow: 4px 4px 2px rgb(221, 181, 170) }
```

Border

The CSS property to change the border of an element to XYZ 53.5984, 51.3222, 45.1114 is called "border". The border property can be set on classes, ids or directly on the HTML element.

This example shows the color as border, it can be applied via the CSS property "border" or "border-color".

```
.border, #border, table{ border:4px solid rgb(221, 181, 170) }
```


If only the border color should be changed use the property `border-color`.

```
.border{ border-color:rgb(221, 181, 170) }
```

If you want to add a box shadow in that color use:

Here you see how a box with a 4 pixel `rgb(221, 181, 170)` colored shadow looks like.

```
.boxshadow{ -moz-box-shadow:4px 4px 4px 4px rgb(221, 181, 170); -webkit-box-shadow:4px 4px 4px 4px rgb(221, 181, 170); box-shadow:4px 4px 4px 4px rgb(221, 181, 170) }
```

Background

The CSS property to change the background color of an element to XYZ 53.5984, 51.3222, 45.1114 is called "background". The background property can be set on classes, ids or directly on the HTML element.

```
.background, #background, body{  
background: rgb(221, 181, 170) }
```

If only the background color should be changed can be used:

```
.background{ background-color: rgb(221,  
181, 170) }
```

This example shows the color as background, it is applied via the CSS property "background".

To optimize and compress your CSS code, you can use our [online CSS compressor and optimizer](#) based on csstidy. If you want to create a linear or radial gradient as background or border, check our [CSS Gradient Generator](#).

Hey! You found this booklet interesting? Support Converting Colors with the new Membership Option!

The pro membership hides all ads, plus gives you double the colors in the color bucket, and more awesome pro features!

[Learn more, Memberships starting at \\$2.50/m!](#)

**Follow me
on Twitter!**

@ConvertingColor