

Converting Colors

XYZ(53.6990, 53.9417, 55.3474)

Have a look what the booklet for
XYZ(53.6990, 53.9417, 55.3474)
contains.

XYZ(53.7851, 54.0131, 55.1677)	3
<i>Conversions</i>	4
<i>Details</i>	6
<i>Harmonies</i>	12
<i>Previews</i>	24
<i>Color Blindness Simulation</i>	28
<i>CSS Examples</i>	31

Color

**XYZ(53.7851, 54.0131,
55.1677)**

Conversions

Conversions Part 1

Format	Color
Hex	D1BEBC
RGB	209, 190, 188
RGB Percent	82%, 75%, 74%
CMY	0.1804, 0.2549, 0.2627
CMYK	0.00, 0.09, 0.10, 0.18
HSL	6°, 19%, 78%
HSV	6°, 10%, 82%
XYZ	53.7851, 54.0131, 55.1677
YIQ	195.4530, 11.9660, 3.4060

Conversions

Conversions Part 2

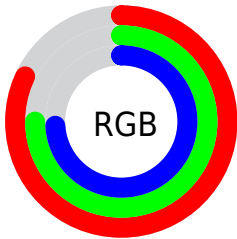
Format	Color
R _Y B	209, 190, 188
Decimal	13745852
CIE Lab	78.47, 6.37, 3.44
CIE LCh	78, 7.237, 28.338
Yxy	54.0131, 0.3300, 0.3314
Android (android.graphics.Color)	4291935932 (0xFFD1BEBC)
YUV	195.4530, -3.6743, 11.8807
Hunter-Lab	73.4936, 2.0185, 6.9397

Details

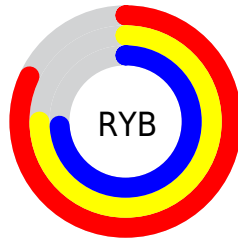
The XYZ color **53.7851, 54.0131, 55.1677** is a light color, and the websafe version is hex **CCCCCC**. A complement of this color would be **54.5603, 59.9194, 69.0123**, and the grayscale version is **52.1595, 54.8759, 59.7598**.

A 20% lighter version of the original color is **90.5249, 93.7032, 98.9033**, and **26.6453, 26.5106, 26.6344** is the 20% darker color. If you saturate the color by 10%, you get **47.8609, 45.5126, 42.8705**, and if you desaturate by 10%, it is **60.5698, 63.7113, 69.3627**.

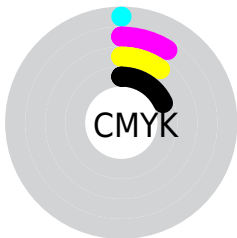
Distribution



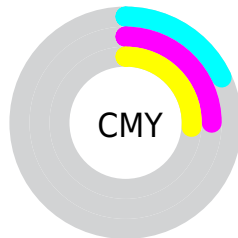
- Red (82%)
- Green (75%)
- Blue (74%)



- Red (82%)
- Yellow (75%)
- Blue (74%)



- Cyan (0%)
- Magenta (9%)
- Yellow (10%)
- Black (18%)





- Cyan (18%)
- Magenta (25%)
- Yellow (26%)

Brightness & Saturation Gradients


These gradients show how the XYZ color 53.7851, 54.0131, 55.1677 changes by changing the brightness by 10 percent. The first figure shows a shift by +10% for each color and the second figure -10%.


Similar to the brightness gradients but the following saturation gradients show a change of the XYZ color 53.7851, 54.0131, 55.1677 by changing the saturation by 10% instead.


 53.7851, 54.0131,
55.1677

 53.7851, 54.0131,
55.1677


391.5017,
402.1600, 423.8472

 38.6599, 38.6121,
39.1365


 94.9174, 96.0935,
99.2602

 26.6748, 26.4581,
26.5573


121.6551,
123.5417, 128.1586

 17.4644, 17.1667,
17.0115


152.9945,
155.7744, 162.1832

 10.6635, 10.3534,
10.0807

189.3007,
193.1761, 201.7525

 5.9067, 5.6339,
5.3462

230.9392,
236.1311, 247.2849

 2.8285, 2.6238,
2.3895

278.2753,

 1.0637, 0.9386,

285.0238, 299.1992

0.7807

331.6743,
340.2386, 357.9137

■ 0.0000, 0.0000,
0.0000

■ 53.7851, 54.0131,
55.1677

■ 53.7851, 54.0131,
55.1677

■ 47.8609, 45.5126,
42.8705

■ 60.5698, 63.7113,
69.3627

■ 42.7584, 38.1564,
32.3875

■ 68.2429, 74.6435,
85.5277

■ 38.4427, 31.8978,
23.6337

■ 76.8364, 86.8537,
103.7351

■ 34.8744, 26.6841,
16.5162

■ 80.1048, 92.2955,
108.2006

■ 32.0108, 22.4582,
10.9331

■ 29.8048, 19.1577,
6.7712

■ 28.2036, 16.7129,
3.9019

■ 27.1459, 15.0441,
2.1729

■ 26.5440, 14.0538,
1.3136

Harmonies

Analogous

The Analogous color harmony consists of three colors that are next to each other on the color wheel.



54.1230, 54.0131, 59.0388



53.7851, 54.0131, 55.1677



52.7882, 54.0131, 52.3874

Triad

The Triadic color harmony groups three colors that are evenly spaced from another and form a triangle on the color wheel.



53.7851, 54.0131, 55.1677



49.0429, 54.0131, 54.7912



51.2585, 54.0131, 67.0008

Complementary

The Complementary color scheme is a pair of colors which are on the opposite of each other on the color wheel.



53.7851, 54.0131, 55.1677



54.5603, 59.9194, 69.0123

Split Complementary

Split-complementary colors differ from the complementary color scheme. The scheme consists of three colors, the original color and two neighbors of the complement color.



49.9143, 54.0131, 65.7395



53.7851, 54.0131, 55.1677



48.6499, 54.0131, 58.5840

Square

The Square scheme is like the rectangle color scheme, but the four colors are evenly spaced on the color wheel.



53.7851, 54.0131, 55.1677



50.0494, 54.0131, 52.1772



48.9659, 54.0131, 62.6114



52.6482, 54.0131, 65.9848

Rectangle

The Rectangle color scheme consists of four colors that form a rectangle on the color wheel.



53.7851, 54.0131, 55.1677



51.8932, 54.0131, 51.4624



48.9659, 54.0131, 62.6114



50.7865, 54.0131, 66.8280

Sweetspot

The Sweet Spot groups the original color and five complimentary colors.



53.7866, 54.0155, 55.1689



91.6746, 95.1810, 101.8191



55.5715, 54.0397, 66.6944



19.4337, 20.1034, 21.3986



0.0000, 0.0000, 0.0000



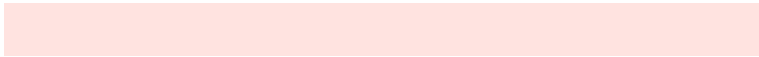
20.3446, 21.4041, 23.3091

Same Dimension

The Same Dimension uses a secret algorithm to generate beautiful new colors.



53.7866, 54.0155, 55.1689



82.3055, 81.7769, 82.2523



56.0845, 58.6114, 55.9348



11.8982, 11.9871, 12.2987



16.3986, 8.7301, 0.8208



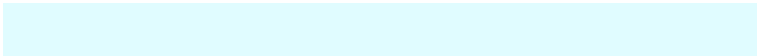
0.9488, 0.5518, 0.0565

Inverse Universe

The Inverse Universe completely reimagines the original color for something new.



54.5603, 59.9194, 69.0123



83.7502, 92.8024, 108.1063



52.1579, 55.1146, 68.2115



12.0579, 13.2062, 15.1572



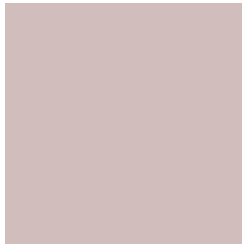
18.3632, 25.3731, 41.1221



1.0554, 1.4760, 2.3088

Previews

White Background



This preview shows how the XYZ color 53.7851, 54.0131, 55.1677 looks on a white background.

Color Contrast Check

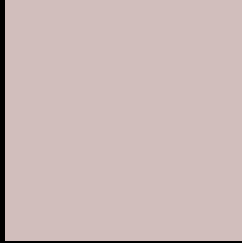
Large Text (above 18pt) WCAG AA × Fail

Any Text WCAG AA × Fail

Large Text (above 18pt) WCAG AAA × Fail

Any Text WCAG AAA × Fail

Black Background



This preview shows how the XYZ color 53.7851, 54.0131, 55.1677 looks on a black background.

Color Contrast Check

Large Text (above 18pt) WCAG AA ✓ Pass

Any Text WCAG AA ✓ Pass

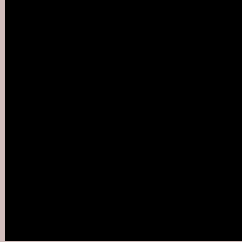
Large Text (above 18pt) WCAG AAA ✓ Pass

Any Text WCAG AAA ✓ Pass

If you want to check with other color combinations, try the [Color Contrast Checker](#).

XYZ 53.7851, 54.0131, 55.1677

Background



This preview shows how black text looks on a background with the XYZ color 53.7851, 54.0131, 55.1677.



This preview shows how white text looks on a background with the XYZ color 53.7851, 54.0131,

Color Blindness Simulation

Color vision deficiency is a very complex topic, and I could not describe the different causes any better than Wikipedia does, so if you want to learn more, you should check out their [article about color blindness](#).

Dichromacy



Original Color

53.7851, 54.0131, 55.1677

Protanopia

51.9174, 53.9997, 56.4018

Deuteranopia

55.0847, 54.0444, 55.1053



Tritanopia

55.5079, 54.0796, 63.3899

Trichromacy



Original Color

53.7851, 54.0131, 55.1677

Protanomaly

52.6635, 54.0699, 55.8050

Deuteranomaly

54.7153, 54.1722, 55.1494

Tritanomaly

54.8540, 54.1280, 60.3800

Monochromacy



Original Color

53.7851, 54.0131, 55.1677

Achromatopsia

51.8711, 54.5724, 59.4294

Achromatomaly

52.4038, 54.2251, 57.5737

CSS Examples

Text

The CSS property to change the color of the text to XYZ 53.7851, 54.0131, 55.1677 is called "color". The color property can be set on classes, ids or directly on the HTML element.

This example shows how text in the color `rgb(209, 190, 188)` looks like.

```
.text, #text, p{  
    color:rgb(209, 190, 188)  
}
```

If you want to add a text shadow in that color use the text-shadow property, you can generate a text shadow directly with our [CSS Text Shadow Generator](#).

Here you see how black text with a 4 pixel rgb(209, 190, 188) colored shadow looks like.

```
.shadow{ text-shadow: 4px 4px 2px rgb(209, 190, 188) }
```

Border

The CSS property to change the border of an element to XYZ 53.7851, 54.0131, 55.1677 is called "border". The border property can be set on classes, ids or directly on the HTML element.

This example shows the color as border, it can be applied via the CSS property "border" or "border-color".

```
.border, #border, table{ border:4px solid rgb(209, 190, 188) }
```


If only the border color should be changed use the property border-color.

```
.border{ border-color:rgb(209, 190, 188) }
```

If you want to add a box shadow in that color use:

Here you see how a box with a 4 pixel rgb(209, 190, 188) colored shadow looks like.

```
.boxshadow{ -moz-box-shadow:4px 4px 4px  
4px rgb(209, 190, 188); -webkit-box-  
shadow:4px 4px 4px 4px rgb(209, 190, 188);  
box-shadow:4px 4px 4px 4px rgb(209, 190,  
188) }
```

Background

The CSS property to change the background color of an element to XYZ 53.7851, 54.0131, 55.1677 is called "background". The background property can be set on classes, ids or directly on the HTML element.

```
.background, #background, body{  
background: rgb(209, 190, 188) }
```

If only the background color should be changed can be used:

```
.background{ background-color: rgb(209,  
190, 188) }
```

This example shows the color as background, it is applied via the CSS property "background".

To optimize and compress your CSS code, you can use our [online CSS compressor and optimizer](#) based on csstidy. If you want to create a linear or radial gradient as background or border, check our [CSS Gradient Generator](#).

Hey! You found this booklet interesting? Support Converting Colors with the new Membership Option!

The pro membership hides all ads, plus gives you double the colors in the color bucket, and more awesome pro features!

[Learn more, Memberships starting at \\$2.50/m!](#)

**Follow me
on Twitter!**

@ConvertingColor