

Converting Colors

XYZ(53.7019, 50.6736, 46.5134)

Have a look what the booklet for
XYZ(53.7019, 50.6736, 46.5134)
contains.

XYZ(53.7871, 50.7869, 46.5031)	3
<i>Conversions</i>	4
<i>Details</i>	6
<i>Harmonies</i>	12
<i>Previews</i>	24
<i>Color Blindness Simulation</i>	28
<i>CSS Examples</i>	31

Color

**XYZ(53.7871, 50.7869,
46.5031)**

Conversions

Conversions Part 1

Format	Color
Hex	DEB3AD
RGB	222, 179, 173
RGB Percent	87%, 70%, 68%
CMY	0.1294, 0.2980, 0.3216
CMYK	0.00, 0.19, 0.22, 0.13
HSL	7°, 43%, 77%
HSV	7°, 22%, 87%
XYZ	53.7871, 50.7869, 46.5031
YIQ	191.1730, 27.5540, 7.2500

Conversions

Conversions Part 2

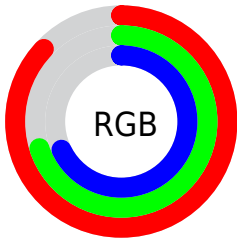
Format	Color
R _Y B	222, 180, 173
Decimal	14594989
CIE Lab	76.55, 14.65, 8.95
CIE LCh	77, 17.169, 31.430
Yxy	50.7869, 0.3560, 0.3362
Android (android.graphics.Color)	4292785069 (0xFFDEB3AD)
YUV	191.1730, -8.9593, 27.0353
Hunter-Lab	71.2649, 10.0090, 11.1964

Details

The XYZ color **53.7871, 50.7869, 46.5031** is a light color, and the websafe version is hex **CC9999**. A complement of this color would be **54.9737, 63.2682, 78.4221**, and the grayscale version is **49.6619, 52.2482, 56.8983**.

A 20% lighter version of the original color is **84.9519, 86.2781, 85.5747**, and **26.6379, 24.4092, 21.3966** is the 20% darker color. If you saturate the color by 10%, you get **48.1829, 42.7350, 34.9028**, and if you desaturate by 10%, it is **60.3026, 60.0892, 60.1693**.

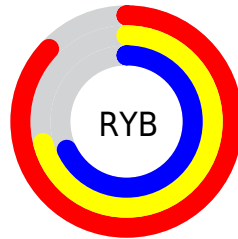
Distribution



Red (87%)

Green (70%)

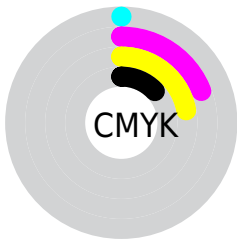
Blue (68%)



Red (87%)

Yellow (71%)

Blue (68%)

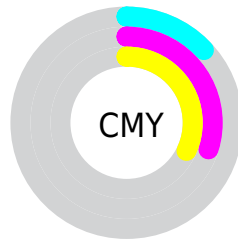


Cyan (0%)

Magenta (19%)

Yellow (22%)

Black (13%)



Cyan (13%)


Magenta (30%)


Yellow (32%)

Brightness & Saturation Gradients


These gradients show how the XYZ color 53.7871, 50.7869, 46.5031 changes by changing the brightness by 10 percent. The first figure shows a shift by +10% for each color and the second figure -10%.


Similar to the brightness gradients but the following saturation gradients show a change of the XYZ color 53.7871, 50.7869, 46.5031 by changing the saturation by 10% instead.


 53.7871, 50.7869,
46.5031

 53.7871, 50.7869,
46.5031


391.5092,
389.7353, 389.1638

 38.6615, 36.0390,
32.2915

 94.9203, 91.3397,
86.3136

 26.6760, 24.4644,
21.3176


121.6586,
117.9134, 112.7496

 17.4654, 15.6784,
13.1628


152.9985,
149.1979, 144.0975

 10.6642, 9.2969,
7.4087

189.3053,
185.5775, 180.7758

 5.9071, 4.9353,
3.6367

230.9444,
227.4367, 223.2030

 2.8288, 2.2094,
1.4282

278.2812,

 1.0639, 0.7251,

275.1597, 271.7977

0.1636

331.6811,
329.1312, 326.9785

■ 0.0000, 0.0000,
0.0000

■ 53.7871, 50.7869,
46.5031

■ 53.7871, 50.7869,
46.5031

■ 48.1829, 42.7350,
34.9028

■ 60.3026, 60.0892,
60.1693

■ 43.4451, 35.8737,
25.2647

■ 67.7633, 70.6849,
75.9917

■ 39.5315, 30.1482,
17.4809

■ 76.2064, 82.6235,
94.0594

■ 36.3945, 25.4971,
11.4321

■ 83.9343, 94.2697,
108.3798

■ 33.9816, 21.8529,
6.9846

■ 32.2335, 19.1406,
3.9854

■ 31.0814, 17.2743,
2.2514

■ 30.5209, 16.3229,
1.5420

Harmonies

Analogous

The Analogous color harmony consists of three colors that are next to each other on the color wheel.



54.7738, 50.7869, 54.8540



53.7871, 50.7869, 46.5031



51.3137, 50.7869, 41.0571

Triad

The Triadic color harmony groups three colors that are evenly spaced from another and form a triangle on the color wheel.



53.7871, 50.7869, 46.5031



43.0022, 50.7869, 47.1940



48.4271, 50.7869, 75.1301

Complementary

The Complementary color scheme is a pair of colors which are on the opposite of each other on the color wheel.



53.7871, 50.7869, 46.5031



54.9737, 63.2682, 78.4221

Split Complementary

Split-complementary colors differ from the complementary color scheme. The scheme consists of three colors, the original color and two neighbors of the complement color.



45.3518, 50.7869, 72.5020



53.7871, 50.7869, 46.5031



42.3051, 50.7869, 55.7450

Square

The Square scheme is like the rectangle color scheme, but the four colors are evenly spaced on the color wheel.



53.7871, 50.7869, 46.5031



45.0939, 50.7869, 41.4234



43.1463, 50.7869, 65.1379



51.5949, 50.7869, 71.9697

Rectangle

The Rectangle color scheme consists of four colors that form a rectangle on the color wheel.



53.7871, 50.7869, 46.5031



49.2061, 50.7869, 39.4596



43.1463, 50.7869, 65.1379



47.3486, 50.7869, 74.8927

Sweetspot

The Sweet Spot groups the original color and five complimentary colors.



53.7885, 50.7892, 46.5042



87.5133, 89.3139, 92.8626



57.4996, 50.3899, 71.8540



18.5990, 18.9287, 19.5956



0.0000, 0.0000, 0.0000



20.3446, 21.4041, 23.3091

Same Dimension

The Same Dimension uses a secret algorithm to generate beautiful new colors.



53.7885, 50.7892, 46.5042



70.3191, 64.7738, 56.7699



59.0746, 61.3615, 48.2662



13.8419, 13.9697, 14.2737



18.1718, 9.7814, 0.9302



1.3047, 0.7683, 0.0795

Inverse Universe

The Inverse Universe completely reimagines the original color for something new.



54.9737, 63.2682, 78.4221



72.1847, 84.4461, 107.1029



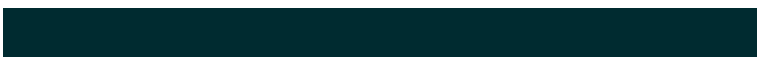
49.2210, 51.7629, 76.5046



13.9657, 15.2706, 17.5991



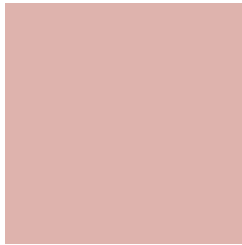
19.4516, 26.3727, 45.1136



1.3891, 1.9097, 3.1406

Previews

White Background



This preview shows how the XYZ color 53.7871, 50.7869, 46.5031 looks on a white background.

Color Contrast Check

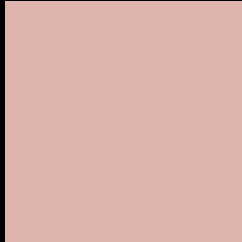
Large Text (above 18pt) WCAG AA × Fail

Any Text WCAG AA × Fail

Large Text (above 18pt) WCAG AAA × Fail

Any Text WCAG AAA × Fail

Black Background



This preview shows how the XYZ color 53.7871, 50.7869, 46.5031 looks on a black background.

Color Contrast Check

Large Text (above 18pt) WCAG AA ✓ Pass

Any Text WCAG AA ✓ Pass

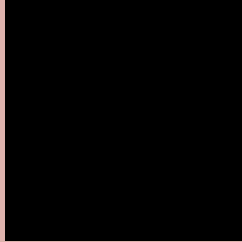
Large Text (above 18pt) WCAG AAA ✓ Pass

Any Text WCAG AAA ✓ Pass

If you want to check with other color combinations, try the [Color Contrast Checker](#).

XYZ 53.7871, 50.7869, 46.5031

Background



This preview shows how black text looks on a background with the XYZ color 53.7871, 50.7869, 46.5031.



This preview shows how white text looks on a background with the XYZ color 53.7871, 50.7869,

Color Blindness Simulation

Color vision deficiency is a very complex topic, and I could not describe the different causes any better than Wikipedia does, so if you want to learn more, you should check out their [article about color blindness](#).

Dichromacy



Original Color

53.7871, 50.7869, 46.5031

Protanopia

48.5248, 50.7829, 49.3640

Deuteranopia

51.9059, 50.7306, 46.0860



Tritanopia

55.5601, 50.6157, 55.5567

Trichromacy



Original Color

53.7871, 50.7869, 46.5031

Protanomaly

50.3623, 50.8116, 48.2275

Deuteranomaly

52.5855, 50.7780, 46.0593

Tritanomaly

54.8053, 50.5929, 52.2243

Monochromacy



Original Color

53.7871, 50.7869, 46.5031

Achromatopsia

49.5206, 52.0996, 56.7364

Achromatomaly

50.7792, 51.5579, 52.6227

CSS Examples

Text

The CSS property to change the color of the text to XYZ 53.7871, 50.7869, 46.5031 is called "color". The color property can be set on classes, ids or directly on the HTML element.

This example shows how text in the color `rgb(222, 179, 173)` looks like.

```
.text, #text, p{  
    color:rgb(222, 179, 173)  
}
```

If you want to add a text shadow in that color use the text-shadow property, you can generate a text shadow directly with our [CSS Text Shadow Generator](#).

Here you see how black text with a 4 pixel rgb(222, 179, 173) colored shadow looks like.

```
.shadow{ text-shadow: 4px 4px 2px rgb(222, 179, 173) }
```

Border

The CSS property to change the border of an element to XYZ 53.7871, 50.7869, 46.5031 is called "border". The border property can be set on classes, ids or directly on the HTML element.

This example shows the color as border, it can be applied via the CSS property "border" or "border-color".

```
.border, #border, table{ border:4px solid rgb(222, 179, 173) }
```


If only the border color should be changed use the property `border-color`.

```
.border{ border-color:rgb(222, 179, 173) }
```

If you want to add a box shadow in that color use:

Here you see how a box with a 4 pixel `rgb(222, 179, 173)` colored shadow looks like.

```
.boxshadow{ -moz-box-shadow:4px 4px 4px  
4px rgb(222, 179, 173); -webkit-box-  
shadow:4px 4px 4px 4px rgb(222, 179, 173);  
box-shadow:4px 4px 4px 4px rgb(222, 179,  
173) }
```

Background

The CSS property to change the background color of an element to XYZ 53.7871, 50.7869, 46.5031 is called "background". The background property can be set on classes, ids or directly on the HTML element.

```
.background, #background, body{  
background: rgb(222, 179, 173) }
```

If only the background color should be changed can be used:

```
.background{ background-color: rgb(222,  
179, 173) }
```

This example shows the color as background, it is applied via the CSS property "background".

To optimize and compress your CSS code, you can use our [online CSS compressor and optimizer](#) based on csstidy. If you want to create a linear or radial gradient as background or border, check our [CSS Gradient Generator](#).

Hey! You found this booklet interesting? Support Converting Colors with the new Membership Option!

The pro membership hides all ads, plus gives you double the colors in the color bucket, and more awesome pro features!

[Learn more, Memberships starting at \\$2.50/m!](#)

**Follow me
on Twitter!**

@ConvertingColor