

Converting Colors

XYZ(53.7034, 53.7932, 60.5998)

Have a look what the booklet for
XYZ(53.7034, 53.7932, 60.5998)
contains.

XYZ(53.6683, 53.8373, 60.3863)	3
<i>Conversions</i>	4
<i>Details</i>	6
<i>Harmonies</i>	12
<i>Previews</i>	24
<i>Color Blindness Simulation</i>	28
<i>CSS Examples</i>	31

Color

**XYZ(53.6683, 53.8373,
60.3863)**

Conversions

Conversions Part 1

Format	Color
Hex	CDBEC5
RGB	205, 190, 197
RGB Percent	80%, 75%, 77%
CMY	0.1961, 0.2549, 0.2274
CMYK	0.00, 0.07, 0.04, 0.20
HSL	332°, 13%, 77%
HSV	332°, 7%, 80%
XYZ	53.6683, 53.8373, 60.3863
YIQ	195.2830, 6.6930, 5.3570

Conversions

Conversions Part 2

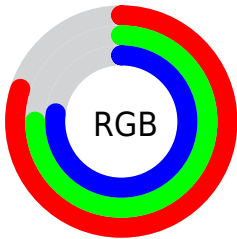
Format	Color
R_{YB}	205, 190, 197
Decimal	13483717
CIE Lab	78.37, 6.51, -1.62
CIE LCh	78, 6.711, 346.046
Yxy	53.8373, 0.3197, 0.3207
Android (android.graphics.Color)	4291673797 (0xFFCDBEC5)
YUV	195.2830, 0.8465, 8.5218
Hunter-Lab	73.3739, 2.1570, 2.5664

Details

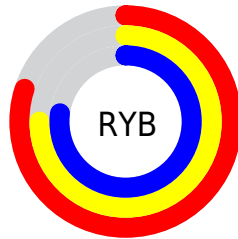
The XYZ color **53.6683, 53.8373, 60.3863** is a light color, and the websafe version is hex **CCCCCC**. A complement of this color would be **53.2616, 58.6883, 61.9497**, and the grayscale version is **52.0341, 54.7439, 59.6161**.

A 20% lighter version of the original color is **92.0852, 94.3273, 107.1195**, and **26.6661, 26.4538, 29.6872** is the 20% darker color. If you saturate the color by 10%, you get **48.3291, 45.0914, 52.6471**, and if you desaturate by 10%, it is **59.7260, 63.8733, 68.8149**.

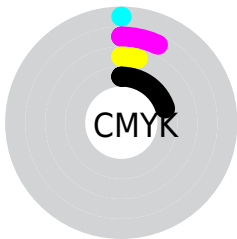
Distribution



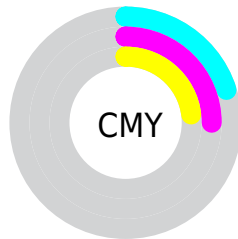
- Red (80%)
- Green (75%)
- Blue (77%)



- Red (80%)
- Yellow (75%)
- Blue (77%)



- Cyan (0%)
- Magenta (7%)
- Yellow (4%)
- Black (20%)



- Cyan (20%)
- Magenta (25%)
- Yellow (23%)

Brightness & Saturation Gradients

These gradients show how the XYZ color 53.6683, 53.8373, 60.3863 changes by changing the brightness by 10 percent. The first figure shows a shift by +10% for each color and the second figure -10%.

Similar to the brightness gradients but the following saturation gradients show a change of the XYZ color 53.6683, 53.8373, 60.3863 by changing the saturation by 10% instead.

■ 53.6683, 53.8373,
60.3863

■ 53.6683, 53.8373,
60.3863

391.0629,
401.4893, 443.8643

■ 38.5662, 38.4716,
43.3027

■ 94.7468, 95.8353,
106.9387

■ 26.6016, 26.3489,
29.7896

121.4538,
123.2364, 137.2446

■ 17.4093, 17.0848,
19.4282

152.7599,
155.4181, 172.7951

■ 10.6238, 10.2950,
11.8002

189.0304,
192.7648, 214.0086

■ 5.8799, 5.5950,
6.4869

230.6305,
235.6609, 261.3038

■ 2.8122, 2.6004,
3.0698

277.9258,

■ 1.0552, 0.9269,

284.4907, 315.0991

1.1304

331.2814,
339.6387, 375.8131

■ 0.0000, 0.0000,
0.0000

■ 53.6683, 53.8373,
60.3863

■ 53.6683, 53.8373,
60.3863

■ 48.3291, 45.0914,
52.6471

■ 59.7260, 63.8733,
68.8149

■ 43.6759, 37.5759,
45.5750

■ 66.5240, 75.2418,
77.9472

■ 39.6806, 31.2370,
39.1515

■ 74.0885, 87.9922,
87.8018

■ 36.3112, 26.0138,
33.3560

■ 76.7762, 90.8349,
96.5059

■ 33.5330, 21.8403,
28.1661

■ 78.4573, 91.5073,
105.3582

■ 31.3074, 18.6433,
23.5584

■ 78.9871, 91.7193,
108.1483

■ 29.5914, 16.3399,
19.5070

■ 28.3346, 14.8335,
15.9831

■ 27.4688, 13.9916,
12.9517

Harmonies

Analogous

The Analogous color harmony consists of three colors that are next to each other on the color wheel.



53.0158, 53.8373, 63.7998



53.6683, 53.8373, 60.3863



53.6436, 53.8373, 56.6375

Triad

The Triadic color harmony groups three colors that are evenly spaced from another and form a triangle on the color wheel.



53.6683, 53.8373, 60.3863



50.4739, 53.8373, 51.9214



49.4329, 53.8373, 63.9981

Complementary

The Complementary color scheme is a pair of colors which are on the opposite of each other on the color wheel.



53.6683, 53.8373, 60.3863



53.2616, 58.6883, 61.9497

Split Complementary

Split-complementary colors differ from the complementary color scheme. The scheme consists of three colors, the original color and two neighbors of the complement color.



48.7751, 53.8373, 60.6475



53.6683, 53.8373, 60.3863



49.3690, 53.8373, 53.7278

Square

The Square scheme is like the rectangle color scheme, but the four colors are evenly spaced on the color wheel.



53.6683, 53.8373, 60.3863



51.7839, 53.8373, 51.8582



48.7519, 53.8373, 56.8878



50.5624, 53.8373, 65.9447

Rectangle

The Rectangle color scheme consists of four colors that form a rectangle on the color wheel.



53.6683, 53.8373, 60.3863



53.2460, 53.8373, 54.4542



48.7519, 53.8373, 56.8878



49.1501, 53.8373, 62.9923

Sweetspot

The Sweet Spot groups the original color and five complimentary colors.



53.6698, 53.8396, 60.3875



93.0095, 96.6151, 106.0742



52.7236, 53.2431, 65.2563



19.9293, 20.7151, 22.7340



0.0000, 0.0000, 0.0000



20.3446, 21.4041, 23.3091

Same Dimension

The Same Dimension uses a secret algorithm to generate beautiful new colors.



53.6698, 53.8396, 60.3875



86.2517, 85.4578, 96.5509



52.9949, 53.7432, 56.2984



11.4265, 11.2993, 12.7804



17.0247, 8.6205, 7.8489



0.9165, 0.4600, 0.6061

Inverse Universe

The Inverse Universe completely reimagines the original color for something new.



53.6698, 53.8396, 60.3875



86.2517, 85.4578, 96.5509



53.9682, 58.7799, 66.2594



11.4265, 11.2993, 12.7804



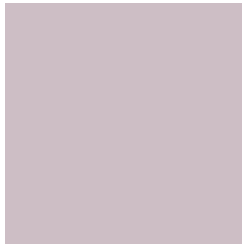
17.0247, 8.6205, 7.8489



0.9165, 0.4600, 0.6061

Previews

White Background



This preview shows how the XYZ color 53.6683, 53.8373, 60.3863 looks on a white background.

Color Contrast Check

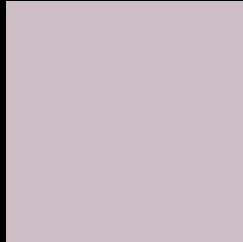
Large Text (above 18pt) WCAG AA × Fail

Any Text WCAG AA × Fail

Large Text (above 18pt) WCAG AAA × Fail

Any Text WCAG AAA × Fail

Black Background



This preview shows how the XYZ color 53.6683, 53.8373, 60.3863 looks on a black background.

Color Contrast Check

Large Text (above 18pt) WCAG AA ✓ Pass

Any Text WCAG AA ✓ Pass

Large Text (above 18pt) WCAG AAA ✓ Pass

Any Text WCAG AAA ✓ Pass

If you want to check with other color combinations, try the [Color Contrast Checker](#).

XYZ 53.6683, 53.8373, 60.3863

Background



This preview shows how black text looks on a background with the XYZ color 53.6683, 53.8373, 60.3863.



This preview shows how white text looks on a background with the XYZ color 53.6683, 53.8373,

Color Blindness Simulation

Color vision deficiency is a very complex topic, and I could not describe the different causes any better than Wikipedia does, so if you want to learn more, you should check out their [article about color blindness](#).

Dichromacy



Original Color

53.6683, 53.8373, 60.3863

Protanopia

52.1437, 53.9992, 61.7075

Deuteranopia

54.9252, 53.8465, 60.3219



Tritanopia

54.5503, 53.8766, 64.6509

Trichromacy



Original Color

53.6683, 53.8373, 60.3863

Protanomaly

52.5959, 53.9186, 61.0613

Deuteranomaly

54.5701, 53.9817, 60.3667

Tritanomaly

54.1938, 53.7340, 62.7737

Monochromacy



Original Color

53.6683, 53.8373, 60.3863

Achromatopsia

51.8711, 54.5724, 59.4294

Achromatomaly

52.5870, 54.2676, 59.9276

CSS Examples

Text

The CSS property to change the color of the text to XYZ 53.6683, 53.8373, 60.3863 is called "color". The color property can be set on classes, ids or directly on the HTML element.

This example shows how text in the color rgb(205, 190, 197) looks like.

```
.text, #text, p{  
    color:rgb(205, 190, 197)  
}
```

If you want to add a text shadow in that color use the text-shadow property, you can generate a text shadow directly with our [CSS Text Shadow Generator](#).

Here you see how black text with a 4 pixel rgb(205, 190, 197) colored shadow looks like.

```
.shadow{ text-shadow: 4px 4px 2px rgb(205, 190, 197) }
```

Border

The CSS property to change the border of an element to XYZ 53.6683, 53.8373, 60.3863 is called "border". The border property can be set on classes, ids or directly on the HTML element.

This example shows the color as border, it can be applied via the CSS property "border" or "border-color".

```
.border, #border, table{ border:4px solid rgb(205, 190, 197) }
```


If only the border color should be changed use the property `border-color`.

```
.border{ border-color:rgb(205, 190, 197) }
```

If you want to add a box shadow in that color use:

Here you see how a box with a 4 pixel `rgb(205, 190, 197)` colored shadow looks like.

```
.boxshadow{ -moz-box-shadow:4px 4px 4px  
4px rgb(205, 190, 197); -webkit-box-  
shadow:4px 4px 4px 4px rgb(205, 190, 197);  
box-shadow:4px 4px 4px 4px rgb(205, 190,  
197) }
```

Background

The CSS property to change the background color of an element to XYZ 53.6683, 53.8373, 60.3863 is called "background". The background property can be set on classes, ids or directly on the HTML element.

```
.background, #background, body{  
background: rgb(205, 190, 197) }
```

If only the background color should be changed can be used:

```
.background{ background-color: rgb(205,  
190, 197) }
```

This example shows the color as background, it is applied via the CSS property "background".

To optimize and compress your CSS code, you can use our [online CSS compressor and optimizer](#) based on csstidy. If you want to create a linear or radial gradient as background or border, check our [CSS Gradient Generator](#).

Hey! You found this booklet interesting? Support Converting Colors with the new Membership Option!

The pro membership hides all ads, plus gives you double the colors in the color bucket, and more awesome pro features!

[Learn more, Memberships starting at \\$2.50/m!](#)

**Follow me
on Twitter!**

@ConvertingColor