

Converting Colors

XYZ(53.8089, 52.9977, 50.0423)

Have a look what the booklet for
XYZ(53.8089, 52.9977, 50.0423)
contains.

XYZ(53.7199, 52.8196, 50.0117)	3
<i>Conversions</i>	4
<i>Details</i>	6
<i>Harmonies</i>	12
<i>Previews</i>	24
<i>Color Blindness Simulation</i>	28
<i>CSS Examples</i>	31

Color

**XYZ(53.7199, 52.8196,
50.0117)**

Conversions

Conversions Part 1

Format	Color
Hex	D7BAB3
RGB	215, 186, 179
RGB Percent	84%, 73%, 70%
CMY	0.1569, 0.2706, 0.2980
CMYK	0.00, 0.13, 0.17, 0.16
HSL	12°, 31%, 77%
HSV	12°, 17%, 84%
XYZ	53.7199, 52.8196, 50.0117
YIQ	193.8730, 19.5310, 3.9710

Conversions

Conversions Part 2

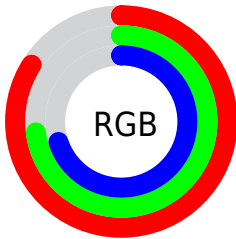
Format	Color
RYB	215, 188, 179
Decimal	14138035
CIELab	77.77, 9.22, 7.36
CIELCh	78, 11.799, 38.575
Yxy	52.8196, 0.3431, 0.3374
Android (android.graphics.Color)	4292328115 (0xFFD7BAB3)
YUV	193.8730, -7.3324, 18.5284
Hunter-Lab	72.6771, 4.7549, 10.0744

Details

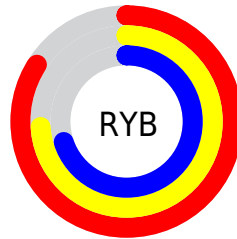
The XYZ color **53.7199, 52.8196, 50.0117** is a light color, and the websafe version is hex **FFCCCC**. A complement of this color would be **53.4115, 59.6002, 72.9792**, and the grayscale version is **51.2382, 53.9066, 58.7043**.

A 20% lighter version of the original color is **87.9875, 90.7624, 91.4787**, and **26.6506, 25.7550, 23.3052** is the 20% darker color. If you saturate the color by 10%, you get **48.2833, 45.1588, 38.2949**, and if you desaturate by 10%, it is **59.9407, 61.5051, 63.6638**.

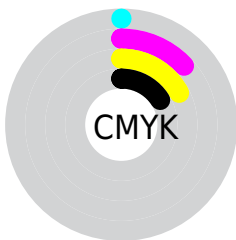
Distribution



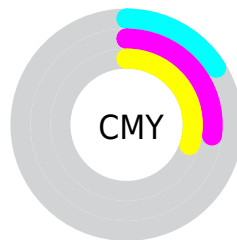
- Red (84%)
- Green (73%)
- Blue (70%)



- Red (84%)
- Yellow (74%)
- Blue (70%)



- Cyan (0%)
- Magenta (13%)
- Yellow (17%)
- Black (16%)





- Cyan (16%)
- Magenta (27%)
- Yellow (30%)

Brightness & Saturation Gradients


These gradients show how the XYZ color 53.7199, 52.8196, 50.0117 changes by changing the brightness by 10 percent. The first figure shows a shift by +10% for each color and the second figure -10%.


Similar to the brightness gradients but the following saturation gradients show a change of the XYZ color 53.7199, 52.8196, 50.0117 by changing the saturation by 10% instead.


 53.7199, 52.8196,
50.0117

 53.7199, 52.8196,
50.0117


391.2568,
397.5926, 403.4481

 38.6076, 37.6588,
35.0514


 94.8222, 94.3389,
91.5887

 26.6339, 25.7180,
23.4186


121.5428,
121.4661, 119.0425

 17.4336, 16.6128,
14.6947


152.8635,
153.3509, 151.4979

 10.6414, 9.9588,
8.4612

189.1498,
190.3777, 189.3735

 5.8917, 5.3716,
4.2995

230.7669,
232.9309, 233.0878

 2.8194, 2.4669,
1.7910

278.0802,

 1.0590, 0.8600,

281.3948, 283.0593

0.4220

331.4550,
336.1539, 339.7065

0.0000, 0.0000,
0.0000

53.7199, 52.8196,
50.0117

53.7199, 52.8196,
50.0117

48.2833, 45.1588,
38.2949

59.9407, 61.5051,
63.6638

43.5950, 38.4777,
28.4223

66.9708, 71.2438,
79.3300

39.6230, 32.7388,
20.3004

74.8398, 82.0722,
97.0887

36.3311, 27.8990,
13.8264

81.8345, 93.1871,
108.2815

33.6797, 23.9121,
8.8863

■ 31.6253, 20.7277,
5.3517

■ 30.1182, 18.2895,
3.0731

■ 29.0982, 16.5333,
1.8586

■ 28.8464, 16.0911,
1.5855

Harmonies

Analogous

The Analogous color harmony consists of three colors that are next to each other on the color wheel.



54.6778, 52.8196, 55.6543



53.7199, 52.8196, 50.0117



51.8267, 52.8196, 46.5679

Triad

The Triadic color harmony groups three colors that are evenly spaced from another and form a triangle on the color wheel.



53.7199, 52.8196, 50.0117



46.2207, 52.8196, 53.0334



50.8619, 52.8196, 70.8832

Complementary

The Complementary color scheme is a pair of colors which are on the opposite of each other on the color wheel.



53.7199, 52.8196, 50.0117



53.4115, 59.6002, 72.9792

Split Complementary

Split-complementary colors differ from the complementary color scheme. The scheme consists of three colors, the original color and two neighbors of the complement color.



48.6144, 52.8196, 70.0481



53.7199, 52.8196, 50.0117



45.9801, 52.8196, 59.4097

Square

The Square scheme is like the rectangle color scheme, but the four colors are evenly spaced on the color wheel.



53.7199, 52.8196, 50.0117



47.5114, 52.8196, 48.2181



46.8439, 52.8196, 65.7261



52.9953, 52.8196, 67.9284

Rectangle

The Rectangle color scheme consists of four colors that form a rectangle on the color wheel.



53.7199, 52.8196, 50.0117



50.3129, 52.8196, 45.8194



46.8439, 52.8196, 65.7261



50.0942, 52.8196, 71.0407

Sweetspot

The Sweet Spot groups the original color and five complimentary colors.



53.7213, 52.8220, 50.0128



89.8756, 92.8278, 97.3820



55.5794, 51.2617, 66.8984



19.0867, 19.6601, 20.5104



0.0000, 0.0000, 0.0000



20.3446, 21.4041, 23.3091

Same Dimension

The Same Dimension uses a secret algorithm to generate beautiful new colors.



53.7213, 52.8220, 50.0128



76.1661, 73.6736, 67.3328



57.6594, 60.6981, 51.3255



12.6169, 12.8080, 12.9679



17.3125, 9.7422, 0.9680



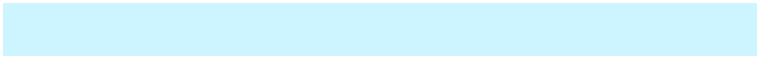
1.1025, 0.7043, 0.0778

Inverse Universe

The Inverse Universe completely reimagines the original color for something new.



53.4115, 59.6002, 72.9792



75.6277, 85.4090, 107.1073



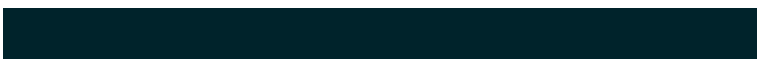
49.3570, 51.4911, 71.6277



12.5773, 13.6781, 15.9148



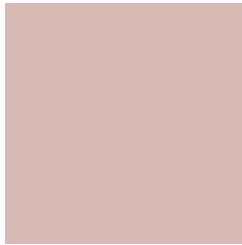
16.3689, 20.9996, 41.6437



1.0411, 1.3741, 2.5297

Previews

White Background



This preview shows how the XYZ color 53.7199, 52.8196, 50.0117 looks on a white background.

Color Contrast Check

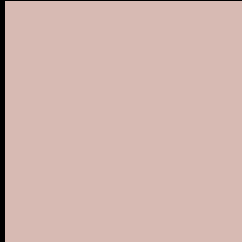
Large Text (above 18pt) WCAG AA × Fail

Any Text WCAG AA × Fail

Large Text (above 18pt) WCAG AAA × Fail

Any Text WCAG AAA × Fail

Black Background



This preview shows how the XYZ color 53.7199, 52.8196, 50.0117 looks on a black background.

Color Contrast Check

Large Text (above 18pt) WCAG AA ✓ Pass

Any Text WCAG AA ✓ Pass

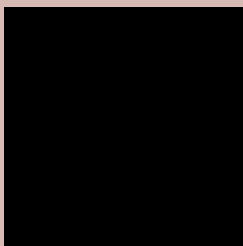
Large Text (above 18pt) WCAG AAA ✓ Pass

Any Text WCAG AAA ✓ Pass

If you want to check with other color combinations, try the [Color Contrast Checker](#).

XYZ 53.7199, 52.8196, 50.0117

Background



This preview shows how black text looks on a background with the XYZ color 53.7199, 52.8196, 50.0117.



This preview shows how white text looks on a background with the XYZ color 53.7199, 52.8196,

Color Blindness Simulation

Color vision deficiency is a very complex topic, and I could not describe the different causes any better than Wikipedia does, so if you want to learn more, you should check out their [article about color blindness](#).

Dichromacy



Original Color

53.7199, 52.8196, 50.0117

Protanopia

50.5818, 53.0824, 51.8360

Deuteranopia

54.0145, 52.9714, 50.0255



Tritanopia

55.6268, 52.6499, 60.0539

Trichromacy



Original Color

53.7199, 52.8196, 50.0117

Protanomaly

51.6558, 53.0005, 51.2236

Deuteranomaly

54.0145, 52.9714, 50.0255

Tritanomaly

54.7537, 52.5976, 55.9817

Monochromacy



Original Color

53.7199, 52.8196, 50.0117

Achromatopsia

51.2775, 53.9479, 58.7493

Achromatomaly

52.1732, 53.4923, 55.7193

CSS Examples

Text

The CSS property to change the color of the text to XYZ 53.7199, 52.8196, 50.0117 is called "color". The color property can be set on classes, ids or directly on the HTML element.

This example shows how text in the color `rgb(215, 186, 179)` looks like.

```
.text, #text, p{  
    color:rgb(215, 186, 179)  
}
```

If you want to add a text shadow in that color use the text-shadow property, you can generate a text shadow directly with our [CSS Text Shadow Generator](#).

Here you see how black text with a 4 pixel rgb(215, 186, 179) colored shadow looks like.

```
.shadow{ text-shadow: 4px 4px 2px rgb(215, 186, 179) }
```

Border

The CSS property to change the border of an element to XYZ 53.7199, 52.8196, 50.0117 is called "border". The border property can be set on classes, ids or directly on the HTML element.

This example shows the color as border, it can be applied via the CSS property "border" or "border-color".

```
.border, #border, table{ border:4px solid rgb(215, 186, 179) }
```


If only the border color should be changed use the property `border-color`.

```
.border{ border-color:rgb(215, 186, 179) }
```

If you want to add a box shadow in that color use:

Here you see how a box with a 4 pixel `rgb(215, 186, 179)` colored shadow looks like.

```
.boxshadow{ -moz-box-shadow:4px 4px 4px  
4px rgb(215, 186, 179); -webkit-box-  
shadow:4px 4px 4px 4px rgb(215, 186, 179);  
box-shadow:4px 4px 4px 4px rgb(215, 186,  
179) }
```

Background

The CSS property to change the background color of an element to XYZ 53.7199, 52.8196, 50.0117 is called "background". The background property can be set on classes, ids or directly on the HTML element.

```
.background, #background, body{  
background: rgb(215, 186, 179) }
```

If only the background color should be changed can be used:

```
.background{ background-color: rgb(215,  
186, 179) }
```

This example shows the color as background, it is applied via the CSS property "background".

To optimize and compress your CSS code, you can use our [online CSS compressor and optimizer](#) based on csstidy. If you want to create a linear or radial gradient as background or border, check our [CSS Gradient Generator](#).

Hey! You found this booklet interesting? Support Converting Colors with the new Membership Option!

The pro membership hides all ads, plus gives you double the colors in the color bucket, and more awesome pro features!

[Learn more, Memberships starting at \\$2.50/m!](#)

**Follow me
on Twitter!**

@ConvertingColor