

Converting Colors

XYZ(53.8273, 52.7070, 51.0554)

Have a look what the booklet for
XYZ(53.8273, 52.7070, 51.0554)
contains.

XYZ(53.9237, 52.9011, 51.0849)	3
<i>Conversions</i>	4
<i>Details</i>	6
<i>Harmonies</i>	12
<i>Previews</i>	24
<i>Color Blindness Simulation</i>	28
<i>CSS Examples</i>	31

Color

**XYZ(53.9237, 52.9011,
51.0849)**

Conversions

Conversions Part 1

Format	Color
Hex	D7BAB5
RGB	215, 186, 181
RGB Percent	84%, 73%, 71%
CMY	0.1569, 0.2706, 0.2902
CMYK	0.00, 0.13, 0.16, 0.16
HSL	9°, 30%, 78%
HSV	9°, 16%, 84%
XYZ	53.9237, 52.9011, 51.0849
YIQ	194.1010, 18.8890, 4.5930

Conversions

Conversions Part 2

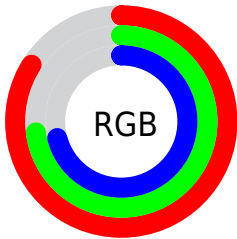
Format	Color
R _Y B	215, 187, 181
Decimal	14138037
CIE Lab	77.82, 9.54, 6.34
CIE LCh	78, 11.456, 33.628
Yxy	52.9011, 0.3415, 0.3350
Android (android.graphics.Color)	4292328117 (0xFFD7BAB5)
YUV	194.1010, -6.4588, 18.3284
Hunter-Lab	72.7331, 5.0553, 9.2702

Details

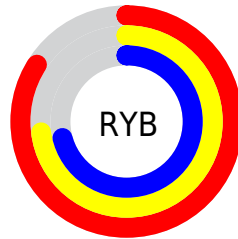
The XYZ color **53.9237, 52.9011, 51.0849** is a light color, and the websafe version is hex **FFCCCC**. A complement of this color would be **54.3679, 60.8217, 73.1646**, and the grayscale version is **51.3684, 54.0435, 58.8534**.

A 20% lighter version of the original color is **88.2782, 90.8787, 93.0093**, and **26.7810, 25.8072, 23.9918** is the 20% darker color. If you saturate the color by 10%, you get **48.2678, 44.8512, 39.1426**, and if you desaturate by 10%, it is **60.4187, 62.0832, 64.9877**.

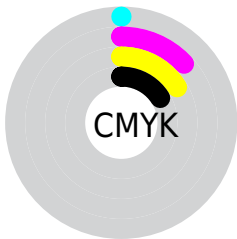
Distribution



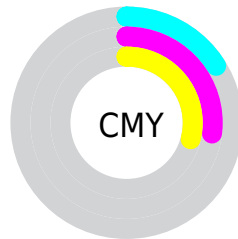
- Red (84%)
- Green (73%)
- Blue (71%)



- Red (84%)
- Yellow (73%)
- Blue (71%)



- Cyan (0%)
- Magenta (13%)
- Yellow (16%)
- Black (16%)




- Cyan (16%)
- Magenta (27%)
- Yellow (29%)

Brightness & Saturation Gradients


These gradients show how the XYZ color 53.9237, 52.9011, 51.0849 changes by changing the brightness by 10 percent. The first figure shows a shift by +10% for each color and the second figure -10%.


Similar to the brightness gradients but the following saturation gradients show a change of the XYZ color 53.9237, 52.9011, 51.0849 by changing the saturation by 10% instead.


 53.9237, 52.9011,
51.0849

 53.9237, 52.9011,
51.0849


392.0221,
397.9056, 407.7495

 38.7711, 37.7238,
35.8990


 95.1198, 94.4588,
93.1930

 26.7616, 25.7684,
24.0671


121.8939,
121.6081, 120.9524

 17.5299, 16.6505,
15.1708


153.2726,
153.5167, 153.7399

 10.7107, 9.9856,
8.7914

189.6213,
190.5692, 191.9741

 5.9385, 5.3894,
4.5104

231.3052,
233.1500, 236.0737

 2.8480, 2.4775,
1.9093

278.6897,

 1.0739, 0.8653,

281.6434, 286.4571

0.4987

332.1402,
336.4338, 343.5428

■ 0.0031, 0.0000,
0.0000

■ 0.0000, 0.0000,
0.0000

■ 53.9237, 52.9011,
51.0849

■ 53.9237, 52.9011,
51.0849

■ 48.2678, 44.8512,
39.1426

■ 60.4187, 62.0832,
64.9877

■ 43.4124, 37.8829,
29.0693

■ 67.7806, 72.4318,
80.9304

■ 39.3222, 31.9520,
20.7711

■ 76.0416, 83.9883,
98.9917

■ 35.9577, 27.0085,
14.1447

■ 81.8345, 93.1872,
108.2815

■ 33.2756, 22.9985,
9.0761

■ 31.2282, 19.8628,
5.4369

■ 29.7610, 17.5350,
3.0781

■ 28.8099, 15.9390,
1.8166

■ 28.5315, 15.4611,
1.4805

Harmonies

Analogous

The Analogous color harmony consists of three colors that are next to each other on the color wheel.



54.6674, 52.9011, 56.8293



53.9237, 52.9011, 51.0849



52.2031, 52.9011, 47.3164

Triad

The Triadic color harmony groups three colors that are evenly spaced from another and form a triangle on the color wheel.



53.9237, 52.9011, 51.0849



46.5486, 52.9011, 52.3333



50.5518, 52.9011, 70.6980

Complementary

The Complementary color scheme is a pair of colors which are on the opposite of each other on the color wheel.



53.9237, 52.9011, 51.0849



54.3679, 60.8217, 73.1646

Split Complementary

Split-complementary colors differ from the complementary color scheme. The scheme consists of three colors, the original color and two neighbors of the complement color.



48.4065, 52.9011, 69.2757



53.9237, 52.9011, 51.0849



46.1356, 52.9011, 58.3783

Square

The Square scheme is like the rectangle color scheme, but the four colors are evenly spaced on the color wheel.



53.9237, 52.9011, 51.0849



47.9512, 52.9011, 47.9990



46.8060, 52.9011, 64.6474



52.6848, 52.9011, 68.4035

Rectangle

The Rectangle color scheme consists of four colors that form a rectangle on the color wheel.



53.9237, 52.9011, 51.0849



50.7566, 52.9011, 46.2734



46.8060, 52.9011, 64.6474



49.8082, 52.9011, 70.6395

Sweetspot

The Sweet Spot groups the original color and five complimentary colors.



53.9252, 52.9035, 51.0860



89.6934, 92.4634, 97.3213



56.2398, 52.1719, 68.3845



19.0426, 19.5718, 20.4957



0.0000, 0.0000, 0.0000



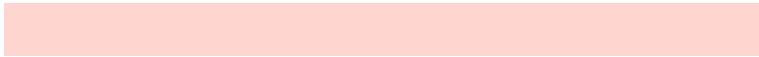
20.3446, 21.4041, 23.3091

Same Dimension

The Same Dimension uses a secret algorithm to generate beautiful new colors.



53.9252, 52.9035, 51.0860



76.4134, 73.6748, 68.9367



57.6112, 60.2756, 52.3147



12.5693, 12.7128, 12.9520



17.1127, 9.3426, 0.9014



1.0803, 0.6597, 0.0704

Inverse Universe

The Inverse Universe completely reimagines the original color for something new.



54.3679, 60.8217, 73.1646



77.1838, 87.4750, 107.4241



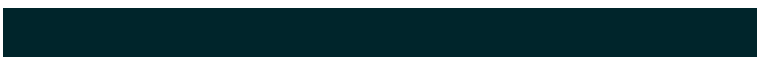
50.4957, 53.0773, 71.8739



12.6292, 13.7818, 15.9320



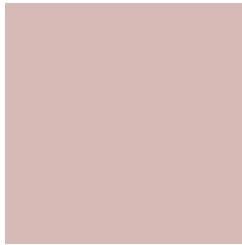
17.5698, 23.4013, 42.0440



1.1031, 1.4983, 2.5504

Previews

White Background



This preview shows how the XYZ color 53.9237, 52.9011, 51.0849 looks on a white background.

Color Contrast Check

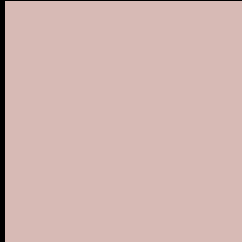
Large Text (above 18pt) WCAG AA × Fail

Any Text WCAG AA × Fail

Large Text (above 18pt) WCAG AAA × Fail

Any Text WCAG AAA × Fail

Black Background



This preview shows how the XYZ color 53.9237, 52.9011, 51.0849 looks on a black background.

Color Contrast Check

Large Text (above 18pt) WCAG AA ✓ Pass

Any Text WCAG AA ✓ Pass

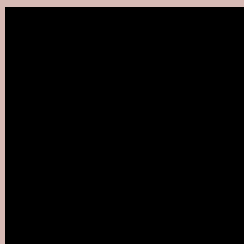
Large Text (above 18pt) WCAG AAA ✓ Pass

Any Text WCAG AAA ✓ Pass

If you want to check with other color combinations, try the [Color Contrast Checker](#).

XYZ 53.9237, 52.9011, 51.0849

Background



This preview shows how black text looks on a background with the XYZ color 53.9237, 52.9011, 51.0849.



This preview shows how white text looks on a background with the XYZ color 53.9237, 52.9011,

Color Blindness Simulation

Color vision deficiency is a very complex topic, and I could not describe the different causes any better than Wikipedia does, so if you want to learn more, you should check out their [article about color blindness](#).

Dichromacy



Original Color

53.9237, 52.9011, 51.0849

Protanopia

50.7901, 53.1657, 52.9325

Deuteranopia

53.9237, 52.9011, 51.0849



Tritanopia

55.7418, 52.6959, 60.6595

Trichromacy



Original Color

53.9237, 52.9011, 51.0849

Protanomaly

51.8625, 53.0832, 52.3124

Deuteranomaly

53.9237, 52.9011, 51.0849

Tritanomaly

54.9738, 52.6857, 57.1411

Monochromacy



Original Color

53.9237, 52.9011, 51.0849

Achromatopsia

51.2775, 53.9479, 58.7493

Achromatomaly

52.1732, 53.4923, 55.7193

CSS Examples

Text

The CSS property to change the color of the text to XYZ 53.9237, 52.9011, 51.0849 is called "color". The color property can be set on classes, ids or directly on the HTML element.

This example shows how text in the color rgb(215, 186, 181) looks like.

```
.text, #text, p{  
    color:rgb(215, 186, 181)  
}
```

If you want to add a text shadow in that color use the text-shadow property, you can generate a text shadow directly with our [CSS Text Shadow Generator](#).

Here you see how black text with a 4 pixel rgb(215, 186, 181) colored shadow looks like.

```
.shadow{ text-shadow: 4px 4px 2px rgb(215, 186, 181) }
```

Border

The CSS property to change the border of an element to XYZ 53.9237, 52.9011, 51.0849 is called "border". The border property can be set on classes, ids or directly on the HTML element.

This example shows the color as border, it can be applied via the CSS property "border" or "border-color".

```
.border, #border, table{ border:4px solid rgb(215, 186, 181) }
```


If only the border color should be changed use the property `border-color`.

```
.border{ border-color:rgb(215, 186, 181) }
```

If you want to add a box shadow in that color use:

Here you see how a box with a 4 pixel `rgb(215, 186, 181)` colored shadow looks like.

```
.boxshadow{ -moz-box-shadow:4px 4px 4px  
4px rgb(215, 186, 181); -webkit-box-  
shadow:4px 4px 4px 4px rgb(215, 186, 181);  
box-shadow:4px 4px 4px 4px rgb(215, 186,  
181) }
```

Background

The CSS property to change the background color of an element to XYZ 53.9237, 52.9011, 51.0849 is called "background". The background property can be set on classes, ids or directly on the HTML element.

```
.background, #background, body{  
background: rgb(215, 186, 181) }
```

If only the background color should be changed can be used:

```
.background{ background-color: rgb(215,  
186, 181) }
```

This example shows the color as background, it is applied via the CSS property "background".

To optimize and compress your CSS code, you can use our [online CSS compressor and optimizer](#) based on csstidy. If you want to create a linear or radial gradient as background or border, check our [CSS Gradient Generator](#).

Hey! You found this booklet interesting? Support Converting Colors with the new Membership Option!

The pro membership hides all ads, plus gives you double the colors in the color bucket, and more awesome pro features!

[Learn more, Memberships starting at \\$2.50/m!](#)

**Follow me
on Twitter!**

@ConvertingColor