

# Converting Colors

XYZ(53.8395, 53.2552, 61.2018)

Have a look what the booklet for  
XYZ(53.8395, 53.2552, 61.2018)  
contains.

<b>XYZ(54.0241, 53.3554, 61.4841)</b> .....	3
<b><i>Conversions</i></b> .....	4
<b><i>Details</i></b> .....	6
<b><i>Harmonies</i></b> .....	12
<b><i>Previews</i></b> .....	24
<b><i>Color Blindness Simulation</i></b> .....	28
<b><i>CSS Examples</i></b> .....	31

# Color

**XYZ(54.0241, 53.3554,  
61.4841)**

# Conversions

## Conversions Part 1

Format	Color
Hex	CFBCC7
RGB	207, 188, 199
RGB Percent	81%, 74%, 78%
CMY	0.1882, 0.2627, 0.2196
CMYK	0.00, 0.09, 0.04, 0.19
HSL	325°, 17%, 77%
HSV	325°, 9%, 81%
XYZ	54.0241, 53.3554, 61.4841
YIQ	194.9350, 7.7930, 7.4490

# Conversions

## Conversions Part 2

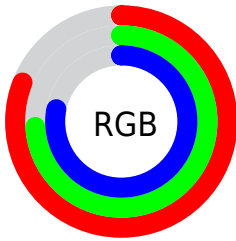
Format	Color
R <sub>Y</sub> B	207, 188, 199
Decimal	13614279
CIE Lab	78.08, 8.64, -3.09
CIE LCh	78, 9.179, 340.294
Yxy	53.3554, 0.3199, 0.3160
Android (android.graphics.Color)	4291804359 (0xFFCFBCC7)
YUV	194.9350, 2.0040, 10.5810
Hunter-Lab	73.0448, 4.1907, 1.2251

# Details

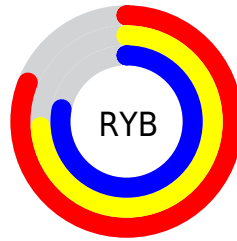
The XYZ color **54.0241, 53.3554, 61.4841** is a light color, and the websafe version is hex **CCCCCC**. A complement of this color would be **53.0177, 59.3038, 60.8798**, and the grayscale version is **51.8196, 54.5182, 59.3703**.

A 20% lighter version of the original color is **91.6407, 93.1814, 107.7636**, and **26.9117, 26.1446, 30.4161** is the 20% darker color. If you saturate the color by 10%, you get **48.9324, 44.7450, 54.9358**, and if you desaturate by 10%, it is **59.8111, 63.2621, 68.5516**.

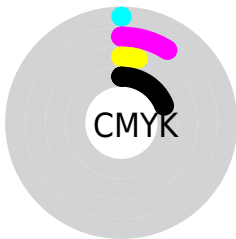
# Distribution



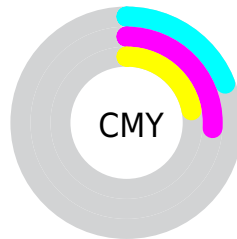
- Red (81%)
- Green (74%)
- Blue (78%)



- Red (81%)
- Yellow (74%)
- Blue (78%)



- Cyan (0%)
- Magenta (9%)
- Yellow (4%)
- Black (19%)



- Cyan (19%)
- Magenta (26%)
- Yellow (22%)

# Brightness & Saturation Gradients

These gradients show how the XYZ color 54.0241, 53.3554, 61.4841 changes by changing the brightness by 10 percent. The first figure shows a shift by +10% for each color and the second figure -10%.

Similar to the brightness gradients but the following saturation gradients show a change of the XYZ color 54.0241, 53.3554, 61.4841 by changing the saturation by 10% instead.



■ 54.0241, 53.3554,  
61.4841

■ 54.0241, 53.3554,  
61.4841

392.3988,  
399.6472, 448.0024

■ 38.8517, 38.0866,  
44.1829

■ 95.2663, 95.1271,  
108.5439

■ 26.8246, 26.0499,  
30.4761

122.0668,  
122.3988, 139.1396

■ 17.5774, 16.8610,  
19.9451

153.4741,  
154.4402, 175.0038

■ 10.7449, 10.1354,  
12.1715

189.8534,  
191.6358, 216.5552

■ 5.9616, 5.4888,  
6.7366

231.5702,  
234.3698, 264.2121

■ 2.8622, 2.5368,  
3.2220

278.9898,

■ 1.0813, 0.8950,

283.0268, 318.3933

1.2091

332.4775,  
337.9911, 379.5172

■ 0.0094, 0.0000,  
0.0000

■ 0.0000, 0.0000,  
0.0000

■ 54.0241, 53.3554,  
61.4841

■ 54.0241, 53.3554,  
61.4841

■ 48.9324, 44.7450,  
54.9358

■ 59.8111, 63.2621,  
68.5516

■ 44.5035, 37.3698,  
48.8891

■ 66.3151, 74.5091,  
76.1481

■ 40.7093, 31.1742,  
43.3305

■ 73.5622, 87.1468,  
84.2876

■ 37.5176, 26.0956,  
38.2442

■ 76.3250, 90.7186,  
91.2320

■ 34.8933, 22.0653,  
33.6134

■ 77.6078, 91.2317,  
97.9870

■ 32.7975, 19.0074,  
29.4198

■ 78.9531, 91.7698,  
105.0710

■ 31.1861, 16.8353,  
25.6432

■ 79.5424, 92.0055,  
108.1743

■ 30.0070, 15.4469,  
22.2608

■ 29.1743, 14.6719,  
19.2378

# Harmonies

## Analogous

The Analogous color harmony consists of three colors that are next to each other on the color wheel.



52.9724, 53.3554, 65.9462



54.0241, 53.3554, 61.4841



54.1768, 53.3554, 56.3503

# Triad

The Triadic color harmony groups three colors that are evenly spaced from another and form a triangle on the color wheel.



54.0241, 53.3554, 61.4841



50.0998, 53.3554, 48.9220



48.1313, 53.3554, 64.7090

# Complementary

The Complementary color scheme is a pair of colors which are on the opposite of each other on the color wheel.



54.0241, 53.3554, 61.4841



53.0177, 59.3038, 60.8798

# Split Complementary

Split-complementary colors differ from the complementary color scheme. The scheme consists of three colors, the original color and two neighbors of the complement color.



47.3995, 53.3554, 59.8752



54.0241, 53.3554, 61.4841



48.5182, 53.3554, 50.8930

# Square

The Square scheme is like the rectangle color scheme, but the four colors are evenly spaced on the color wheel.



54.0241, 53.3554, 61.4841



51.8827, 53.3554, 49.2964



47.5395, 53.3554, 54.8327



49.5605, 53.3554, 67.8827



# Rectangle

The Rectangle color scheme consists of four colors that form a rectangle on the color wheel.



54.0241, 53.3554, 61.4841



53.7444, 53.3554, 53.2608



47.5395, 53.3554, 54.8327



47.7972, 53.3554, 63.2131

# Sweetspot

The Sweet Spot groups the original color and five complimentary colors.



54.0256, 53.3577, 61.4852



92.1435, 95.0100, 105.3938



51.9910, 52.1987, 66.3672



19.5600, 20.0577, 22.3608



0.0000, 0.0000, 0.0000



20.3446, 21.4041, 23.3091



# Same Dimension

The Same Dimension uses a secret algorithm to generate beautiful new colors.



54.0256, 53.3577, 61.4852



84.9014, 82.6532, 96.4215



52.9660, 52.9339, 55.9051



12.0915, 11.9213, 13.7577



18.3900, 9.2288, 12.2256



1.0674, 0.5317, 0.8898



# Inverse Universe

The Inverse Universe completely reimagines the original color for something new.



54.0256, 53.3577, 61.4852



84.9014, 82.6532, 96.4215



54.1233, 59.7461, 66.7020



12.0915, 11.9213, 13.7577



18.3900, 9.2288, 12.2256

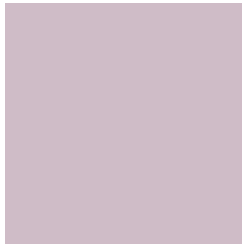


1.0674, 0.5317, 0.8898



# Previews

## White Background



This preview shows how the XYZ color 54.0241, 53.3554, 61.4841 looks on a white background.

## Color Contrast Check

Large Text (above 18pt) WCAG AA × Fail

Any Text WCAG AA × Fail

Large Text (above 18pt) WCAG AAA × Fail

Any Text WCAG AAA × Fail



# Black Background



This preview shows how the XYZ color 54.0241, 53.3554, 61.4841 looks on a black background.

## Color Contrast Check

Large Text (above 18pt) WCAG AA ✓ Pass

Any Text WCAG AA ✓ Pass

Large Text (above 18pt) WCAG AAA ✓ Pass

Any Text WCAG AAA ✓ Pass

If you want to check with other color combinations, try the [Color Contrast Checker](#).

**XYZ 54.0241, 53.3554, 61.4841**

## **Background**



This preview shows how black text looks on a background with the XYZ color 54.0241, 53.3554, 61.4841.



This preview shows how white text looks on a background with the XYZ color 54.0241, 53.3554,



# Color Blindness Simulation

Color vision deficiency is a very complex topic, and I could not describe the different causes any better than Wikipedia does, so if you want to learn more, you should check out their [article about color blindness](#).

## Dichromacy



### Original Color

54.0241, 53.3554, 61.4841

### Protanopia

51.6404, 53.3857, 62.8411

### Deuteranopia

54.3736, 53.2195, 61.4394



## Tritanopia

54.1631, 53.0703, 63.2660

# Trichromacy



## Original Color

54.0241, 53.3554, 61.4841

## Protanomaly

52.6093, 53.5738, 62.2116

## Deuteranomaly

54.0916, 53.0741, 61.4262

## Tritanomaly

54.0451, 53.0231, 62.6443

# Monochromacy



## Original Color

54.0241, 53.3554, 61.4841

## Achromatopsia

51.8711, 54.5724, 59.4294

## Achromatomaly

52.3666, 53.8269, 59.8542

# CSS Examples

## Text

The CSS property to change the color of the text to XYZ 54.0241, 53.3554, 61.4841 is called "color". The color property can be set on classes, ids or directly on the HTML element.

This example shows how text in the color rgb(207, 188, 199) looks like.

```
.text, #text, p{  
    color:rgb(207, 188, 199)  
}
```

If you want to add a text shadow in that color use the text-shadow property, you can generate a text shadow directly with our [CSS Text Shadow Generator](#).

Here you see how black text with a 4 pixel rgb(207, 188, 199) colored shadow looks like.

```
.shadow{ text-shadow: 4px 4px 2px rgb(207, 188, 199) }
```

## Border

The CSS property to change the border of an element to XYZ 54.0241, 53.3554, 61.4841 is called "border". The border property can be set on classes, ids or directly on the HTML element.

This example shows the color as border, it can be applied via the CSS property "border" or "border-color".

```
.border, #border, table{ border:4px solid rgb(207, 188, 199) }
```



If only the border color should be changed use the property border-color.

```
.border{ border-color:rgb(207, 188, 199) }
```

If you want to add a box shadow in that color use:

Here you see how a box with a 4 pixel rgb(207, 188, 199) colored shadow looks like.

```
.boxshadow{ -moz-box-shadow:4px 4px 4px  
4px rgb(207, 188, 199); -webkit-box-  
shadow:4px 4px 4px 4px rgb(207, 188, 199);  
box-shadow:4px 4px 4px 4px rgb(207, 188,  
199) }
```

# Background

The CSS property to change the background color of an element to XYZ 54.0241, 53.3554, 61.4841 is called "background". The background property can be set on classes, ids or directly on the HTML element.

```
.background, #background, body{  
background: rgb(207, 188, 199) }
```

If only the background color should be changed can be used:

```
.background{ background-color: rgb(207,  
188, 199) }
```

This example shows the color as background, it is applied via the CSS property "background".

To optimize and compress your CSS code, you can use our [online CSS compressor and optimizer](#) based on csstidy. If you want to create a linear or radial gradient as background or border, check our [CSS Gradient Generator](#).

Hey! You found this booklet interesting? Support Converting Colors with the new Membership Option!

The pro membership hides all ads, plus gives you double the colors in the color bucket, and more awesome pro features!

**[Learn more, Memberships starting at \\$2.50/m!](#)**

**Follow me  
on Twitter!**

@ConvertingColor