

Converting Colors

XYZ(53.8614, 52.9737, 51.6739)

Have a look what the booklet for
XYZ(53.8614, 52.9737, 51.6739)
contains.

XYZ(53.7340, 52.7914, 51.6136)	3
<i>Conversions</i>	4
<i>Details</i>	6
<i>Harmonies</i>	12
<i>Previews</i>	24
<i>Color Blindness Simulation</i>	28
<i>CSS Examples</i>	31

Color

**XYZ(53.7340, 52.7914,
51.6136)**

Conversions

Conversions Part 1

Format	Color
Hex	D6BAB6
RGB	214, 186, 182
RGB Percent	84%, 73%, 71%
CMY	0.1608, 0.2706, 0.2863
CMYK	0.00, 0.13, 0.15, 0.16
HSL	8°, 28%, 78%
HSV	8°, 15%, 84%
XYZ	53.7340, 52.7914, 51.6136
YIQ	193.9160, 17.9720, 4.6920

Conversions

Conversions Part 2

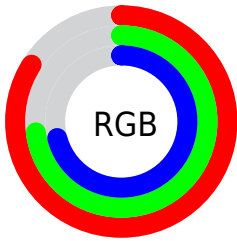
Format	Color
RYB	214, 187, 182
Decimal	14072502
CIELab	77.75, 9.33, 5.70
CIELCh	78, 10.935, 31.407
Yxy	52.7914, 0.3398, 0.3338
Android (android.graphics.Color)	4292262582 (0xFFD6BAB6)
YUV	193.9160, -5.8746, 17.6137
Hunter-Lab	72.6577, 4.8587, 8.7427

Details

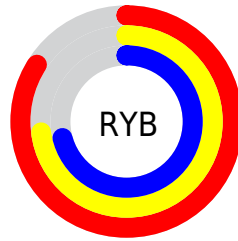
The XYZ color **53.7340, 52.7914, 51.6136** is a light color, and the websafe version is hex **CCCCCC**. A complement of this color would be **54.4752, 60.8920, 72.5011**, and the grayscale version is **51.2559, 53.9252, 58.7246**.

A 20% lighter version of the original color is **88.4247, 90.9373, 93.7811**, and **26.6481, 25.7310, 24.3309** is the 20% darker color. If you saturate the color by 10%, you get **48.0003, 44.5966, 39.6122**, and if you desaturate by 10%, it is **60.3254, 62.1597, 65.5695**.

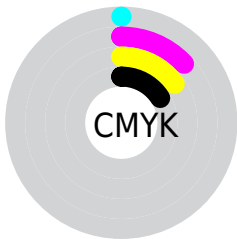
Distribution



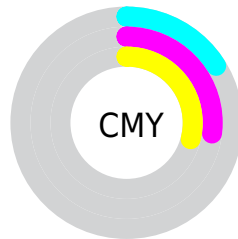
- Red (84%)
- Green (73%)
- Blue (71%)



- Red (84%)
- Yellow (73%)
- Blue (71%)



- Cyan (0%)
- Magenta (13%)
- Yellow (15%)
- Black (16%)





- Cyan (16%)
- Magenta (27%)
- Yellow (29%)

Brightness & Saturation Gradients


These gradients show how the XYZ color 53.7340, 52.7914, 51.6136 changes by changing the brightness by 10 percent. The first figure shows a shift by +10% for each color and the second figure -10%.


Similar to the brightness gradients but the following saturation gradients show a change of the XYZ color 53.7340, 52.7914, 51.6136 by changing the saturation by 10% instead.

 53.7340, 52.7914,
51.6136

 53.7340, 52.7914,
51.6136


391.3098,
397.4843, 409.8575

 38.6189, 37.6363,
36.3171

 94.8428, 94.2973,
93.9819

 26.6427, 25.7005,
24.3875


121.5671,
121.4170, 121.8907

 17.4403, 16.5997,
15.4065


152.8919,
153.2935, 154.8408

 10.6461, 9.9495,
8.9554

189.1824,
190.3114, 193.2505

 5.8950, 5.3655,
4.6157

230.8041,
232.8550, 237.5385

 2.8214, 2.4633,
1.9688

278.1224,

 1.0600, 0.8582,

281.3088, 288.1233

0.5360

331.5025,
336.0571, 345.4235

0.0000, 0.0000,
0.0000

53.7340, 52.7914,
51.6136

53.7340, 52.7914,
51.6136

48.0003, 44.5966,
39.6122

60.3254, 62.1597,
65.5695

43.0848, 37.5223,
29.4749

67.8034, 72.7378,
81.5584

38.9511, 31.5218,
21.1090

76.2008, 84.5694,
99.6584

35.5587, 26.5424,
14.4124

81.5418, 93.0363,
108.2678

32.8632, 22.5269,
9.2728

■ 30.8152, 19.4126,
5.5639

■ 29.3590, 17.1292,
3.1397

■ 28.4288, 15.5955,
1.8224

■ 28.1186, 15.0700,
1.4268

Harmonies

Analogous

The Analogous color harmony consists of three colors that are next to each other on the color wheel.



54.3598, 52.7914, 57.1949



53.7340, 52.7914, 51.6136



52.1514, 52.7914, 47.8345

Triad

The Triadic color harmony groups three colors that are evenly spaced from another and form a triangle on the color wheel.



53.7340, 52.7914, 51.6136



46.6845, 52.7914, 52.0768



50.2767, 52.7914, 69.9492

Complementary

The Complementary color scheme is a pair of colors which are on the opposite of each other on the color wheel.



53.7340, 52.7914, 51.6136



54.4752, 60.8920, 72.5011

Split Complementary

Split-complementary colors differ from the complementary color scheme. The scheme consists of three colors, the original color and two neighbors of the complement color.



48.2524, 52.7914, 68.3441



53.7340, 52.7914, 51.6136



46.2138, 52.7914, 57.7678

Square

The Square scheme is like the rectangle color scheme, but the four colors are evenly spaced on the color wheel.



53.7340, 52.7914, 51.6136



48.0838, 52.7914, 48.0883



46.7799, 52.7914, 63.7767



52.3293, 52.7914, 68.0231

Rectangle

The Rectangle color scheme consists of four colors that form a rectangle on the color wheel.



53.7340, 52.7914, 51.6136



50.7877, 52.7914, 46.7007



46.7799, 52.7914, 63.7767



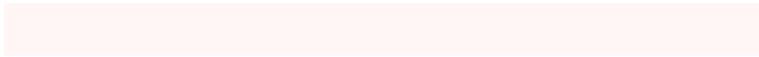
49.5705, 52.7914, 69.8041

Sweetspot

The Sweet Spot groups the original color and five complimentary colors.



53.7355, 52.7938, 51.6147



90.6699, 93.7983, 99.5523



56.1262, 52.4192, 68.3074



19.2360, 19.8341, 20.9439



0.0000, 0.0000, 0.0000



20.3446, 21.4041, 23.3091

Same Dimension

The Same Dimension uses a secret algorithm to generate beautiful new colors.



53.7355, 52.7938, 51.6147



77.0216, 74.3895, 70.6857



57.2337, 59.7902, 52.7808



12.5472, 12.6687, 12.9447



17.0371, 9.1914, 0.8762



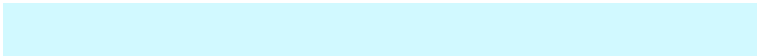
1.0699, 0.6389, 0.0669

Inverse Universe

The Inverse Universe completely reimagines the original color for something new.



54.4752, 60.8920, 72.5011



78.3279, 88.7001, 107.6002



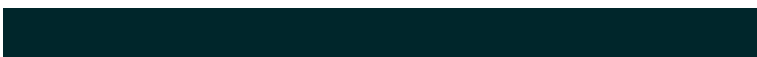
50.7809, 53.5032, 71.2696



12.6534, 13.8303, 15.9401



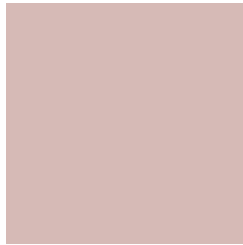
18.1587, 24.5791, 42.2403



1.1332, 1.5585, 2.5604

Previews

White Background



This preview shows how the XYZ color 53.7340, 52.7914, 51.6136 looks on a white background.

Color Contrast Check

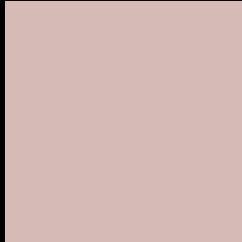
Large Text (above 18pt) WCAG AA × Fail

Any Text WCAG AA × Fail

Large Text (above 18pt) WCAG AAA × Fail

Any Text WCAG AAA × Fail

Black Background



This preview shows how the XYZ color 53.7340, 52.7914, 51.6136 looks on a black background.

Color Contrast Check

Large Text (above 18pt) WCAG AA ✓ Pass

Any Text WCAG AA ✓ Pass

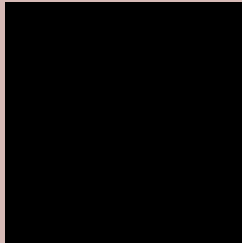
Large Text (above 18pt) WCAG AAA ✓ Pass

Any Text WCAG AAA ✓ Pass

If you want to check with other color combinations, try the [Color Contrast Checker](#).

XYZ 53.7340, 52.7914, 51.6136

Background



This preview shows how black text looks on a background with the XYZ color 53.7340, 52.7914, 51.6136.



This preview shows how white text looks on a background with the XYZ color 53.7340, 52.7914,

51.6136.

Color Blindness Simulation

Color vision deficiency is a very complex topic, and I could not describe the different causes any better than Wikipedia does, so if you want to learn more, you should check out their [article about color blindness](#).

Dichromacy



Original Color

53.7340, 52.7914, 51.6136

Protanopia

50.4137, 52.6347, 53.4014

Deuteranopia

54.0267, 52.9423, 51.6273



Tritanopia

55.6524, 52.9571, 60.7146

Trichromacy



Original Color

53.7340, 52.7914, 51.6136

Protanomaly

51.4779, 52.5524, 52.7778

Deuteranomaly

54.0267, 52.9423, 51.6273

Tritanomaly

54.8877, 52.9508, 57.1968

Monochromacy



Original Color

53.7340, 52.7914, 51.6136

Achromatopsia

51.2775, 53.9479, 58.7493

Achromatomaly

52.0125, 53.3968, 56.2805

CSS Examples

Text

The CSS property to change the color of the text to XYZ 53.7340, 52.7914, 51.6136 is called "color". The color property can be set on classes, ids or directly on the HTML element.

This example shows how text in the color rgb(214, 186, 182) looks like.

```
.text, #text, p{  
    color:rgb(214, 186, 182)  
}
```

If you want to add a text shadow in that color use the text-shadow property, you can generate a text shadow directly with our [CSS Text Shadow Generator](#).

Here you see how black text with a 4 pixel rgb(214, 186, 182) colored shadow looks like.

```
.shadow{ text-shadow: 4px 4px 2px rgb(214, 186, 182) }
```

Border

The CSS property to change the border of an element to XYZ 53.7340, 52.7914, 51.6136 is called "border". The border property can be set on classes, ids or directly on the HTML element.

This example shows the color as border, it can be applied via the CSS property "border" or "border-color".

```
.border, #border, table{ border:4px solid rgb(214, 186, 182) }
```


If only the border color should be changed use the property `border-color`.

```
.border{ border-color:rgb(214, 186, 182) }
```

If you want to add a box shadow in that color use:

Here you see how a box with a 4 pixel `rgb(214, 186, 182)` colored shadow looks like.

```
.boxshadow{ -moz-box-shadow:4px 4px 4px  
4px rgb(214, 186, 182); -webkit-box-  
shadow:4px 4px 4px 4px rgb(214, 186, 182);  
box-shadow:4px 4px 4px 4px rgb(214, 186,  
182) }
```

Background

The CSS property to change the background color of an element to XYZ 53.7340, 52.7914, 51.6136 is called "background". The background property can be set on classes, ids or directly on the HTML element.

```
.background, #background, body{  
background: rgb(214, 186, 182) }
```

If only the background color should be changed can be used:

```
.background{ background-color: rgb(214,  
186, 182) }
```

This example shows the color as background, it is applied via the CSS property "background".

To optimize and compress your CSS code, you can use our [online CSS compressor and optimizer](#) based on csstidy. If you want to create a linear or radial gradient as background or border, check our [CSS Gradient Generator](#).

Hey! You found this booklet interesting? Support Converting Colors with the new Membership Option!

The pro membership hides all ads, plus gives you double the colors in the color bucket, and more awesome pro features!

[Learn more, Memberships starting at \\$2.50/m!](#)

**Follow me
on Twitter!**

@ConvertingColor