

# Converting Colors

XYZ(53.8778, 50.9139, 53.4686)

Have a look what the booklet for  
XYZ(53.8778, 50.9139, 53.4686)  
contains.

<b>XYZ(53.7995, 50.9394, 53.4511)</b> .....	3
<b><i>Conversions</i></b> .....	4
<b><i>Details</i></b> .....	6
<b><i>Harmonies</i></b> .....	12
<b><i>Previews</i></b> .....	24
<b><i>Color Blindness Simulation</i></b> .....	28
<b><i>CSS Examples</i></b> .....	31

# Color

**XYZ(53.7995, 50.9394,  
53.4511)**

# Conversions

## Conversions Part 1

Format	Color
Hex	D9B4BA
RGB	217, 180, 186
RGB Percent	85%, 71%, 73%
CMY	0.1490, 0.2941, 0.2706
CMYK	0.00, 0.17, 0.14, 0.15
HSL	350°, 33%, 78%
HSV	350°, 17%, 85%
XYZ	53.7995, 50.9394, 53.4511
YIQ	191.7470, 20.1260, 9.7100

# Conversions

## Conversions Part 2

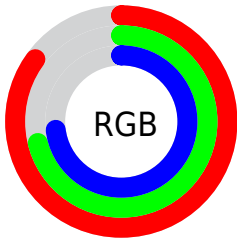
<b>Format</b>	<b>Color</b>
R <sub>Y</sub> B	217, 180, 186
Decimal	14267578
CIE Lab	76.64, 14.28, 1.96
CIE LCh	77, 14.416, 7.800
Yxy	50.9394, 0.3401, 0.3220
Android (android.graphics.Color)	4292457658 (0xFFD9B4BA)
YUV	191.7470, -2.8333, 22.1469
Hunter-Lab	71.3718, 9.6511, 5.5574

# Details

The XYZ color **53.7995, 50.9394, 53.4511** is a light color, and the websafe version is hex **CC9999**. A complement of this color would be **55.3952, 64.0335, 71.0713**, and the grayscale version is **49.9644, 52.5664, 57.2448**.

A 20% lighter version of the original color is **87.2625, 87.6617, 96.3256**, and **26.7233, 24.5536, 25.5211** is the 20% darker color. If you saturate the color by 10%, you get **47.9455, 42.1302, 42.5620**, and if you desaturate by 10%, it is **60.5882, 61.2232, 65.8666**.

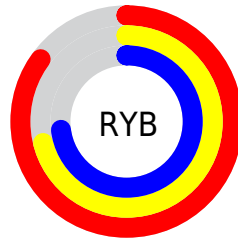
# Distribution



Red (85%)

Green (71%)

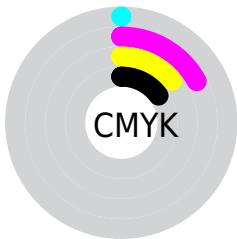
Blue (73%)



Red (85%)

Yellow (71%)

Blue (73%)

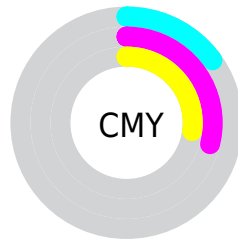


Cyan (0%)

Magenta (17%)

Yellow (14%)

Black (15%)



Cyan (15%)

Magenta (29%)


Yellow (27%)


# Brightness & Saturation Gradients

These gradients show how the XYZ color 53.7995, 50.9394, 53.4511 changes by changing the brightness by 10 percent. The first figure shows a shift by +10% for each color and the second figure -10%.


Similar to the brightness gradients but the following saturation gradients show a change of the XYZ color 53.7995, 50.9394, 53.4511 by changing the saturation by 10% instead.





 53.7995, 50.9394,  
53.4511

 53.7995, 50.9394,  
53.4511

391.5558,  
390.3283, 417.1287

 38.6714, 36.1604,  
37.7728

 94.9384, 91.5652,  
96.7161

 26.6838, 24.5581,  
25.5059


121.6800,  
118.1808, 125.1399

 17.4712, 15.7481,  
16.2320


153.0234,  
149.5106, 158.6492

 10.6684, 9.3461,  
9.5323

189.3340,  
185.9392, 197.6627

 5.9100, 4.9676,  
4.9885

230.9772,  
227.8508, 242.5989

 2.8306, 2.2283,  
2.1819

278.3183,

 1.0648, 0.7353,

275.6300, 293.8762

0.6639

331.7228,  
329.6610, 351.9133

0.0000, 0.0000,  
0.0000

53.7995, 50.9394,  
53.4511

53.7995, 50.9394,  
53.4511

47.9455, 42.1302,  
42.5620

60.5882, 61.2232,  
65.8666

42.9808, 34.7213,  
33.1369

68.3458, 73.0377,  
79.8612

38.8629, 28.6426,  
25.1140

77.1100, 86.4445,  
95.4888

35.5437, 23.8149,  
18.4257

82.4256, 93.4919,  
108.3092

32.9705, 20.1506,  
12.9987

■ 31.0840, 17.5508,  
8.7525

■ 29.8155, 15.9002,  
5.5973

■ 29.0773, 15.0478,  
3.4276

■ 28.9215, 14.8742,  
2.9501

# Harmonies

## Analogous

The Analogous color harmony consists of three colors that are next to each other on the color wheel.



53.4354, 50.9394, 61.3342



53.7995, 50.9394, 53.4511



52.6789, 50.9394, 46.7599

# Triad

The Triadic color harmony groups three colors that are evenly spaced from another and form a triangle on the color wheel.



53.7995, 50.9394, 53.4511



45.2731, 50.9394, 44.4244



46.4620, 50.9394, 70.5627

# Complementary

The Complementary color scheme is a pair of colors which are on the opposite of each other on the color wheel.



53.7995, 50.9394, 53.4511



55.3952, 64.0335, 71.0713

# Split Complementary

Split-complementary colors differ from the complementary color scheme. The scheme consists of three colors, the original color and two neighbors of the complement color.



44.3902, 50.9394, 65.1871



53.7995, 50.9394, 53.4511



43.7219, 50.9394, 49.9815

# Square

The Square scheme is like the rectangle color scheme, but the four colors are evenly spaced on the color wheel.



53.7995, 50.9394, 53.4511



47.7082, 50.9394, 41.8767



43.4049, 50.9394, 57.5275



49.1315, 50.9394, 71.7128



# Rectangle

The Rectangle color scheme consists of four colors that form a rectangle on the color wheel.



53.7995, 50.9394, 53.4511



51.2647, 50.9394, 43.7026



43.4049, 50.9394, 57.5275



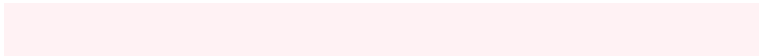
45.6756, 50.9394, 69.1671

# Sweetspot

The Sweet Spot groups the original color and five complimentary colors.



53.8009, 50.9417, 53.4522



89.4438, 91.4641, 98.7802



55.6635, 51.4789, 72.6490



18.9822, 19.3301, 20.8487



0.0000, 0.0000, 0.0000



20.3446, 21.4041, 23.3091



# Same Dimension

The Same Dimension uses a secret algorithm to generate beautiful new colors.



53.8009, 50.9417, 53.4522



74.7501, 69.2126, 71.8829



55.7781, 55.8948, 51.0317



13.1417, 13.0858, 14.0074



17.5330, 9.0142, 1.9210



1.1630, 0.5948, 0.2671



# Inverse Universe

The Inverse Universe completely reimagines the original color for something new.



53.8009, 50.9417, 53.4522



74.7501, 69.2126, 71.8829



53.1003, 58.2182, 74.0849



13.1417, 13.0858, 14.0074



17.5330, 9.0142, 1.9210

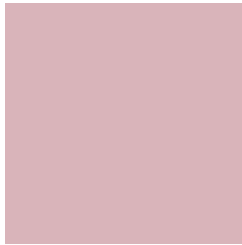


1.1630, 0.5948, 0.2671



# Previews

## White Background



This preview shows how the XYZ color 53.7995, 50.9394, 53.4511 looks on a white background.

## Color Contrast Check

Large Text (above 18pt) WCAG AA × Fail

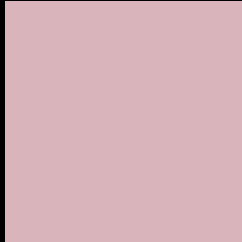
Any Text WCAG AA × Fail

Large Text (above 18pt) WCAG AAA × Fail

Any Text WCAG AAA × Fail



# Black Background



This preview shows how the XYZ color 53.7995, 50.9394, 53.4511 looks on a black background.

## Color Contrast Check

Large Text (above 18pt) WCAG AA ✓ Pass

Any Text WCAG AA ✓ Pass

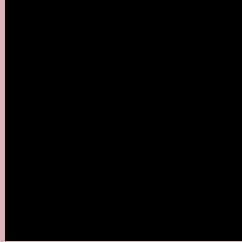
Large Text (above 18pt) WCAG AAA ✓ Pass

Any Text WCAG AAA ✓ Pass

If you want to check with other color combinations, try the [Color Contrast Checker](#).

# XYZ 53.7995, 50.9394, 53.4511

## Background



This preview shows how black text looks on a background with the XYZ color 53.7995, 50.9394, 53.4511.



This preview shows how white text looks on a background with the XYZ color 53.7995, 50.9394,



# Color Blindness Simulation

Color vision deficiency is a very complex topic, and I could not describe the different causes any better than Wikipedia does, so if you want to learn more, you should check out their [article about color blindness](#).

## Dichromacy



### Original Color

53.7995, 50.9394, 53.4511

### Protanopia

49.1254, 50.9345, 56.5324

### Deuteranopia

51.9849, 50.9251, 52.9886



## Tritanopia

54.6592, 50.9959, 57.4144

# Trichromacy



## Original Color

53.7995, 50.9394, 53.4511

## Protanomaly

50.6217, 50.7896, 55.2794

## Deuteranomaly

52.6363, 50.9557, 52.9601

## Tritanomaly

54.3278, 50.8633, 55.6694

# Monochromacy



## Original Color

53.7995, 50.9394, 53.4511

## Achromatopsia

50.1023, 52.7115, 57.4028

## Achromatomaly

51.3649, 52.1017, 56.0646

# CSS Examples

## Text

The CSS property to change the color of the text to XYZ 53.7995, 50.9394, 53.4511 is called "color". The color property can be set on classes, ids or directly on the HTML element.

This example shows how text in the color `rgb(217, 180, 186)` looks like.

```
.text, #text, p{  
    color:rgb(217, 180, 186)  
}
```

If you want to add a text shadow in that color use the text-shadow property, you can generate a text shadow directly with our [CSS Text Shadow Generator](#).

Here you see how black text with a 4 pixel rgb(217, 180, 186) colored shadow looks like.

```
.shadow{ text-shadow: 4px 4px 2px rgb(217, 180, 186) }
```

## Border

The CSS property to change the border of an element to XYZ 53.7995, 50.9394, 53.4511 is called "border". The border property can be set on classes, ids or directly on the HTML element.

This example shows the color as border, it can be applied via the CSS property "border" or "border-color".

```
.border, #border, table{ border:4px solid rgb(217, 180, 186) }
```



If only the border color should be changed use the property `border-color`.

```
.border{ border-color:rgb(217, 180, 186) }
```

If you want to add a box shadow in that color use:

Here you see how a box with a 4 pixel `rgb(217, 180, 186)` colored shadow looks like.

```
.boxshadow{ -moz-box-shadow:4px 4px 4px  
4px rgb(217, 180, 186); -webkit-box-  
shadow:4px 4px 4px 4px rgb(217, 180, 186);  
box-shadow:4px 4px 4px 4px rgb(217, 180,  
186) }
```

# Background

The CSS property to change the background color of an element to XYZ 53.7995, 50.9394, 53.4511 is called "background". The background property can be set on classes, ids or directly on the HTML element.

```
.background, #background, body{  
background: rgb(217, 180, 186) }
```

If only the background color should be changed can be used:

```
.background{ background-color: rgb(217,  
180, 186) }
```

This example shows the color as background, it is applied via the CSS property "background".

To optimize and compress your CSS code, you can use our [online CSS compressor and optimizer](#) based on csstidy. If you want to create a linear or radial gradient as background or border, check our [CSS Gradient Generator](#).

Hey! You found this booklet interesting? Support Converting Colors with the new Membership Option!

The pro membership hides all ads, plus gives you double the colors in the color bucket, and more awesome pro features!

**[Learn more, Memberships starting at \\$2.50/m!](#)**

**Follow me  
on Twitter!**

@ConvertingColor