

Converting Colors

XYZ(53.9393, 54.8486, 52.0905)

Have a look what the booklet for
XYZ(53.9393, 54.8486, 52.0905)
contains.

XYZ(53.8715, 54.7783, 51.9899)	3
<i>Conversions</i>	4
<i>Details</i>	6
<i>Harmonies</i>	12
<i>Previews</i>	24
<i>Color Blindness Simulation</i>	28
<i>CSS Examples</i>	31

Color

**XYZ(53.8715, 54.7783,
51.9899)**

Conversions

Conversions Part 1

Format	Color
Hex	D2C0B6
RGB	210, 192, 182
RGB Percent	82%, 75%, 71%
CMY	0.1765, 0.2470, 0.2863
CMYK	0.00, 0.09, 0.13, 0.18
HSL	21°, 24%, 77%
HSV	21°, 13%, 82%
XYZ	53.8715, 54.7783, 51.9899
YIQ	196.2420, 13.9380, 0.7060

Conversions

Conversions Part 2

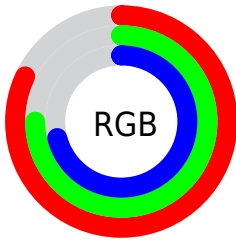
Format	Color
R _Y B	210, 198, 182
Decimal	13811894
CIE Lab	78.91, 4.68, 7.32
CIE LCh	79, 8.690, 57.432
Yxy	54.7783, 0.3354, 0.3410
Android (android.graphics.Color)	4292001974 (0xFFD2C0B6)
YUV	196.2420, -7.0213, 12.0658
Hunter-Lab	74.0124, 0.4034, 10.1605

Details

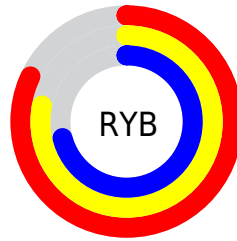
The XYZ color **53.8715, 54.7783, 51.9899** is a light color, and the websafe version is hex **CCCCCC**. A complement of this color would be **51.5784, 55.9057, 69.0458**, and the grayscale version is **52.6508, 55.3927, 60.3227**.

A 20% lighter version of the original color is **90.2400, 94.5678, 94.3862**, and **26.7126, 27.0188, 24.5761** is the 20% darker color. If you saturate the color by 10%, you get **49.0334, 48.3183, 40.4609**, and if you desaturate by 10%, it is **59.3099, 61.9170, 65.3261**.

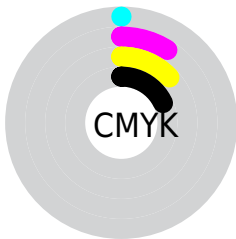
Distribution



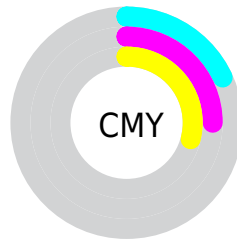
- Red (82%)
- Green (75%)
- Blue (71%)



- Red (82%)
- Yellow (78%)
- Blue (71%)



- Cyan (0%)
- Magenta (9%)
- Yellow (13%)
- Black (18%)



- Cyan (18%)
- Magenta (25%)
- Yellow (29%)

Brightness & Saturation Gradients

These gradients show how the XYZ color 53.8715, 54.7783, 51.9899 changes by changing the brightness by 10 percent. The first figure shows a shift by +10% for each color and the second figure -10%.

Similar to the brightness gradients but the following saturation gradients show a change of the XYZ color 53.8715, 54.7783, 51.9899 by changing the saturation by 10% instead.

■ 53.8715, 54.7783,
51.9899

■ 53.8715, 54.7783,
51.9899

391.8262,
405.0710, 411.3535

■ 38.7292, 39.2242,
36.6148

■ 95.0435, 97.2161,
94.5428

■ 26.7289, 26.9342,
24.6160

121.8040,
124.8685, 122.5577

■ 17.5053, 17.5238,
15.5748

153.1679,
157.3226, 155.6229

■ 10.6929, 10.6087,
9.0727

189.5005,
194.9627, 194.1571

■ 5.9265, 5.8044,
4.6912

231.1674,
238.1732, 238.5787

■ 2.8407, 2.7265,
2.0117

278.5337,

■ 1.0701, 0.9907,

287.3385, 289.3062

0.5624

331.9648,
342.8430, 346.7583

■ 0.0000, 0.0000,
0.0000

■ 53.8715, 54.7783,
51.9899

■ 53.8715, 54.7783,
51.9899

■ 49.0334, 48.3183,
40.4609

■ 59.3099, 61.9170,
65.3261

■ 44.7694, 42.5094,
30.6569

■ 65.3648, 69.7464,
80.5395

■ 41.0579, 37.3326,
22.4950

■ 72.0569, 78.2877,
97.7008

■ 37.8741, 32.7653,
15.8837

■ 77.5825, 86.8296,
107.2785

■ 35.1911, 28.7834,
10.7223

■ 80.3886, 92.4418,
108.2139

■ 32.9793, 25.3610,
6.8984

■ 31.2053, 22.4698,
4.2826

■ 29.8303, 20.0784,
2.7188

■ 29.0966, 18.7379,
2.0832

Harmonies

Analogous

The Analogous color harmony consists of three colors that are next to each other on the color wheel.



55.0656, 54.7783, 55.3732



53.8715, 54.7783, 51.9899



52.2139, 54.7783, 50.6470

Triad

The Triadic color harmony groups three colors that are evenly spaced from another and form a triangle on the color wheel.



53.8715, 54.7783, 51.9899



48.8207, 54.7783, 59.2196



53.6085, 54.7783, 68.4810

Complementary

The Complementary color scheme is a pair of colors which are on the opposite of each other on the color wheel.



53.8715, 54.7783, 51.9899



51.5784, 55.9057, 69.0458

Split Complementary

Split-complementary colors differ from the complementary color scheme. The scheme consists of three colors, the original color and two neighbors of the complement color.



51.9166, 54.7783, 69.6485



53.8715, 54.7783, 51.9899



49.1757, 54.7783, 64.1295

Square

The Square scheme is like the rectangle color scheme, but the four colors are evenly spaced on the color wheel.



53.8715, 54.7783, 51.9899



49.3189, 54.7783, 54.6745



50.2996, 54.7783, 68.0153



54.9114, 54.7783, 64.9065

Rectangle

The Rectangle color scheme consists of four colors that form a rectangle on the color wheel.



53.8715, 54.7783, 51.9899



51.0776, 54.7783, 51.0307



50.2996, 54.7783, 68.0153



53.0653, 54.7783, 69.1763

Sweetspot

The Sweet Spot groups the original color and five complimentary colors.



53.8730, 54.7807, 51.9911



91.3951, 95.2487, 99.7940



53.7557, 51.3378, 61.8428



19.4189, 20.2001, 21.0049



0.0000, 0.0000, 0.0000



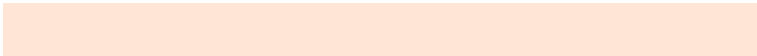
20.3446, 21.4041, 23.3091

Same Dimension

The Same Dimension uses a secret algorithm to generate beautiful new colors.



53.8730, 54.7807, 51.9911



81.3608, 82.0405, 75.2996



57.0457, 61.1261, 53.0486



12.1494, 12.4896, 12.3824



17.8351, 11.6032, 1.2996



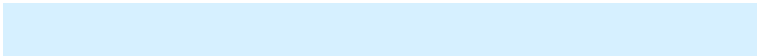
1.0714, 0.7971, 0.0974

Inverse Universe

The Inverse Universe completely reimagines the original color for something new.



51.5784, 55.9057, 69.0458



77.1247, 84.1158, 106.7788



48.5261, 49.8012, 68.0284



11.7883, 12.6668, 15.0673



12.4764, 13.5994, 39.1599



0.7711, 0.9074, 2.2141

Previews

White Background



This preview shows how the XYZ color 53.8715, 54.7783, 51.9899 looks on a white background.

Color Contrast Check

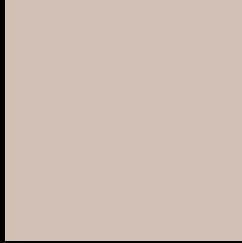
Large Text (above 18pt) WCAG AA × Fail

Any Text WCAG AA × Fail

Large Text (above 18pt) WCAG AAA × Fail

Any Text WCAG AAA × Fail

Black Background



This preview shows how the XYZ color 53.8715, 54.7783, 51.9899 looks on a black background.

Color Contrast Check

Large Text (above 18pt) WCAG AA ✓ Pass

Any Text WCAG AA ✓ Pass

Large Text (above 18pt) WCAG AAA ✓ Pass

Any Text WCAG AAA ✓ Pass

If you want to check with other color combinations, try the [Color Contrast Checker](#).

XYZ 53.8715, 54.7783, 51.9899

Background



This preview shows how black text looks on a background with the XYZ color 53.8715, 54.7783, 51.9899.



This preview shows how white text looks on a background with the XYZ color 53.8715, 54.7783,

Color Blindness Simulation

Color vision deficiency is a very complex topic, and I could not describe the different causes any better than Wikipedia does, so if you want to learn more, you should check out their [article about color blindness](#).

Dichromacy



Original Color

53.8715, 54.7783, 51.9899

Protanopia

52.4195, 55.0057, 52.6541

Deuteranopia

55.9583, 54.8742, 52.4422



Tritanopia

56.5373, 54.9010, 64.7439

Trichromacy



Original Color

53.8715, 54.7783, 51.9899

Protanomaly

53.0159, 54.9816, 52.6180

Deuteranomaly

55.2796, 54.8447, 52.4723

Tritanomaly

55.5286, 54.8095, 59.8772

Monochromacy



Original Color

53.8715, 54.7783, 51.9899

Achromatopsia

52.4687, 55.2011, 60.1140

Achromatomaly

53.0065, 55.2093, 57.1529

CSS Examples

Text

The CSS property to change the color of the text to XYZ 53.8715, 54.7783, 51.9899 is called "color". The color property can be set on classes, ids or directly on the HTML element.

This example shows how text in the color rgb(210, 192, 182) looks like.

```
.text, #text, p{  
    color:rgb(210, 192, 182)  
}
```

If you want to add a text shadow in that color use the text-shadow property, you can generate a text shadow directly with our [CSS Text Shadow Generator](#).

Here you see how black text with a 4 pixel rgb(210, 192, 182) colored shadow looks like.

```
.shadow{ text-shadow: 4px 4px 2px rgb(210, 192, 182) }
```

Border

The CSS property to change the border of an element to XYZ 53.8715, 54.7783, 51.9899 is called "border". The border property can be set on classes, ids or directly on the HTML element.

This example shows the color as border, it can be applied via the CSS property "border" or "border-color".

```
.border, #border, table{ border:4px solid rgb(210, 192, 182) }
```


If only the border color should be changed use the property `border-color`.

```
.border{ border-color:rgb(210, 192, 182) }
```

If you want to add a box shadow in that color use:

Here you see how a box with a 4 pixel `rgb(210, 192, 182)` colored shadow looks like.

```
.boxshadow{ -moz-box-shadow:4px 4px 4px  
4px rgb(210, 192, 182); -webkit-box-  
shadow:4px 4px 4px 4px rgb(210, 192, 182);  
box-shadow:4px 4px 4px 4px rgb(210, 192,  
182) }
```

Background

The CSS property to change the background color of an element to XYZ 53.8715, 54.7783, 51.9899 is called "background". The background property can be set on classes, ids or directly on the HTML element.

```
.background, #background, body{  
background: rgb(210, 192, 182) }
```

If only the background color should be changed can be used:

```
.background{ background-color: rgb(210,  
192, 182) }
```

This example shows the color as background, it is applied via the CSS property "background".

To optimize and compress your CSS code, you can use our [online CSS compressor and optimizer](#) based on csstidy. If you want to create a linear or radial gradient as background or border, check our [CSS Gradient Generator](#).

Hey! You found this booklet interesting? Support Converting Colors with the new Membership Option!

The pro membership hides all ads, plus gives you double the colors in the color bucket, and more awesome pro features!

[Learn more, Memberships starting at \\$2.50/m!](#)

**Follow me
on Twitter!**

@ConvertingColor