

Converting Colors

XYZ(54.0032, 54.7517, 57.6476)

Have a look what the booklet for
XYZ(54.0032, 54.7517, 57.6476)
contains.

XYZ(54.0962, 54.7704, 57.5897)	3
<i>Conversions</i>	4
<i>Details</i>	6
<i>Harmonies</i>	12
<i>Previews</i>	24
<i>Color Blindness Simulation</i>	28
<i>CSS Examples</i>	31

Color

**XYZ(54.0962, 54.7704,
57.5897)**

Conversions

Conversions Part 1

Format	Color
Hex	CFC0C0
RGB	207, 192, 192
RGB Percent	81%, 75%, 75%
CMY	0.1882, 0.2470, 0.2471
CMYK	0.00, 0.07, 0.07, 0.19
HSL	0°, 14%, 78%
HSV	0°, 7%, 81%
XYZ	54.0962, 54.7704, 57.5897
YIQ	196.4850, 8.9400, 3.1800

Conversions

Conversions Part 2

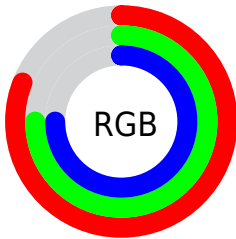
Format	Color
R _Y B	207, 192, 192
Decimal	13615296
CIE Lab	78.91, 5.27, 1.89
CIE LCh	79, 5.601, 19.754
Yxy	54.7704, 0.3250, 0.3290
Android (android.graphics.Color)	4291805376 (0xFFCFC0C0)
YUV	196.4850, -2.2111, 9.2217
Hunter-Lab	74.0070, 0.9641, 5.6675

Details

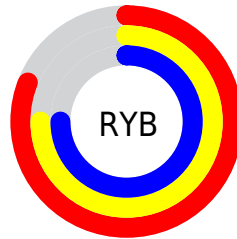
The XYZ color **54.0962, 54.7704, 57.5897** is a light color, and the websafe version is hex **CCCCCC**. A complement of this color would be **55.3135, 60.3362, 67.7630**, and the grayscale version is **52.7710, 55.5192, 60.4604**.

A 20% lighter version of the original color is **91.7507, 95.1721, 102.3412**, and **27.0297, 27.1016, 28.2326** is the 20% darker color. If you saturate the color by 10%, you get **47.7334, 45.4603, 44.9377**, and if you desaturate by 10%, it is **61.4237, 65.4923, 72.1562**.

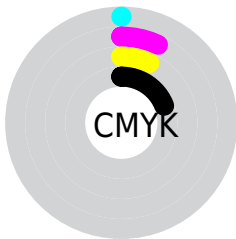
Distribution



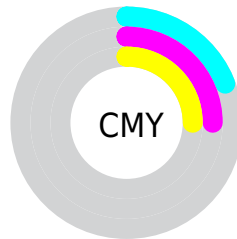
- Red (81%)
- Green (75%)
- Blue (75%)



- Red (81%)
- Yellow (75%)
- Blue (75%)



- Cyan (0%)
- Magenta (7%)
- Yellow (7%)
- Black (19%)



- Cyan (19%)
- Magenta (25%)
- Yellow (25%)

Brightness & Saturation Gradients

These gradients show how the XYZ color 54.0962, 54.7704, 57.5897 changes by changing the brightness by 10 percent. The first figure shows a shift by +10% for each color and the second figure -10%.

Similar to the brightness gradients but the following saturation gradients show a change of the XYZ color 54.0962, 54.7704, 57.5897 by changing the saturation by 10% instead.

■ 54.0962, 54.7704,
57.5897

■ 54.0962, 54.7704,
57.5897

392.6691,
405.0410, 433.2108

■ 38.9096, 39.2179,
41.0664

■ 95.3715, 97.2045,
102.8340

■ 26.8698, 26.9293,
28.0509

122.1910,
124.8549, 132.3920

■ 17.6115, 17.5201,
18.1246

153.6187,
157.3067, 167.1321

■ 10.7694, 10.6060,
10.8691

190.0200,
194.9443, 207.4726

■ 5.9782, 5.8026,
5.8658

231.7604,
238.1522, 253.8322

■ 2.8723, 2.7254,
2.6962

279.2051,

■ 1.0866, 0.9901,

287.3147, 306.6294

0.9415

332.7196,
342.8161, 366.2828

■ 0.0139, 0.0000,
0.0000

■ 0.0000, 0.0000,
0.0000

■ 54.0962, 54.7704,
57.5897

■ 54.0962, 54.7704,
57.5897

■ 47.7334, 45.4603,
44.9377

■ 61.4237, 65.4923,
72.1562

■ 42.2907, 37.4963,
34.1171

■ 69.7488, 77.6737,
88.7082

■ 37.7270, 30.8184,
25.0444

■ 79.1087, 91.3690,
107.3178

■ 33.9962, 25.3591,
17.6277

■ 79.5425, 92.0056,
108.1743

■ 31.0480, 21.0450,
11.7673

■ 28.8268, 17.7946,
7.3523

■ 27.2696, 15.5157,
4.2575

■ 26.3027, 14.1005,
2.3363

■ 25.8261, 13.4028,
1.3895

Harmonies

Analogous

The Analogous color harmony consists of three colors that are next to each other on the color wheel.



54.1904, 54.7704, 60.7317



54.0962, 54.7704, 57.5897



53.4514, 54.7704, 55.0823

Triad

The Triadic color harmony groups three colors that are evenly spaced from another and form a triangle on the color wheel.



54.0962, 54.7704, 57.5897



50.4425, 54.7704, 55.7659



51.6782, 54.7704, 65.8674

Complementary

The Complementary color scheme is a pair of colors which are on the opposite of each other on the color wheel.



54.0962, 54.7704, 57.5897



55.3135, 60.3362, 67.7630

Split Complementary

Split-complementary colors differ from the complementary color scheme. The scheme consists of three colors, the original color and two neighbors of the complement color.



50.6883, 54.7704, 64.4332



54.0962, 54.7704, 57.5897



49.9816, 54.7704, 58.5529

Square

The Square scheme is like the rectangle color scheme, but the four colors are evenly spaced on the color wheel.



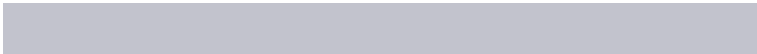
54.0962, 54.7704, 57.5897



51.3382, 54.7704, 54.0556



50.0709, 54.7704, 61.7295



52.7837, 54.7704, 65.5871

Rectangle

The Rectangle color scheme consists of four colors that form a rectangle on the color wheel.



54.0962, 54.7704, 57.5897



52.8011, 54.7704, 54.0725



50.0709, 54.7704, 61.7295



51.3211, 54.7704, 65.5679

Sweetspot

The Sweet Spot groups the original color and five complimentary colors.



54.0977, 54.7728, 57.5909



92.6346, 96.4657, 104.0977



55.8450, 55.4705, 66.7958



19.8529, 20.6846, 22.3315



0.0000, 0.0000, 0.0000



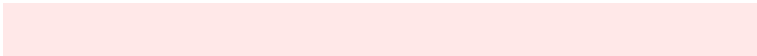
20.3446, 21.4041, 23.3091

Same Dimension

The Same Dimension uses a secret algorithm to generate beautiful new colors.



54.0977, 54.7728, 57.5909



84.6848, 84.8335, 88.2923



55.7860, 58.1493, 58.1536



11.8090, 11.8087, 12.2689



16.2128, 8.3587, 0.7589



0.9066, 0.4675, 0.0425

Inverse Universe

The Inverse Universe completely reimagines the original color for something new.



55.3135, 60.3362, 67.7630



87.1032, 95.9007, 108.5276



53.5401, 56.7896, 67.1719



12.1582, 13.4066, 15.1906



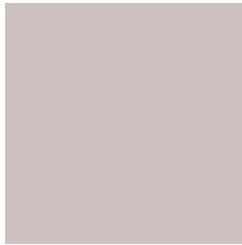
21.1466, 30.9398, 42.0499



1.1825, 1.7301, 2.3512

Previews

White Background



This preview shows how the XYZ color 54.0962, 54.7704, 57.5897 looks on a white background.

Color Contrast Check

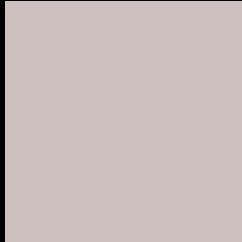
Large Text (above 18pt) WCAG AA × Fail

Any Text WCAG AA × Fail

Large Text (above 18pt) WCAG AAA × Fail

Any Text WCAG AAA × Fail

Black Background



This preview shows how the XYZ color 54.0962, 54.7704, 57.5897 looks on a black background.

Color Contrast Check

Large Text (above 18pt) WCAG AA ✓ Pass

Any Text WCAG AA ✓ Pass

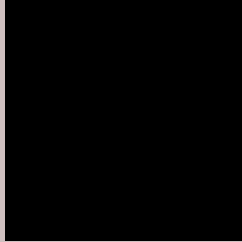
Large Text (above 18pt) WCAG AAA ✓ Pass

Any Text WCAG AAA ✓ Pass

If you want to check with other color combinations, try the [Color Contrast Checker](#).

XYZ 54.0962, 54.7704, 57.5897

Background



This preview shows how black text looks on a background with the XYZ color 54.0962, 54.7704, 57.5897.



This preview shows how white text looks on a background with the XYZ color 54.0962, 54.7704,

Color Blindness Simulation

Color vision deficiency is a very complex topic, and I could not describe the different causes any better than Wikipedia does, so if you want to learn more, you should check out their [article about color blindness](#).

Dichromacy



Original Color

54.0962, 54.7704, 57.5897

Protanopia

52.4706, 54.5759, 58.2208

Deuteranopia

55.8476, 54.6925, 58.0653



Tritanopia

55.7274, 54.7900, 65.3960

Trichromacy



Original Color

54.0962, 54.7704, 57.5897

Protanomaly

53.0527, 54.5467, 58.1845

Deuteranomaly

55.1905, 54.6742, 58.0964

Tritanomaly

55.0686, 54.8416, 62.3266

Monochromacy



Original Color

54.0962, 54.7704, 57.5897

Achromatopsia

52.4687, 55.2011, 60.1140

Achromatomaly

53.1849, 55.2497, 59.4909

CSS Examples

Text

The CSS property to change the color of the text to XYZ 54.0962, 54.7704, 57.5897 is called "color". The color property can be set on classes, ids or directly on the HTML element.

This example shows how text in the color rgb(207, 192, 192) looks like.

```
.text, #text, p{  
    color:rgb(207, 192, 192)  
}
```

If you want to add a text shadow in that color use the text-shadow property, you can generate a text shadow directly with our [CSS Text Shadow Generator](#).

Here you see how black text with a 4 pixel rgb(207, 192, 192) colored shadow looks like.

```
.shadow{ text-shadow: 4px 4px 2px rgb(207, 192, 192) }
```

Border

The CSS property to change the border of an element to XYZ 54.0962, 54.7704, 57.5897 is called "border". The border property can be set on classes, ids or directly on the HTML element.

This example shows the color as border, it can be applied via the CSS property "border" or "border-color".

```
.border, #border, table{ border:4px solid rgb(207, 192, 192) }
```


If only the border color should be changed use the property border-color.

```
.border{ border-color:rgb(207, 192, 192) }
```

If you want to add a box shadow in that color use:

Here you see how a box with a 4 pixel rgb(207, 192, 192) colored shadow looks like.

```
.boxshadow{ -moz-box-shadow:4px 4px 4px  
4px rgb(207, 192, 192); -webkit-box-  
shadow:4px 4px 4px 4px rgb(207, 192, 192);  
box-shadow:4px 4px 4px 4px rgb(207, 192,  
192) }
```

Background

The CSS property to change the background color of an element to XYZ 54.0962, 54.7704, 57.5897 is called "background". The background property can be set on classes, ids or directly on the HTML element.

```
.background, #background, body{  
background: rgb(207, 192, 192) }
```

If only the background color should be changed can be used:

```
.background{ background-color: rgb(207,  
192, 192) }
```

This example shows the color as background, it is applied via the CSS property "background".

To optimize and compress your CSS code, you can use our [online CSS compressor and optimizer](#) based on csstidy. If you want to create a linear or radial gradient as background or border, check our [CSS Gradient Generator](#).

Hey! You found this booklet interesting? Support Converting Colors with the new Membership Option!

The pro membership hides all ads, plus gives you double the colors in the color bucket, and more awesome pro features!

[Learn more, Memberships starting at \\$2.50/m!](#)

**Follow me
on Twitter!**

@ConvertingColor