

Converting Colors

XYZ(54.0146, 51.9611, 46.7364)

Have a look what the booklet for
XYZ(54.0146, 51.9611, 46.7364)
contains.

XYZ(53.9915, 52.0997, 46.7458)	3
<i>Conversions</i>	4
<i>Details</i>	6
<i>Harmonies</i>	12
<i>Previews</i>	24
<i>Color Blindness Simulation</i>	28
<i>CSS Examples</i>	31

Color

**XYZ(53.9915, 52.0997,
46.7458)**

Conversions

Conversions Part 1

Format	Color
Hex	DCB7AD
RGB	220, 183, 173
RGB Percent	86%, 72%, 68%
CMY	0.1373, 0.2823, 0.3216
CMYK	0.00, 0.17, 0.21, 0.14
HSL	13°, 40%, 77%
HSV	13°, 21%, 86%
XYZ	53.9915, 52.0997, 46.7458
YIQ	192.9230, 25.2620, 4.7340

Conversions

Conversions Part 2

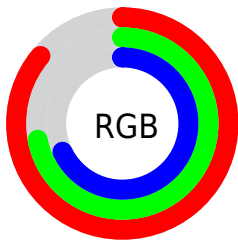
Format	Color
R_{YB}	220, 186, 173
Decimal	14464941
CIE _{Lab}	77.34, 11.76, 10.05
CIE _{LCh}	77, 15.476, 40.518
Yxy	52.0997, 0.3533, 0.3409
Android (android.graphics.Color)	4292655021 (0xFFDCB7AD)
YUV	192.9230, -9.8220, 23.7465
Hunter-Lab	72.1801, 7.2047, 12.1283

Details

The XYZ color **53.9915, 52.0997, 46.7458** is a light color, and the websafe version is hex **FFCCCC**. A complement of this color would be **53.1980, 60.1433, 76.5155**, and the grayscale version is **50.6899, 53.3298, 58.0761**.

A 20% lighter version of the original color is **86.1101, 88.5944, 85.9607**, and **26.7437, 25.2383, 21.5511** is the 20% darker color. If you saturate the color by 10%, you get **48.6810, 44.6093, 35.3234**, and if you desaturate by 10%, it is **60.0949, 60.6141, 60.1630**.

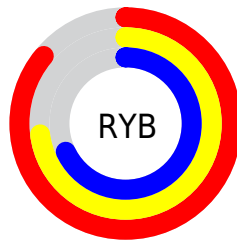
Distribution



Red (86%)

Green (72%)

Blue (68%)



Red (86%)

Yellow (73%)

Blue (68%)

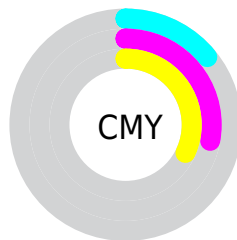


Cyan (0%)

Magenta (17%)

Yellow (21%)

Black (14%)



Cyan (14%)

Magenta (28%)

Yellow (32%)

Brightness & Saturation Gradients

These gradients show how the XYZ color 53.9915, 52.0997, 46.7458 changes by changing the brightness by 10 percent. The first figure shows a shift by +10% for each color and the second figure -10%.

Similar to the brightness gradients but the following saturation gradients show a change of the XYZ color 53.9915, 52.0997, 46.7458 by changing the saturation by 10% instead.

■ 53.9915, 52.0997,
46.7458

■ 53.9915, 52.0997,
46.7458

392.2765,
394.8214, 390.1633

■ 38.8255, 37.0846,
32.4818

■ 95.2187, 93.2783,
86.6801

■ 26.8041, 25.2730,
21.4619

122.0107,
120.2105, 113.1874

■ 17.5620, 16.2805,
13.2676

153.4087,
151.8838, 144.6130

■ 10.7338, 9.7229,
7.4802

189.7780,
188.6827, 181.3754

■ 5.9541, 5.2156,
3.6812

231.4841,
230.9915, 223.8931

■ 2.8576, 2.3743,
1.4521

278.8923,

■ 1.0789, 0.8126,

279.1946, 272.5846

0.1819

332.3680,
333.6764, 327.8685

■ 0.0073, 0.0000,
0.0000

■ 0.0000, 0.0000,
0.0000

■ 53.9915, 52.0997,
46.7458

■ 53.9915, 52.0997,
46.7458

■ 48.6810, 44.6093,
35.3234

■ 60.0949, 60.6141,
60.1630

■ 44.1260, 38.0970,
25.7971

■ 67.0181, 70.1818,
75.6609

■ 40.2927, 32.5242,
18.0644

■ 74.7917, 80.8400,
93.3244

■ 37.1427, 27.8468,
12.0119

■ 82.4620, 92.2291,
108.0635

■ 34.6338, 24.0170,
7.5131

■ 83.3254, 93.9557,
108.3513

■ 32.7189, 20.9824,
4.4235

■ 31.3438, 18.6846,
2.5706

■ 30.5250, 17.2350,
1.7178

Harmonies

Analogous

The Analogous color harmony consists of three colors that are next to each other on the color wheel.



55.3527, 52.0997, 53.7925



53.9915, 52.0997, 46.7458



51.4495, 52.0997, 42.6558

Triad

The Triadic color harmony groups three colors that are evenly spaced from another and form a triangle on the color wheel.



53.9915, 52.0997, 46.7458



44.3251, 52.0997, 51.4429



50.5697, 52.0997, 74.3874

Complementary

The Complementary color scheme is a pair of colors which are on the opposite of each other on the color wheel.



53.9915, 52.0997, 46.7458



53.1980, 60.1433, 76.5155

Split Complementary

Split-complementary colors differ from the complementary color scheme. The scheme consists of three colors, the original color and two neighbors of the complement color.



47.6378, 52.0997, 73.5971



53.9915, 52.0997, 46.7458



44.1107, 52.0997, 59.7679

Square

The Square scheme is like the rectangle color scheme, but the four colors are evenly spaced on the color wheel.



53.9915, 52.0997, 46.7458



45.8987, 52.0997, 45.1740



45.3010, 52.0997, 68.0382



53.3253, 52.0997, 70.1003

Rectangle

The Rectangle color scheme consists of four colors that form a rectangle on the color wheel.



53.9915, 52.0997, 46.7458



49.4676, 52.0997, 41.8862



45.3010, 52.0997, 68.0382



49.5709, 52.0997, 74.7165

Sweetspot

The Sweet Spot groups the original color and five complimentary colors.



53.9929, 52.1021, 46.7469



88.9612, 91.6087, 95.1981



56.1671, 49.7866, 68.0153



18.9051, 19.4196, 20.0712



0.0000, 0.0000, 0.0000



20.3446, 21.4041, 23.3091

Same Dimension

The Same Dimension uses a secret algorithm to generate beautiful new colors.



53.9929, 52.1021, 46.7469



71.7043, 67.5443, 57.2317



59.1058, 62.3278, 48.4512



13.2796, 13.4985, 13.6311



17.9809, 10.2474, 1.0302



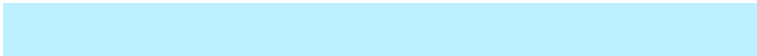
1.2283, 0.7906, 0.0879

Inverse Universe

The Inverse Universe completely reimagines the original color for something new.



53.1980, 60.1433, 76.5155



70.3841, 80.8448, 106.5027



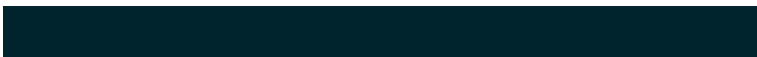
47.9440, 49.6353, 74.7642



13.1974, 14.3345, 16.7234



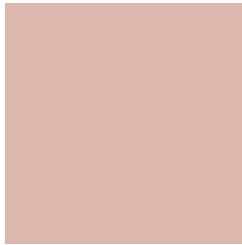
16.4552, 20.7797, 42.8820



1.1260, 1.4661, 2.7981

Previews

White Background



This preview shows how the XYZ color 53.9915, 52.0997, 46.7458 looks on a white background.

Color Contrast Check

Large Text (above 18pt) WCAG AA × Fail

Any Text WCAG AA × Fail

Large Text (above 18pt) WCAG AAA × Fail

Any Text WCAG AAA × Fail

Black Background



This preview shows how the XYZ color 53.9915, 52.0997, 46.7458 looks on a black background.

Color Contrast Check

Large Text (above 18pt) WCAG AA ✓ Pass

Any Text WCAG AA ✓ Pass

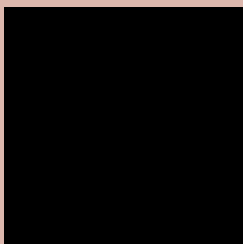
Large Text (above 18pt) WCAG AAA ✓ Pass

Any Text WCAG AAA ✓ Pass

If you want to check with other color combinations, try the [Color Contrast Checker](#).

XYZ 53.9915, 52.0997, 46.7458

Background



This preview shows how black text looks on a background with the XYZ color 53.9915, 52.0997, 46.7458.



This preview shows how white text looks on a background with the XYZ color 53.9915, 52.0997,

46.7458.

Color Blindness Simulation

Color vision deficiency is a very complex topic, and I could not describe the different causes any better than Wikipedia does, so if you want to learn more, you should check out their [article about color blindness](#).

Dichromacy



Original Color

53.9915, 52.0997, 46.7458

Protanopia

49.8553, 52.4417, 49.0896

Deuteranopia

53.0022, 51.8970, 46.7588



Tritanopia

56.4903, 52.2255, 58.1421

Trichromacy



Original Color

53.9915, 52.0997, 46.7458

Protanomaly

51.2733, 52.2228, 48.4519

Deuteranomaly

53.2986, 52.0498, 46.7726

Tritanomaly

55.5110, 52.1225, 53.5893

Monochromacy



Original Color

53.9915, 52.0997, 46.7458

Achromatopsia

50.6879, 53.3276, 58.0738

Achromatomaly

51.6891, 52.6369, 53.8900

CSS Examples

Text

The CSS property to change the color of the text to XYZ 53.9915, 52.0997, 46.7458 is called "color". The color property can be set on classes, ids or directly on the HTML element.

This example shows how text in the color `rgb(220, 183, 173)` looks like.

```
.text, #text, p{  
    color:rgb(220, 183, 173)  
}
```

If you want to add a text shadow in that color use the text-shadow property, you can generate a text shadow directly with our [CSS Text Shadow Generator](#).

Here you see how black text with a 4 pixel rgb(220, 183, 173) colored shadow looks like.

```
.shadow{ text-shadow: 4px 4px 2px rgb(220, 183, 173) }
```

Border

The CSS property to change the border of an element to XYZ 53.9915, 52.0997, 46.7458 is called "border". The border property can be set on classes, ids or directly on the HTML element.

This example shows the color as border, it can be applied via the CSS property "border" or "border-color".

```
.border, #border, table{ border:4px solid rgb(220, 183, 173) }
```


If only the border color should be changed use the property `border-color`.

```
.border{ border-color:rgb(220, 183, 173) }
```

If you want to add a box shadow in that color use:

Here you see how a box with a 4 pixel `rgb(220, 183, 173)` colored shadow looks like.

```
.boxshadow{ -moz-box-shadow:4px 4px 4px  
4px rgb(220, 183, 173); -webkit-box-  
shadow:4px 4px 4px 4px rgb(220, 183, 173);  
box-shadow:4px 4px 4px 4px rgb(220, 183,  
173) }
```

Background

The CSS property to change the background color of an element to XYZ 53.9915, 52.0997, 46.7458 is called "background". The background property can be set on classes, ids or directly on the HTML element.

```
.background, #background, body{  
background: rgb(220, 183, 173) }
```

If only the background color should be changed can be used:

```
.background{ background-color: rgb(220,  
183, 173) }
```

This example shows the color as background, it is applied via the CSS property "background".

To optimize and compress your CSS code, you can use our [online CSS compressor and optimizer](#) based on csstidy. If you want to create a linear or radial gradient as background or border, check our [CSS Gradient Generator](#).

Hey! You found this booklet interesting? Support Converting Colors with the new Membership Option!

The pro membership hides all ads, plus gives you double the colors in the color bucket, and more awesome pro features!

[Learn more, Memberships starting at \\$2.50/m!](#)

**Follow me
on Twitter!**

@ConvertingColor