

Converting Colors

XYZ(54.0381, 53.7178, 48.3153)

Have a look what the booklet for
XYZ(54.0381, 53.7178, 48.3153)
contains.

XYZ(54.0400, 53.6605, 48.0667)	3
<i>Conversions</i>	4
<i>Details</i>	6
<i>Harmonies</i>	12
<i>Previews</i>	24
<i>Color Blindness Simulation</i>	28
<i>CSS Examples</i>	31

Color

**XYZ(54.0400, 53.6605,
48.0667)**

Conversions

Conversions Part 1

Format	Color
Hex	D8BCAF
RGB	216, 188, 175
RGB Percent	85%, 74%, 69%
CMY	0.1529, 0.2627, 0.3137
CMYK	0.00, 0.13, 0.19, 0.15
HSL	19°, 34%, 77%
HSV	19°, 19%, 85%
XYZ	54.0400, 53.6605, 48.0667
YIQ	194.8900, 20.8610, 1.8930

Conversions

Conversions Part 2

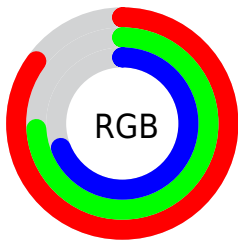
Format	Color
R _Y B	216, 194, 175
Decimal	14204079
CIE Lab	78.26, 7.91, 10.24
CIE LCh	78, 12.938, 52.308
Yxy	53.6605, 0.3469, 0.3445
Android (android.graphics.Color)	4292394159 (0xFFD8BCAF)
YUV	194.8900, -9.8058, 18.5135
Hunter-Lab	73.2533, 3.4886, 12.3730

Details

The XYZ color **54.0400, 53.6605, 48.0667** is a light color, and the websafe version is hex **FFCCCC**. A complement of this color would be **51.4295, 56.7824, 73.2157**, and the grayscale version is **51.8553, 54.5558, 59.4113**.

A 20% lighter version of the original color is **88.0145, 91.7309, 88.6683**, and **26.9371, 26.3351, 22.4023** is the 20% darker color. If you saturate the color by 10%, you get **49.0948, 46.8977, 36.7756**, and if you desaturate by 10%, it is **59.6495, 61.2079, 61.2546**.

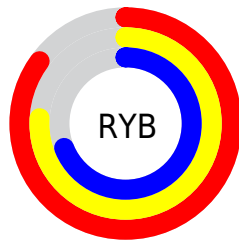
Distribution



Red (85%)

Green (74%)

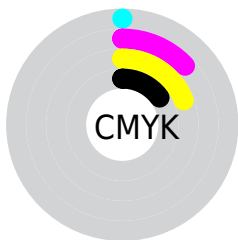
Blue (69%)



Red (85%)

Yellow (76%)

Blue (69%)

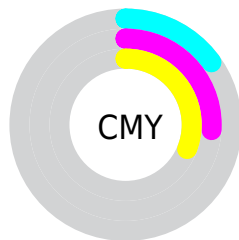


Cyan (0%)

Magenta (13%)

Yellow (19%)

Black (15%)



Cyan (15%)


Magenta (26%)


Yellow (31%)

Brightness & Saturation Gradients


These gradients show how the XYZ color 54.0400, 53.6605, 48.0667 changes by changing the brightness by 10 percent. The first figure shows a shift by +10% for each color and the second figure -10%.


Similar to the brightness gradients but the following saturation gradients show a change of the XYZ color 54.0400, 53.6605, 48.0667 by changing the saturation by 10% instead.


 54.0400, 53.6605,
48.0667

 54.0400, 53.6605,
48.0667


392.4584,
400.8141, 395.5728

 38.8644, 38.3303,
33.5193


 95.2895, 95.5756,
88.6703

 26.8345, 26.2391,
22.2502


122.0942,
122.9293, 115.5636

 17.5849, 17.0026,
13.8408


153.5060,
155.0596, 147.4093

 10.7503, 10.2364,
7.8725

189.8901,
192.3509, 184.6260

 5.9652, 5.5560,
3.9269

231.6121,
235.1876, 227.6321

 2.8644, 2.5770,
1.5853

279.0373,

 1.0825, 0.9151,

283.9541, 276.8463

0.2803

332.5309,
339.0348, 332.6870

■ 0.0104, 0.0000,
0.0000

■ 0.0000, 0.0000,
0.0000

■ 54.0400, 53.6605,
48.0667

■ 54.0400, 53.6605,
48.0667

■ 49.0948, 46.8977,
36.7756

■ 59.6495, 61.2079,
61.2546

■ 44.7839, 40.8866,
27.2901

■ 65.9432, 69.5572,
76.4183

■ 41.0812, 35.6025,
19.5161

■ 72.9456, 78.7341,
93.6362

■ 37.9570, 31.0165,
13.3498

■ 79.6304, 88.3416,
107.4624

■ 35.3789, 27.0976,
8.6760

■ 82.1291, 93.3390,
108.2953

■ 33.3109, 23.8123,
5.3638

■ 31.7117, 21.1237,
3.2592

■ 30.5221, 18.9857,
2.1191

■ 30.4172, 18.7952,
2.0247

Harmonies

Analogous

The Analogous color harmony consists of three colors that are next to each other on the color wheel.



55.6443, 53.6605, 53.2892



54.0400, 53.6605, 48.0667



51.6576, 53.6605, 45.6615

Triad

The Triadic color harmony groups three colors that are evenly spaced from another and form a triangle on the color wheel.



54.0400, 53.6605, 48.0667



46.3252, 53.6605, 56.5792



52.8745, 53.6605, 72.3104

Complementary

The Complementary color scheme is a pair of colors which are on the opposite of each other on the color wheel.



54.0400, 53.6605, 48.0667



51.4295, 56.7824, 73.2157

Split Complementary

Split-complementary colors differ from the complementary color scheme. The scheme consists of three colors, the original color and two neighbors of the complement color.



50.3533, 53.6605, 73.3745



54.0400, 53.6605, 48.0667



46.6267, 53.6605, 63.8852

Square

The Square scheme is like the rectangle color scheme, but the four colors are evenly spaced on the color wheel.



54.0400, 53.6605, 48.0667



47.2437, 53.6605, 50.3042



48.0814, 53.6605, 70.1787



54.9560, 53.6605, 67.3806

Rectangle

The Rectangle color scheme consists of four colors that form a rectangle on the color wheel.



54.0400, 53.6605, 48.0667



49.9712, 53.6605, 45.8273



48.0814, 53.6605, 70.1787



52.0483, 53.6605, 73.1477

Sweetspot

The Sweet Spot groups the original color and five complimentary colors.



54.0415, 53.6629, 48.0678



89.4409, 92.5680, 95.3580



54.4309, 49.5721, 63.2105



19.0181, 19.6458, 20.1089



0.0000, 0.0000, 0.0000



20.3446, 21.4041, 23.3091

Same Dimension

The Same Dimension uses a secret algorithm to generate beautiful new colors.



54.0415, 53.6629, 48.0678



75.5320, 73.8380, 62.7049



58.7312, 63.0424, 49.6311



12.7415, 13.0573, 13.0095



18.0899, 11.2971, 1.2271



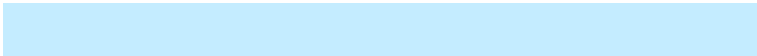
1.1647, 0.8286, 0.0985

Inverse Universe

The Inverse Universe completely reimagines the original color for something new.



51.4295, 56.7824, 73.2157



71.0162, 79.2230, 106.1564



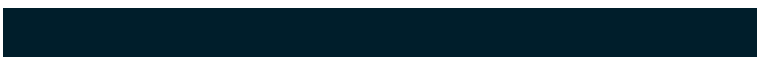
46.9085, 47.7405, 71.7087



12.4446, 13.4126, 15.8705



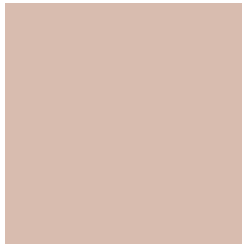
13.6583, 15.5783, 40.7402



0.8967, 1.0855, 2.4816

Previews

White Background



This preview shows how the XYZ color 54.0400, 53.6605, 48.0667 looks on a white background.

Color Contrast Check

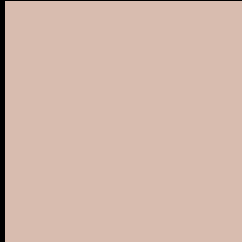
Large Text (above 18pt) WCAG AA × Fail

Any Text WCAG AA × Fail

Large Text (above 18pt) WCAG AAA × Fail

Any Text WCAG AAA × Fail

Black Background



This preview shows how the XYZ color 54.0400, 53.6605, 48.0667 looks on a black background.

Color Contrast Check

Large Text (above 18pt) WCAG AA ✓ Pass

Any Text WCAG AA ✓ Pass

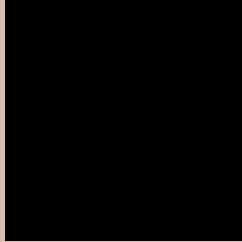
Large Text (above 18pt) WCAG AAA ✓ Pass

Any Text WCAG AAA ✓ Pass

If you want to check with other color combinations, try the [Color Contrast Checker](#).

XYZ 54.0400, 53.6605, 48.0667

Background



This preview shows how black text looks on a background with the XYZ color 54.0400, 53.6605, 48.0667.



This preview shows how white text looks on a background with the XYZ color 54.0400, 53.6605,

Color Blindness Simulation

Color vision deficiency is a very complex topic, and I could not describe the different causes any better than Wikipedia does, so if you want to learn more, you should check out their [article about color blindness](#).

Dichromacy



Original Color

54.0400, 53.6605, 48.0667

Protanopia

51.1932, 53.7718, 49.8003

Deuteranopia

54.7216, 53.6959, 48.0376



Tritanopia

56.6627, 53.4646, 61.3661

Trichromacy



Original Color

54.0400, 53.6605, 48.0667

Protanomaly

52.0202, 53.5577, 49.1909

Deuteranomaly

54.4216, 53.5412, 48.0236

Tritanomaly

55.5567, 53.3211, 56.0790

Monochromacy



Original Color

54.0400, 53.6605, 48.0667

Achromatopsia

51.8711, 54.5724, 59.4294

Achromatomaly

52.5553, 54.0266, 55.2352

CSS Examples

Text

The CSS property to change the color of the text to XYZ 54.0400, 53.6605, 48.0667 is called "color". The color property can be set on classes, ids or directly on the HTML element.

This example shows how text in the color `rgb(216, 188, 175)` looks like.

```
.text, #text, p{  
    color:rgb(216, 188, 175)  
}
```

If you want to add a text shadow in that color use the text-shadow property, you can generate a text shadow directly with our [CSS Text Shadow Generator](#).

Here you see how black text with a 4 pixel rgb(216, 188, 175) colored shadow looks like.

```
.shadow{ text-shadow: 4px 4px 2px rgb(216, 188, 175) }
```

Border

The CSS property to change the border of an element to XYZ 54.0400, 53.6605, 48.0667 is called "border". The border property can be set on classes, ids or directly on the HTML element.

This example shows the color as border, it can be applied via the CSS property "border" or "border-color".

```
.border, #border, table{ border:4px solid rgb(216, 188, 175) }
```


If only the border color should be changed use the property border-color.

```
.border{ border-color:rgb(216, 188, 175) }
```

If you want to add a box shadow in that color use:

Here you see how a box with a 4 pixel rgb(216, 188, 175) colored shadow looks like.

```
.boxshadow{ -moz-box-shadow:4px 4px 4px  
4px rgb(216, 188, 175); -webkit-box-  
shadow:4px 4px 4px 4px rgb(216, 188, 175);  
box-shadow:4px 4px 4px 4px rgb(216, 188,  
175) }
```

Background

The CSS property to change the background color of an element to XYZ 54.0400, 53.6605, 48.0667 is called "background". The background property can be set on classes, ids or directly on the HTML element.

```
.background, #background, body{  
background: rgb(216, 188, 175) }
```

If only the background color should be changed can be used:

```
.background{ background-color: rgb(216,  
188, 175) }
```

This example shows the color as background, it is applied via the CSS property "background".

To optimize and compress your CSS code, you can use our [online CSS compressor and optimizer](#) based on csstidy. If you want to create a linear or radial gradient as background or border, check our [CSS Gradient Generator](#).

Hey! You found this booklet interesting? Support Converting Colors with the new Membership Option!

The pro membership hides all ads, plus gives you double the colors in the color bucket, and more awesome pro features!

[Learn more, Memberships starting at \\$2.50/m!](#)

**Follow me
on Twitter!**

@ConvertingColor