

Converting Colors

XYZ(54.0701, 54.4636, 59.5607)

Have a look what the booklet for
XYZ(54.0701, 54.4636, 59.5607)
contains.

XYZ(53.9347, 54.3235, 59.2726)	3
<i>Conversions</i>	4
<i>Details</i>	6
<i>Harmonies</i>	12
<i>Previews</i>	24
<i>Color Blindness Simulation</i>	28
<i>CSS Examples</i>	31

Color

**XYZ(53.9347, 54.3235,
59.2726)**

Conversions

Conversions Part 1

Format	Color
Hex	CEBFC3
RGB	206, 191, 195
RGB Percent	81%, 75%, 76%
CMY	0.1922, 0.2510, 0.2353
CMYK	0.00, 0.07, 0.05, 0.19
HSL	344°, 13%, 78%
HSV	344°, 7%, 81%
XYZ	53.9347, 54.3235, 59.2726
YIQ	195.9410, 7.6560, 4.4240

Conversions

Conversions Part 2

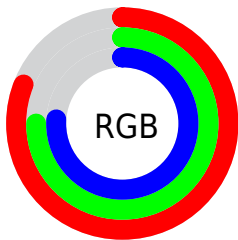
Format	Color
R _Y B	206, 191, 195
Decimal	13549507
CIE Lab	78.65, 5.97, -0.11
CIE LCh	79, 5.976, 358.911
Yxy	54.3235, 0.3219, 0.3243
Android (android.graphics.Color)	4291739587 (0xFFCEBFC3)
YUV	195.9410, -0.4639, 8.8217
Hunter-Lab	73.7045, 1.6380, 3.9126

Details

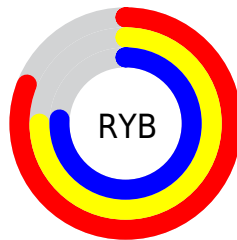
The XYZ color **53.9347, 54.3235, 59.2726** is a light color, and the websafe version is hex **CCCCCC**. A complement of this color would be **54.2198, 59.4846, 64.5039**, and the grayscale version is **52.4347, 55.1654, 60.0751**.

A 20% lighter version of the original color is **92.0715, 94.8098, 105.5429**, and **26.8451, 26.7754, 28.9526** is the 20% darker color. If you saturate the color by 10%, you get **48.1318, 45.3143, 49.3317**, and if you desaturate by 10%, it is **60.5455, 64.6704, 70.3372**.

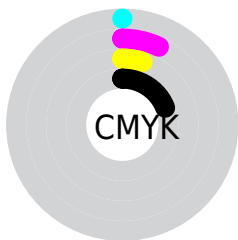
Distribution



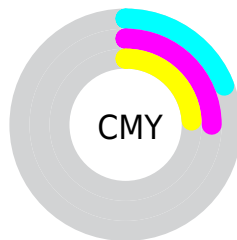
- Red (81%)
- Green (75%)
- Blue (76%)



- Red (81%)
- Yellow (75%)
- Blue (76%)



- Cyan (0%)
- Magenta (7%)
- Yellow (5%)
- Black (19%)



- Cyan (19%)
- Magenta (25%)
- Yellow (24%)

Brightness & Saturation Gradients

These gradients show how the XYZ color 53.9347, 54.3235, 59.2726 changes by changing the brightness by 10 percent. The first figure shows a shift by +10% for each color and the second figure -10%.

Similar to the brightness gradients but the following saturation gradients show a change of the XYZ color 53.9347, 54.3235, 59.2726 by changing the saturation by 10% instead.

■ 53.9347, 54.3235,
59.2726

■ 53.9347, 54.3235,
59.2726

392.0634,
403.3424, 439.6414

■ 38.7799, 38.8604,
42.4111

■ 95.1358, 96.5491,
105.3068

■ 26.7685, 26.6511,
29.0954

121.9129,
124.0803, 135.3166

■ 17.5351, 17.3114,
18.9068

153.2947,
156.4030, 170.5462

■ 10.7144, 10.4567,
11.4268

189.6467,
193.9015, 211.4143

■ 5.9410, 5.7028,
6.2369

231.3342,
236.9604, 258.3393

■ 2.8496, 2.6652,
2.9186

278.7226,

■ 1.0747, 0.9596,

285.9639, 311.7398

1.0532

332.1772,
341.2964, 372.0343

■ 0.0038, 0.0000,
0.0000

■ 0.0000, 0.0000,
0.0000

■ 53.9347, 54.3235,
59.2726

■ 53.9347, 54.3235,
59.2726

■ 48.1318, 45.3143,
49.3317

■ 60.5455, 64.6704,
70.3372

■ 43.1007, 37.5810,
40.4752

■ 67.9891, 76.3990,
82.5559

■ 38.8097, 31.0678,
32.6667

■ 76.2952, 89.5606,
95.9624

■ 35.2227, 25.7120,
25.8664

■ 79.2639, 91.8620,
108.1612

■ 32.3009, 21.4449,
20.0319

■ 30.0012, 18.1909,
15.1176

■ 28.2755, 15.8645,
11.0739

■ 27.0679, 14.3659,
7.8461

■ 26.3044, 13.5595,
5.3699

Harmonies

Analogous

The Analogous color harmony consists of three colors that are next to each other on the color wheel.



53.6003, 54.3235, 62.5682



53.9347, 54.3235, 59.2726



53.6445, 54.3235, 56.0629

Triad

The Triadic color harmony groups three colors that are evenly spaced from another and form a triangle on the color wheel.



53.9347, 54.3235, 59.2726



50.5437, 54.3235, 53.6414



50.4701, 54.3235, 64.8900

Complementary

The Complementary color scheme is a pair of colors which are on the opposite of each other on the color wheel.



53.9347, 54.3235, 59.2726



54.2198, 59.4846, 64.5039

Split Complementary

Split-complementary colors differ from the complementary color scheme. The scheme consists of three colors, the original color and two neighbors of the complement color.



49.6721, 54.3235, 62.3464



53.9347, 54.3235, 59.2726



49.7141, 54.3235, 55.8568

Square

The Square scheme is like the rectangle color scheme, but the four colors are evenly spaced on the color wheel.



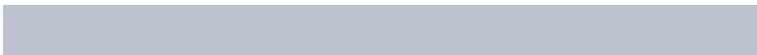
53.9347, 54.3235, 59.2726



51.6760, 54.3235, 52.8873



49.3975, 54.3235, 59.0257



51.5898, 54.3235, 65.8865

Rectangle

The Rectangle color scheme consists of four colors that form a rectangle on the color wheel.



53.9347, 54.3235, 59.2726



53.1384, 54.3235, 54.3856



49.3975, 54.3235, 59.0257



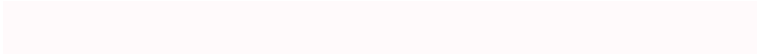
50.1560, 54.3235, 64.1829

Sweetspot

The Sweet Spot groups the original color and five complimentary colors.



53.9362, 54.3259, 59.2738



92.8480, 96.5505, 105.2236



54.1303, 54.2768, 66.0167



19.8964, 20.7019, 22.5608



0.0000, 0.0000, 0.0000



20.3446, 21.4041, 23.3091

Same Dimension

The Same Dimension uses a secret algorithm to generate beautiful new colors.



53.9362, 54.3259, 59.2738



85.5677, 85.1842, 92.9493



54.2625, 55.6921, 57.1827



11.3331, 11.2620, 12.2885



16.1314, 8.2631, 3.1447



0.8644, 0.4392, 0.3319

Inverse Universe

The Inverse Universe completely reimagines the original color for something new.



53.9362, 54.3259, 59.2738



85.5677, 85.1842, 92.9493



53.8663, 58.0103, 66.7513



11.3331, 11.2620, 12.2885



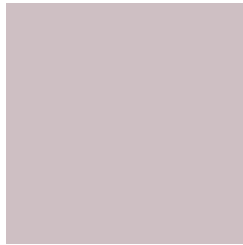
16.1314, 8.2631, 3.1447



0.8644, 0.4392, 0.3319

Previews

White Background



This preview shows how the XYZ color 53.9347, 54.3235, 59.2726 looks on a white background.

Color Contrast Check

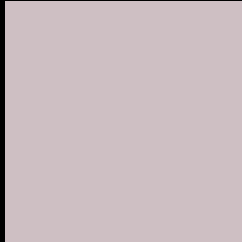
Large Text (above 18pt) WCAG AA × Fail

Any Text WCAG AA × Fail

Large Text (above 18pt) WCAG AAA × Fail

Any Text WCAG AAA × Fail

Black Background



This preview shows how the XYZ color 53.9347, 54.3235, 59.2726 looks on a black background.

Color Contrast Check

Large Text (above 18pt) WCAG AA ✓ Pass

Any Text WCAG AA ✓ Pass

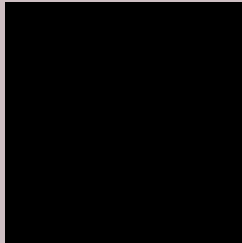
Large Text (above 18pt) WCAG AAA ✓ Pass

Any Text WCAG AAA ✓ Pass

If you want to check with other color combinations, try the [Color Contrast Checker](#).

XYZ 53.9347, 54.3235, 59.2726

Background



This preview shows how black text looks on a background with the XYZ color 53.9347, 54.3235, 59.2726.



This preview shows how white text looks on a background with the XYZ color 53.9347, 54.3235,

Color Blindness Simulation

Color vision deficiency is a very complex topic, and I could not describe the different causes any better than Wikipedia does, so if you want to learn more, you should check out their [article about color blindness](#).

Dichromacy



Original Color

53.9347, 54.3235, 59.2726

Protanopia

52.3958, 54.4851, 60.5784

Deuteranopia

55.4885, 54.4815, 59.2212



Tritanopia

55.0447, 54.4519, 64.7359

Trichromacy



Original Color

53.9347, 54.3235, 59.2726

Protanomaly

52.8532, 54.4048, 59.9401

Deuteranomaly

54.8421, 54.4687, 59.2528

Tritanomaly

54.6882, 54.3094, 62.8587

Monochromacy



Original Color

53.9347, 54.3235, 59.2726

Achromatopsia

52.4687, 55.2011, 60.1140

Achromatomaly

53.0750, 54.8485, 60.0140

CSS Examples

Text

The CSS property to change the color of the text to XYZ 53.9347, 54.3235, 59.2726 is called "color". The color property can be set on classes, ids or directly on the HTML element.

This example shows how text in the color `rgb(206, 191, 195)` looks like.

```
.text, #text, p{  
    color:rgb(206, 191, 195)  
}
```

If you want to add a text shadow in that color use the text-shadow property, you can generate a text shadow directly with our [CSS Text Shadow Generator](#).

Here you see how black text with a 4 pixel rgb(206, 191, 195) colored shadow looks like.

```
.shadow{ text-shadow: 4px 4px 2px rgb(206, 191, 195) }
```

Border

The CSS property to change the border of an element to XYZ 53.9347, 54.3235, 59.2726 is called "border". The border property can be set on classes, ids or directly on the HTML element.

This example shows the color as border, it can be applied via the CSS property "border" or "border-color".

```
.border, #border, table{ border:4px solid rgb(206, 191, 195) }
```


If only the border color should be changed use the property `border-color`.

```
.border{ border-color:rgb(206, 191, 195) }
```

If you want to add a box shadow in that color use:

Here you see how a box with a 4 pixel `rgb(206, 191, 195)` colored shadow looks like.

```
.boxshadow{ -moz-box-shadow:4px 4px 4px  
4px rgb(206, 191, 195); -webkit-box-  
shadow:4px 4px 4px 4px rgb(206, 191, 195);  
box-shadow:4px 4px 4px 4px rgb(206, 191,  
195) }
```

Background

The CSS property to change the background color of an element to XYZ 53.9347, 54.3235, 59.2726 is called "background". The background property can be set on classes, ids or directly on the HTML element.

```
.background, #background, body{  
background: rgb(206, 191, 195) }
```

If only the background color should be changed can be used:

```
.background{ background-color: rgb(206,  
191, 195) }
```

This example shows the color as background, it is applied via the CSS property "background".

To optimize and compress your CSS code, you can use our [online CSS compressor and optimizer](#) based on csstidy. If you want to create a linear or radial gradient as background or border, check our [CSS Gradient Generator](#).

Hey! You found this booklet interesting? Support Converting Colors with the new Membership Option!

The pro membership hides all ads, plus gives you double the colors in the color bucket, and more awesome pro features!

[Learn more, Memberships starting at \\$2.50/m!](#)

**Follow me
on Twitter!**

@ConvertingColor