

Converting Colors

XYZ(54.1824, 54.5334, 39.7775)

Have a look what the booklet for
XYZ(54.1824, 54.5334, 39.7775)
contains.

XYZ(54.0145, 54.4769, 39.5665)	3
<i>Conversions</i>	4
<i>Details</i>	6
<i>Harmonies</i>	12
<i>Previews</i>	24
<i>Color Blindness Simulation</i>	28
<i>CSS Examples</i>	31

Color

**XYZ(54.0145, 54.4769,
39.5665)**

Conversions

Conversions Part 1

Format	Color
Hex	DCBE9D
RGB	220, 190, 157
RGB Percent	86%, 75%, 62%
CMY	0.1373, 0.2549, 0.3843
CMYK	0.00, 0.14, 0.29, 0.14
HSL	31°, 47%, 74%
HSV	31°, 29%, 86%
XYZ	54.0145, 54.4769, 39.5665
YIQ	195.2080, 28.4730, -3.9030

Conversions

Conversions Part 2

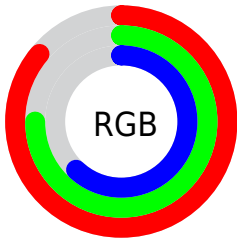
Format	Color
R_{YB}	214, 220, 157
Decimal	14466717
CIE _{Lab}	78.74, 5.80, 20.62
CIE _{LCh}	79, 21.422, 74.304
Yxy	54.4769, 0.3648, 0.3679
Android (android.graphics.Color)	4292656797 (0xFFDCBE9D)
YUV	195.2080, -18.8365, 21.7426
Hunter-Lab	73.8085, 1.4650, 19.8823

Details

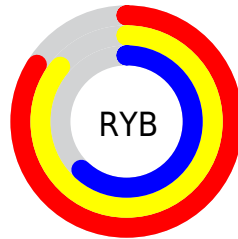
The XYZ color **54.0145, 54.4769, 39.5665** is a light color, and the websafe version is hex **FFCC99**. A complement of this color would be **44.5928, 47.8747, 74.6009**, and the grayscale version is **52.0939, 54.8068, 59.6846**.

A 20% lighter version of the original color is **86.0794, 91.9250, 75.4938**, and **26.8570, 26.8244, 17.3978** is the 20% darker color. If you saturate the color by 10%, you get **50.1153, 49.4185, 29.8196**, and if you desaturate by 10%, it is **58.4178, 60.0018, 51.1512**.

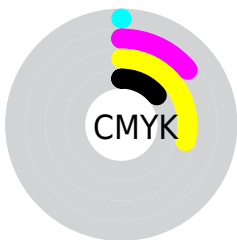
Distribution



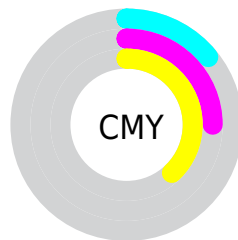
- Red (86%)
- Green (75%)
- Blue (62%)



- Red (84%)
- Yellow (86%)
- Blue (62%)



- Cyan (0%)
- Magenta (14%)
- Yellow (29%)
- Black (14%)





- Cyan (14%)
- Magenta (25%)
- Yellow (38%)

Brightness & Saturation Gradients


These gradients show how the XYZ color 54.0145, 54.4769, 39.5665 changes by changing the brightness by 10 percent. The first figure shows a shift by +10% for each color and the second figure -10%.

Similar to the brightness gradients but the following saturation gradients show a change of the XYZ color 54.0145, 54.4769, 39.5665 by changing the saturation by 10% instead.

 54.0145, 54.4769,
39.5665


 54.0145, 54.4769,
39.5665


392.3628,
403.9260, 359.7907

 38.8440, 38.9831,
26.8895


 95.2523, 96.7741,
75.7328

 26.8185, 26.7466,
17.2585


 122.0503,
124.3463, 100.0592

 17.5729, 17.3830,
10.2551


153.4548,
156.7133, 129.1057

 10.7416, 10.5079,
5.4606

189.8312,
194.2597, 163.2911

 5.9594, 5.7370,
2.4565

231.5448,
237.3697, 203.0337

 2.8608, 2.6858,
0.8170

278.9611,

 1.0806, 0.9700,

286.4279, 248.7521

0.0000

332.4453,
341.8185, 300.8649

0.0088, 0.0000,
0.0000

0.0000, 0.0000,
0.0000

54.0145, 54.4769,
39.5665

54.0145, 54.4769,
39.5665

50.1153, 49.4185,
29.8196

58.4178, 60.0018,
51.1512

46.6945, 44.8049,
21.8104

63.3412, 65.9989,
64.6600

43.7300, 40.6237,
15.4342

68.8048, 72.4834,
80.1775

41.1963, 36.8588,
10.5736

74.8266, 79.4676,
97.7826

■ 39.0643, 33.4926,
7.0953

■ 79.4303, 86.1656,
107.0529

■ 37.3006, 30.5055,
4.8420

■ 82.6443, 92.5936,
108.1243

■ 35.8562, 27.8712,
3.5760

■ 83.3253, 93.9557,
108.3513

■ 35.6751, 27.5353,
3.4346

Harmonies

Analogous

The Analogous color harmony consists of three colors that are next to each other on the color wheel.



57.8318, 54.4769, 44.4635



54.0145, 54.4769, 39.5665



49.7913, 54.4769, 39.4546

Triad

The Triadic color harmony groups three colors that are evenly spaced from another and form a triangle on the color wheel.



54.0145, 54.4769, 39.5665



44.2773, 54.4769, 65.2708



57.6813, 54.4769, 77.6333

Complementary

The Complementary color scheme is a pair of colors which are on the opposite of each other on the color wheel.



54.0145, 54.4769, 39.5665



44.5928, 47.8747, 74.6009

Split Complementary

Split-complementary colors differ from the complementary color scheme. The scheme consists of three colors, the original color and two neighbors of the complement color.



53.8182, 54.4769, 84.9249



54.0145, 54.4769, 39.5665



46.1634, 54.4769, 77.1549

Square

The Square scheme is like the rectangle color scheme, but the four colors are evenly spaced on the color wheel.



54.0145, 54.4769, 39.5665



44.3234, 54.4769, 53.2242



49.6054, 54.4769, 84.7387



60.0262, 54.4769, 65.8560

Rectangle

The Rectangle color scheme consists of four colors that form a rectangle on the color wheel.



54.0145, 54.4769, 39.5665



47.3206, 54.4769, 42.0515



49.6054, 54.4769, 84.7387



56.5082, 54.4769, 80.7575

Sweetspot

The Sweet Spot groups the original color and five complimentary colors.



54.0159, 54.4794, 39.5676



88.1853, 91.8344, 89.4591



50.5906, 42.9374, 52.8886



18.6503, 19.3851, 18.5221



0.0000, 0.0000, 0.0000



20.3446, 21.4041, 23.3091

Same Dimension

The Same Dimension uses a secret algorithm to generate beautiful new colors.



54.0159, 54.4794, 39.5676



72.3118, 72.0502, 47.2883



60.8777, 68.6734, 41.9457



13.6177, 14.1747, 13.7438



21.0497, 16.3850, 2.0532



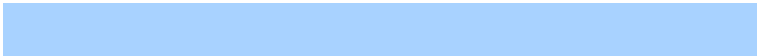
1.4498, 1.2337, 0.1617

Inverse Universe

The Inverse Universe completely reimagines the original color for something new.



44.5928, 47.8747, 74.6009



57.2053, 61.4636, 103.4564



39.0863, 36.5561, 72.7064



12.8475, 13.6348, 16.6068



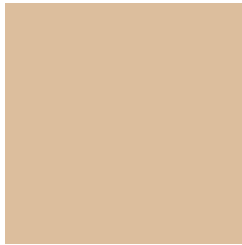
10.6412, 9.1519, 40.9440



0.7753, 0.7647, 2.6812

Previews

White Background



This preview shows how the XYZ color 54.0145, 54.4769, 39.5665 looks on a white background.

Color Contrast Check

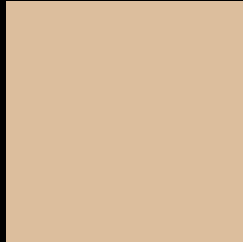
Large Text (above 18pt) WCAG AA × Fail

Any Text WCAG AA × Fail

Large Text (above 18pt) WCAG AAA × Fail

Any Text WCAG AAA × Fail

Black Background



This preview shows how the XYZ color 54.0145, 54.4769, 39.5665 looks on a black background.

Color Contrast Check

Large Text (above 18pt) WCAG AA ✓ Pass

Any Text WCAG AA ✓ Pass

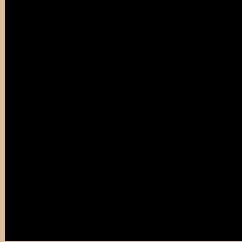
Large Text (above 18pt) WCAG AAA ✓ Pass

Any Text WCAG AAA ✓ Pass

If you want to check with other color combinations, try the [Color Contrast Checker](#).

XYZ 54.0145, 54.4769, 39.5665

Background



This preview shows how black text looks on a background with the XYZ color 54.0145, 54.4769, 39.5665.



This preview shows how white text looks on a background with the XYZ color 54.0145, 54.4769,

39.5665.

Color Blindness Simulation

Color vision deficiency is a very complex topic, and I could not describe the different causes any better than Wikipedia does, so if you want to learn more, you should check out their [article about color blindness](#).

Dichromacy



Original Color

54.0145, 54.4769, 39.5665

Protanopia

51.5052, 54.7988, 40.6635

Deuteranopia

55.6204, 54.3402, 39.9049



Tritanopia

58.5006, 54.4121, 61.4521

Trichromacy



Original Color

54.0145, 54.4769, 39.5665

Protanomaly

52.3929, 54.6056, 40.1263

Deuteranomaly

54.8952, 54.2824, 39.9320

Tritanomaly

56.6421, 54.2665, 52.8365

Monochromacy



Original Color

54.0145, 54.4769, 39.5665

Achromatopsia

51.8711, 54.5724, 59.4294

Achromatomaly

52.3123, 54.3135, 51.4425

CSS Examples

Text

The CSS property to change the color of the text to XYZ 54.0145, 54.4769, 39.5665 is called "color". The color property can be set on classes, ids or directly on the HTML element.

This example shows how text in the color `rgb(220, 190, 157)` looks like.

```
.text, #text, p{  
    color:rgb(220, 190, 157)  
}
```

If you want to add a text shadow in that color use the text-shadow property, you can generate a text shadow directly with our [CSS Text Shadow Generator](#).

Here you see how black text with a 4 pixel rgb(220, 190, 157) colored shadow looks like.

```
.shadow{ text-shadow: 4px 4px 2px rgb(220, 190, 157) }
```

Border

The CSS property to change the border of an element to XYZ 54.0145, 54.4769, 39.5665 is called "border". The border property can be set on classes, ids or directly on the HTML element.

This example shows the color as border, it can be applied via the CSS property "border" or "border-color".

```
.border, #border, table{ border:4px solid rgb(220, 190, 157) }
```


If only the border color should be changed use the property `border-color`.

```
.border{ border-color:rgb(220, 190, 157) }
```

If you want to add a box shadow in that color use:

Here you see how a box with a 4 pixel `rgb(220, 190, 157)` colored shadow looks like.

```
.boxshadow{ -moz-box-shadow:4px 4px 4px  
4px rgb(220, 190, 157); -webkit-box-  
shadow:4px 4px 4px 4px rgb(220, 190, 157);  
box-shadow:4px 4px 4px 4px rgb(220, 190,  
157) }
```

Background

The CSS property to change the background color of an element to XYZ 54.0145, 54.4769, 39.5665 is called "background". The background property can be set on classes, ids or directly on the HTML element.

```
.background, #background, body{  
background: rgb(220, 190, 157) }
```

If only the background color should be changed can be used:

```
.background{ background-color: rgb(220,  
190, 157) }
```

This example shows the color as background, it is applied via the CSS property "background".

To optimize and compress your CSS code, you can use our [online CSS compressor and optimizer](#) based on csstidy. If you want to create a linear or radial gradient as background or border, check our [CSS Gradient Generator](#).

Hey! You found this booklet interesting? Support Converting Colors with the new Membership Option!

The pro membership hides all ads, plus gives you double the colors in the color bucket, and more awesome pro features!

[Learn more, Memberships starting at \\$2.50/m!](#)

**Follow me
on Twitter!**

@ConvertingColor