

# Converting Colors

XYZ(54.2760, 52.3387, 56.5319)

Have a look what the booklet for  
XYZ(54.2760, 52.3387, 56.5319)  
contains.

<b>XYZ(54.2760, 52.3387, 56.5319)</b> .....	3
<b><i>Conversions</i></b> .....	4
<b><i>Details</i></b> .....	6
<b><i>Harmonies</i></b> .....	12
<b><i>Previews</i></b> .....	24
<b><i>Color Blindness Simulation</i></b> .....	28
<b><i>CSS Examples</i></b> .....	31

# Color

**XYZ(54.2760, 52.3387,  
56.5319)**

# Conversions

## Conversions Part 1

Format	Color
Hex	D6B8BF
RGB	214, 184, 191
RGB Percent	84%, 72%, 75%
CMY	0.1608, 0.2784, 0.2510
CMYK	0.00, 0.14, 0.11, 0.16
HSL	346°, 27%, 78%
HSV	346°, 14%, 84%
XYZ	54.2760, 52.3387, 56.5319
YIQ	193.7680, 15.6330, 8.5370

# Conversions

## Conversions Part 2

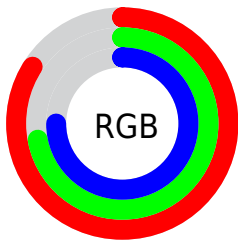
Format	Color
<a href="#">RYB</a>	<a href="#">214, 184, 191</a>
Decimal	<a href="#">14071999</a>
CIELab	<a href="#">77.48, 11.88, 0.43</a>
CIElCh	<a href="#">77, 11.884, 2.079</a>
Yxy	<a href="#">52.3387, 0.3327, 0.3208</a>
Android (android.graphics.Color)	<a href="#">4292262079</a> ( <a href="#">0xFFD6B8BF</a> )
YUV	<a href="#">193.7680, -1.3646, 17.7435</a>
Hunter-Lab	<a href="#">72.3455, 7.3120, 4.3117</a>

# Details

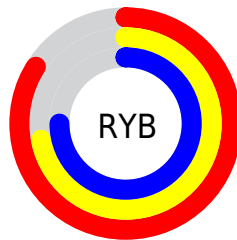
The XYZ color **54.2760, 52.3387, 56.5319** is a light color, and the websafe version is hex **FFCCCC**. A complement of this color would be **55.0783, 62.7898, 68.2513**, and the grayscale version is **51.1436, 53.8070, 58.5959**.

A 20% lighter version of the original color is **89.1886, 90.2956, 100.7237**, and **27.0018, 25.4385, 27.5317** is the 20% darker color. If you saturate the color by 10%, you get **48.4569, 43.4298, 46.1767**, and if you desaturate by 10%, it is **60.9729, 62.6781, 68.1791**.

# Distribution



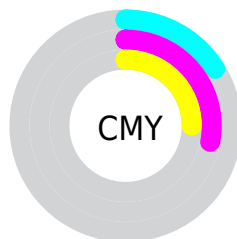
- Red (84%)
- Green (72%)
- Blue (75%)



- Red (84%)
- Yellow (72%)
- Blue (75%)



- Cyan (0%)
- Magenta (14%)
- Yellow (11%)
- Black (16%)




- Cyan (16%)
- Magenta (28%)
- Yellow (25%)


# Brightness & Saturation Gradients

These gradients show how the XYZ color 54.2760, 52.3387, 56.5319 changes by changing the brightness by 10 percent. The first figure shows a shift by +10% for each color and the second figure -10%.


Similar to the brightness gradients but the following saturation gradients show a change of the XYZ color 54.2760, 52.3387, 56.5319 by changing the saturation by 10% instead.





 54.2760, 52.3387,  
56.5319

 54.2760, 52.3387,  
56.5319


393.3428,  
395.7428, 429.1375

 39.0539, 37.2751,  
40.2227


 95.6339, 93.6306,  
101.2754

 26.9826, 25.4206,  
27.3971


122.5004,  
120.6276, 130.5467

 17.6967, 16.3907,  
17.6366


153.9791,  
152.3713, 164.9759

 10.8308, 9.8010,  
10.5227

190.4353,  
189.2460, 204.9814

 6.0196, 5.2672,  
5.6368

232.2345,  
231.6361, 250.9817

 2.8978, 2.4049,  
2.5603

279.7419,

 1.0999, 0.8284,

279.9260, 303.3955

0.8719

333.3229,  
334.5001, 362.6412

■ 0.0251, 0.0000,  
0.0000

■ 0.0000, 0.0000,  
0.0000

■ 54.2760, 52.3387,  
56.5319

■ 54.2760, 52.3387,  
56.5319

■ 48.4569, 43.4298,  
46.1767

■ 60.9729, 62.6781,  
68.1791

■ 43.4743, 35.8815,  
37.0651

■ 68.5777, 74.5000,  
81.1578

■ 39.2904, 29.6286,  
29.1507

■ 77.1244, 87.8623,  
95.5097

■ 35.8626, 24.5976,  
22.3825

■ 81.5418, 93.0363,  
108.2678

■ 33.1440, 20.7079,  
16.7060

■ 31.0827, 17.8688,  
12.0621

■ 29.6191, 15.9758,  
8.3855

■ 28.6818, 14.9026,  
5.6025

■ 28.3057, 14.5258,  
4.3196

# Harmonies

## Analogous

The Analogous color harmony consists of three colors that are next to each other on the color wheel.



53.7378, 52.3387, 63.0969



54.2760, 52.3387, 56.5319



53.5699, 52.3387, 50.5519

# Triad

The Triadic color harmony groups three colors that are evenly spaced from another and form a triangle on the color wheel.



54.2760, 52.3387, 56.5319



47.4452, 52.3387, 46.9602



47.7136, 52.3387, 68.8679

# Complementary

The Complementary color scheme is a pair of colors which are on the opposite of each other on the color wheel.



54.2760, 52.3387, 56.5319



55.0783, 62.7898, 68.2513

# Split Complementary

Split-complementary colors differ from the complementary color scheme. The scheme consists of three colors, the original color and two neighbors of the complement color.



46.1092, 52.3387, 63.9483



54.2760, 52.3387, 56.5319



45.9576, 52.3387, 51.2866

# Square

The Square scheme is like the rectangle color scheme, but the four colors are evenly spaced on the color wheel.



54.2760, 52.3387, 56.5319



49.5869, 52.3387, 45.2958



45.4760, 52.3387, 57.4464



49.9062, 52.3387, 70.5366



# Rectangle

The Rectangle color scheme consists of four colors that form a rectangle on the color wheel.



54.2760, 52.3387, 56.5319



52.5008, 52.3387, 47.6109



45.4760, 52.3387, 57.4464



47.0900, 52.3387, 67.5218

# Sweetspot

The Sweet Spot groups the original color and five complimentary colors.



54.2775, 52.3410, 56.5330



90.6481, 93.1703, 101.3466



55.0119, 52.4039, 70.8344



19.2305, 19.6760, 21.3961



0.0000, 0.0000, 0.0000



20.3446, 21.4041, 23.3091



# Same Dimension

The Same Dimension uses a secret algorithm to generate beautiful new colors.



54.2775, 52.3410, 56.5330



77.8488, 73.4333, 79.0102



55.2346, 55.4582, 53.1435



12.5408, 12.4678, 13.5219



17.1424, 8.7933, 2.7878



1.0664, 0.5433, 0.3390



# Inverse Universe

The Inverse Universe completely reimagines the original color for something new.



54.2775, 52.3410, 56.5330



77.8488, 73.4333, 79.0102



53.9779, 59.1897, 72.1987



12.5408, 12.4678, 13.5219



17.1424, 8.7933, 2.7878

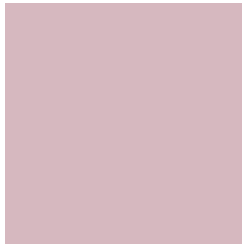


1.0664, 0.5433, 0.3390



# Previews

## White Background



This preview shows how the XYZ color 54.2760, 52.3387, 56.5319 looks on a white background.

## Color Contrast Check

Large Text (above 18pt) WCAG AA × Fail

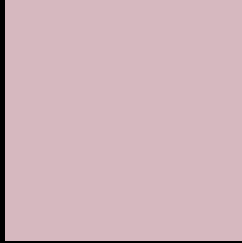
Any Text WCAG AA × Fail

Large Text (above 18pt) WCAG AAA × Fail

Any Text WCAG AAA × Fail



# Black Background



This preview shows how the XYZ color 54.2760, 52.3387, 56.5319 looks on a black background.

## Color Contrast Check

Large Text (above 18pt) WCAG AA ✓ Pass

Any Text WCAG AA ✓ Pass

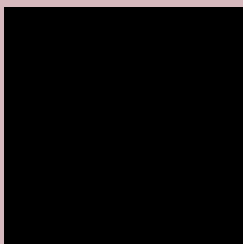
Large Text (above 18pt) WCAG AAA ✓ Pass

Any Text WCAG AAA ✓ Pass

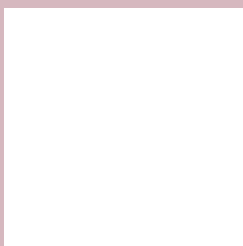
If you want to check with other color combinations, try the [Color Contrast Checker](#).

**XYZ 54.2760, 52.3387, 56.5319**

## **Background**



This preview shows how black text looks on a background with the XYZ color 54.2760, 52.3387, 56.5319.



This preview shows how white text looks on a background with the XYZ color 54.2760, 52.3387,



# Color Blindness Simulation

Color vision deficiency is a very complex topic, and I could not describe the different causes any better than Wikipedia does, so if you want to learn more, you should check out their [article about color blindness](#).

## Dichromacy



### Original Color

54.2760, 52.3387, 56.5319

### Protanopia

50.7293, 52.6711, 59.1226

### Deuteranopia

53.3313, 52.1611, 56.5475



## Tritanopia

55.0359, 52.3453, 60.0263

# Trichromacy



## Original Color

54.2760, 52.3387, 56.5319

## Protanomaly

51.8082, 52.2790, 58.3992

## Deuteranomaly

53.6169, 52.3084, 56.5608

## Tritanomaly

54.8081, 52.2542, 58.8271

# Monochromacy



## Original Color

54.2760, 52.3387, 56.5319

## Achromatopsia

51.2775, 53.9479, 58.7493

## Achromatomaly

52.1265, 53.0947, 57.9530

# CSS Examples

## Text

The CSS property to change the color of the text to XYZ 54.2760, 52.3387, 56.5319 is called "color". The color property can be set on classes, ids or directly on the HTML element.

This example shows how text in the color `rgb(214, 184, 191)` looks like.

```
.text, #text, p{  
    color:rgb(214, 184, 191)  
}
```

If you want to add a text shadow in that color use the text-shadow property, you can generate a text shadow directly with our [CSS Text Shadow Generator](#).

Here you see how black text with a 4 pixel rgb(214, 184, 191) colored shadow looks like.

```
.shadow{ text-shadow: 4px 4px 2px rgb(214, 184, 191) }
```

## Border

The CSS property to change the border of an element to XYZ 54.2760, 52.3387, 56.5319 is called "border". The border property can be set on classes, ids or directly on the HTML element.

This example shows the color as border, it can be applied via the CSS property "border" or "border-color".

```
.border, #border, table{ border:4px solid rgb(214, 184, 191) }
```



If only the border color should be changed use the property `border-color`.

```
.border{ border-color:rgb(214, 184, 191) }
```

If you want to add a box shadow in that color use:

Here you see how a box with a 4 pixel `rgb(214, 184, 191)` colored shadow looks like.

```
.boxshadow{ -moz-box-shadow:4px 4px 4px  
4px rgb(214, 184, 191); -webkit-box-  
shadow:4px 4px 4px 4px rgb(214, 184, 191);  
box-shadow:4px 4px 4px 4px rgb(214, 184,  
191) }
```

# Background

The CSS property to change the background color of an element to XYZ 54.2760, 52.3387, 56.5319 is called "background". The background property can be set on classes, ids or directly on the HTML element.

```
.background, #background, body{  
background: rgb(214, 184, 191) }
```

If only the background color should be changed can be used:

```
.background{ background-color: rgb(214,  
184, 191) }
```

This example shows the color as background, it is applied via the CSS property "background".

To optimize and compress your CSS code, you can use our [online CSS compressor and optimizer](#) based on csstidy. If you want to create a linear or radial gradient as background or border, check our [CSS Gradient Generator](#).

Hey! You found this booklet interesting? Support Converting Colors with the new Membership Option!

The pro membership hides all ads, plus gives you double the colors in the color bucket, and more awesome pro features!

**[Learn more, Memberships starting at \\$2.50/m!](#)**

**Follow me  
on Twitter!**

@ConvertingColor