

Converting Colors

XYZ(54.3109, 53.1242, 50.0393)

Have a look what the booklet for
XYZ(54.3109, 53.1242, 50.0393)
contains.

XYZ(54.3109, 53.1242, 50.0393)	3
<i>Conversions</i>	4
<i>Details</i>	6
<i>Harmonies</i>	12
<i>Previews</i>	24
<i>Color Blindness Simulation</i>	28
<i>CSS Examples</i>	31

Color

**XYZ(54.3109, 53.1242,
50.0393)**

Conversions

Conversions Part 1

Format	Color
Hex	D9BAB3
RGB	217, 186, 179
RGB Percent	85%, 73%, 70%
CMY	0.1490, 0.2706, 0.2980
CMYK	0.00, 0.14, 0.18, 0.15
HSL	11°, 33%, 78%
HSV	11°, 18%, 85%
XYZ	54.3109, 53.1242, 50.0393
YIQ	194.4710, 20.7230, 4.3950

Conversions

Conversions Part 2

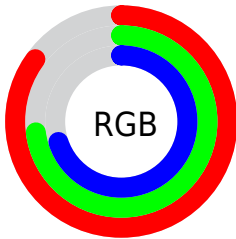
Format	Color
R _Y B	217, 188, 179
Decimal	14269107
CIE Lab	77.95, 9.96, 7.64
CIE LCh	78, 12.552, 37.489
Yxy	53.1242, 0.3449, 0.3374
Android (android.graphics.Color)	4292459187 (0xFFD9BAB3)
YUV	194.4710, -7.6272, 19.7579
Hunter-Lab	72.8863, 5.4573, 10.3156

Details

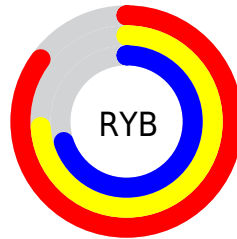
The XYZ color **54.3109, 53.1242, 50.0393** is a light color, and the websafe version is hex **FFCCCC**. A complement of this color would be **54.1610, 60.6853, 74.5051**, and the grayscale version is **51.5937, 54.2806, 59.1116**.

A 20% lighter version of the original color is **87.9875, 90.7624, 91.4787**, and **27.0537, 25.9628, 23.3241** is the 20% darker color. If you saturate the color by 10%, you get **48.7861, 45.3144, 38.2086**, and if you desaturate by 10%, it is **60.6460, 62.0008, 63.8453**.

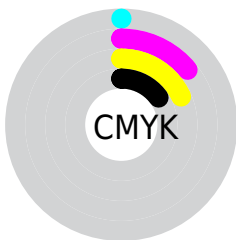
Distribution



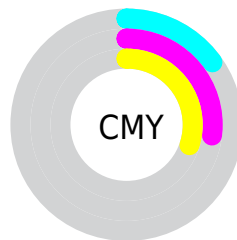
- Red (85%)
- Green (73%)
- Blue (70%)



- Red (85%)
- Yellow (74%)
- Blue (70%)



- Cyan (0%)
- Magenta (14%)
- Yellow (18%)
- Black (15%)





- Cyan (15%)
- Magenta (27%)
- Yellow (30%)

Brightness & Saturation Gradients


These gradients show how the XYZ color 54.3109, 53.1242, 50.0393 changes by changing the brightness by 10 percent. The first figure shows a shift by +10% for each color and the second figure -10%.


Similar to the brightness gradients but the following saturation gradients show a change of the XYZ color 54.3109, 53.1242, 50.0393 by changing the saturation by 10% instead.


 54.3109, 53.1242,
50.0393

 54.3109, 53.1242,
50.0393


393.4735,
398.7614, 403.5591

 39.0819, 37.9019,
35.0732


 95.6848, 94.7871,
91.6300

 27.0045, 25.9066,
23.4353

122.5605,
121.9965, 119.0917

 17.7132, 16.7538,
14.7069


154.0490,
153.9704, 151.5557

 10.8427, 10.0591,
8.4696

190.5159,
191.0933, 189.4406

 6.0277, 5.4382,
4.3048

232.3264,
233.7494, 233.1648

 2.9027, 2.5066,
1.7940

279.8460,

 1.1025, 0.8799,

282.3232, 283.1469

0.4240

333.4399,
337.1991, 339.8055

■ 0.0272, 0.0000,
0.0000

■ 0.0000, 0.0000,
0.0000

■ 54.3109, 53.1242,
50.0393

■ 54.3109, 53.1242,
50.0393

■ 48.7861, 45.3144,
38.2086

■ 60.6460, 62.0008,
63.8453

■ 44.0342, 38.5242,
28.2593

■ 67.8180, 71.9749,
79.7079

■ 40.0215, 32.7133,
20.0950

■ 75.8578, 83.0850,
97.7077

■ 36.7101, 27.8360,
13.6094

■ 82.4255, 93.4918,
108.3092

■ 34.0582, 23.8431,
8.6847

■ 32.0199, 20.6804,
5.1878

■ 30.5427, 18.2878,
2.9632

■ 29.5608, 16.5951,
1.8002

■ 29.3742, 16.2692,
1.5921

Harmonies

Analogous

The Analogous color harmony consists of three colors that are next to each other on the color wheel.



55.2927, 53.1242, 56.1083



54.3109, 53.1242, 50.0393



52.3120, 53.1242, 46.2890

Triad

The Triadic color harmony groups three colors that are evenly spaced from another and form a triangle on the color wheel.



54.3109, 53.1242, 50.0393



46.2785, 53.1242, 52.8461



51.1074, 53.1242, 72.2259

Complementary

The Complementary color scheme is a pair of colors which are on the opposite of each other on the color wheel.



54.3109, 53.1242, 50.0393



54.1610, 60.6853, 74.5051

Split Complementary

Split-complementary colors differ from the complementary color scheme. The scheme consists of three colors, the original color and two neighbors of the complement color.



48.7166, 53.1242, 71.1760



54.3109, 53.1242, 50.0393



45.9793, 53.1242, 59.6135

Square

The Square scheme is like the rectangle color scheme, but the four colors are evenly spaced on the color wheel.



54.3109, 53.1242, 50.0393



47.6890, 53.1242, 47.8161



46.8583, 53.1242, 66.4191



53.4048, 53.1242, 69.1824

Rectangle

The Rectangle color scheme consists of four colors that form a rectangle on the color wheel.



54.3109, 53.1242, 50.0393



50.6990, 53.1242, 45.4224



46.8583, 53.1242, 66.4191



50.2875, 53.1242, 72.3440

Sweetspot

The Sweet Spot groups the original color and five complimentary colors.



54.3124, 53.1266, 50.0404



89.8361, 92.7489, 97.3689



56.3730, 51.6474, 67.9929



19.0771, 19.6410, 20.5072



0.0000, 0.0000, 0.0000



20.3446, 21.4041, 23.3091

Same Dimension

The Same Dimension uses a secret algorithm to generate beautiful new colors.



54.3124, 53.1266, 50.0404



75.2095, 72.2460, 65.5172



58.5759, 61.6537, 51.4616



13.2492, 13.4378, 13.6210



17.8376, 9.9608, 0.9825



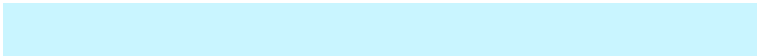
1.2140, 0.7622, 0.0831

Inverse Universe

The Inverse Universe completely reimagines the original color for something new.



54.1610, 60.6853, 74.5051



74.9503, 85.0834, 107.0802



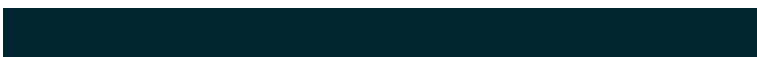
49.7535, 51.8703, 73.0359



13.2302, 14.4001, 16.7343



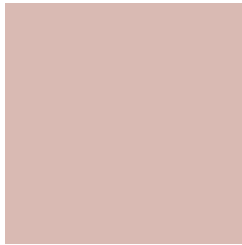
17.1714, 22.2123, 43.1208



1.1665, 1.5471, 2.8116

Previews

White Background



This preview shows how the XYZ color 54.3109, 53.1242, 50.0393 looks on a white background.

Color Contrast Check

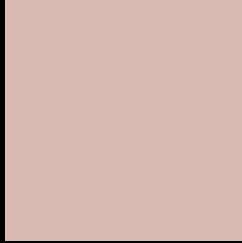
Large Text (above 18pt) WCAG AA × Fail

Any Text WCAG AA × Fail

Large Text (above 18pt) WCAG AAA × Fail

Any Text WCAG AAA × Fail

Black Background



This preview shows how the XYZ color 54.3109, 53.1242, 50.0393 looks on a black background.

Color Contrast Check

Large Text (above 18pt) WCAG AA ✓ Pass

Any Text WCAG AA ✓ Pass

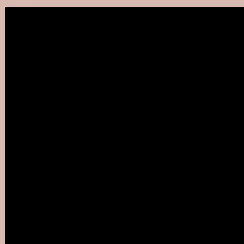
Large Text (above 18pt) WCAG AAA ✓ Pass

Any Text WCAG AAA ✓ Pass

If you want to check with other color combinations, try the [Color Contrast Checker](#).

XYZ 54.3109, 53.1242, 50.0393

Background



This preview shows how black text looks on a background with the XYZ color 54.3109, 53.1242, 50.0393.



This preview shows how white text looks on a background with the XYZ color 54.3109, 53.1242,

Color Blindness Simulation

Color vision deficiency is a very complex topic, and I could not describe the different causes any better than Wikipedia does, so if you want to learn more, you should check out their [article about color blindness](#).

Dichromacy



Original Color

54.3109, 53.1242, 50.0393

Protanopia

50.8463, 53.2188, 51.8483

Deuteranopia

54.3109, 53.1242, 50.0393



Tritanopia

56.2249, 52.9583, 60.0819

Trichromacy



Original Color

54.3109, 53.1242, 50.0393

Protanomaly

52.2075, 53.2849, 51.2494

Deuteranomaly

54.3109, 53.1242, 50.0393

Tritanomaly

55.3482, 52.9041, 56.0095

Monochromacy



Original Color

54.3109, 53.1242, 50.0393

Achromatopsia

51.2775, 53.9479, 58.7493

Achromatomaly

52.1732, 53.4923, 55.7193

CSS Examples

Text

The CSS property to change the color of the text to XYZ 54.3109, 53.1242, 50.0393 is called "color". The color property can be set on classes, ids or directly on the HTML element.

This example shows how text in the color `rgb(217, 186, 179)` looks like.

```
.text, #text, p{  
    color:rgb(217, 186, 179)  
}
```

If you want to add a text shadow in that color use the text-shadow property, you can generate a text shadow directly with our [CSS Text Shadow Generator](#).

Here you see how black text with a 4 pixel rgb(217, 186, 179) colored shadow looks like.

```
.shadow{ text-shadow: 4px 4px 2px rgb(217, 186, 179) }
```

Border

The CSS property to change the border of an element to XYZ 54.3109, 53.1242, 50.0393 is called "border". The border property can be set on classes, ids or directly on the HTML element.

This example shows the color as border, it can be applied via the CSS property "border" or "border-color".

```
.border, #border, table{ border:4px solid rgb(217, 186, 179) }
```


If only the border color should be changed use the property `border-color`.

```
.border{ border-color:rgb(217, 186, 179) }
```

If you want to add a box shadow in that color use:

Here you see how a box with a 4 pixel `rgb(217, 186, 179)` colored shadow looks like.

```
.boxshadow{ -moz-box-shadow:4px 4px 4px  
4px rgb(217, 186, 179); -webkit-box-  
shadow:4px 4px 4px 4px rgb(217, 186, 179);  
box-shadow:4px 4px 4px 4px rgb(217, 186,  
179) }
```

Background

The CSS property to change the background color of an element to XYZ 54.3109, 53.1242, 50.0393 is called "background". The background property can be set on classes, ids or directly on the HTML element.

```
.background, #background, body{  
background: rgb(217, 186, 179) }
```

If only the background color should be changed can be used:

```
.background{ background-color: rgb(217,  
186, 179) }
```

This example shows the color as background, it is applied via the CSS property "background".

To optimize and compress your CSS code, you can use our [online CSS compressor and optimizer](#) based on csstidy. If you want to create a linear or radial gradient as background or border, check our [CSS Gradient Generator](#).

Hey! You found this booklet interesting? Support Converting Colors with the new Membership Option!

The pro membership hides all ads, plus gives you double the colors in the color bucket, and more awesome pro features!

[Learn more, Memberships starting at \\$2.50/m!](#)

**Follow me
on Twitter!**

@ConvertingColor