

Converting Colors

XYZ(54.3651, 54.0788, 60.2056)

Have a look what the booklet for
XYZ(54.3651, 54.0788, 60.2056)
contains.

XYZ(54.5039, 54.2680, 60.4254)	3
<i>Conversions</i>	4
<i>Details</i>	6
<i>Harmonies</i>	12
<i>Previews</i>	24
<i>Color Blindness Simulation</i>	28
<i>CSS Examples</i>	31

Color

**XYZ(54.5039, 54.2680,
60.4254)**

Conversions

Conversions Part 1

Format	Color
Hex	D0BEC5
RGB	208, 190, 197
RGB Percent	82%, 75%, 77%
CMY	0.1843, 0.2549, 0.2274
CMYK	0.00, 0.09, 0.05, 0.18
HSL	337°, 16%, 78%
HSV	337°, 9%, 82%
XYZ	54.5039, 54.2680, 60.4254
YIQ	196.1800, 8.4810, 5.9930

Conversions

Conversions Part 2

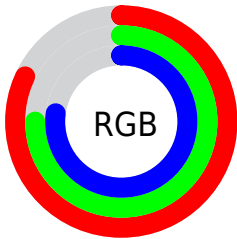
Format	Color
R _Y B	208, 190, 197
Decimal	13680325
CIE Lab	78.62, 7.56, -1.22
CIE LCh	79, 7.663, 350.831
Yxy	54.2680, 0.3221, 0.3207
Android (android.graphics.Color)	4291870405 (0xFFD0BEC5)
YUV	196.1800, 0.4043, 10.3661
Hunter-Lab	73.6668, 3.1499, 2.9340

Details

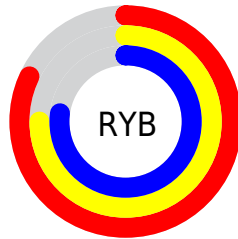
The XYZ color **54.5039, 54.2680, 60.4254** is a light color, and the websafe version is hex **CCCCCC**. A complement of this color would be **54.3357, 60.2773, 64.0322**, and the grayscale version is **52.5727, 55.3106, 60.2332**.

A 20% lighter version of the original color is **92.0852, 94.3273, 107.1195**, and **27.2300, 26.7445, 29.7136** is the 20% darker color. If you saturate the color by 10%, you get **48.9207, 45.3350, 51.6778**, and if you desaturate by 10%, it is **60.8560, 64.5407, 70.0369**.

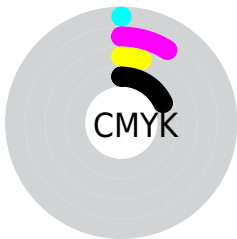
Distribution



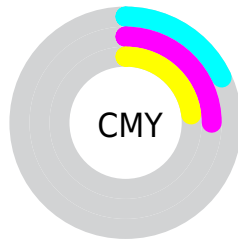
- Red (82%)
- Green (75%)
- Blue (77%)



- Red (82%)
- Yellow (75%)
- Blue (77%)



- Cyan (0%)
- Magenta (9%)
- Yellow (5%)
- Black (18%)



- Cyan (18%)
- Magenta (25%)
- Yellow (23%)

Brightness & Saturation Gradients

These gradients show how the XYZ color 54.5039, 54.2680, 60.4254 changes by changing the brightness by 10 percent. The first figure shows a shift by +10% for each color and the second figure -10%.

Similar to the brightness gradients but the following saturation gradients show a change of the XYZ color 54.5039, 54.2680, 60.4254 by changing the saturation by 10% instead.

■ 54.5039, 54.2680,
60.4254

■ 54.5039, 54.2680,
60.4254

394.1957,
403.1312, 444.0121

■ 39.2369, 38.8160,
43.3341

■ 95.9663, 96.4676,
106.9959

■ 27.1257, 26.6166,
29.8140

122.8924,
123.9840, 137.3122

■ 17.8047, 17.2855,
19.4466

154.4356,
156.2906, 172.8739

■ 10.9087, 10.4382,
11.8133

190.9613,
193.7719, 214.0995

■ 6.0723, 5.6905,
6.4957

232.8348,
236.8122, 261.4076

■ 2.9302, 2.6578,
3.0752

280.4215,

■ 1.1169, 0.9558,

285.7959, 315.2167

1.1331

334.0866,
341.1074, 375.9453

■ 0.0392, 0.0000,
0.0000

■ 0.0000, 0.0000,
0.0000

■ 54.5039, 54.2680,
60.4254

■ 54.5039, 54.2680,
60.4254

■ 48.9207, 45.3350,
51.6778

■ 60.8560, 64.5407,
70.0369

■ 44.0718, 37.6793,
43.7655

■ 68.0007, 76.1982,
80.5325

■ 39.9263, 31.2438,
36.6636

■ 75.9665, 89.2921,
91.9363

■ 36.4498, 25.9646,
30.3445

■ 78.6937, 91.6984,
102.2418

■ 33.6045, 21.7718,
24.7786

■ 79.8227, 92.1501,
108.1874

■ 31.3488, 18.5877,
19.9345

■ 29.6356, 16.3245,
15.7779

■ 28.4101, 14.8787,
12.2706

■ 27.5883, 14.0890,
9.3639

Harmonies

Analogous

The Analogous color harmony consists of three colors that are next to each other on the color wheel.



53.8671, 54.2680, 64.5053



54.5039, 54.2680, 60.4254



54.3454, 54.2680, 56.1768

Triad

The Triadic color harmony groups three colors that are evenly spaced from another and form a triangle on the color wheel.



54.5039, 54.2680, 60.4254



50.5531, 54.2680, 51.6430



49.7655, 54.2680, 65.7820

Complementary

The Complementary color scheme is a pair of colors which are on the opposite of each other on the color wheel.



54.5039, 54.2680, 60.4254



54.3357, 60.2773, 64.0322

Split Complementary

Split-complementary colors differ from the complementary color scheme. The scheme consists of three colors, the original color and two neighbors of the complement color.



48.9102, 54.2680, 62.0994



54.5039, 54.2680, 60.4254



49.3587, 54.2680, 53.9840

Square

The Square scheme is like the rectangle color scheme, but the four colors are evenly spaced on the color wheel.



54.5039, 54.2680, 60.4254



52.0448, 54.2680, 51.2438



48.7628, 54.2680, 57.7717



51.1182, 54.2680, 67.6958

Rectangle

The Rectangle color scheme consists of four colors that form a rectangle on the color wheel.



54.5039, 54.2680, 60.4254



53.8114, 54.2680, 53.8100



48.7628, 54.2680, 57.7717



49.4114, 54.2680, 64.7016

Sweetspot

The Sweet Spot groups the original color and five complimentary colors.



54.5054, 54.2704, 60.4266



91.9141, 94.9183, 104.1858



53.8342, 53.7733, 67.2171



19.4982, 20.0330, 22.0350



0.0000, 0.0000, 0.0000



20.3446, 21.4041, 23.3091

Same Dimension

The Same Dimension uses a secret algorithm to generate beautiful new colors.



54.5054, 54.2704, 60.4266



85.0390, 83.8322, 93.6813



54.1143, 54.7415, 56.4320



11.9963, 11.8833, 13.2562



17.1790, 8.7445, 5.8490



0.9990, 0.5043, 0.5295

Inverse Universe

The Inverse Universe completely reimagines the original color for something new.



54.5054, 54.2704, 60.4266



85.0390, 83.8322, 93.6813



54.7416, 59.7416, 68.3213



11.9963, 11.8833, 13.2562



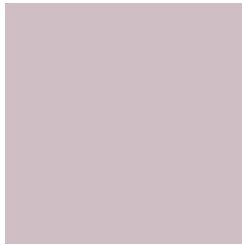
17.1790, 8.7445, 5.8490



0.9990, 0.5043, 0.5295

Previews

White Background



This preview shows how the XYZ color 54.5039, 54.2680, 60.4254 looks on a white background.

Color Contrast Check

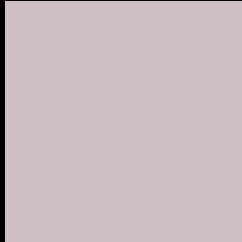
Large Text (above 18pt) WCAG AA × Fail

Any Text WCAG AA × Fail

Large Text (above 18pt) WCAG AAA × Fail

Any Text WCAG AAA × Fail

Black Background



This preview shows how the XYZ color 54.5039, 54.2680, 60.4254 looks on a black background.

Color Contrast Check

Large Text (above 18pt) WCAG AA ✓ Pass

Any Text WCAG AA ✓ Pass

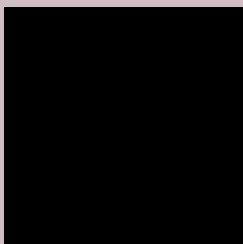
Large Text (above 18pt) WCAG AAA ✓ Pass

Any Text WCAG AAA ✓ Pass

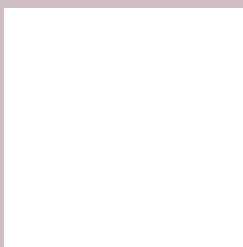
If you want to check with other color combinations, try the [Color Contrast Checker](#).

XYZ 54.5039, 54.2680, 60.4254

Background



This preview shows how black text looks on a background with the XYZ color 54.5039, 54.2680, 60.4254.



This preview shows how white text looks on a background with the XYZ color 54.5039, 54.2680,

60.4254.

Color Blindness Simulation

Color vision deficiency is a very complex topic, and I could not describe the different causes any better than Wikipedia does, so if you want to learn more, you should check out their [article about color blindness](#).

Dichromacy



Original Color

54.5039, 54.2680, 60.4254

Protanopia

52.6265, 54.5774, 61.7936

Deuteranopia

55.4270, 54.4235, 60.4068



Tritanopia

55.3912, 54.3101, 64.6902

Trichromacy



Original Color

54.5039, 54.2680, 60.4254

Protanomaly

53.3504, 54.6347, 61.1598

Deuteranomaly

55.1396, 54.2753, 60.3933

Tritanomaly

55.0347, 54.1675, 62.8131

Monochromacy



Original Color

54.5039, 54.2680, 60.4254

Achromatopsia

52.4687, 55.2011, 60.1140

Achromatomaly

53.0750, 54.8485, 60.0140

CSS Examples

Text

The CSS property to change the color of the text to XYZ 54.5039, 54.2680, 60.4254 is called "color". The color property can be set on classes, ids or directly on the HTML element.

This example shows how text in the color `rgb(208, 190, 197)` looks like.

```
.text, #text, p{  
    color:rgb(208, 190, 197)  
}
```

If you want to add a text shadow in that color use the text-shadow property, you can generate a text shadow directly with our [CSS Text Shadow Generator](#).

Here you see how black text with a 4 pixel rgb(208, 190, 197) colored shadow looks like.

```
.shadow{ text-shadow: 4px 4px 2px rgb(208, 190, 197) }
```

Border

The CSS property to change the border of an element to XYZ 54.5039, 54.2680, 60.4254 is called "border". The border property can be set on classes, ids or directly on the HTML element.

This example shows the color as border, it can be applied via the CSS property "border" or "border-color".

```
.border, #border, table{ border:4px solid rgb(208, 190, 197) }
```


If only the border color should be changed use the property `border-color`.

```
.border{ border-color:rgb(208, 190, 197) }
```

If you want to add a box shadow in that color use:

Here you see how a box with a 4 pixel `rgb(208, 190, 197)` colored shadow looks like.

```
.boxshadow{ -moz-box-shadow:4px 4px 4px 4px rgb(208, 190, 197); -webkit-box-shadow:4px 4px 4px 4px rgb(208, 190, 197); box-shadow:4px 4px 4px 4px rgb(208, 190, 197) }
```

Background

The CSS property to change the background color of an element to XYZ 54.5039, 54.2680, 60.4254 is called "background". The background property can be set on classes, ids or directly on the HTML element.

```
.background, #background, body{  
background: rgb(208, 190, 197) }
```

If only the background color should be changed can be used:

```
.background{ background-color: rgb(208,  
190, 197) }
```

This example shows the color as background, it is applied via the CSS property "background".

To optimize and compress your CSS code, you can use our [online CSS compressor and optimizer](#) based on csstidy. If you want to create a linear or radial gradient as background or border, check our [CSS Gradient Generator](#).

Hey! You found this booklet interesting? Support Converting Colors with the new Membership Option!

The pro membership hides all ads, plus gives you double the colors in the color bucket, and more awesome pro features!

[Learn more, Memberships starting at \\$2.50/m!](#)

**Follow me
on Twitter!**

@ConvertingColor