

Converting Colors

XYZ(54.3942, 52.1913, 52.0068)

Have a look what the booklet for
XYZ(54.3942, 52.1913, 52.0068)
contains.

XYZ(54.3942, 52.1913, 52.0068)	3
<i>Conversions</i>	4
<i>Details</i>	6
<i>Harmonies</i>	12
<i>Previews</i>	24
<i>Color Blindness Simulation</i>	28
<i>CSS Examples</i>	31

Color

**XYZ(54.3942, 52.1913,
52.0068)**

Conversions

Conversions Part 1

Format	Color
Hex	DAB7B7
RGB	218, 183, 183
RGB Percent	85%, 72%, 72%
CMY	0.1451, 0.2823, 0.2823
CMYK	0.00, 0.16, 0.16, 0.15
HSL	0°, 32%, 79%
HSV	0°, 16%, 85%
XYZ	54.3942, 52.1913, 52.0068
YIQ	193.4650, 20.8600, 7.4200

Conversions

Conversions Part 2

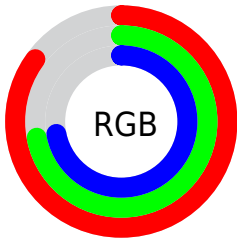
Format	Color
R _Y B	218, 183, 183
Decimal	14333879
CIE Lab	77.40, 12.56, 4.69
CIE LCh	77, 13.403, 20.476
Yxy	52.1913, 0.3430, 0.3291
Android (android.graphics.Color)	4292523959 (0xFFDAB7B7)
YUV	193.4650, -5.1592, 21.5172
Hunter-Lab	72.2435, 7.9715, 7.8887

Details

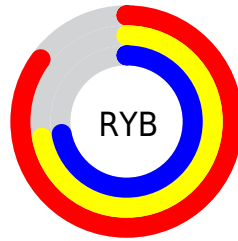
The XYZ color **54.3942, 52.1913, 52.0068** is a light color, and the websafe version is hex **FFCCCC**. A complement of this color would be **57.2544, 65.2706, 75.9111**, and the grayscale version is **50.9843, 53.6394, 58.4134**.

A 20% lighter version of the original color is **87.6865, 89.2250, 94.2619**, and **27.1162, 25.3635, 24.5856** is the 20% darker color. If you saturate the color by 10%, you get **48.1457, 43.0482, 39.5829**, and if you desaturate by 10%, it is **61.6934, 62.8721, 66.5160**.

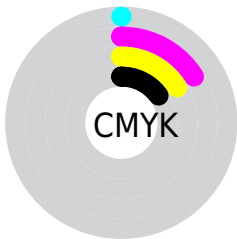
Distribution



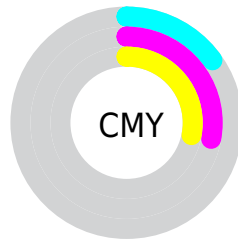
- Red (85%)
- Green (72%)
- Blue (72%)



- Red (85%)
- Yellow (72%)
- Blue (72%)



- Cyan (0%)
- Magenta (16%)
- Yellow (16%)
- Black (15%)





- Cyan (15%)
- Magenta (28%)
- Yellow (28%)

Brightness & Saturation Gradients


These gradients show how the XYZ color 54.3942, 52.1913, 52.0068 changes by changing the brightness by 10 percent. The first figure shows a shift by +10% for each color and the second figure -10%.


Similar to the brightness gradients but the following saturation gradients show a change of the XYZ color 54.3942, 52.1913, 52.0068 by changing the saturation by 10% instead.


 54.3942, 52.1913,
52.0068

 54.3942, 52.1913,
52.0068

393.7853,
395.1747, 411.4206

 39.1488, 37.1576,
36.6282

 95.8063, 93.4133,
94.5680

 27.0568, 25.3295,
24.6262


122.7037,
120.3704, 122.5876

 17.7527, 16.3227,
15.5823


154.2159,
152.0707, 155.6580

 10.8712, 9.7528,
9.0779

190.7082,
188.8986, 194.1977

 6.0469, 5.2354,
4.6946

232.5459,
231.2386, 238.6253

 2.9146, 2.3860,
2.0136

280.0944,

 1.1087, 0.8187,

279.4750, 289.3593

0.5636

333.7191,
333.9923, 346.8182

■ 0.0324, 0.0000,
0.0000

■ 0.0000, 0.0000,
0.0000

■ 54.3942, 52.1913,
52.0068

■ 54.3942, 52.1913,
52.0068

■ 48.1457, 43.0482,
39.5829

■ 61.6934, 62.8721,
66.5160

■ 42.8954, 35.3656,
29.1455

■ 70.0838, 75.1495,
83.1965

■ 38.5929, 29.0698,
20.5925

■ 79.6093, 89.0877,
102.1337

■ 35.1818, 24.0784,
13.8117

■ 82.7237, 93.6456,
108.3231

■ 32.5997, 20.2998,
8.6788

■ 30.7759, 17.6309,
5.0536

■ 29.6282, 15.9514,
2.7726

■ 29.0544, 15.1116,
1.6325

■ 28.9140, 14.9061,
1.3532

Harmonies

Analogous

The Analogous color harmony consists of three colors that are next to each other on the color wheel.



54.6549, 52.1913, 59.2079



54.3942, 52.1913, 52.0068



52.8267, 52.1913, 46.5697

Triad

The Triadic color harmony groups three colors that are evenly spaced from another and form a triangle on the color wheel.



54.3942, 52.1913, 52.0068



45.8817, 52.1913, 48.2669



48.7909, 52.1913, 72.0019

Complementary

The Complementary color scheme is a pair of colors which are on the opposite of each other on the color wheel.



54.3942, 52.1913, 52.0068



57.2544, 65.2706, 75.9111

Split Complementary

Split-complementary colors differ from the complementary color scheme. The scheme consists of three colors, the original color and two neighbors of the complement color.



46.5194, 52.1913, 68.4907



54.3942, 52.1913, 52.0068



44.8786, 52.1913, 54.5117

Square

The Square scheme is like the rectangle color scheme, but the four colors are evenly spaced on the color wheel.



54.3942, 52.1913, 52.0068



47.8932, 52.1913, 44.5437



45.1079, 52.1913, 61.9372



51.3597, 52.1913, 71.1843

Rectangle

The Rectangle color scheme consists of four colors that form a rectangle on the color wheel.



54.3942, 52.1913, 52.0068



51.2806, 52.1913, 44.4752



45.1079, 52.1913, 61.9372



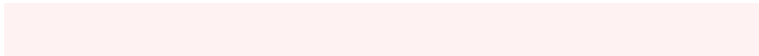
47.9687, 52.1913, 71.2780

Sweetspot

The Sweet Spot groups the original color and five complimentary colors.



54.3956, 52.1936, 52.0079



89.1316, 91.3399, 97.1340



58.5024, 53.8351, 73.6380



18.9067, 19.3000, 20.4504



0.0000, 0.0000, 0.0000



20.3446, 21.4041, 23.3091

Same Dimension

The Same Dimension uses a secret algorithm to generate beautiful new colors.



54.3956, 52.1936, 52.0079



74.6528, 70.1535, 68.3498



58.2316, 59.8655, 53.2865



13.0562, 13.0518, 13.5567



17.3224, 8.9303, 0.8107



1.1223, 0.5786, 0.0525

Inverse Universe

The Inverse Universe completely reimagines the original color for something new.



57.2544, 65.2706, 75.9111



79.4148, 91.9372, 108.1678



52.9543, 56.6705, 74.4777



13.4448, 14.8293, 16.8059



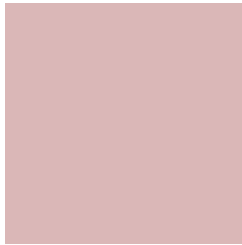
22.5983, 33.0659, 44.9297



1.4641, 2.1423, 2.9108

Previews

White Background



This preview shows how the XYZ color 54.3942, 52.1913, 52.0068 looks on a white background.

Color Contrast Check

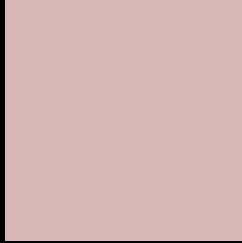
Large Text (above 18pt) WCAG AA × Fail

Any Text WCAG AA × Fail

Large Text (above 18pt) WCAG AAA × Fail

Any Text WCAG AAA × Fail

Black Background



This preview shows how the XYZ color 54.3942, 52.1913, 52.0068 looks on a black background.

Color Contrast Check

Large Text (above 18pt) WCAG AA ✓ Pass

Any Text WCAG AA ✓ Pass

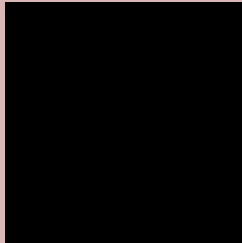
Large Text (above 18pt) WCAG AAA ✓ Pass

Any Text WCAG AAA ✓ Pass

If you want to check with other color combinations, try the [Color Contrast Checker](#).

XYZ 54.3942, 52.1913, 52.0068

Background



This preview shows how black text looks on a background with the XYZ color 54.3942, 52.1913, 52.0068.



This preview shows how white text looks on a background with the XYZ color 54.3942, 52.1913,

Color Blindness Simulation

Color vision deficiency is a very complex topic, and I could not describe the different causes any better than Wikipedia does, so if you want to learn more, you should check out their [article about color blindness](#).

Dichromacy



Original Color

54.3942, 52.1913, 52.0068

Protanopia

50.3654, 52.5852, 54.5091

Deuteranopia

53.3368, 52.2630, 52.0764



Tritanopia

55.8894, 52.2035, 58.7604

Trichromacy



Original Color

54.3942, 52.1913, 52.0068

Protanomaly

51.7480, 52.3490, 53.8313

Deuteranomaly

53.7121, 52.1469, 52.0342

Tritanomaly

55.3453, 52.2776, 56.4638

Monochromacy



Original Color

54.3942, 52.1913, 52.0068

Achromatopsia

50.6879, 53.3276, 58.0738

Achromatomaly

51.7400, 52.6259, 55.5749

CSS Examples

Text

The CSS property to change the color of the text to XYZ 54.3942, 52.1913, 52.0068 is called "color". The color property can be set on classes, ids or directly on the HTML element.

This example shows how text in the color rgb(218, 183, 183) looks like.

```
.text, #text, p{  
    color:rgb(218, 183, 183)  
}
```

If you want to add a text shadow in that color use the text-shadow property, you can generate a text shadow directly with our [CSS Text Shadow Generator](#).

Here you see how black text with a 4 pixel rgb(218, 183, 183) colored shadow looks like.

```
.shadow{ text-shadow: 4px 4px 2px rgb(218, 183, 183) }
```

Border

The CSS property to change the border of an element to XYZ 54.3942, 52.1913, 52.0068 is called "border". The border property can be set on classes, ids or directly on the HTML element.

This example shows the color as border, it can be applied via the CSS property "border" or "border-color".

```
.border, #border, table{ border:4px solid rgb(218, 183, 183) }
```


If only the border color should be changed use the property border-color.

```
.border{ border-color:rgb(218, 183, 183) }
```

If you want to add a box shadow in that color use:

Here you see how a box with a 4 pixel rgb(218, 183, 183) colored shadow looks like.

```
.boxshadow{ -moz-box-shadow:4px 4px 4px  
4px rgb(218, 183, 183); -webkit-box-  
shadow:4px 4px 4px 4px rgb(218, 183, 183);  
box-shadow:4px 4px 4px 4px rgb(218, 183,  
183) }
```

Background

The CSS property to change the background color of an element to XYZ 54.3942, 52.1913, 52.0068 is called "background". The background property can be set on classes, ids or directly on the HTML element.

```
.background, #background, body{  
background: rgb(218, 183, 183) }
```

If only the background color should be changed can be used:

```
.background{ background-color: rgb(218,  
183, 183) }
```

This example shows the color as background, it is applied via the CSS property "background".

To optimize and compress your CSS code, you can use our [online CSS compressor and optimizer](#) based on csstidy. If you want to create a linear or radial gradient as background or border, check our [CSS Gradient Generator](#).

Hey! You found this booklet interesting? Support Converting Colors with the new Membership Option!

The pro membership hides all ads, plus gives you double the colors in the color bucket, and more awesome pro features!

[Learn more, Memberships starting at \\$2.50/m!](#)

**Follow me
on Twitter!**

@ConvertingColor