

Converting Colors

XYZ(54.4685, 55.3875, 57.9534)

Have a look what the booklet for
XYZ(54.4685, 55.3875, 57.9534)
contains.

XYZ(54.3165, 55.2111, 57.6632)	3
<i>Conversions</i>	4
<i>Details</i>	6
<i>Harmonies</i>	12
<i>Previews</i>	24
<i>Color Blindness Simulation</i>	28
<i>CSS Examples</i>	31

Color

**XYZ(54.3165, 55.2111,
57.6632)**

Conversions

Conversions Part 1

Format	Color
Hex	CFC1C0
RGB	207, 193, 192
RGB Percent	81%, 76%, 75%
CMY	0.1882, 0.2431, 0.2471
CMYK	0.00, 0.07, 0.07, 0.19
HSL	4°, 14%, 78%
HSV	4°, 7%, 81%
XYZ	54.3165, 55.2111, 57.6632
YIQ	197.0720, 8.6650, 2.6570

Conversions

Conversions Part 2

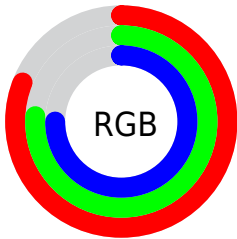
Format	Color
R_{YB}	207, 193, 192
Decimal	13615552
CIE Lab	79.16, 4.74, 2.26
CIE LCh	79, 5.251, 25.516
Yxy	55.2111, 0.3249, 0.3302
Android (android.graphics.Color)	4291805632 (0xFFCFC1C0)
YUV	197.0720, -2.5005, 8.7069
Hunter-Lab	74.3042, 0.4516, 6.0014

Details

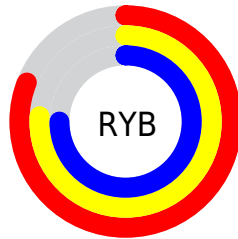
The XYZ color **54.3165, 55.2111, 57.6632** is a light color, and the websafe version is hex **CCCCCC**. A complement of this color would be **55.0718, 59.8530, 67.6823**, and the grayscale version is **53.1266, 55.8934, 60.8679**.

A 20% lighter version of the original color is **92.0590, 95.7887, 102.4440**, and **27.1752, 27.3926, 28.2811** is the 20% darker color. If you saturate the color by 10%, you get **48.1881, 46.3698, 45.0893**, and if you desaturate by 10%, it is **61.3283, 65.3016, 72.1244**.

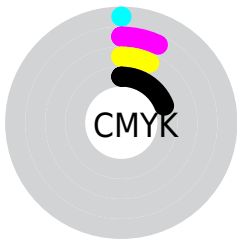
Distribution



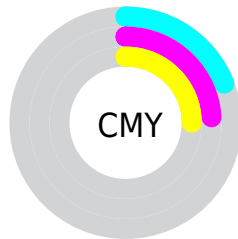
- Red (81%)
- Green (76%)
- Blue (75%)



- Red (81%)
- Yellow (76%)
- Blue (75%)



- Cyan (0%)
- Magenta (7%)
- Yellow (7%)
- Black (19%)



- Cyan (19%)
- Magenta (24%)
- Yellow (25%)

Brightness & Saturation Gradients

These gradients show how the XYZ color 54.3165, 55.2111, 57.6632 changes by changing the brightness by 10 percent. The first figure shows a shift by +10% for each color and the second figure -10%.

Similar to the brightness gradients but the following saturation gradients show a change of the XYZ color 54.3165, 55.2111, 57.6632 by changing the saturation by 10% instead.

■ 54.3165, 55.2111,
57.6632

■ 54.3165, 55.2111,
57.6632

393.4945,
406.7116, 433.4929

■ 39.0864, 39.5708,
41.1250

■ 95.6930, 97.8502,
102.9422

■ 27.0080, 27.2040,
28.0964

122.5701,
125.6177, 132.5200

■ 17.7158, 17.7265,
18.1586

154.0603,
158.1964, 167.2816

■ 10.8446, 10.7538,
10.8933

190.5288,
195.9707, 207.6453

■ 6.0290, 5.9015,
5.8819

232.3412,
239.3250, 254.0298

■ 2.9035, 2.7853,
2.7058

279.8627,

■ 1.1030, 1.0207,

288.6437, 306.8535

0.9463

333.4587,
344.3111, 366.5350

■ 0.0276, 0.0000,
0.0000

■ 0.0000, 0.0000,
0.0000

■ 54.3165, 55.2111,
57.6632

■ 54.3165, 55.2111,
57.6632

■ 48.1881, 46.3698,
45.0893

■ 61.3283, 65.3016,
72.1244

■ 42.9035, 38.7221,
34.3215

■ 69.2518, 76.6797,
88.5426

■ 38.4274, 32.2193,
25.2779

■ 78.1197, 89.3910,
106.9882

■ 34.7196, 26.8060,
17.8690

■ 79.5424, 92.0055,
108.1743

■ 31.7369, 22.4228,
11.9970

■ 29.4316, 19.0043,
7.5540

■ 27.7505, 16.4775,
4.4179

■ 26.6321, 14.7593,
2.4461

■ 25.9994, 13.7495,
1.4473

Harmonies

Analogous

The Analogous color harmony consists of three colors that are next to each other on the color wheel.



54.5116, 55.2111, 60.5679



54.3165, 55.2111, 57.6632



53.6259, 55.2111, 55.4820

Triad

The Triadic color harmony groups three colors that are evenly spaced from another and form a triangle on the color wheel.



54.3165, 55.2111, 57.6632



50.8326, 55.2111, 56.9063



52.3191, 55.2111, 66.0556

Complementary

The Complementary color scheme is a pair of colors which are on the opposite of each other on the color wheel.



54.3165, 55.2111, 57.6632



55.0718, 59.8530, 67.6823

Split Complementary

Split-complementary colors differ from the complementary color scheme. The scheme consists of three colors, the original color and two neighbors of the complement color.



51.3436, 55.2111, 65.0000



54.3165, 55.2111, 57.6632



50.4927, 55.2111, 59.6653

Square

The Square scheme is like the rectangle color scheme, but the four colors are evenly spaced on the color wheel.



54.3165, 55.2111, 57.6632



51.6131, 55.2111, 55.0553



50.6785, 55.2111, 62.6364



53.3495, 55.2111, 65.4766

Rectangle

The Rectangle color scheme consists of four colors that form a rectangle on the color wheel.



54.3165, 55.2111, 57.6632



52.9822, 55.2111, 54.6982



50.6785, 55.2111, 62.6364



51.9740, 55.2111, 65.8792

Sweetspot

The Sweet Spot groups the original color and five complimentary colors.



54.3180, 55.2135, 57.6644



92.7403, 96.6771, 104.1329



55.7230, 55.4217, 66.1537



19.8744, 20.7277, 22.3386



0.0000, 0.0000, 0.0000



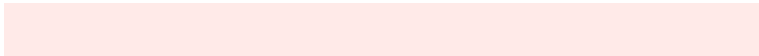
20.3446, 21.4041, 23.3091

Same Dimension

The Same Dimension uses a secret algorithm to generate beautiful new colors.



54.3180, 55.2135, 57.6644



85.1176, 85.6990, 88.4366



56.0175, 58.6124, 58.2309



11.8714, 11.9334, 12.2897



16.3351, 8.6032, 0.7996



0.9361, 0.5266, 0.0523

Inverse Universe

The Inverse Universe completely reimagines the original color for something new.



55.0718, 59.8530, 67.6823



86.6170, 94.9283, 108.3655



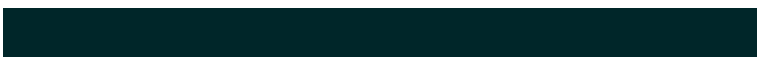
53.3100, 56.3294, 67.0950



12.0878, 13.2659, 15.1671



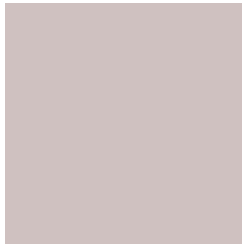
19.1594, 26.9655, 41.3875



1.0921, 1.5494, 2.3211

Previews

White Background



This preview shows how the XYZ color 54.3165, 55.2111, 57.6632 looks on a white background.

Color Contrast Check

Large Text (above 18pt) WCAG AA × Fail

Any Text WCAG AA × Fail

Large Text (above 18pt) WCAG AAA × Fail

Any Text WCAG AAA × Fail

Black Background



This preview shows how the XYZ color 54.3165, 55.2111, 57.6632 looks on a black background.

Color Contrast Check

Large Text (above 18pt) WCAG AA ✓ Pass

Any Text WCAG AA ✓ Pass

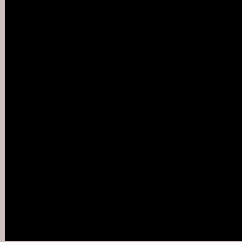
Large Text (above 18pt) WCAG AAA ✓ Pass

Any Text WCAG AAA ✓ Pass

If you want to check with other color combinations, try the [Color Contrast Checker](#).

XYZ 54.3165, 55.2111, 57.6632

Background



This preview shows how black text looks on a background with the XYZ color 54.3165, 55.2111, 57.6632.



This preview shows how white text looks on a background with the XYZ color 54.3165, 55.2111,

57.6632.

Color Blindness Simulation

Color vision deficiency is a very complex topic, and I could not describe the different causes any better than Wikipedia does, so if you want to learn more, you should check out their [article about color blindness](#).

Dichromacy



Original Color

54.3165, 55.2111, 57.6632

Protanopia

52.9602, 55.1598, 58.3077

Deuteranopia

56.3580, 55.2761, 58.1510



Tritanopia

56.0659, 55.2731, 66.1063

Trichromacy



Original Color

54.3165, 55.2111, 57.6632

Protanomaly

53.5460, 55.1303, 58.2711

Deuteranomaly

55.6970, 55.2580, 58.1824

Tritanomaly

55.4047, 55.3262, 63.0172

Monochromacy



Original Color

54.3165, 55.2111, 57.6632

Achromatopsia

53.0703, 55.8340, 60.8033

Achromatomaly

53.6776, 55.8375, 59.5784

CSS Examples

Text

The CSS property to change the color of the text to XYZ 54.3165, 55.2111, 57.6632 is called "color". The color property can be set on classes, ids or directly on the HTML element.

This example shows how text in the color rgb(207, 193, 192) looks like.

```
.text, #text, p{  
    color:rgb(207, 193, 192)  
}
```

If you want to add a text shadow in that color use the text-shadow property, you can generate a text shadow directly with our [CSS Text Shadow Generator](#).

Here you see how black text with a 4 pixel rgb(207, 193, 192) colored shadow looks like.

```
.shadow{ text-shadow: 4px 4px 2px rgb(207, 193, 192) }
```

Border

The CSS property to change the border of an element to XYZ 54.3165, 55.2111, 57.6632 is called "border". The border property can be set on classes, ids or directly on the HTML element.

This example shows the color as border, it can be applied via the CSS property "border" or "border-color".

```
.border, #border, table{ border:4px solid rgb(207, 193, 192) }
```


If only the border color should be changed use the property `border-color`.

```
.border{ border-color:rgb(207, 193, 192) }
```

If you want to add a box shadow in that color use:

Here you see how a box with a 4 pixel `rgb(207, 193, 192)` colored shadow looks like.

```
.boxshadow{ -moz-box-shadow:4px 4px 4px  
4px rgb(207, 193, 192); -webkit-box-  
shadow:4px 4px 4px 4px rgb(207, 193, 192);  
box-shadow:4px 4px 4px 4px rgb(207, 193,  
192) }
```

Background

The CSS property to change the background color of an element to XYZ 54.3165, 55.2111, 57.6632 is called "background". The background property can be set on classes, ids or directly on the HTML element.

```
.background, #background, body{  
background: rgb(207, 193, 192) }
```

If only the background color should be changed can be used:

```
.background{ background-color: rgb(207,  
193, 192) }
```

This example shows the color as background, it is applied via the CSS property "background".

To optimize and compress your CSS code, you can use our [online CSS compressor and optimizer](#) based on csstidy. If you want to create a linear or radial gradient as background or border, check our [CSS Gradient Generator](#).

Hey! You found this booklet interesting? Support Converting Colors with the new Membership Option!

The pro membership hides all ads, plus gives you double the colors in the color bucket, and more awesome pro features!

[Learn more, Memberships starting at \\$2.50/m!](#)

**Follow me
on Twitter!**

@ConvertingColor