

Converting Colors

XYZ(54.5467, 52.1836, 55.9127)

Have a look what the booklet for
XYZ(54.5467, 52.1836, 55.9127)
contains.

XYZ(54.5467, 52.1836, 55.9127)	3
<i>Conversions</i>	4
<i>Details</i>	6
<i>Harmonies</i>	12
<i>Previews</i>	24
<i>Color Blindness Simulation</i>	28
<i>CSS Examples</i>	31

Color

**XYZ(54.5467, 52.1836,
55.9127)**

Conversions

Conversions Part 1

Format	Color
Hex	D8B7BE
RGB	216, 183, 190
RGB Percent	85%, 72%, 75%
CMY	0.1529, 0.2823, 0.2549
CMYK	0.00, 0.15, 0.12, 0.15
HSL	347°, 30%, 78%
HSV	347°, 15%, 85%
XYZ	54.5467, 52.1836, 55.9127
YIQ	193.6650, 17.4210, 9.1730

Conversions

Conversions Part 2

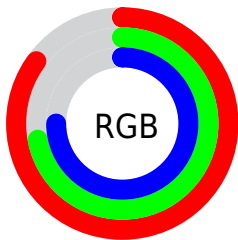
Format	Color
R _Y B	216, 183, 190
Decimal	14202814
CIE Lab	77.39, 12.96, 0.86
CIE LCh	77, 12.992, 3.799
Yxy	52.1836, 0.3354, 0.3208
Android (android.graphics.Color)	4292392894 (0xFFD8B7BE)
YUV	193.6650, -1.8068, 19.5878
Hunter-Lab	72.2382, 8.3675, 4.6760

Details

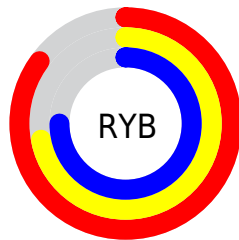
The XYZ color **54.5467, 52.1836, 55.9127** is a light color, and the websafe version is hex **FFCCCC**. A complement of this color would be **55.5950, 63.7839, 69.7062**, and the grayscale version is **51.0846, 53.7449, 58.5282**.

A 20% lighter version of the original color is **88.7411, 89.6468, 99.8152**, and **27.1959, 25.3485, 27.1263** is the 20% darker color. If you saturate the color by 10%, you get **48.6760, 43.2470, 45.3075**, and if you desaturate by 10%, it is **61.3213, 62.5791, 67.8922**.

Distribution



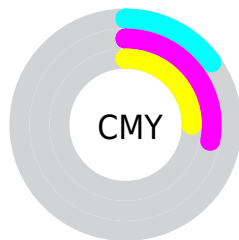
- Red (85%)
- Green (72%)
- Blue (75%)



- Red (85%)
- Yellow (72%)
- Blue (75%)



- Cyan (0%)
- Magenta (15%)
- Yellow (12%)
- Black (15%)



- Cyan (15%)
- Magenta (28%)
- Yellow (25%)

Brightness & Saturation Gradients


These gradients show how the XYZ color 54.5467, 52.1836, 55.9127 changes by changing the brightness by 10 percent. The first figure shows a shift by +10% for each color and the second figure -10%.


Similar to the brightness gradients but the following saturation gradients show a change of the XYZ color 54.5467, 52.1836, 55.9127 by changing the saturation by 10% instead.


 54.5467, 52.1836,
55.9127

 54.5467, 52.1836,
55.9127


394.3557,
395.1450, 426.7415

 39.2713, 37.1514,
39.7294

 96.0287, 93.4020,
100.3614

 27.1525, 25.3248,
27.0155


122.9660,
120.3569, 129.4640

 17.8250, 16.3192,
17.3523


154.5213,
152.0550, 163.7100

 10.9233, 9.7503,
10.3214

191.0600,
188.8805, 203.5181

 6.0822, 5.2337,
5.5042

232.9475,
231.2179, 249.3067

 2.9363, 2.3850,
2.4821

280.5490,

 1.1202, 0.8182,

279.4515, 301.4945

0.8307

334.2300,
333.9657, 360.4999

■ 0.0419, 0.0000,
0.0000

■ 0.0000, 0.0000,
0.0000

■ 54.5467, 52.1836,
55.9127

■ 54.5467, 52.1836,
55.9127

■ 48.6760, 43.2470,
45.3075

■ 61.3213, 62.5791,
67.8922

■ 43.6663, 35.6973,
36.0239

■ 69.0317, 74.4876,
81.2899

■ 39.4777, 29.4666,
28.0103

■ 77.7133, 87.9689,
96.1514

■ 36.0654, 24.4788,
21.2105

■ 82.1292, 93.3391,
108.2953

■ 33.3803, 20.6497,
15.5642

■ 31.3673, 17.8849,
11.0053

■ 29.9633, 16.0747,
7.4611

■ 29.0921, 15.0855,
4.8487

■ 28.8084, 14.7948,
3.9013

Harmonies

Analogous

The Analogous color harmony consists of three colors that are next to each other on the color wheel.



54.0338, 52.1836, 63.1105



54.5467, 52.1836, 55.9127



53.6977, 52.1836, 49.5065

Triad

The Triadic color harmony groups three colors that are evenly spaced from another and form a triangle on the color wheel.



54.5467, 52.1836, 55.9127



46.9752, 52.1836, 46.1391



47.5087, 52.1836, 70.0744

Complementary

The Complementary color scheme is a pair of colors which are on the opposite of each other on the color wheel.



54.5467, 52.1836, 55.9127



55.5950, 63.7839, 69.7062

Split Complementary

Split-complementary colors differ from the complementary color scheme. The scheme consists of three colors, the original color and two neighbors of the complement color.



45.7143, 52.1836, 64.8184



54.5467, 52.1836, 55.9127



45.4136, 52.1836, 50.9603

Square

The Square scheme is like the rectangle color scheme, but the four colors are evenly spaced on the color wheel.



54.5467, 52.1836, 55.9127



49.2815, 52.1836, 44.1710



44.9598, 52.1836, 57.7352



49.9178, 52.1836, 71.6769

Rectangle

The Rectangle color scheme consists of four colors that form a rectangle on the color wheel.



54.5467, 52.1836, 55.9127



52.4897, 52.1836, 46.4276



44.9598, 52.1836, 57.7352



46.8163, 52.1836, 68.6558

Sweetspot

The Sweet Spot groups the original color and five complimentary colors.



54.5482, 52.1859, 55.9138



89.5409, 91.5029, 99.2914



55.5820, 52.3607, 72.1436



19.0057, 19.3395, 20.9725



0.0000, 0.0000, 0.0000



20.3446, 21.4041, 23.3091

Same Dimension

The Same Dimension uses a secret algorithm to generate beautiful new colors.



54.5482, 52.1859, 55.9138



76.8291, 72.0157, 76.7532



55.7945, 55.8731, 52.6464



12.5299, 12.4635, 13.4648



17.0838, 8.7698, 2.4795



1.0614, 0.5413, 0.3125

Inverse Universe

The Inverse Universe completely reimagines the original color for something new.



54.5482, 52.1859, 55.9138



76.8291, 72.0157, 76.7532



54.1531, 59.4831, 73.5937



12.5299, 12.4635, 13.4648



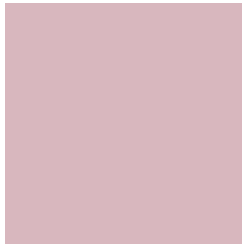
17.0838, 8.7698, 2.4795



1.0614, 0.5413, 0.3125

Previews

White Background



This preview shows how the XYZ color 54.5467, 52.1836, 55.9127 looks on a white background.

Color Contrast Check

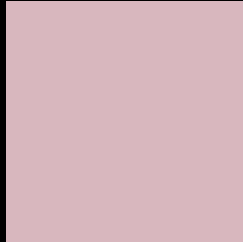
Large Text (above 18pt) WCAG AA × Fail

Any Text WCAG AA × Fail

Large Text (above 18pt) WCAG AAA × Fail

Any Text WCAG AAA × Fail

Black Background



This preview shows how the XYZ color 54.5467, 52.1836, 55.9127 looks on a black background.

Color Contrast Check

Large Text (above 18pt) WCAG AA ✓ Pass

Any Text WCAG AA ✓ Pass

Large Text (above 18pt) WCAG AAA ✓ Pass

Any Text WCAG AAA ✓ Pass

If you want to check with other color combinations, try the [Color Contrast Checker](#).

XYZ 54.5467, 52.1836, 55.9127

Background



This preview shows how black text looks on a background with the XYZ color 54.5467, 52.1836, 55.9127.



This preview shows how white text looks on a background with the XYZ color 54.5467, 52.1836,

55.9127.

Color Blindness Simulation

Color vision deficiency is a very complex topic, and I could not describe the different causes any better than Wikipedia does, so if you want to learn more, you should check out their [article about color blindness](#).

Dichromacy



Original Color

54.5467, 52.1836, 55.9127

Protanopia

50.3992, 52.1913, 58.4565

Deuteranopia

53.2216, 52.1173, 55.9698



Tritanopia

55.3070, 52.1931, 59.3838

Trichromacy



Original Color

54.5467, 52.1836, 55.9127

Protanomaly

51.7531, 51.9475, 57.7513

Deuteranomaly

53.5861, 51.9957, 55.9271

Tritanomaly

55.0808, 52.1027, 58.1927

Monochromacy



Original Color

54.5467, 52.1836, 55.9127

Achromatopsia

51.2775, 53.9479, 58.7493

Achromatomaly

52.3962, 53.2337, 57.9656

CSS Examples

Text

The CSS property to change the color of the text to XYZ 54.5467, 52.1836, 55.9127 is called "color". The color property can be set on classes, ids or directly on the HTML element.

This example shows how text in the color rgb(216, 183, 190) looks like.

```
.text, #text, p{  
    color:rgb(216, 183, 190)  
}
```

If you want to add a text shadow in that color use the text-shadow property, you can generate a text shadow directly with our [CSS Text Shadow Generator](#).

Here you see how black text with a 4 pixel rgb(216, 183, 190) colored shadow looks like.

```
.shadow{ text-shadow: 4px 4px 2px rgb(216, 183, 190) }
```

Border

The CSS property to change the border of an element to XYZ 54.5467, 52.1836, 55.9127 is called "border". The border property can be set on classes, ids or directly on the HTML element.

This example shows the color as border, it can be applied via the CSS property "border" or "border-color".

```
.border, #border, table{ border:4px solid rgb(216, 183, 190) }
```


If only the border color should be changed use the property border-color.

```
.border{ border-color:rgb(216, 183, 190) }
```

If you want to add a box shadow in that color use:

Here you see how a box with a 4 pixel rgb(216, 183, 190) colored shadow looks like.

```
.boxshadow{ -moz-box-shadow:4px 4px 4px  
4px rgb(216, 183, 190); -webkit-box-  
shadow:4px 4px 4px 4px rgb(216, 183, 190);  
box-shadow:4px 4px 4px 4px rgb(216, 183,  
190) }
```

Background

The CSS property to change the background color of an element to XYZ 54.5467, 52.1836, 55.9127 is called "background". The background property can be set on classes, ids or directly on the HTML element.

```
.background, #background, body{  
background: rgb(216, 183, 190) }
```

If only the background color should be changed can be used:

```
.background{ background-color: rgb(216,  
183, 190) }
```

This example shows the color as background, it is applied via the CSS property "background".

To optimize and compress your CSS code, you can use our [online CSS compressor and optimizer](#) based on csstidy. If you want to create a linear or radial gradient as background or border, check our [CSS Gradient Generator](#).

Hey! You found this booklet interesting? Support Converting Colors with the new Membership Option!

The pro membership hides all ads, plus gives you double the colors in the color bucket, and more awesome pro features!

[Learn more, Memberships starting at \\$2.50/m!](#)

**Follow me
on Twitter!**

@ConvertingColor