

Converting Colors

XYZ(54.6059, 54.4437, 56.4044)

Have a look what the booklet for
XYZ(54.6059, 54.4437, 56.4044)
contains.

XYZ(54.5717, 54.3935, 56.3380)	3
<i>Conversions</i>	4
<i>Details</i>	6
<i>Harmonies</i>	12
<i>Previews</i>	24
<i>Color Blindness Simulation</i>	28
<i>CSS Examples</i>	31

Color

**XYZ(54.5717, 54.3935,
56.3380)**

Conversions

Conversions Part 1

Format	Color
Hex	D3BEBE
RGB	211, 190, 190
RGB Percent	83%, 75%, 75%
CMY	0.1725, 0.2549, 0.2549
CMYK	0.00, 0.10, 0.10, 0.17
HSL	0°, 19%, 79%
HSV	0°, 10%, 83%
XYZ	54.5717, 54.3935, 56.3380
YIQ	196.2790, 12.5160, 4.4520

Conversions

Conversions Part 2

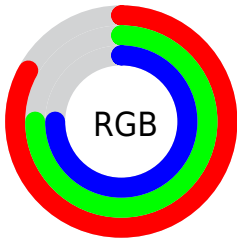
Format	Color
R _Y B	211, 190, 190
Decimal	13876926
CIE Lab	78.69, 7.42, 2.70
CIE LCh	79, 7.898, 19.970
Yxy	54.3935, 0.3301, 0.3291
Android (android.graphics.Color)	4292067006 (0xFFD3BEBE)
YUV	196.2790, -3.0955, 12.9103
Hunter-Lab	73.7519, 3.0126, 6.3356

Details

The XYZ color **54.5717, 54.3935, 56.3380** is a light color, and the websafe version is hex **CCCCCC**. A complement of this color would be **56.2872, 62.2377, 70.6751**, and the grayscale version is **52.6508, 55.3927, 60.3227**.

A 20% lighter version of the original color is **90.8303, 93.8254, 100.5116**, and **27.1713, 26.7654, 27.4011** is the 20% darker color. If you saturate the color by 10%, you get **48.1874, 45.0518, 43.6437**, and if you desaturate by 10%, it is **61.9543, 65.1963, 71.0136**.

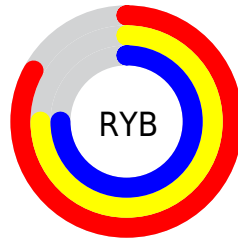
Distribution



Red (83%)

Green (75%)

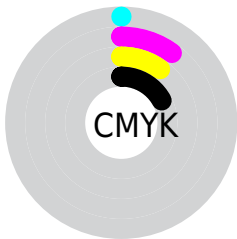
Blue (75%)



Red (83%)

Yellow (75%)

Blue (75%)

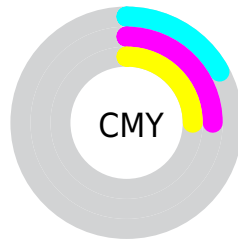


Cyan (0%)

Magenta (10%)

Yellow (10%)

Black (17%)



Cyan (17%)

Magenta (25%)

Yellow (25%)

Brightness & Saturation Gradients


These gradients show how the XYZ color 54.5717, 54.3935, 56.3380 changes by changing the brightness by 10 percent. The first figure shows a shift by +10% for each color and the second figure -10%.

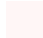
Similar to the brightness gradients but the following saturation gradients show a change of the XYZ color 54.5717, 54.3935, 56.3380 by changing the saturation by 10% instead.


 54.5717, 54.3935,
56.3380

 54.5717, 54.3935,
56.3380


394.4492,
403.6088, 428.3881

 39.2914, 38.9163,
40.0682


 96.0651, 96.6518,
100.9893

 27.1682, 26.6947,
27.2775


123.0090,
124.2017, 130.2079

 17.8369, 17.3440,
17.5475


154.5714,
156.5446, 164.5798

 10.9319, 10.4801,
10.4595

191.1177,
194.0650, 204.5235

 6.0880, 5.7184,
5.5951

233.0133,
237.1472, 250.4577

 2.9398, 2.6746,
2.5357

280.6235,

 1.1220, 0.9643,

286.1757, 302.8008

0.8590

334.3137,
341.5347, 361.9715

■ 0.0434, 0.0000,
0.0000

■ 0.0000, 0.0000,
0.0000

■ 54.5717, 54.3935,
56.3380

■ 54.5717, 54.3935,
56.3380

■ 48.1874, 45.0518,
43.6437

■ 61.9543, 65.1963,
71.0136

■ 42.7543, 37.1018,
32.8425

■ 70.3708, 77.5114,
87.7464

■ 38.2283, 30.4790,
23.8449

■ 79.8603, 91.3967,
106.6130

■ 34.5599, 25.1111,
16.5526

■ 80.6742, 92.5890,
108.2272

■ 31.6952, 20.9191,
10.8580

■ 29.5739, 17.8148,
6.6415

■ 28.1273, 15.6978,
3.7663

■ 27.2739, 14.4489,
2.0707

■ 26.8663, 13.8522,
1.2606

Harmonies

Analogous

The Analogous color harmony consists of three colors that are next to each other on the color wheel.



54.7114, 54.3935, 60.7348



54.5717, 54.3935, 56.3380



53.6538, 54.3935, 52.8847

Triad

The Triadic color harmony groups three colors that are evenly spaced from another and form a triangle on the color wheel.



54.5717, 54.3935, 56.3380



49.4352, 54.3935, 53.8673



51.1785, 54.3935, 68.0986

Complementary

The Complementary color scheme is a pair of colors which are on the opposite of each other on the color wheel.



54.5717, 54.3935, 56.3380



56.2872, 62.2377, 70.6751

Split Complementary

Split-complementary colors differ from the complementary color scheme. The scheme consists of three colors, the original color and two neighbors of the complement color.



49.7930, 54.3935, 66.0534



54.5717, 54.3935, 56.3380



48.8000, 54.3935, 57.7409

Square

The Square scheme is like the rectangle color scheme, but the four colors are evenly spaced on the color wheel.



54.5717, 54.3935, 56.3380



50.6812, 54.3935, 51.5087



48.9297, 54.3935, 62.2095



52.7312, 54.3935, 67.6764

Rectangle

The Rectangle color scheme consists of four colors that form a rectangle on the color wheel.



54.5717, 54.3935, 56.3380



52.7341, 54.3935, 51.5115



48.9297, 54.3935, 62.2095



50.6783, 54.3935, 67.6731

Sweetspot

The Sweet Spot groups the original color and five complimentary colors.



54.5732, 54.3959, 56.3392



91.4509, 94.7336, 101.7446



57.0360, 55.3798, 69.3119



19.3736, 19.9833, 21.3786



0.0000, 0.0000, 0.0000



20.3446, 21.4041, 23.3091

Same Dimension

The Same Dimension uses a secret algorithm to generate beautiful new colors.



54.5732, 54.3959, 56.3392



81.5136, 80.1930, 81.9883



56.9292, 59.1079, 57.1245



11.8089, 11.8086, 12.2689



16.2127, 8.3584, 0.7588



0.9066, 0.4675, 0.0424

Inverse Universe

The Inverse Universe completely reimagines the original color for something new.



56.2872, 62.2377, 70.6751



84.6729, 94.6479, 108.4139



53.7641, 57.1916, 69.8341



12.1582, 13.4068, 15.1906



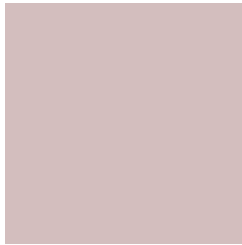
21.1486, 30.9438, 42.0506



1.1826, 1.7303, 2.3512

Previews

White Background



This preview shows how the XYZ color 54.5717, 54.3935, 56.3380 looks on a white background.

Color Contrast Check

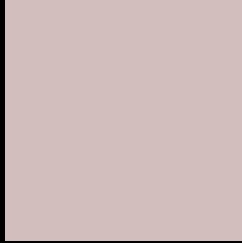
Large Text (above 18pt) WCAG AA × Fail

Any Text WCAG AA × Fail

Large Text (above 18pt) WCAG AAA × Fail

Any Text WCAG AAA × Fail

Black Background



This preview shows how the XYZ color 54.5717, 54.3935, 56.3380 looks on a black background.

Color Contrast Check

Large Text (above 18pt) WCAG AA ✓ Pass

Any Text WCAG AA ✓ Pass

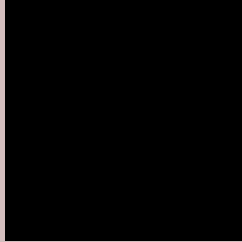
Large Text (above 18pt) WCAG AAA ✓ Pass

Any Text WCAG AAA ✓ Pass

If you want to check with other color combinations, try the [Color Contrast Checker](#).

XYZ 54.5717, 54.3935, 56.3380

Background



This preview shows how black text looks on a background with the XYZ color 54.5717, 54.3935, 56.3380.



This preview shows how white text looks on a background with the XYZ color 54.5717, 54.3935,

Color Blindness Simulation

Color vision deficiency is a very complex topic, and I could not describe the different causes any better than Wikipedia does, so if you want to learn more, you should check out their [article about color blindness](#).

Dichromacy



Original Color

54.5717, 54.3935, 56.3380

Protanopia

52.3594, 54.5315, 57.6352

Deuteranopia

55.3018, 54.1312, 56.2488



Tritanopia

56.2033, 54.4244, 64.0426

Trichromacy



Original Color

54.5717, 54.3935, 56.3380

Protanomaly

53.1025, 54.5980, 57.0299

Deuteranomaly

55.2234, 54.4090, 56.3066

Tritanomaly

55.5420, 54.4695, 61.0124

Monochromacy



Original Color

54.5717, 54.3935, 56.3380

Achromatopsia

52.4687, 55.2011, 60.1140

Achromatomaly

53.1168, 54.8961, 58.8354

CSS Examples

Text

The CSS property to change the color of the text to XYZ 54.5717, 54.3935, 56.3380 is called "color". The color property can be set on classes, ids or directly on the HTML element.

This example shows how text in the color rgb(211, 190, 190) looks like.

```
.text, #text, p{  
    color:rgb(211, 190, 190)  
}
```

If you want to add a text shadow in that color use the text-shadow property, you can generate a text shadow directly with our [CSS Text Shadow Generator](#).

Here you see how black text with a 4 pixel rgb(211, 190, 190) colored shadow looks like.

```
.shadow{ text-shadow: 4px 4px 2px rgb(211, 190, 190) }
```

Border

The CSS property to change the border of an element to XYZ 54.5717, 54.3935, 56.3380 is called "border". The border property can be set on classes, ids or directly on the HTML element.

This example shows the color as border, it can be applied via the CSS property "border" or "border-color".

```
.border, #border, table{ border:4px solid rgb(211, 190, 190) }
```


If only the border color should be changed use the property `border-color`.

```
.border{ border-color:rgb(211, 190, 190) }
```

If you want to add a box shadow in that color use:

Here you see how a box with a 4 pixel `rgb(211, 190, 190)` colored shadow looks like.

```
.boxshadow{ -moz-box-shadow:4px 4px 4px  
4px rgb(211, 190, 190); -webkit-box-  
shadow:4px 4px 4px 4px rgb(211, 190, 190);  
box-shadow:4px 4px 4px 4px rgb(211, 190,  
190) }
```

Background

The CSS property to change the background color of an element to XYZ 54.5717, 54.3935, 56.3380 is called "background". The background property can be set on classes, ids or directly on the HTML element.

```
.background, #background, body{  
background: rgb(211, 190, 190) }
```

If only the background color should be changed can be used:

```
.background{ background-color: rgb(211,  
190, 190) }
```

This example shows the color as background, it is applied via the CSS property "background".

To optimize and compress your CSS code, you can use our [online CSS compressor and optimizer](#) based on csstidy. If you want to create a linear or radial gradient as background or border, check our [CSS Gradient Generator](#).

Hey! You found this booklet interesting? Support Converting Colors with the new Membership Option!

The pro membership hides all ads, plus gives you double the colors in the color bucket, and more awesome pro features!

[Learn more, Memberships starting at \\$2.50/m!](#)

**Follow me
on Twitter!**

@ConvertingColor