

Converting Colors

XYZ(54.6790, 52.9740, 60.1463)

Have a look what the booklet for
XYZ(54.6790, 52.9740, 60.1463)
contains.

XYZ(54.7883, 53.1461, 60.1939)	3
<i>Conversions</i>	4
<i>Details</i>	6
<i>Harmonies</i>	12
<i>Previews</i>	24
<i>Color Blindness Simulation</i>	28
<i>CSS Examples</i>	31

Color

**XYZ(54.7883, 53.1461,
60.1939)**

Conversions

Conversions Part 1

Format	Color
Hex	D4BAC5
RGB	212, 186, 197
RGB Percent	83%, 73%, 77%
CMY	0.1686, 0.2706, 0.2274
CMYK	0.00, 0.12, 0.07, 0.17
HSL	335°, 23%, 78%
HSV	335°, 12%, 83%
XYZ	54.7883, 53.1461, 60.1939
YIQ	195.0280, 11.9650, 8.9330

Conversions

Conversions Part 2

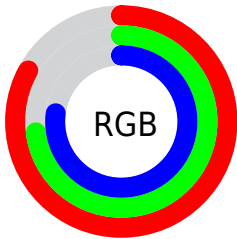
Format	Color
R _Y B	212, 186, 197
Decimal	13941445
CIE Lab	77.96, 11.12, -2.14
CIE LCh	78, 11.321, 349.089
Yxy	53.1461, 0.3259, 0.3161
Android (android.graphics.Color)	4292131525 (0xFFD4BAC5)
YUV	195.0280, 0.9722, 14.8844
Hunter-Lab	72.9014, 6.5725, 2.0758

Details

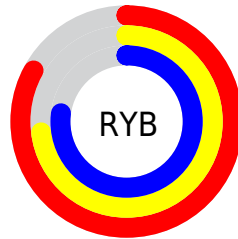
The XYZ color **54.7883, 53.1461, 60.1939** is a light color, and the websafe version is hex **CCCCCC**. A complement of this color would be **54.3378, 61.7444, 64.3152**, and the grayscale version is **51.8791, 54.5809, 59.4386**.

A 20% lighter version of the original color is **90.8815, 91.9200, 106.7183**, and **27.2501, 25.9263, 29.5546** is the 20% darker color. If you saturate the color by 10%, you get **49.3042, 44.3302, 51.7290**, and if you desaturate by 10%, it is **61.0518, 63.3374, 69.4810**.

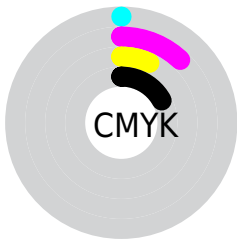
Distribution



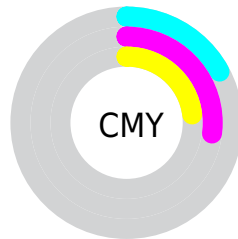
- Red (83%)
- Green (73%)
- Blue (77%)



- Red (83%)
- Yellow (73%)
- Blue (77%)



- Cyan (0%)
- Magenta (12%)
- Yellow (7%)
- Black (17%)





- Cyan (17%)
- Magenta (27%)
- Yellow (23%)

Brightness & Saturation Gradients


These gradients show how the XYZ color 54.7883, 53.1461, 60.1939 changes by changing the brightness by 10 percent. The first figure shows a shift by +10% for each color and the second figure -10%.


Similar to the brightness gradients but the following saturation gradients show a change of the XYZ color 54.7883, 53.1461, 60.1939 by changing the saturation by 10% instead.


 54.7883, 53.1461,
60.1939

 54.7883, 53.1461,
60.1939

395.2584,
398.8454, 443.1366

 39.4654, 37.9194,
43.1486


 96.3808, 94.8193,
106.6570

 27.3043, 25.9201,
29.6695


123.3812,
122.0346, 136.9119

 17.9397, 16.7639,
19.3379


155.0048,
154.0150, 172.4072

 11.0061, 10.0663,
11.7354

191.6170,
191.1447, 213.5612

 6.1383, 5.4429,
6.4434

233.5831,
233.8082, 260.7926

 2.9708, 2.5094,
3.0434

281.2684,

 1.1383, 0.8814,

282.3899, 314.5200

1.1169

335.0384,
337.2742, 375.1618

■ 0.0568, 0.0000,
0.0000

■ 0.0000, 0.0000,
0.0000

■ 54.7883, 53.1461,
60.1939

■ 54.7883, 53.1461,
60.1939

■ 49.3042, 44.3302,
51.7290

■ 61.0518, 63.3374,
69.4810

■ 44.5632, 36.8234,
44.0592

■ 68.1201, 74.9526,
79.6098

■ 40.5328, 30.5646,
37.1605

■ 76.0228, 88.0466,
90.6031

■ 37.1762, 25.4847,
31.0062

■ 79.5356, 92.1668,
100.7315

■ 34.4531, 21.5082,
25.5681

■ 80.9616, 92.7372,
108.2407

■ 32.3188, 18.5504,
20.8157

■ 30.7220, 16.5142,
16.7154

■ 29.6019, 15.2834,
13.2296

■ 28.9833, 14.7299,
10.9162

Harmonies

Analogous

The Analogous color harmony consists of three colors that are next to each other on the color wheel.



53.7830, 53.1461, 66.1809



54.7883, 53.1461, 60.1939



54.6234, 53.1461, 53.9897

Triad

The Triadic color harmony groups three colors that are evenly spaced from another and form a triangle on the color wheel.



54.7883, 53.1461, 60.1939



49.1411, 53.1461, 47.1432



47.7902, 53.1461, 67.5277

Complementary

The Complementary color scheme is a pair of colors which are on the opposite of each other on the color wheel.



54.7883, 53.1461, 60.1939



54.3378, 61.7444, 64.3152

Split Complementary

Split-complementary colors differ from the complementary color scheme. The scheme consists of three colors, the original color and two neighbors of the complement color.



46.6156, 53.1461, 61.9257



54.7883, 53.1461, 60.1939



47.3797, 53.1461, 50.2804

Square

The Square scheme is like the rectangle color scheme, but the four colors are evenly spaced on the color wheel.



54.7883, 53.1461, 60.1939



51.3198, 53.1461, 46.7538



46.4676, 53.1461, 55.6010



49.7162, 53.1461, 70.6151

Rectangle

The Rectangle color scheme consists of four colors that form a rectangle on the color wheel.



54.7883, 53.1461, 60.1939



53.8734, 53.1461, 50.5501



46.4676, 53.1461, 55.6010



47.2968, 53.1461, 65.8581

Sweetspot

The Sweet Spot groups the original color and five complimentary colors.



54.7898, 53.1484, 60.1950



90.9487, 93.2906, 102.9296



53.4603, 52.2544, 69.5564



19.3064, 19.7064, 21.7958



0.0000, 0.0000, 0.0000



20.3446, 21.4041, 23.3091

Same Dimension

The Same Dimension uses a secret algorithm to generate beautiful new colors.



54.7898, 53.1484, 60.1950



80.6864, 76.6361, 87.5777



53.9424, 53.3972, 53.9209



12.6390, 12.5071, 14.0394



17.9404, 9.1125, 6.9904



1.1230, 0.5660, 0.6369

Inverse Universe

The Inverse Universe completely reimagines the original color for something new.



54.7898, 53.1484, 60.1950



80.6864, 76.6361, 87.5777



55.2475, 61.4188, 71.2311



12.6390, 12.5071, 14.0394



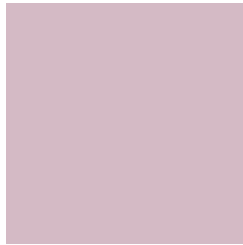
17.9404, 9.1125, 6.9904



1.1230, 0.5660, 0.6369

Previews

White Background



This preview shows how the XYZ color 54.7883, 53.1461, 60.1939 looks on a white background.

Color Contrast Check

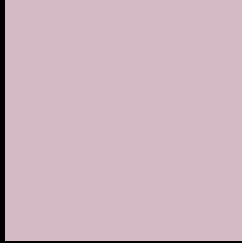
Large Text (above 18pt) WCAG AA × Fail

Any Text WCAG AA × Fail

Large Text (above 18pt) WCAG AAA × Fail

Any Text WCAG AAA × Fail

Black Background



This preview shows how the XYZ color 54.7883, 53.1461, 60.1939 looks on a black background.

Color Contrast Check

Large Text (above 18pt) WCAG AA ✓ Pass

Any Text WCAG AA ✓ Pass

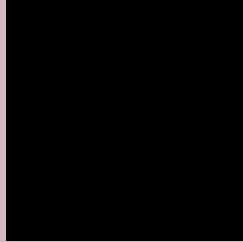
Large Text (above 18pt) WCAG AAA ✓ Pass

Any Text WCAG AAA ✓ Pass

If you want to check with other color combinations, try the [Color Contrast Checker](#).

XYZ 54.7883, 53.1461, 60.1939

Background



This preview shows how black text looks on a background with the XYZ color 54.7883, 53.1461, 60.1939.



This preview shows how white text looks on a background with the XYZ color 54.7883, 53.1461,

Color Blindness Simulation

Color vision deficiency is a very complex topic, and I could not describe the different causes any better than Wikipedia does, so if you want to learn more, you should check out their [article about color blindness](#).

Dichromacy



Original Color

54.7883, 53.1461, 60.1939

Protanopia

51.5231, 53.3387, 62.2234

Deuteranopia

54.4267, 53.2735, 60.2375



Tritanopia

55.1356, 53.2850, 62.0227

Trichromacy



Original Color

54.7883, 53.1461, 60.1939

Protanomaly

52.8097, 53.3679, 61.5505

Deuteranomaly

54.7123, 53.4207, 60.2509

Tritanomaly

55.0191, 53.2384, 61.4090

Monochromacy



Original Color

54.7883, 53.1461, 60.1939

Achromatopsia

51.8711, 54.5724, 59.4294

Achromatomaly

52.9008, 54.1023, 59.8792

CSS Examples

Text

The CSS property to change the color of the text to XYZ 54.7883, 53.1461, 60.1939 is called "color". The color property can be set on classes, ids or directly on the HTML element.

This example shows how text in the color rgb(212, 186, 197) looks like.

```
.text, #text, p{  
    color:rgb(212, 186, 197)  
}
```

If you want to add a text shadow in that color use the text-shadow property, you can generate a text shadow directly with our [CSS Text Shadow Generator](#).

Here you see how black text with a 4 pixel rgb(212, 186, 197) colored shadow looks like.

```
.shadow{ text-shadow: 4px 4px 2px rgb(212, 186, 197) }
```

Border

The CSS property to change the border of an element to XYZ 54.7883, 53.1461, 60.1939 is called "border". The border property can be set on classes, ids or directly on the HTML element.

This example shows the color as border, it can be applied via the CSS property "border" or "border-color".

```
.border, #border, table{ border:4px solid rgb(212, 186, 197) }
```


If only the border color should be changed use the property `border-color`.

```
.border{ border-color:rgb(212, 186, 197) }
```

If you want to add a box shadow in that color use:

Here you see how a box with a 4 pixel `rgb(212, 186, 197)` colored shadow looks like.

```
.boxshadow{ -moz-box-shadow:4px 4px 4px  
4px rgb(212, 186, 197); -webkit-box-  
shadow:4px 4px 4px 4px rgb(212, 186, 197);  
box-shadow:4px 4px 4px 4px rgb(212, 186,  
197) }
```

Background

The CSS property to change the background color of an element to XYZ 54.7883, 53.1461, 60.1939 is called "background". The background property can be set on classes, ids or directly on the HTML element.

```
.background, #background, body{  
background: rgb(212, 186, 197) }
```

If only the background color should be changed can be used:

```
.background{ background-color: rgb(212,  
186, 197) }
```

This example shows the color as background, it is applied via the CSS property "background".

To optimize and compress your CSS code, you can use our [online CSS compressor and optimizer](#) based on csstidy. If you want to create a linear or radial gradient as background or border, check our [CSS Gradient Generator](#).

Hey! You found this booklet interesting? Support Converting Colors with the new Membership Option!

The pro membership hides all ads, plus gives you double the colors in the color bucket, and more awesome pro features!

[Learn more, Memberships starting at \\$2.50/m!](#)

**Follow me
on Twitter!**

@ConvertingColor