

Converting Colors

XYZ(54.7182, 54.6632, 56.6951)

Have a look what the booklet for
XYZ(54.7182, 54.6632, 56.6951)
contains.

XYZ(54.8987, 54.8721, 56.9881)	3
<i>Conversions</i>	4
<i>Details</i>	6
<i>Harmonies</i>	12
<i>Previews</i>	24
<i>Color Blindness Simulation</i>	28
<i>CSS Examples</i>	31

Color

**XYZ(54.8987, 54.8721,
56.9881)**

Conversions

Conversions Part 1

Format	Color
Hex	D3BFBF
RGB	211, 191, 191
RGB Percent	83%, 75%, 75%
CMY	0.1725, 0.2510, 0.2510
CMYK	0.00, 0.09, 0.09, 0.17
HSL	0°, 19%, 79%
HSV	0°, 9%, 83%
XYZ	54.8987, 54.8721, 56.9881
YIQ	196.9800, 11.9200, 4.2400

Conversions

Conversions Part 2

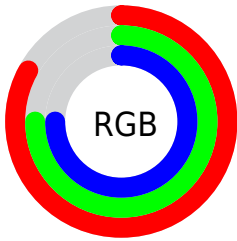
Format	Color
R_{YB}	211, 191, 191
Decimal	13877183
CIE Lab	78.97, 7.06, 2.56
CIE LCh	79, 7.507, 19.934
Yxy	54.8721, 0.3292, 0.3291
Android (android.graphics.Color)	4292067263 (0xFFD3BFBF)
YUV	196.9800, -2.9481, 12.2955
Hunter-Lab	74.0757, 2.6567, 6.2399

Details

The XYZ color **54.8987, 54.8721, 56.9881** is a light color, and the websafe version is hex **CCCCCC**. A complement of this color would be **56.5376, 62.3667, 70.6866**, and the grayscale version is **53.0723, 55.8362, 60.8057**.

A 20% lighter version of the original color is **91.2893, 94.4969, 101.4240**, and **27.3862, 27.0799, 27.8283** is the 20% darker color. If you saturate the color by 10%, you get **48.4683, 45.4630, 44.2019**, and if you desaturate by 10%, it is **62.3294, 65.7452, 71.7594**.

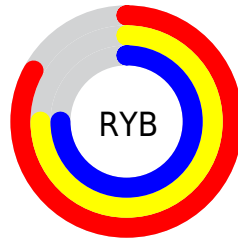
Distribution



Red (83%)

Green (75%)

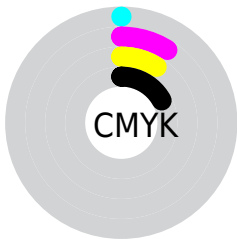
Blue (75%)



Red (83%)

Yellow (75%)

Blue (75%)

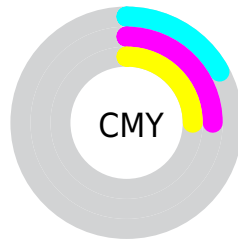


Cyan (0%)

Magenta (9%)

Yellow (9%)

Black (17%)



Cyan (17%)


Magenta (25%)


Yellow (25%)

Brightness & Saturation Gradients


These gradients show how the XYZ color 54.8987, 54.8721, 56.9881 changes by changing the brightness by 10 percent. The first figure shows a shift by +10% for each color and the second figure -10%.

Similar to the brightness gradients but the following saturation gradients show a change of the XYZ color 54.8987, 54.8721, 56.9881 by changing the saturation by 10% instead.

 54.8987, 54.8721,
56.9881

 54.8987, 54.8721,
56.9881


395.6705,
405.4269, 430.8972

 39.5541, 39.2993,
40.5864


 96.5417, 97.3535,
101.9480

 27.3737, 26.9927,
27.6788


123.5709,
125.0310, 131.3432

 17.9922, 17.5677,
17.8467

155.2256,
157.5121, 165.9068

 11.0440, 10.6401,
10.6717

191.8713,
195.1814, 206.0571

 6.1640, 5.8254,
5.7352

233.8733,
238.4231, 252.2127

 2.9866, 2.7392,
2.6185

281.5969,

 1.1467, 0.9971,

287.6216, 304.7923

0.9020

335.4075,
343.1614, 364.2143

■ 0.0637, 0.0000,
0.0000

■ 0.0000, 0.0000,
0.0000

■ 54.8987, 54.8721,
56.9881

■ 54.8987, 54.8721,
56.9881

■ 48.4683, 45.4630,
44.2019

■ 62.3294, 65.7452,
71.7594

■ 42.9911, 37.4484,
33.3130

■ 70.7957, 78.1332,
88.5917

■ 38.4232, 30.7643,
24.2321

■ 80.3368, 92.0939,
107.5610

■ 34.7154, 25.3387,
16.8613

■ 80.6742, 92.5890,
108.2272

■ 31.8139, 21.0929,
11.0936

■ 29.6587, 17.9391,
6.8099

■ 28.1818, 15.7777,
3.8746

■ 27.3024, 14.4906,
2.1272

■ 26.8826, 13.8762,
1.2931

Harmonies

Analogous

The Analogous color harmony consists of three colors that are next to each other on the color wheel.



55.0310, 54.8721, 61.1944



54.8987, 54.8721, 56.9881



54.0232, 54.8721, 53.6751

Triad

The Triadic color harmony groups three colors that are evenly spaced from another and form a triangle on the color wheel.



54.8987, 54.8721, 56.9881



49.9889, 54.8721, 54.6111



51.6543, 54.8721, 68.2089

Complementary

The Complementary color scheme is a pair of colors which are on the opposite of each other on the color wheel.



54.8987, 54.8721, 56.9881



56.5376, 62.3667, 70.6866

Split Complementary

Split-complementary colors differ from the complementary color scheme. The scheme consists of three colors, the original color and two neighbors of the complement color.



50.3289, 54.8721, 66.2591



54.8987, 54.8721, 56.9881



49.3796, 54.8721, 58.3214

Square

The Square scheme is like the rectangle color scheme, but the four colors are evenly spaced on the color wheel.



54.8987, 54.8721, 56.9881



51.1821, 54.8721, 52.3488



49.5029, 54.8721, 62.5923



53.1387, 54.8721, 67.8100

Rectangle

The Rectangle color scheme consists of four colors that form a rectangle on the color wheel.



54.8987, 54.8721, 56.9881



53.1451, 54.8721, 52.3547



49.5029, 54.8721, 62.5923



51.1759, 54.8721, 67.8029

Sweetspot

The Sweet Spot groups the original color and five complimentary colors.



54.9002, 54.8745, 56.9893



91.4509, 94.7337, 101.7446



57.2532, 55.8144, 69.3842



19.3736, 19.9833, 21.3786



0.0000, 0.0000, 0.0000



20.3446, 21.4041, 23.3091

Same Dimension

The Same Dimension uses a secret algorithm to generate beautiful new colors.



54.9002, 54.8745, 56.9893



82.5551, 81.7171, 84.0587



57.1552, 59.3844, 57.7409



11.8090, 11.8086, 12.2689



16.2128, 8.3585, 0.7588



0.9066, 0.4675, 0.0425

Inverse Universe

The Inverse Universe completely reimagines the original color for something new.



56.5376, 62.3667, 70.6866



85.4710, 95.0593, 108.4512



54.1310, 57.5535, 69.8844



12.1582, 13.4067, 15.1906



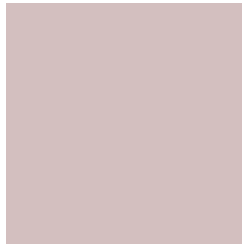
21.1479, 30.9424, 42.0504



1.1825, 1.7302, 2.3512

Previews

White Background



This preview shows how the XYZ color 54.8987, 54.8721, 56.9881 looks on a white background.

Color Contrast Check

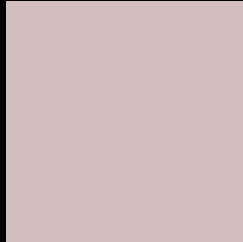
Large Text (above 18pt) WCAG AA × Fail

Any Text WCAG AA × Fail

Large Text (above 18pt) WCAG AAA × Fail

Any Text WCAG AAA × Fail

Black Background



This preview shows how the XYZ color 54.8987, 54.8721, 56.9881 looks on a black background.

Color Contrast Check

Large Text (above 18pt) WCAG AA ✓ Pass

Any Text WCAG AA ✓ Pass

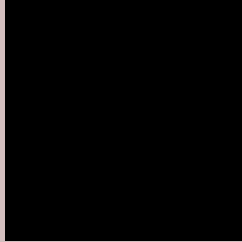
Large Text (above 18pt) WCAG AAA ✓ Pass

Any Text WCAG AAA ✓ Pass

If you want to check with other color combinations, try the [Color Contrast Checker](#).

XYZ 54.8987, 54.8721, 56.9881

Background



This preview shows how black text looks on a background with the XYZ color 54.8987, 54.8721, 56.9881.



This preview shows how white text looks on a background with the XYZ color 54.8987, 54.8721,

Color Blindness Simulation

Color vision deficiency is a very complex topic, and I could not describe the different causes any better than Wikipedia does, so if you want to learn more, you should check out their [article about color blindness](#).

Dichromacy



Original Color

54.8987, 54.8721, 56.9881

Protanopia

52.9602, 55.1598, 58.3077

Deuteranopia

55.9205, 54.7557, 56.9118



Tritanopia

56.5373, 54.9010, 64.7439

Trichromacy



Original Color

54.8987, 54.8721, 56.9881

Protanomaly

53.7081, 55.2267, 57.6983

Deuteranomaly

55.5490, 54.8846, 56.9563

Tritanomaly

55.8736, 54.9475, 61.6939

Monochromacy



Original Color

54.8987, 54.8721, 56.9881

Achromatopsia

53.0703, 55.8340, 60.8033

Achromatomaly

53.7226, 55.5269, 59.5160

CSS Examples

Text

The CSS property to change the color of the text to XYZ 54.8987, 54.8721, 56.9881 is called "color". The color property can be set on classes, ids or directly on the HTML element.

This example shows how text in the color rgb(211, 191, 191) looks like.

```
.text, #text, p{  
    color:rgb(211, 191, 191)  
}
```

If you want to add a text shadow in that color use the text-shadow property, you can generate a text shadow directly with our [CSS Text Shadow Generator](#).

Here you see how black text with a 4 pixel rgb(211, 191, 191) colored shadow looks like.

```
.shadow{ text-shadow: 4px 4px 2px rgb(211, 191, 191) }
```

Border

The CSS property to change the border of an element to XYZ 54.8987, 54.8721, 56.9881 is called "border". The border property can be set on classes, ids or directly on the HTML element.

This example shows the color as border, it can be applied via the CSS property "border" or "border-color".

```
.border, #border, table{ border:4px solid rgb(211, 191, 191) }
```


If only the border color should be changed use the property `border-color`.

```
.border{ border-color:rgb(211, 191, 191) }
```

If you want to add a box shadow in that color use:

Here you see how a box with a 4 pixel `rgb(211, 191, 191)` colored shadow looks like.

```
.boxshadow{ -moz-box-shadow:4px 4px 4px  
4px rgb(211, 191, 191); -webkit-box-  
shadow:4px 4px 4px 4px rgb(211, 191, 191);  
box-shadow:4px 4px 4px 4px rgb(211, 191,  
191) }
```

Background

The CSS property to change the background color of an element to XYZ 54.8987, 54.8721, 56.9881 is called "background". The background property can be set on classes, ids or directly on the HTML element.

```
.background, #background, body{  
background: rgb(211, 191, 191) }
```

If only the background color should be changed can be used:

```
.background{ background-color: rgb(211,  
191, 191) }
```

This example shows the color as background, it is applied via the CSS property "background".

To optimize and compress your CSS code, you can use our [online CSS compressor and optimizer](#) based on csstidy. If you want to create a linear or radial gradient as background or border, check our [CSS Gradient Generator](#).

Hey! You found this booklet interesting? Support Converting Colors with the new Membership Option!

The pro membership hides all ads, plus gives you double the colors in the color bucket, and more awesome pro features!

[Learn more, Memberships starting at \\$2.50/m!](#)

**Follow me
on Twitter!**

@ConvertingColor