

Converting Colors

XYZ(54.7331, 54.0065, 48.6138)

Have a look what the booklet for
XYZ(54.7331, 54.0065, 48.6138)
contains.

XYZ(54.7331, 54.0065, 48.6138)	3
<i>Conversions</i>	4
<i>Details</i>	6
<i>Harmonies</i>	12
<i>Previews</i>	24
<i>Color Blindness Simulation</i>	28
<i>CSS Examples</i>	31

Color

**XYZ(54.7331, 54.0065,
48.6138)**

Conversions

Conversions Part 1

Format	Color
Hex	DABCB0
RGB	218, 188, 176
RGB Percent	85%, 74%, 69%
CMY	0.1451, 0.2627, 0.3098
CMYK	0.00, 0.14, 0.19, 0.15
HSL	17°, 36%, 77%
HSV	17°, 19%, 85%
XYZ	54.7331, 54.0065, 48.6138
YIQ	195.6020, 21.7320, 2.6280

Conversions

Conversions Part 2

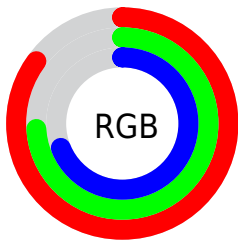
Format	Color
R_{YB}	218, 193, 176
Decimal	14335152
CIE _{Lab}	78.47, 8.80, 10.01
CIE _{LCh}	78, 13.330, 48.675
Yxy	54.0065, 0.3478, 0.3432
Android (android.graphics.Color)	4292525232 (0xFFDABC00)
YUV	195.6020, -9.6638, 19.6430
Hunter-Lab	73.4891, 4.3370, 12.2214

Details

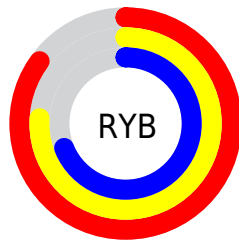
The XYZ color **54.7331, 54.0065, 48.6138** is a light color, and the websafe version is hex **FFCCCC**. A complement of this color would be **52.6301, 58.4330, 74.8347**, and the grayscale version is **52.2791, 55.0017, 59.8969**.

A 20% lighter version of the original color is **88.1562, 91.7876, 89.4144**, and **27.4063, 26.5697, 22.7528** is the 20% darker color. If you saturate the color by 10%, you get **49.5988, 46.9167, 37.1015**, and if you desaturate by 10%, it is **60.5756, 61.9574, 62.0723**.

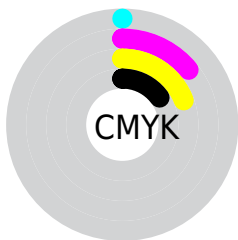
Distribution



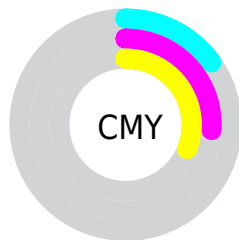
- Red (85%)
- Green (74%)
- Blue (69%)



- Red (85%)
- Yellow (76%)
- Blue (69%)



- Cyan (0%)
- Magenta (14%)
- Yellow (19%)
- Black (15%)



- Cyan (15%)
- Magenta (26%)
- Yellow (31%)

Brightness & Saturation Gradients

These gradients show how the XYZ color 54.7331, 54.0065, 48.6138 changes by changing the brightness by 10 percent. The first figure shows a shift by +10% for each color and the second figure -10%.

Similar to the brightness gradients but the following saturation gradients show a change of the XYZ color 54.7331, 54.0065, 48.6138 by changing the saturation by 10% instead.

■ 54.7331, 54.0065,
48.6138

■ 54.7331, 54.0065,
48.6138

395.0523,
402.1348, 397.7986

■ 39.4211, 38.6069,
33.9498

■ 96.3004, 96.0838,
89.4926

■ 27.2696, 26.4540,
22.5780

123.2864,
123.5302, 116.5445

■ 17.9135, 17.1636,
14.0798

154.8944,
155.7611, 148.5628

■ 10.9872, 10.3512,
8.0368

191.4898,
193.1607, 185.9660

■ 6.1255, 5.6324,
4.0304

233.4379,
236.1134, 229.1726

■ 2.9629, 2.6229,
1.6420

281.1041,

■ 1.1342, 0.9382,

285.0038, 278.6012

0.3206

334.8538,
340.2161, 334.6704

■ 0.0534, 0.0000,
0.0000

■ 0.0000, 0.0000,
0.0000

■ 54.7331, 54.0065,
48.6138

■ 54.7331, 54.0065,
48.6138

■ 49.5988, 46.9167,
37.1015

■ 60.5756, 61.9574,
62.0723

■ 45.1405, 40.6515,
27.4414

■ 67.1481, 70.7898,
77.5584

■ 41.3298, 35.1822,
19.5366

■ 74.4770, 80.5328,
95.1529

■ 38.1346, 30.4759,
13.2800

■ 81.2369, 90.6721,
107.8276

■ 35.5199, 26.4972,
8.5527

■ 82.7236, 93.6455,
108.3231

■ 33.4465, 23.2074,
5.2196

■ 31.8698, 20.5641,
3.1214

■ 30.7250, 18.5143,
2.0002

■ 30.6530, 18.3845,
1.9330

Harmonies

Analogous

The Analogous color harmony consists of three colors that are next to each other on the color wheel.



56.2573, 54.0065, 54.3009



54.7331, 54.0065, 48.6138



52.3280, 54.0065, 45.7524

Triad

The Triadic color harmony groups three colors that are evenly spaced from another and form a triangle on the color wheel.



54.7331, 54.0065, 48.6138



46.5452, 54.0065, 56.0138



52.9628, 54.0065, 73.5701

Complementary

The Complementary color scheme is a pair of colors which are on the opposite of each other on the color wheel.



54.7331, 54.0065, 48.6138



52.6301, 58.4330, 74.8347

Split Complementary

Split-complementary colors differ from the complementary color scheme. The scheme consists of three colors, the original color and two neighbors of the complement color.



50.3479, 54.0065, 74.1277



54.7331, 54.0065, 48.6138



46.7021, 54.0065, 63.5492

Square

The Square scheme is like the rectangle color scheme, but the four colors are evenly spaced on the color wheel.



54.7331, 54.0065, 48.6138



47.6379, 54.0065, 49.7757



48.0740, 54.0065, 70.3269



55.2114, 54.0065, 68.8626

Rectangle

The Rectangle color scheme consists of four colors that form a rectangle on the color wheel.



54.7331, 54.0065, 48.6138



50.5749, 54.0065, 45.6543



48.0740, 54.0065, 70.3269



52.0957, 54.0065, 74.2631

Sweetspot

The Sweet Spot groups the original color and five complimentary colors.



54.7346, 54.0089, 48.6149



89.2963, 92.2788, 95.3098



55.5920, 50.4178, 65.2582



18.9840, 19.5776, 20.0975



0.0000, 0.0000, 0.0000



20.3446, 21.4041, 23.3091

Same Dimension

The Same Dimension uses a secret algorithm to generate beautiful new colors.



54.7346, 54.0089, 48.6149



75.0665, 72.9071, 62.5497



59.5262, 63.5923, 50.2122



13.3576, 13.6546, 13.6572



18.4441, 11.1738, 1.1846



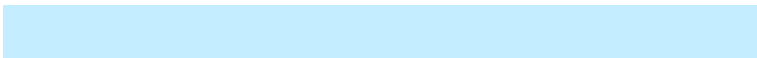
1.2677, 0.8694, 0.1010

Inverse Universe

The Inverse Universe completely reimagines the original color for something new.



52.6301, 58.4330, 74.8347



71.5496, 80.2897, 106.3341



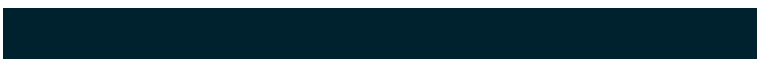
47.9299, 49.0325, 73.2680



13.1141, 14.1679, 16.6956



14.7690, 17.4075, 42.3200



1.0290, 1.2721, 2.7657

Previews

White Background



This preview shows how the XYZ color 54.7331, 54.0065, 48.6138 looks on a white background.

Color Contrast Check

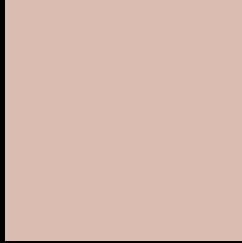
Large Text (above 18pt) WCAG AA × Fail

Any Text WCAG AA × Fail

Large Text (above 18pt) WCAG AAA × Fail

Any Text WCAG AAA × Fail

Black Background



This preview shows how the XYZ color 54.7331, 54.0065, 48.6138 looks on a black background.

Color Contrast Check

Large Text (above 18pt) WCAG AA ✓ Pass

Any Text WCAG AA ✓ Pass

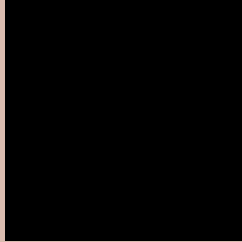
Large Text (above 18pt) WCAG AAA ✓ Pass

Any Text WCAG AAA ✓ Pass

If you want to check with other color combinations, try the [Color Contrast Checker](#).

XYZ 54.7331, 54.0065, 48.6138

Background



This preview shows how black text looks on a background with the XYZ color 54.7331, 54.0065, 48.6138.



This preview shows how white text looks on a background with the XYZ color 54.7331, 54.0065,

Color Blindness Simulation

Color vision deficiency is a very complex topic, and I could not describe the different causes any better than Wikipedia does, so if you want to learn more, you should check out their [article about color blindness](#).

Dichromacy



Original Color

54.7331, 54.0065, 48.6138

Protanopia

51.5159, 54.2558, 50.4051

Deuteranopia

55.1220, 53.8909, 48.5710



Tritanopia

57.4766, 54.1936, 61.4639

Trichromacy



Original Color

54.7331, 54.0065, 48.6138

Protanomaly

52.6176, 54.1790, 49.8038

Deuteranomaly

54.8202, 53.7353, 48.5569

Tritanomaly

56.4781, 54.0950, 56.7549

Monochromacy



Original Color

54.7331, 54.0065, 48.6138

Achromatopsia

52.4687, 55.2011, 60.1140

Achromatomaly

53.1571, 54.6514, 55.8912

CSS Examples

Text

The CSS property to change the color of the text to XYZ 54.7331, 54.0065, 48.6138 is called "color". The color property can be set on classes, ids or directly on the HTML element.

This example shows how text in the color `rgb(218, 188, 176)` looks like.

```
.text, #text, p{  
    color:rgb(218, 188, 176)  
}
```

If you want to add a text shadow in that color use the text-shadow property, you can generate a text shadow directly with our [CSS Text Shadow Generator](#).

Here you see how black text with a 4 pixel rgb(218, 188, 176) colored shadow looks like.

```
.shadow{ text-shadow: 4px 4px 2px rgb(218, 188, 176) }
```

Border

The CSS property to change the border of an element to XYZ 54.7331, 54.0065, 48.6138 is called "border". The border property can be set on classes, ids or directly on the HTML element.

This example shows the color as border, it can be applied via the CSS property "border" or "border-color".

```
.border, #border, table{ border:4px solid rgb(218, 188, 176) }
```


If only the border color should be changed use the property `border-color`.

```
.border{ border-color:rgb(218, 188, 176) }
```

If you want to add a box shadow in that color use:

Here you see how a box with a 4 pixel `rgb(218, 188, 176)` colored shadow looks like.

```
.boxshadow{ -moz-box-shadow:4px 4px 4px  
4px rgb(218, 188, 176); -webkit-box-  
shadow:4px 4px 4px 4px rgb(218, 188, 176);  
box-shadow:4px 4px 4px 4px rgb(218, 188,  
176) }
```

Background

The CSS property to change the background color of an element to XYZ 54.7331, 54.0065, 48.6138 is called "background". The background property can be set on classes, ids or directly on the HTML element.

```
.background, #background, body{  
background: rgb(218, 188, 176) }
```

If only the background color should be changed can be used:

```
.background{ background-color: rgb(218,  
188, 176) }
```

This example shows the color as background, it is applied via the CSS property "background".

To optimize and compress your CSS code, you can use our [online CSS compressor and optimizer](#) based on csstidy. If you want to create a linear or radial gradient as background or border, check our [CSS Gradient Generator](#).

Hey! You found this booklet interesting? Support Converting Colors with the new Membership Option!

The pro membership hides all ads, plus gives you double the colors in the color bucket, and more awesome pro features!

[Learn more, Memberships starting at \\$2.50/m!](#)

**Follow me
on Twitter!**

@ConvertingColor