

Converting Colors

XYZ(54.8273, 53.3549, 56.6977)

Have a look what the booklet for
XYZ(54.8273, 53.3549, 56.6977)
contains.

XYZ(54.6944, 53.1755, 56.6714)	3
<i>Conversions</i>	4
<i>Details</i>	6
<i>Harmonies</i>	12
<i>Previews</i>	24
<i>Color Blindness Simulation</i>	28
<i>CSS Examples</i>	31

Color

**XYZ(54.6944, 53.1755,
56.6714)**

Conversions

Conversions Part 1

Format	Color
Hex	D6BABF
RGB	214, 186, 191
RGB Percent	84%, 73%, 75%
CMY	0.1608, 0.2706, 0.2510
CMYK	0.00, 0.13, 0.11, 0.16
HSL	349°, 25%, 78%
HSV	349°, 13%, 84%
XYZ	54.6944, 53.1755, 56.6714
YIQ	194.9420, 15.0830, 7.4910

Conversions

Conversions Part 2

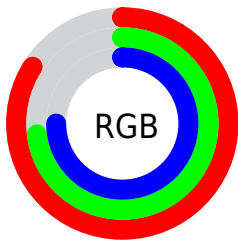
Format	Color
R _Y B	214, 186, 191
Decimal	14072511
CIE Lab	77.98, 10.80, 1.15
CIE LCh	78, 10.865, 6.094
Yxy	53.1755, 0.3324, 0.3232
Android (android.graphics.Color)	4292262591 (0xFFD6BABF)
YUV	194.9420, -1.9434, 16.7139
Hunter-Lab	72.9215, 6.2703, 4.9675

Details

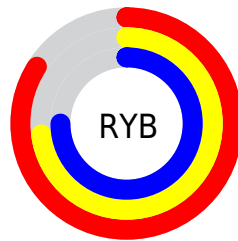
The XYZ color **54.6944, 53.1755, 56.6714** is a light color, and the websafe version is hex **CCCCCC**. A complement of this color would be **55.8069, 63.1370, 69.5699**, and the grayscale version is **51.8434, 54.5432, 59.3976**.

A 20% lighter version of the original color is **89.7806, 91.4797, 100.9211**, and **27.2730, 25.9810, 27.6221** is the 20% darker color. If you saturate the color by 10%, you get **48.6994, 44.0977, 45.6937**, and if you desaturate by 10%, it is **61.5999, 63.7013, 69.0997**.

Distribution



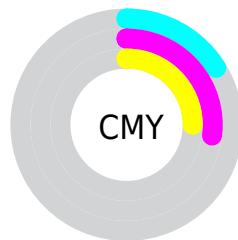
- Red (84%)
- Green (73%)
- Blue (75%)



- Red (84%)
- Yellow (73%)
- Blue (75%)



- Cyan (0%)
- Magenta (13%)
- Yellow (11%)
- Black (16%)



- Cyan (16%)
- Magenta (27%)
- Yellow (25%)

Brightness & Saturation Gradients

These gradients show how the XYZ color 54.6944, 53.1755, 56.6714 changes by changing the brightness by 10 percent. The first figure shows a shift by +10% for each color and the second figure -10%.

Similar to the brightness gradients but the following saturation gradients show a change of the XYZ color 54.6944, 53.1755, 56.6714 by changing the saturation by 10% instead.

■ 54.6944, 53.1755,
56.6714

■ 54.6944, 53.1755,
56.6714

394.9077,
398.9581, 429.6761

■ 39.3900, 37.9429,
40.3339

■ 96.2440, 94.8626,
101.4811

■ 27.2453, 25.9384,
27.4832

123.2199,
122.0858, 130.7904

■ 17.8951, 16.7775,
17.7008

154.8170,
154.0747, 165.2607

■ 10.9739, 10.0760,
10.5682

191.4006,
191.2137, 205.3105

■ 6.1165, 5.4494,
5.6668

233.3361,
233.8871, 251.3584

■ 2.9574, 2.5133,
2.5780

280.9889,

■ 1.1313, 0.8833,

282.4794, 303.8230

0.8811

334.7243,
337.3749, 363.1227

■ 0.0510, 0.0000,
0.0000

■ 0.0000, 0.0000,
0.0000

■ 54.6944, 53.1755,
56.6714

■ 54.6944, 53.1755,
56.6714

■ 48.6994, 44.0977,
45.6937

■ 61.5999, 63.7013,
69.0997

■ 43.5722, 36.3976,
36.1102

■ 69.4471, 75.7271,
83.0255

■ 39.2736, 30.0099,
27.8655

■ 78.2716, 89.3113,
98.4978

■ 35.7593, 24.8610,
20.8996

■ 81.5418, 93.0363,
108.2678

■ 32.9812, 20.8701,
15.1474

■ 30.8853, 17.9468,
10.5384

■ 29.4103, 15.9870,
6.9941

■ 28.4833, 14.8658,
4.4259

■ 28.0848, 14.4375,
3.1564

Harmonies

Analogous

The Analogous color harmony consists of three colors that are next to each other on the color wheel.



54.3516, 53.1755, 62.7484



54.6944, 53.1755, 56.6714



53.8997, 53.1755, 51.3051

Triad

The Triadic color harmony groups three colors that are evenly spaced from another and form a triangle on the color wheel.



54.6944, 53.1755, 56.6714



48.1835, 53.1755, 48.9883



48.9115, 53.1755, 69.2131

Complementary

The Complementary color scheme is a pair of colors which are on the opposite of each other on the color wheel.



54.6944, 53.1755, 56.6714



55.8069, 63.1370, 69.5699

Split Complementary

Split-complementary colors differ from the complementary color scheme. The scheme consists of three colors, the original color and two neighbors of the complement color.



47.3262, 53.1755, 65.0352



54.6944, 53.1755, 56.6714



46.9142, 53.1755, 53.3063

Square

The Square scheme is like the rectangle color scheme, but the four colors are evenly spaced on the color wheel.



54.6944, 53.1755, 56.6714



50.1112, 53.1755, 47.0728



46.6047, 53.1755, 59.1444



50.9747, 53.1755, 70.2698

Rectangle

The Rectangle color scheme consists of four colors that form a rectangle on the color wheel.



54.6944, 53.1755, 56.6714



52.8445, 53.1755, 48.7605



46.6047, 53.1755, 59.1444



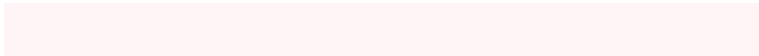
48.3069, 53.1755, 68.1136

Sweetspot

The Sweet Spot groups the original color and five complimentary colors.



54.6959, 53.1779, 56.6725



90.5619, 93.1358, 100.8927



55.9549, 53.5111, 70.9985



19.2088, 19.6673, 21.2816



0.0000, 0.0000, 0.0000



20.3446, 21.4041, 23.3091

Same Dimension

The Same Dimension uses a secret algorithm to generate beautiful new colors.



54.6959, 53.1779, 56.6725



78.4526, 74.7006, 79.0271



56.0814, 56.8138, 54.4675



12.5128, 12.4566, 13.3749



17.0026, 8.7374, 2.0517



1.0534, 0.5381, 0.2705

Inverse Universe

The Inverse Universe completely reimagines the original color for something new.



54.6959, 53.1779, 56.6725



78.4526, 74.7006, 79.0271



54.2524, 59.0223, 72.1520



12.5128, 12.4566, 13.3749



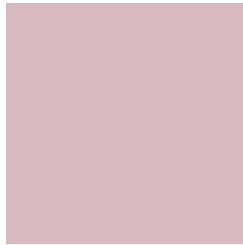
17.0026, 8.7374, 2.0517



1.0534, 0.5381, 0.2705

Previews

White Background



This preview shows how the XYZ color 54.6944, 53.1755, 56.6714 looks on a white background.

Color Contrast Check

Large Text (above 18pt) WCAG AA × Fail

Any Text WCAG AA × Fail

Large Text (above 18pt) WCAG AAA × Fail

Any Text WCAG AAA × Fail

Black Background



This preview shows how the XYZ color 54.6944, 53.1755, 56.6714 looks on a black background.

Color Contrast Check

Large Text (above 18pt) WCAG AA ✓ Pass

Any Text WCAG AA ✓ Pass

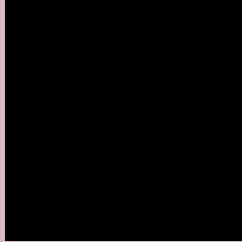
Large Text (above 18pt) WCAG AAA ✓ Pass

Any Text WCAG AAA ✓ Pass

If you want to check with other color combinations, try the [Color Contrast Checker](#).

XYZ 54.6944, 53.1755, 56.6714

Background



This preview shows how black text looks on a background with the XYZ color 54.6944, 53.1755, 56.6714.



This preview shows how white text looks on a background with the XYZ color 54.6944, 53.1755,

Color Blindness Simulation

Color vision deficiency is a very complex topic, and I could not describe the different causes any better than Wikipedia does, so if you want to learn more, you should check out their [article about color blindness](#).

Dichromacy



Original Color

54.6944, 53.1755, 56.6714

Protanopia

51.3522, 53.3301, 58.6261

Deuteranopia

54.3257, 53.2993, 56.7147



Tritanopia

55.6821, 53.2685, 61.3799

Trichromacy



Original Color

54.6944, 53.1755, 56.6714

Protanomaly

52.6677, 53.3737, 57.9783

Deuteranomaly

54.6149, 53.4484, 56.7283

Tritanomaly

55.3371, 53.1305, 59.5632

Monochromacy



Original Color

54.6944, 53.1755, 56.6714

Achromatopsia

51.8711, 54.5724, 59.4294

Achromatomaly

52.9444, 54.1509, 58.7006

CSS Examples

Text

The CSS property to change the color of the text to XYZ 54.6944, 53.1755, 56.6714 is called "color". The color property can be set on classes, ids or directly on the HTML element.

This example shows how text in the color rgb(214, 186, 191) looks like.

```
.text, #text, p{  
    color:rgb(214, 186, 191)  
}
```

If you want to add a text shadow in that color use the text-shadow property, you can generate a text shadow directly with our [CSS Text Shadow Generator](#).

Here you see how black text with a 4 pixel rgb(214, 186, 191) colored shadow looks like.

```
.shadow{ text-shadow: 4px 4px 2px rgb(214, 186, 191) }
```

Border

The CSS property to change the border of an element to XYZ 54.6944, 53.1755, 56.6714 is called "border". The border property can be set on classes, ids or directly on the HTML element.

This example shows the color as border, it can be applied via the CSS property "border" or "border-color".

```
.border, #border, table{ border:4px solid rgb(214, 186, 191) }
```


If only the border color should be changed use the property `border-color`.

```
.border{ border-color:rgb(214, 186, 191) }
```

If you want to add a box shadow in that color use:

Here you see how a box with a 4 pixel `rgb(214, 186, 191)` colored shadow looks like.

```
.boxshadow{ -moz-box-shadow:4px 4px 4px  
4px rgb(214, 186, 191); -webkit-box-  
shadow:4px 4px 4px 4px rgb(214, 186, 191);  
box-shadow:4px 4px 4px 4px rgb(214, 186,  
191) }
```

Background

The CSS property to change the background color of an element to XYZ 54.6944, 53.1755, 56.6714 is called "background". The background property can be set on classes, ids or directly on the HTML element.

```
.background, #background, body{  
background: rgb(214, 186, 191) }
```

If only the background color should be changed can be used:

```
.background{ background-color: rgb(214,  
186, 191) }
```

This example shows the color as background, it is applied via the CSS property "background".

To optimize and compress your CSS code, you can use our [online CSS compressor and optimizer](#) based on csstidy. If you want to create a linear or radial gradient as background or border, check our [CSS Gradient Generator](#).

Hey! You found this booklet interesting? Support Converting Colors with the new Membership Option!

The pro membership hides all ads, plus gives you double the colors in the color bucket, and more awesome pro features!

[Learn more, Memberships starting at \\$2.50/m!](#)

**Follow me
on Twitter!**

@ConvertingColor