

# Converting Colors

XYZ(54.8686, 50.9172, 42.8929)

Have a look what the booklet for  
XYZ(54.8686, 50.9172, 42.8929)  
contains.

<b>XYZ(54.9182, 50.8555, 42.9980)</b> .....	3
<b><i>Conversions</i></b> .....	4
<b><i>Details</i></b> .....	6
<b><i>Harmonies</i></b> .....	12
<b><i>Previews</i></b> .....	24
<b><i>Color Blindness Simulation</i></b> .....	28
<b><i>CSS Examples</i></b> .....	31

# Color

**XYZ(54.9182, 50.8555,  
42.9980)**

# Conversions

## Conversions Part 1

Format	Color
Hex	E5B1A6
RGB	229, 177, 166
RGB Percent	90%, 69%, 65%
CMY	0.1020, 0.3059, 0.3490
CMYK	0.00, 0.23, 0.28, 0.10
HSL	10°, 55%, 77%
HSV	10°, 28%, 90%
XYZ	54.9182, 50.8555, 42.9980
YIQ	191.2940, 34.5230, 7.6030

# Conversions

## Conversions Part 2

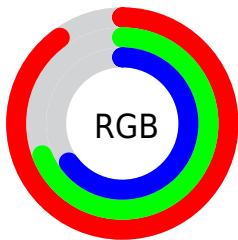
Format	Color
R <sub>Y</sub> B	229, 179, 166
Decimal	15053222
CIE Lab	76.59, 17.35, 12.91
CIE LCh	77, 21.624, 36.650
Yxy	50.8555, 0.3691, 0.3418
Android (android.graphics.Color)	4293243302 (0xFFE5B1A6)
YUV	191.2940, -12.4699, 33.0682
Hunter-Lab	71.3130, 12.6651, 14.1704

# Details

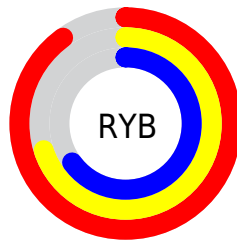
The XYZ color **54.9182, 50.8555, 42.9980** is a light color, and the websafe version is hex **CC9999**. A complement of this color would be **54.9394, 63.9050, 83.5683**, and the grayscale version is **49.7491, 52.3400, 56.9982**.

A 20% lighter version of the original color is **83.4301, 84.7583, 80.3694**, and **27.2582, 24.4009, 19.1928** is the 20% darker color. If you saturate the color by 10%, you get **49.5237, 43.1342, 31.7424**, and if you desaturate by 10%, it is **61.2065, 59.7653, 56.3979**.

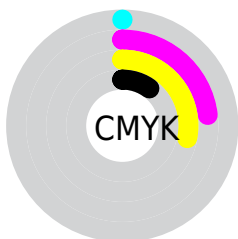
# Distribution



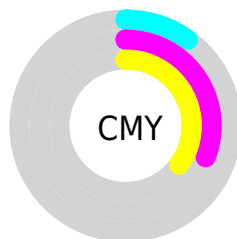
- Red (90%)
- Green (69%)
- Blue (65%)



- Red (90%)
- Yellow (70%)
- Blue (65%)



- Cyan (0%)
- Magenta (23%)
- Yellow (28%)
- Black (10%)




- Cyan (10%)
- Magenta (31%)
- Yellow (35%)


# Brightness & Saturation Gradients

These gradients show how the XYZ color 54.9182, 50.8555, 42.9980 changes by changing the brightness by 10 percent. The first figure shows a shift by +10% for each color and the second figure -10%.


Similar to the brightness gradients but the following saturation gradients show a change of the XYZ color 54.9182, 50.8555, 42.9980 by changing the saturation by 10% instead.





 54.9182, 50.8555,  
42.9980


 54.9182, 50.8555,  
42.9980

395.7432,  
390.0021, 374.5245

 39.5698, 36.0936,  
29.5522

 96.5701, 91.4411,  
80.9942

 27.3860, 24.5065,  
19.2498


 123.6044,  
118.0337, 106.3816

 18.0014, 15.7098,  
11.6722


155.2646,  
149.3386, 136.5866

 11.0507, 9.3190,  
6.4011

191.9162,  
185.7402, 172.0277

 6.1685, 4.9498,  
3.0178

233.9245,  
227.6230, 213.1235

 2.9894, 2.2179,  
1.1037

281.6549,

 1.1482, 0.7297,

275.3713, 260.2926

0.0000

335.4727,  
329.3696, 313.9534

0.0649, 0.0000,  
0.0000

0.0000, 0.0000,  
0.0000

54.9182, 50.8555,  
42.9980

54.9182, 50.8555,  
42.9980

49.5237, 43.1342,  
31.7424

61.2065, 59.7653,  
56.3979

44.9781, 36.5440,  
22.5165

68.4228, 69.9035,  
72.0426

41.2383, 31.0334,  
15.1996

76.6046, 81.3171,  
90.0296

38.2560, 26.5443,  
9.6569

85.3641, 93.8798,  
108.2292

■ 35.9775, 23.0127,  
5.7359

■ 86.1232, 95.3981,  
108.4822

■ 34.3413, 20.3673,  
3.2580

■ 33.2717, 18.5250,  
1.9858

■ 33.0720, 18.1757,  
1.7652

# Harmonies

## Analogous

The Analogous color harmony consists of three colors that are next to each other on the color wheel.



56.5682, 50.8555, 52.8079



54.9182, 50.8555, 42.9980



51.5181, 50.8555, 37.1769

# Triad

The Triadic color harmony groups three colors that are evenly spaced from another and form a triangle on the color wheel.



54.9182, 50.8555, 42.9980



41.4761, 50.8555, 46.9248



49.2522, 50.8555, 80.8652

# Complementary

The Complementary color scheme is a pair of colors which are on the opposite of each other on the color wheel.



54.9182, 50.8555, 42.9980



54.9394, 63.9050, 83.5683

# Split Complementary

Split-complementary colors differ from the complementary color scheme. The scheme consists of three colors, the original color and two neighbors of the complement color.



45.2890, 50.8555, 78.7074



54.9182, 50.8555, 42.9980



40.9450, 50.8555, 58.0198

# Square

The Square scheme is like the rectangle color scheme, but the four colors are evenly spaced on the color wheel.



54.9182, 50.8555, 42.9980



43.7967, 50.8555, 39.2108



42.3031, 50.8555, 69.9201



53.1799, 50.8555, 75.4590



# Rectangle

The Rectangle color scheme consists of four colors that form a rectangle on the color wheel.



54.9182, 50.8555, 42.9980



48.7972, 50.8555, 35.8105



42.3031, 50.8555, 69.9201



47.8789, 50.8555, 81.0106

# Sweetspot

The Sweet Spot groups the original color and five complimentary colors.



54.9196, 50.8579, 42.9990



86.7998, 88.4793, 90.7980



58.6702, 49.0192, 73.0430



18.2658, 18.4998, 18.7524



0.0000, 0.0000, 0.0000



20.3446, 21.4041, 23.3091



# Same Dimension

The Same Dimension uses a secret algorithm to generate beautiful new colors.



54.9196, 50.8579, 42.9990



66.0404, 59.1226, 46.3843



61.7523, 64.5234, 45.2766



14.5795, 14.7729, 14.9875



18.9697, 10.5136, 1.0295



1.4619, 0.8972, 0.0961



# Inverse Universe

The Inverse Universe completely reimagines the original color for something new.



54.9394, 63.9050, 83.5683



66.0607, 78.3586, 106.2507



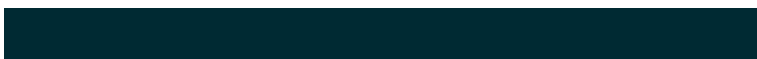
47.6396, 49.3054, 81.1350



14.5820, 15.8855, 18.4420



18.5698, 24.2017, 46.0758

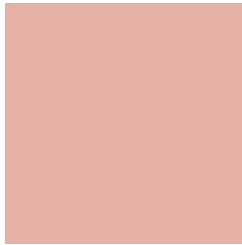


1.4288, 1.9014, 3.4237



# Previews

## White Background



This preview shows how the XYZ color 54.9182, 50.8555, 42.9980 looks on a white background.

## Color Contrast Check

Large Text (above 18pt) WCAG AA × Fail

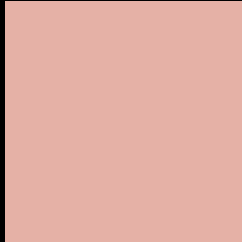
Any Text WCAG AA × Fail

Large Text (above 18pt) WCAG AAA × Fail

Any Text WCAG AAA × Fail



# Black Background



This preview shows how the XYZ color 54.9182, 50.8555, 42.9980 looks on a black background.

## Color Contrast Check

Large Text (above 18pt) WCAG AA ✓ Pass

Any Text WCAG AA ✓ Pass

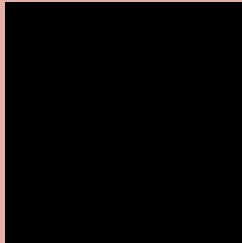
Large Text (above 18pt) WCAG AAA ✓ Pass

Any Text WCAG AAA ✓ Pass

If you want to check with other color combinations, try the [Color Contrast Checker](#).

**XYZ 54.9182, 50.8555, 42.9980**

## **Background**



This preview shows how black text looks on a background with the XYZ color 54.9182, 50.8555, 42.9980.



This preview shows how white text looks on a background with the XYZ color 54.9182, 50.8555,

42.9980.

# Color Blindness Simulation

Color vision deficiency is a very complex topic, and I could not describe the different causes any better than Wikipedia does, so if you want to learn more, you should check out their [article about color blindness](#).

## Dichromacy



### Original Color

54.9182, 50.8555, 42.9980

### Protanopia

48.6699, 51.2441, 46.3556

### Deuteranopia

51.8384, 50.7714, 42.6650



## Tritanopia

57.0607, 50.8489, 53.8211

# Trichromacy



## Original Color

54.9182, 50.8555, 42.9980

## Protanomaly

50.8992, 51.1555, 45.2215

## Deuteranomaly

52.9316, 50.7313, 42.5996

## Tritanomaly

56.0998, 50.7376, 49.4844

# Monochromacy



## Original Color

54.9182, 50.8555, 42.9980

## Achromatopsia

49.5206, 52.0996, 56.7364

## Achromatomaly

51.1792, 51.4743, 51.4941

# CSS Examples

## Text

The CSS property to change the color of the text to XYZ 54.9182, 50.8555, 42.9980 is called "color". The color property can be set on classes, ids or directly on the HTML element.

This example shows how text in the color `rgb(229, 177, 166)` looks like.

```
.text, #text, p{  
    color:rgb(229, 177, 166)  
}
```

If you want to add a text shadow in that color use the text-shadow property, you can generate a text shadow directly with our [CSS Text Shadow Generator](#).

Here you see how black text with a 4 pixel rgb(229, 177, 166) colored shadow looks like.

```
.shadow{ text-shadow: 4px 4px 2px rgb(229, 177, 166) }
```

## Border

The CSS property to change the border of an element to XYZ 54.9182, 50.8555, 42.9980 is called "border". The border property can be set on classes, ids or directly on the HTML element.

This example shows the color as border, it can be applied via the CSS property "border" or "border-color".

```
.border, #border, table{ border:4px solid rgb(229, 177, 166) }
```



If only the border color should be changed use the property `border-color`.

```
.border{ border-color:rgb(229, 177, 166) }
```

If you want to add a box shadow in that color use:

Here you see how a box with a 4 pixel `rgb(229, 177, 166)` colored shadow looks like.

```
.boxshadow{ -moz-box-shadow:4px 4px 4px  
4px rgb(229, 177, 166); -webkit-box-  
shadow:4px 4px 4px 4px rgb(229, 177, 166);  
box-shadow:4px 4px 4px 4px rgb(229, 177,  
166) }
```

# Background

The CSS property to change the background color of an element to XYZ 54.9182, 50.8555, 42.9980 is called "background". The background property can be set on classes, ids or directly on the HTML element.

```
.background, #background, body{  
background: rgb(229, 177, 166) }
```

If only the background color should be changed can be used:

```
.background{ background-color: rgb(229,  
177, 166) }
```

This example shows the color as background, it is applied via the CSS property "background".

To optimize and compress your CSS code, you can use our [online CSS compressor and optimizer](#) based on csstidy. If you want to create a linear or radial gradient as background or border, check our [CSS Gradient Generator](#).

Hey! You found this booklet interesting? Support Converting Colors with the new Membership Option!

The pro membership hides all ads, plus gives you double the colors in the color bucket, and more awesome pro features!

**[Learn more, Memberships starting at \\$2.50/m!](#)**

**Follow me  
on Twitter!**

@ConvertingColor