

Converting Colors

XYZ(54.8954, 54.4717, 54.7949)

Have a look what the booklet for
XYZ(54.8954, 54.4717, 54.7949)
contains.

XYZ(54.8237, 54.5609, 54.6555)	3
<i>Conversions</i>	4
<i>Details</i>	6
<i>Harmonies</i>	12
<i>Previews</i>	24
<i>Color Blindness Simulation</i>	28
<i>CSS Examples</i>	31

Color

**XYZ(54.8237, 54.5609,
54.6555)**

Conversions

Conversions Part 1

Format	Color
Hex	D5BEBB
RGB	213, 190, 187
RGB Percent	84%, 75%, 73%
CMY	0.1647, 0.2549, 0.2667
CMYK	0.00, 0.11, 0.12, 0.16
HSL	7°, 24%, 78%
HSV	7°, 12%, 84%
XYZ	54.8237, 54.5609, 54.6555
YIQ	196.5350, 14.6710, 3.9430

Conversions

Conversions Part 2

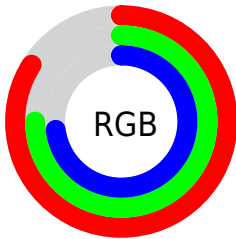
Format	Color
R _Y B	213, 190, 187
Decimal	14007995
CIE Lab	78.79, 7.64, 4.48
CIE LCh	79, 8.859, 30.372
Yxy	54.5609, 0.3342, 0.3326
Android (android.graphics.Color)	4292198075 (0xFFD5BEBB)
YUV	196.5350, -4.7008, 14.4398
Hunter-Lab	73.8654, 3.2204, 7.8350

Details

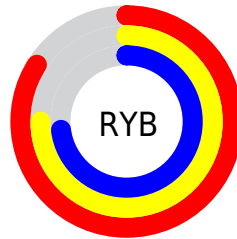
The XYZ color **54.8237, 54.5609, 54.6555** is a light color, and the websafe version is hex **CCCCCC**. A complement of this color would be **55.5501, 61.4610, 71.8868**, and the grayscale version is **52.8132, 55.5636, 60.5087**.

A 20% lighter version of the original color is **90.3734, 93.6426, 98.1057**, and **27.3493, 26.8817, 26.3015** is the 20% darker color. If you saturate the color by 10%, you get **48.8907, 46.0770, 42.2498**, and if you desaturate by 10%, it is **61.6255, 64.2398, 69.0207**.

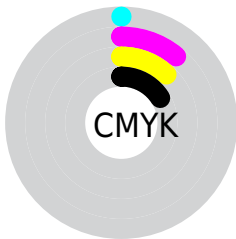
Distribution



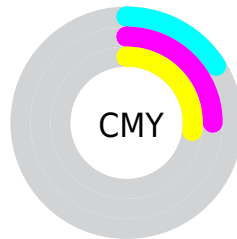
- Red (84%)
- Green (75%)
- Blue (73%)



- Red (84%)
- Yellow (75%)
- Blue (73%)



- Cyan (0%)
- Magenta (11%)
- Yellow (12%)
- Black (16%)





- Cyan (16%)
- Magenta (25%)
- Yellow (27%)

Brightness & Saturation Gradients


These gradients show how the XYZ color 54.8237, 54.5609, 54.6555 changes by changing the brightness by 10 percent. The first figure shows a shift by +10% for each color and the second figure -10%.


Similar to the brightness gradients but the following saturation gradients show a change of the XYZ color 54.8237, 54.5609, 54.6555 by changing the saturation by 10% instead.


 54.8237, 54.5609,
54.6555

 54.8237, 54.5609,
54.6555


395.3906,
404.2453, 421.8498

 39.4939, 39.0503,
38.7292


 96.4324, 96.8973,
98.5021

 27.3266, 26.7988,
26.2429

123.4420,
124.4919, 127.2595

 17.9565, 17.4222,
16.7781


155.0756,
156.8832, 161.1311

 11.0183, 10.5360,
9.9161

191.6985,
194.4557, 200.5353

 6.1465, 5.7557,
5.2385

233.6761,
237.5938, 245.8908

 2.9759, 2.6971,
2.3267

281.3738,

 1.1410, 0.9757,

286.6818, 297.6160

0.7461

335.1568,
342.1042, 356.1295

■ 0.0590, 0.0000,
0.0000

■ 0.0000, 0.0000,
0.0000

■ 54.8237, 54.5609,
54.6555

■ 54.8237, 54.5609,
54.6555

■ 48.8907, 46.0770,
42.2498

■ 61.6255, 64.2398,
69.0207

■ 43.7869, 38.7348,
31.7153

■ 69.3244, 75.1500,
85.4215

■ 39.4767, 32.4876,
22.9622

■ 77.9530, 87.3353,
103.9344

■ 35.9199, 27.2830,
15.8916

■ 81.2509, 92.8863,
108.2542

■ 33.0728, 23.0637,
10.3954

■ 30.8872, 19.7676,
6.3526

■ 29.3087, 17.3248,
3.6246

■ 28.2740, 15.6557,
2.0457

■ 27.7802, 14.8249,
1.3973

Harmonies

Analogous

The Analogous color harmony consists of three colors that are next to each other on the color wheel.



55.3055, 54.5609, 59.3449



54.8237, 54.5609, 54.6555



53.5441, 54.5609, 51.3992

Triad

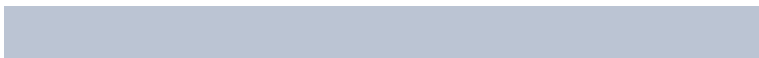
The Triadic color harmony groups three colors that are evenly spaced from another and form a triangle on the color wheel.



54.8237, 54.5609, 54.6555



48.9811, 54.5609, 54.7582



51.8804, 54.5609, 69.6015

Complementary

The Complementary color scheme is a pair of colors which are on the opposite of each other on the color wheel.



54.8237, 54.5609, 54.6555



55.5501, 61.4610, 71.8868

Split Complementary

Split-complementary colors differ from the complementary color scheme. The scheme consists of three colors, the original color and two neighbors of the complement color.



50.2086, 54.5609, 68.2074



54.8237, 54.5609, 54.6555



48.5578, 54.5609, 59.4702

Square

The Square scheme is like the rectangle color scheme, but the four colors are evenly spaced on the color wheel.



54.8237, 54.5609, 54.6555



50.1715, 54.5609, 51.4561



49.0022, 54.5609, 64.4273



53.5829, 54.5609, 68.1387

Rectangle

The Rectangle color scheme consists of four colors that form a rectangle on the color wheel.



54.8237, 54.5609, 54.6555



52.4248, 54.5609, 50.3826



49.0022, 54.5609, 64.4273



51.2963, 54.5609, 69.4506

Sweetspot

The Sweet Spot groups the original color and five complimentary colors.



54.8252, 54.5633, 54.6567



90.6401, 93.7388, 99.5423



56.8944, 54.3607, 68.7291



19.2285, 19.8191, 20.9414



0.0000, 0.0000, 0.0000



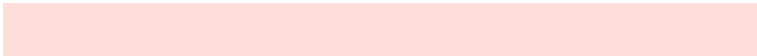
20.3446, 21.4041, 23.3091

Same Dimension

The Same Dimension uses a secret algorithm to generate beautiful new colors.



54.8252, 54.5633, 54.6567



79.6330, 78.0589, 76.3451



57.6725, 60.2579, 55.6058



12.5377, 12.6495, 12.9415



17.0075, 9.1322, 0.8663



1.0654, 0.6299, 0.0654

Inverse Universe

The Inverse Universe completely reimagines the original color for something new.



55.5501, 61.4610, 71.8868



80.9574, 90.6663, 107.8412



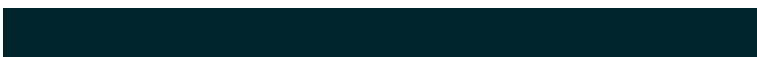
52.5617, 55.4841, 70.8907



12.6640, 13.8514, 15.9436



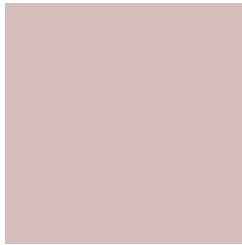
18.4210, 25.1038, 42.3278



1.1466, 1.5852, 2.5648

Previews

White Background



This preview shows how the XYZ color 54.8237, 54.5609, 54.6555 looks on a white background.

Color Contrast Check

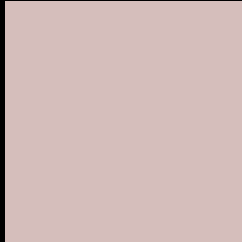
Large Text (above 18pt) WCAG AA × Fail

Any Text WCAG AA × Fail

Large Text (above 18pt) WCAG AAA × Fail

Any Text WCAG AAA × Fail

Black Background



This preview shows how the XYZ color 54.8237, 54.5609, 54.6555 looks on a black background.

Color Contrast Check

Large Text (above 18pt) WCAG AA ✓ Pass

Any Text WCAG AA ✓ Pass

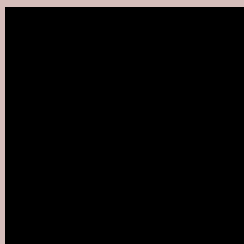
Large Text (above 18pt) WCAG AAA ✓ Pass

Any Text WCAG AAA ✓ Pass

If you want to check with other color combinations, try the [Color Contrast Checker](#).

XYZ 54.8237, 54.5609, 54.6555

Background



This preview shows how black text looks on a background with the XYZ color 54.8237, 54.5609, 54.6555.



This preview shows how white text looks on a background with the XYZ color 54.8237, 54.5609,

54.6555.

Color Blindness Simulation

Color vision deficiency is a very complex topic, and I could not describe the different causes any better than Wikipedia does, so if you want to learn more, you should check out their [article about color blindness](#).

Dichromacy



Original Color

54.8237, 54.5609, 54.6555

Protanopia

52.2965, 54.5371, 55.9145

Deuteranopia

55.7825, 54.7348, 54.6385



Tritanopia

56.6682, 54.6778, 63.4442

Trichromacy



Original Color

54.8237, 54.5609, 54.6555

Protanomaly

53.3239, 54.7499, 55.3343

Deuteranomaly

55.4861, 54.5820, 54.6246

Tritanomaly

56.0072, 54.7226, 60.4339

Monochromacy



Original Color

54.8237, 54.5609, 54.6555

Achromatopsia

53.0703, 55.8340, 60.8033

Achromatomaly

53.5460, 55.1303, 58.2711

CSS Examples

Text

The CSS property to change the color of the text to XYZ 54.8237, 54.5609, 54.6555 is called "color". The color property can be set on classes, ids or directly on the HTML element.

This example shows how text in the color `rgb(213, 190, 187)` looks like.

```
.text, #text, p{  
    color:rgb(213, 190, 187)  
}
```

If you want to add a text shadow in that color use the text-shadow property, you can generate a text shadow directly with our [CSS Text Shadow Generator](#).

Here you see how black text with a 4 pixel rgb(213, 190, 187) colored shadow looks like.

```
.shadow{ text-shadow: 4px 4px 2px rgb(213, 190, 187) }
```

Border

The CSS property to change the border of an element to XYZ 54.8237, 54.5609, 54.6555 is called "border". The border property can be set on classes, ids or directly on the HTML element.

This example shows the color as border, it can be applied via the CSS property "border" or "border-color".

```
.border, #border, table{ border:4px solid rgb(213, 190, 187) }
```


If only the border color should be changed use the property `border-color`.

```
.border{ border-color:rgb(213, 190, 187) }
```

If you want to add a box shadow in that color use:

Here you see how a box with a 4 pixel `rgb(213, 190, 187)` colored shadow looks like.

```
.boxshadow{ -moz-box-shadow:4px 4px 4px  
4px rgb(213, 190, 187); -webkit-box-  
shadow:4px 4px 4px 4px rgb(213, 190, 187);  
box-shadow:4px 4px 4px 4px rgb(213, 190,  
187) }
```

Background

The CSS property to change the background color of an element to XYZ 54.8237, 54.5609, 54.6555 is called "background". The background property can be set on classes, ids or directly on the HTML element.

```
.background, #background, body{  
background: rgb(213, 190, 187) }
```

If only the background color should be changed can be used:

```
.background{ background-color: rgb(213,  
190, 187) }
```

This example shows the color as background, it is applied via the CSS property "background".

To optimize and compress your CSS code, you can use our [online CSS compressor and optimizer](#) based on csstidy. If you want to create a linear or radial gradient as background or border, check our [CSS Gradient Generator](#).

Hey! You found this booklet interesting? Support Converting Colors with the new Membership Option!

The pro membership hides all ads, plus gives you double the colors in the color bucket, and more awesome pro features!

[Learn more, Memberships starting at \\$2.50/m!](#)

**Follow me
on Twitter!**

@ConvertingColor