

# Converting Colors

XYZ(54.9012, 52.7599, 52.0898)

Have a look what the booklet for  
XYZ(54.9012, 52.7599, 52.0898)  
contains.

<b>XYZ(54.9012, 52.7599, 52.0898)</b> .....	3
<b><i>Conversions</i></b> .....	4
<b><i>Details</i></b> .....	6
<b><i>Harmonies</i></b> .....	12
<b><i>Previews</i></b> .....	24
<b><i>Color Blindness Simulation</i></b> .....	28
<b><i>CSS Examples</i></b> .....	31

# Color

**XYZ(54.9012, 52.7599,  
52.0898)**

# Conversions

## Conversions Part 1

<b>Format</b>	<b>Color</b>
Hex	DBB8B7
RGB	219, 184, 183
RGB Percent	86%, 72%, 72%
CMY	0.1412, 0.2784, 0.2823
CMYK	0.00, 0.16, 0.16, 0.14
HSL	2°, 33%, 79%
HSV	2°, 16%, 86%
XYZ	54.9012, 52.7599, 52.0898
YIQ	194.3510, 21.1810, 7.1090

# Conversions

## Conversions Part 2

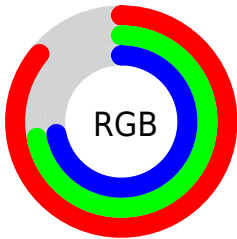
Format	Color
R <sub>Y</sub> B	219, 184, 183
Decimal	14399671
CIE Lab	77.73, 12.39, 5.19
CIE LCh	78, 13.428, 22.728
Yxy	52.7599, 0.3437, 0.3303
Android (android.graphics.Color)	4292589751 (0xFFDDBB8B7)
YUV	194.3510, -5.5960, 21.6172
Hunter-Lab	72.6360, 7.8044, 8.3263

# Details

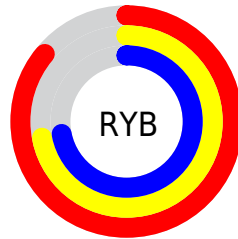
The XYZ color **54.9012, 52.7599, 52.0898** is a light color, and the websafe version is hex **FFCCCC**. A complement of this color would be **57.3858, 65.3233, 76.6027**, and the grayscale version is **51.5106, 54.1932, 59.0164**.

A 20% lighter version of the original color is **87.9801, 89.8122, 94.3598**, and **27.4554, 25.7368, 24.6397** is the 20% darker color. If you saturate the color by 10%, you get **48.7024, 43.7305, 39.6390**, and if you desaturate by 10%, it is **62.1231, 63.2669, 66.6327**.

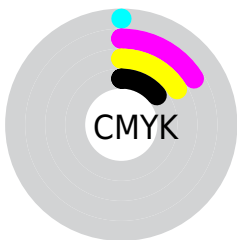
# Distribution



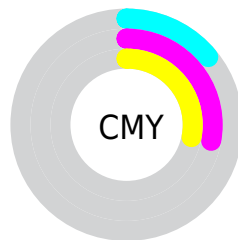
- Red (86%)
- Green (72%)
- Blue (72%)



- Red (86%)
- Yellow (72%)
- Blue (72%)



- Cyan (0%)
- Magenta (16%)
- Yellow (16%)
- Black (14%)



- Cyan (14%)
- Magenta (28%)
- Yellow (28%)


# Brightness & Saturation Gradients

These gradients show how the XYZ color 54.9012, 52.7599, 52.0898 changes by changing the brightness by 10 percent. The first figure shows a shift by +10% for each color and the second figure -10%.


Similar to the brightness gradients but the following saturation gradients show a change of the XYZ color 54.9012, 52.7599, 52.0898 by changing the saturation by 10% instead.





 54.9012, 52.7599,  
52.0898

 54.9012, 52.7599,  
52.0898


395.6798,  
397.3633, 411.7500

 39.5562, 37.6111,  
36.6939


 96.5453, 94.2510,  
94.6916

 27.3753, 25.6810,  
24.6767


123.5752,  
121.3621, 122.7346

 17.9933, 16.5852,  
15.6195


155.2306,  
153.2294, 155.8304

 11.0449, 9.9392,  
9.1039

191.8771,  
190.2373, 194.3975

 6.1645, 5.3586,  
4.7113

233.8798,  
232.7703, 238.8545

 2.9870, 2.4592,  
2.0231

281.6043,

 1.1469, 0.8561,

281.2127, 289.6198

0.5694

335.4159,  
335.9489, 347.1122

■ 0.0638, 0.0000,  
0.0000

■ 0.0000, 0.0000,  
0.0000

■ 54.9012, 52.7599,  
52.0898

■ 54.9012, 52.7599,  
52.0898

■ 48.7024, 43.7305,  
39.6390

■ 62.1231, 63.2669,  
66.6327

■ 43.4765, 36.1059,  
29.1809

■ 70.4069, 75.3062,  
83.3542

■ 39.1753, 29.8175,  
20.6132

■ 79.7946, 88.9382,  
102.3399

■ 35.7449, 24.7885,  
13.8230

■ 83.0237, 93.8002,  
108.3372

■ 33.1261, 20.9341,  
8.6855

■ 31.2518, 18.1590,  
5.0597

■ 30.0447, 16.3533,  
2.7813

■ 29.4094, 15.3831,  
1.6432

■ 29.2800, 15.1928,  
1.3893

# Harmonies

## Analogous

The Analogous color harmony consists of three colors that are next to each other on the color wheel.



55.2717, 52.7599, 59.2782



54.9012, 52.7599, 52.0898



53.2360, 52.7599, 46.7884

# Triad

The Triadic color harmony groups three colors that are evenly spaced from another and form a triangle on the color wheel.



54.9012, 52.7599, 52.0898



46.2722, 52.7599, 49.2038



49.5165, 52.7599, 72.8537

# Complementary

The Complementary color scheme is a pair of colors which are on the opposite of each other on the color wheel.



54.9012, 52.7599, 52.0898



57.3858, 65.3233, 76.6027

# Split Complementary

Split-complementary colors differ from the complementary color scheme. The scheme consists of three colors, the original color and two neighbors of the complement color.



47.1793, 52.7599, 69.6116



54.9012, 52.7599, 52.0898



45.3487, 52.7599, 55.6531

# Square

The Square scheme is like the rectangle color scheme, but the four colors are evenly spaced on the color wheel.



54.9012, 52.7599, 52.0898



48.2396, 52.7599, 45.2254



45.6749, 52.7599, 63.1585



52.1034, 52.7599, 71.6921



# Rectangle

The Rectangle color scheme consists of four colors that form a rectangle on the color wheel.



54.9012, 52.7599, 52.0898



51.6459, 52.7599, 44.8290



45.6749, 52.7599, 63.1585



48.6768, 52.7599, 72.2339

# Sweetspot

The Sweet Spot groups the original color and five complimentary colors.



54.9027, 52.7623, 52.0909



89.2373, 91.5512, 97.1692



58.8549, 54.0107, 73.9283



18.9322, 19.3511, 20.4589



0.0000, 0.0000, 0.0000



20.3446, 21.4041, 23.3091



# Same Dimension

The Same Dimension uses a secret algorithm to generate beautiful new colors.



54.9027, 52.7623, 52.0909



74.0715, 69.4845, 66.6346



58.7882, 60.5333, 53.3861



13.0850, 13.1094, 13.5663



17.3747, 9.0349, 0.8282



1.1361, 0.6063, 0.0571



# Inverse Universe

The Inverse Universe completely reimagines the original color for something new.



57.3858, 65.3233, 76.6027



78.2599, 90.6734, 107.9847



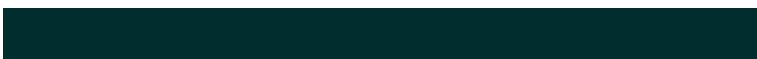
53.0624, 56.6766, 75.1615



13.4121, 14.7640, 16.7950



21.6888, 31.2470, 44.6266

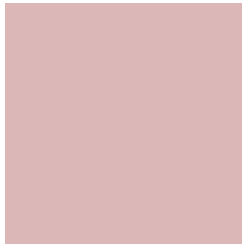


1.4151, 2.0444, 2.8945



# Previews

## White Background



This preview shows how the XYZ color 54.9012, 52.7599, 52.0898 looks on a white background.

## Color Contrast Check

Large Text (above 18pt) WCAG AA × Fail

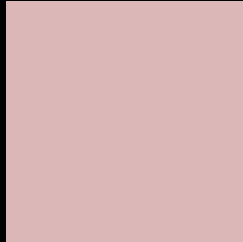
Any Text WCAG AA × Fail

Large Text (above 18pt) WCAG AAA × Fail

Any Text WCAG AAA × Fail



# Black Background



This preview shows how the XYZ color 54.9012, 52.7599, 52.0898 looks on a black background.

## Color Contrast Check

Large Text (above 18pt) WCAG AA ✓ Pass

Any Text WCAG AA ✓ Pass

Large Text (above 18pt) WCAG AAA ✓ Pass

Any Text WCAG AAA ✓ Pass

If you want to check with other color combinations, try the [Color Contrast Checker](#).

**XYZ 54.9012, 52.7599, 52.0898**

## **Background**



This preview shows how black text looks on a background with the XYZ color 54.9012, 52.7599, 52.0898.



This preview shows how white text looks on a background with the XYZ color 54.9012, 52.7599,



# Color Blindness Simulation

Color vision deficiency is a very complex topic, and I could not describe the different causes any better than Wikipedia does, so if you want to learn more, you should check out their [article about color blindness](#).

## Dichromacy



### Original Color

54.9012, 52.7599, 52.0898

### Protanopia

50.6264, 52.7198, 54.5213

### Deuteranopia

53.8377, 52.8329, 52.1600



## Tritanopia

56.5105, 52.8136, 59.4402

# Trichromacy



## Original Color

54.9012, 52.7599, 52.0898

## Protanomaly

52.0230, 52.4907, 53.8442

## Deuteranomaly

54.2151, 52.7158, 52.1175

## Tritanomaly

55.8527, 52.8442, 56.5464

# Monochromacy



## Original Color

54.9012, 52.7599, 52.0898

## Achromatopsia

51.2775, 53.9479, 58.7493

## Achromatomaly

52.3363, 53.2411, 56.2333

# CSS Examples

## Text

The CSS property to change the color of the text to XYZ 54.9012, 52.7599, 52.0898 is called "color". The color property can be set on classes, ids or directly on the HTML element.

This example shows how text in the color rgb(219, 184, 183) looks like.

```
.text, #text, p{  
    color:rgb(219, 184, 183)  
}
```

If you want to add a text shadow in that color use the text-shadow property, you can generate a text shadow directly with our [CSS Text Shadow Generator](#).

Here you see how black text with a 4 pixel rgb(219, 184, 183) colored shadow looks like.

```
.shadow{ text-shadow: 4px 4px 2px rgb(219, 184, 183) }
```

## Border

The CSS property to change the border of an element to XYZ 54.9012, 52.7599, 52.0898 is called "border". The border property can be set on classes, ids or directly on the HTML element.

This example shows the color as border, it can be applied via the CSS property "border" or "border-color".

```
.border, #border, table{ border:4px solid rgb(219, 184, 183) }
```



If only the border color should be changed use the property `border-color`.

```
.border{ border-color:rgb(219, 184, 183) }
```

If you want to add a box shadow in that color use:

Here you see how a box with a 4 pixel `rgb(219, 184, 183)` colored shadow looks like.

```
.boxshadow{ -moz-box-shadow:4px 4px 4px  
4px rgb(219, 184, 183); -webkit-box-  
shadow:4px 4px 4px 4px rgb(219, 184, 183);  
box-shadow:4px 4px 4px 4px rgb(219, 184,  
183) }
```

# Background

The CSS property to change the background color of an element to XYZ 54.9012, 52.7599, 52.0898 is called "background". The background property can be set on classes, ids or directly on the HTML element.

```
.background, #background, body{  
background: rgb(219, 184, 183) }
```

If only the background color should be changed can be used:

```
.background{ background-color: rgb(219,  
184, 183) }
```

This example shows the color as background, it is applied via the CSS property "background".

To optimize and compress your CSS code, you can use our [online CSS compressor and optimizer](#) based on csstidy. If you want to create a linear or radial gradient as background or border, check our [CSS Gradient Generator](#).

Hey! You found this booklet interesting? Support Converting Colors with the new Membership Option!

The pro membership hides all ads, plus gives you double the colors in the color bucket, and more awesome pro features!

**[Learn more, Memberships starting at \\$2.50/m!](#)**

**Follow me  
on Twitter!**

@ConvertingColor