

Converting Colors

XYZ(54.9116, 55.8017, 53.2986)

Have a look what the booklet for
XYZ(54.9116, 55.8017, 53.2986)
contains.

XYZ(55.0949, 56.0413, 53.2606)	3
<i>Conversions</i>	4
<i>Details</i>	6
<i>Harmonies</i>	12
<i>Previews</i>	24
<i>Color Blindness Simulation</i>	28
<i>CSS Examples</i>	31

Color

**XYZ(55.0949, 56.0413,
53.2606)**

Conversions

Conversions Part 1

Format	Color
Hex	D4C2B8
RGB	212, 194, 184
RGB Percent	83%, 76%, 72%
CMY	0.1686, 0.2392, 0.2784
CMYK	0.00, 0.08, 0.13, 0.17
HSL	21°, 25%, 78%
HSV	21°, 13%, 83%
XYZ	55.0949, 56.0413, 53.2606
YIQ	198.2420, 13.9380, 0.7060

Conversions

Conversions Part 2

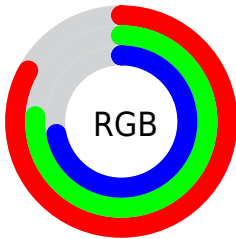
Format	Color
R _Y B	212, 200, 184
Decimal	13943480
CIE Lab	79.64, 4.67, 7.31
CIE LCh	80, 8.671, 57.442
Yxy	56.0413, 0.3351, 0.3409
Android (android.graphics.Color)	4292133560 (0xFFD4C2B8)
YUV	198.2420, -7.0213, 12.0658
Hunter-Lab	74.8607, 0.3635, 10.2199

Details

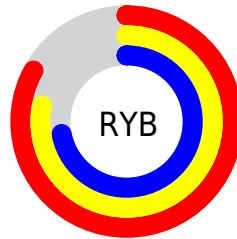
The XYZ color **55.0949, 56.0413, 53.2606** is a light color, and the websafe version is hex **CCCCCC**. A complement of this color would be **52.7711, 57.1838, 70.5442**, and the grayscale version is **53.8604, 56.6653, 61.7085**.

A 20% lighter version of the original color is **91.1538, 95.9225, 96.1486**, and **27.3794, 27.5630, 25.3499** is the 20% darker color. If you saturate the color by 10%, you get **50.1427, 49.4303, 41.4553**, and if you desaturate by 10%, it is **60.6614, 63.3466, 66.9151**.

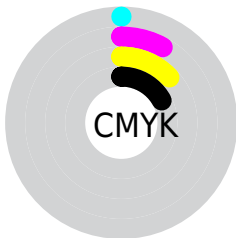
Distribution



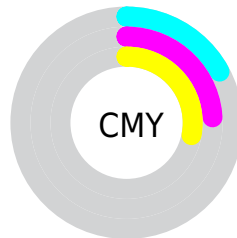
- Red (83%)
- Green (76%)
- Blue (72%)



- Red (83%)
- Yellow (78%)
- Blue (72%)



- Cyan (0%)
- Magenta (8%)
- Yellow (13%)
- Black (17%)



- Cyan (17%)
- Magenta (24%)
- Yellow (28%)

Brightness & Saturation Gradients

These gradients show how the XYZ color 55.0949, 56.0413, 53.2606 changes by changing the brightness by 10 percent. The first figure shows a shift by +10% for each color and the second figure -10%.

Similar to the brightness gradients but the following saturation gradients show a change of the XYZ color 55.0949, 56.0413, 53.2606 by changing the saturation by 10% instead.

■ 55.0949, 56.0413,
53.2606

■ 55.0949, 56.0413,
53.2606

396.4021,
409.8471, 416.3788

■ 39.7119, 40.2360,
37.6217

■ 96.8275, 99.0650,
96.4332

■ 27.4972, 27.7226,
25.3897

123.9078,
127.0521, 124.8039

■ 18.0855, 18.1167,
16.1459

155.6178,
159.8688, 158.2557

■ 11.1114, 11.0338,
9.4720

192.3230,
197.8992, 197.2070

■ 6.2097, 6.0896,
4.9493

234.3886,
241.5279, 242.0764

■ 3.0149, 2.8996,
2.1593

282.1801,

■ 1.1616, 1.0796,

291.1391, 293.2825

0.6508

336.0629,
347.1174, 351.2438

■ 0.0757, 0.0000,
0.0000

■ 0.0000, 0.0000,
0.0000

■ 55.0949, 56.0413,
53.2606

■ 55.0949, 56.0413,
53.2606

■ 50.1427, 49.4303,
41.4553

■ 60.6614, 63.3466,
66.9151

■ 45.7779, 43.4855,
31.4153

■ 66.8585, 71.3587,
82.4905

■ 41.9784, 38.1874,
23.0556

■ 73.7077, 80.0990,
100.0591

■ 38.7189, 33.5130,
16.2828

■ 78.9254, 88.6646,
107.5619

■ 35.9719, 29.4375,
10.9940

■ 80.9616, 92.7372,
108.2407

■ 33.7071, 25.9344,
7.0742

■ 31.8904, 22.9750,
4.3911

■ 30.4821, 20.5270,
2.7854

■ 29.7185, 19.1309,
2.1263

Harmonies

Analogous

The Analogous color harmony consists of three colors that are next to each other on the color wheel.



56.3045, 56.0413, 56.6900



55.0949, 56.0413, 53.2606



53.4157, 56.0413, 51.8995

Triad

The Triadic color harmony groups three colors that are evenly spaced from another and form a triangle on the color wheel.



55.0949, 56.0413, 53.2606



49.9779, 56.0413, 60.5908



54.8296, 56.0413, 69.9670

Complementary

The Complementary color scheme is a pair of colors which are on the opposite of each other on the color wheel.



55.0949, 56.0413, 53.2606



52.7711, 57.1838, 70.5442

Split Complementary

Split-complementary colors differ from the complementary color scheme. The scheme consists of three colors, the original color and two neighbors of the complement color.



53.1157, 56.0413, 71.1497



55.0949, 56.0413, 53.2606



50.3380, 56.0413, 65.5639

Square

The Square scheme is like the rectangle color scheme, but the four colors are evenly spaced on the color wheel.



55.0949, 56.0413, 53.2606



50.4826, 56.0413, 55.9845



51.4772, 56.0413, 69.4974



56.1490, 56.0413, 66.3476

Rectangle

The Rectangle color scheme consists of four colors that form a rectangle on the color wheel.



55.0949, 56.0413, 53.2606



52.2645, 56.0413, 52.2892



51.4772, 56.0413, 69.4974



54.2794, 56.0413, 70.6711

Sweetspot

The Sweet Spot groups the original color and five complimentary colors.



55.0964, 56.0438, 53.2618



91.3951, 95.2487, 99.7940



54.9769, 52.5525, 63.2481



19.4189, 20.2001, 21.0049



0.0000, 0.0000, 0.0000



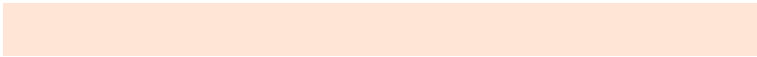
20.3446, 21.4041, 23.3091

Same Dimension

The Same Dimension uses a secret algorithm to generate beautiful new colors.



55.0964, 56.0438, 53.2618



81.3608, 82.0406, 75.2996



58.3109, 62.4727, 54.3333



12.7827, 13.1397, 13.0232



18.4329, 11.9830, 1.3414



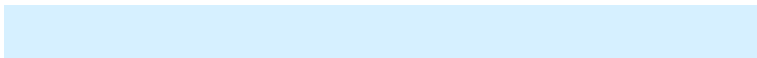
1.1888, 0.8768, 0.1066

Inverse Universe

The Inverse Universe completely reimagines the original color for something new.



52.7711, 57.1838, 70.5442



77.1247, 84.1157, 106.7788



49.6775, 50.9965, 69.5130



12.4016, 13.3266, 15.8562



12.8917, 14.0451, 40.4847



0.8545, 1.0010, 2.4675

Previews

White Background



This preview shows how the XYZ color 55.0949, 56.0413, 53.2606 looks on a white background.

Color Contrast Check

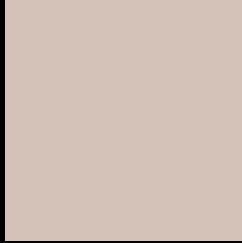
Large Text (above 18pt) WCAG AA × Fail

Any Text WCAG AA × Fail

Large Text (above 18pt) WCAG AAA × Fail

Any Text WCAG AAA × Fail

Black Background



This preview shows how the XYZ color 55.0949, 56.0413, 53.2606 looks on a black background.

Color Contrast Check

Large Text (above 18pt) WCAG AA ✓ Pass

Any Text WCAG AA ✓ Pass

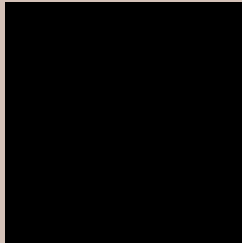
Large Text (above 18pt) WCAG AAA ✓ Pass

Any Text WCAG AAA ✓ Pass

If you want to check with other color combinations, try the [Color Contrast Checker](#).

XYZ 55.0949, 56.0413, 53.2606

Background



This preview shows how black text looks on a background with the XYZ color 55.0949, 56.0413, 53.2606.



This preview shows how white text looks on a background with the XYZ color 55.0949, 56.0413,

Color Blindness Simulation

Color vision deficiency is a very complex topic, and I could not describe the different causes any better than Wikipedia does, so if you want to learn more, you should check out their [article about color blindness](#).

Dichromacy



Original Color

55.0949, 56.0413, 53.2606

Protanopia

53.6250, 56.2727, 53.9343

Deuteranopia

57.2066, 56.1365, 53.7193



Tritanopia

57.7957, 56.1649, 66.1873

Trichromacy



Original Color

55.0949, 56.0413, 53.2606

Protanomaly

54.2290, 56.2480, 53.8977

Deuteranomaly

56.5200, 56.1075, 53.7498

Tritanomaly

56.7742, 56.0726, 61.2569

Monochromacy



Original Color

55.0949, 56.0413, 53.2606

Achromatopsia

53.6758, 56.4712, 61.4971

Achromatomaly

54.2205, 56.4793, 58.4959

CSS Examples

Text

The CSS property to change the color of the text to XYZ 55.0949, 56.0413, 53.2606 is called "color". The color property can be set on classes, ids or directly on the HTML element.

This example shows how text in the color `rgb(212, 194, 184)` looks like.

```
.text, #text, p{  
    color:rgb(212, 194, 184)  
}
```

If you want to add a text shadow in that color use the text-shadow property, you can generate a text shadow directly with our [CSS Text Shadow Generator](#).

Here you see how black text with a 4 pixel rgb(212, 194, 184) colored shadow looks like.

```
.shadow{ text-shadow: 4px 4px 2px rgb(212, 194, 184) }
```

Border

The CSS property to change the border of an element to XYZ 55.0949, 56.0413, 53.2606 is called "border". The border property can be set on classes, ids or directly on the HTML element.

This example shows the color as border, it can be applied via the CSS property "border" or "border-color".

```
.border, #border, table{ border:4px solid rgb(212, 194, 184) }
```


If only the border color should be changed use the property `border-color`.

```
.border{ border-color:rgb(212, 194, 184) }
```

If you want to add a box shadow in that color use:

Here you see how a box with a 4 pixel `rgb(212, 194, 184)` colored shadow looks like.

```
.boxshadow{ -moz-box-shadow:4px 4px 4px  
4px rgb(212, 194, 184); -webkit-box-  
shadow:4px 4px 4px 4px rgb(212, 194, 184);  
box-shadow:4px 4px 4px 4px rgb(212, 194,  
184) }
```

Background

The CSS property to change the background color of an element to XYZ 55.0949, 56.0413, 53.2606 is called "background". The background property can be set on classes, ids or directly on the HTML element.

```
.background, #background, body{  
background: rgb(212, 194, 184) }
```

If only the background color should be changed can be used:

```
.background{ background-color: rgb(212,  
194, 184) }
```

This example shows the color as background, it is applied via the CSS property "background".

To optimize and compress your CSS code, you can use our [online CSS compressor and optimizer](#) based on csstidy. If you want to create a linear or radial gradient as background or border, check our [CSS Gradient Generator](#).

Hey! You found this booklet interesting? Support Converting Colors with the new Membership Option!

The pro membership hides all ads, plus gives you double the colors in the color bucket, and more awesome pro features!

[Learn more, Memberships starting at \\$2.50/m!](#)

**Follow me
on Twitter!**

@ConvertingColor