

# Converting Colors

XYZ(54.9275, 53.8154, 48.2417)

Have a look what the booklet for  
XYZ(54.9275, 53.8154, 48.2417)  
contains.

<b>XYZ(55.0234, 53.8514, 48.0518)</b> .....	3
<b><i>Conversions</i></b> .....	4
<b><i>Details</i></b> .....	6
<b><i>Harmonies</i></b> .....	12
<b><i>Previews</i></b> .....	24
<b><i>Color Blindness Simulation</i></b> .....	28
<b><i>CSS Examples</i></b> .....	31

# Color

**XYZ(55.0234, 53.8514,  
48.0518)**

# Conversions

## Conversions Part 1

Format	Color
Hex	DCBBAF
RGB	220, 187, 175
RGB Percent	86%, 73%, 69%
CMY	0.1373, 0.2666, 0.3137
CMYK	0.00, 0.15, 0.20, 0.14
HSL	16°, 39%, 77%
HSV	16°, 20%, 86%
XYZ	55.0234, 53.8514, 48.0518
YIQ	195.4990, 23.5200, 3.2640

# Conversions

## Conversions Part 2

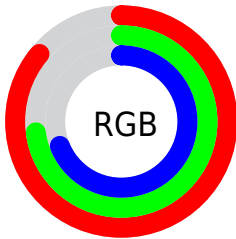
<b>Format</b>	<b>Color</b>
<b>R<sub>YB</sub></b>	220, 191, 175
Decimal	14465967
CIE Lab	78.38, 9.93, 10.45
CIE LCh	78, 14.410, 46.460
Yxy	53.8514, 0.3506, 0.3432
Android (android.graphics.Color)	4292656047 (0xFFDCBBAF)
YUV	195.4990, -10.1060, 21.4874
Hunter-Lab	73.3835, 5.4192, 12.5451

# Details

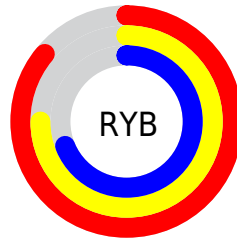
The XYZ color **55.0234, 53.8514, 48.0518** is a light color, and the websafe version is hex **FFCCCC**. A complement of this color would be **53.1530, 59.3917, 76.3729**, and the grayscale version is **52.2193, 54.9388, 59.8283**.

A 20% lighter version of the original color is **87.7144, 91.1307, 88.5682**, and **27.4101, 26.3728, 22.3847** is the 20% darker color. If you saturate the color by 10%, you get **49.8044, 46.5939, 36.5062**, and if you desaturate by 10%, it is **60.9819, 62.0235, 61.5819**.

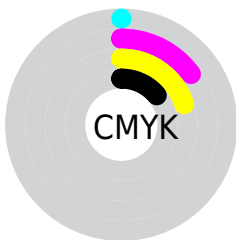
# Distribution



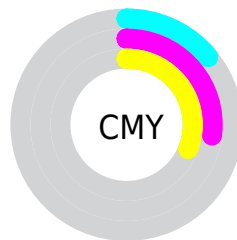
- Red (86%)
- Green (73%)
- Blue (69%)



- Red (86%)
- Yellow (75%)
- Blue (69%)



- Cyan (0%)
- Magenta (15%)
- Yellow (20%)
- Black (14%)



- Cyan (14%)
- Magenta (27%)
- Yellow (31%)

# Brightness & Saturation Gradients

These gradients show how the XYZ color 55.0234, 53.8514, 48.0518 changes by changing the brightness by 10 percent. The first figure shows a shift by +10% for each color and the second figure -10%.

Similar to the brightness gradients but the following saturation gradients show a change of the XYZ color 55.0234, 53.8514, 48.0518 by changing the saturation by 10% instead.



■ 55.0234, 53.8514,  
48.0518

■ 55.0234, 53.8514,  
48.0518

396.1356,  
401.5431, 395.5120

■ 39.6544, 38.4829,  
33.5076

■ 96.7234, 95.8560,  
88.6479

■ 27.4522, 26.3577,  
22.2413

123.7850,  
123.2609, 115.5369

■ 18.0515, 17.0914,  
13.8343

155.4749,  
155.4467, 147.3779

■ 11.0868, 10.2997,  
7.8681

192.1584,  
192.7978, 184.5894

■ 6.1930, 5.5981,  
3.9241

234.2009,  
235.6986, 227.5901

■ 3.0046, 2.6023,  
1.5838

281.9677,

■ 1.1562, 0.9278,

284.5335, 276.7984

0.2792

335.8241,  
339.6868, 332.6329

■ 0.0713, 0.0000,  
0.0000

■ 0.0000, 0.0000,  
0.0000

■ 55.0234, 53.8514,  
48.0518

■ 55.0234, 53.8514,  
48.0518

■ 49.8044, 46.5939,  
36.5062

■ 60.9819, 62.0235,  
61.5819

■ 45.2907, 40.2115,  
26.8477

■ 67.7033, 71.1334,  
77.1807

■ 41.4522, 34.6727,  
18.9761

■ 75.2157, 81.2124,  
94.9317

■ 38.2543, 29.9410,  
12.7801

■ 82.2287, 91.7623,  
107.9857

■ 35.6596, 25.9774,  
8.1359

■ 83.3254, 93.9557,  
108.3513

■ 33.6259, 22.7391,  
4.9024

■ 32.1052, 20.1789,  
2.9123

■ 31.0633, 18.3115,  
1.8973

# Harmonies

## Analogous

The Analogous color harmony consists of three colors that are next to each other on the color wheel.



56.5800, 53.8514, 54.3308



55.0234, 53.8514, 48.0518



52.4683, 53.8514, 44.7562

# Triad

The Triadic color harmony groups three colors that are evenly spaced from another and form a triangle on the color wheel.



55.0234, 53.8514, 48.0518



46.0758, 53.8514, 55.0628



52.7409, 53.8514, 74.8798

# Complementary

The Complementary color scheme is a pair of colors which are on the opposite of each other on the color wheel.



55.0234, 53.8514, 48.0518



53.1530, 59.3917, 76.3729

# Split Complementary

Split-complementary colors differ from the complementary color scheme. The scheme consists of three colors, the original color and two neighbors of the complement color.



49.9211, 53.8514, 75.1219



55.0234, 53.8514, 48.0518



46.1428, 53.8514, 63.1608

# Square

The Square scheme is like the rectangle color scheme, but the four colors are evenly spaced on the color wheel.



55.0234, 53.8514, 48.0518



47.3415, 53.8514, 48.5450



47.5278, 53.8514, 70.6682



55.2293, 53.8514, 70.0344



# Rectangle

The Rectangle color scheme consists of four colors that form a rectangle on the color wheel.



55.0234, 53.8514, 48.0518



50.5746, 53.8514, 44.4778



47.5278, 53.8514, 70.6682



51.7986, 53.8514, 75.5166

# Sweetspot

The Sweet Spot groups the original color and five complimentary colors.



55.0249, 53.8538, 48.0529



89.2086, 92.1033, 95.2805



56.2309, 50.4304, 66.4454



18.9634, 19.5362, 20.0906



0.0000, 0.0000, 0.0000



20.3446, 21.4041, 23.3091



# Same Dimension

The Same Dimension uses a secret algorithm to generate beautiful new colors.



55.0249, 53.8538, 48.0529



73.2898, 70.2691, 59.1351



60.1770, 64.1580, 49.7703



13.3372, 13.6137, 13.6503



18.3092, 10.9039, 1.1397



1.2567, 0.8474, 0.0973

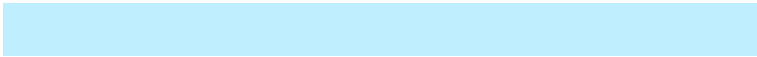


# Inverse Universe

The Inverse Universe completely reimagines the original color for something new.



53.1530, 59.3917, 76.3729



70.1717, 79.4746, 106.2494



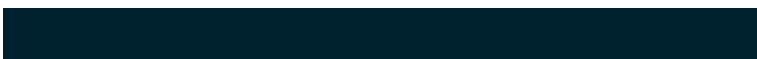
48.0519, 49.1895, 74.6725



13.1358, 14.2113, 16.7029



15.1897, 18.2488, 42.4602



1.0534, 1.3210, 2.7739



# Previews

## White Background



This preview shows how the XYZ color 55.0234, 53.8514, 48.0518 looks on a white background.

## Color Contrast Check

Large Text (above 18pt) WCAG AA × Fail

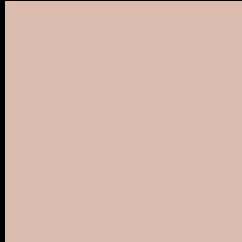
Any Text WCAG AA × Fail

Large Text (above 18pt) WCAG AAA × Fail

Any Text WCAG AAA × Fail



# Black Background



This preview shows how the XYZ color 55.0234, 53.8514, 48.0518 looks on a black background.

## Color Contrast Check

Large Text (above 18pt) WCAG AA ✓ Pass

Any Text WCAG AA ✓ Pass

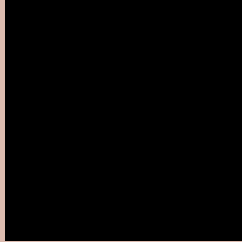
Large Text (above 18pt) WCAG AAA ✓ Pass

Any Text WCAG AAA ✓ Pass

If you want to check with other color combinations, try the [Color Contrast Checker](#).

**XYZ 55.0234, 53.8514, 48.0518**

## **Background**



This preview shows how black text looks on a background with the XYZ color 55.0234, 53.8514, 48.0518.



This preview shows how white text looks on a background with the XYZ color 55.0234, 53.8514,



# Color Blindness Simulation

Color vision deficiency is a very complex topic, and I could not describe the different causes any better than Wikipedia does, so if you want to learn more, you should check out their [article about color blindness](#).

## Dichromacy



### Original Color

55.0234, 53.8514, 48.0518

### Protanopia

51.1932, 53.7718, 49.8003

### Deuteranopia

55.0234, 53.8514, 48.0518



## Tritanopia

57.7650, 54.0462, 60.8135

# Trichromacy



## Original Color

55.0234, 53.8514, 48.0518

## Protanomaly

52.5790, 53.8458, 49.2170

## Deuteranomaly

55.0234, 53.8514, 48.0518

## Tritanomaly

56.7674, 53.9452, 56.1357

# Monochromacy



## Original Color

55.0234, 53.8514, 48.0518

## Achromatopsia

52.4687, 55.2011, 60.1140

## Achromatomaly

53.3239, 54.7499, 55.3343

# CSS Examples

## Text

The CSS property to change the color of the text to XYZ 55.0234, 53.8514, 48.0518 is called "color". The color property can be set on classes, ids or directly on the HTML element.

This example shows how text in the color `rgb(220, 187, 175)` looks like.

```
.text, #text, p{  
    color:rgb(220, 187, 175)  
}
```

If you want to add a text shadow in that color use the text-shadow property, you can generate a text shadow directly with our [CSS Text Shadow Generator](#).

Here you see how black text with a 4 pixel rgb(220, 187, 175) colored shadow looks like.

```
.shadow{ text-shadow: 4px 4px 2px rgb(220, 187, 175) }
```

## Border

The CSS property to change the border of an element to XYZ 55.0234, 53.8514, 48.0518 is called "border". The border property can be set on classes, ids or directly on the HTML element.

This example shows the color as border, it can be applied via the CSS property "border" or "border-color".

```
.border, #border, table{ border:4px solid rgb(220, 187, 175) }
```



If only the border color should be changed use the property `border-color`.

```
.border{ border-color:rgb(220, 187, 175) }
```

If you want to add a box shadow in that color use:

Here you see how a box with a 4 pixel `rgb(220, 187, 175)` colored shadow looks like.

```
.boxshadow{ -moz-box-shadow:4px 4px 4px  
4px rgb(220, 187, 175); -webkit-box-  
shadow:4px 4px 4px 4px rgb(220, 187, 175);  
box-shadow:4px 4px 4px 4px rgb(220, 187,  
175) }
```

# Background

The CSS property to change the background color of an element to XYZ 55.0234, 53.8514, 48.0518 is called "background". The background property can be set on classes, ids or directly on the HTML element.

```
.background, #background, body{  
background: rgb(220, 187, 175) }
```

If only the background color should be changed can be used:

```
.background{ background-color: rgb(220,  
187, 175) }
```

This example shows the color as background, it is applied via the CSS property "background".

To optimize and compress your CSS code, you can use our [online CSS compressor and optimizer](#) based on csstidy. If you want to create a linear or radial gradient as background or border, check our [CSS Gradient Generator](#).

Hey! You found this booklet interesting? Support Converting Colors with the new Membership Option!

The pro membership hides all ads, plus gives you double the colors in the color bucket, and more awesome pro features!

**[Learn more, Memberships starting at \\$2.50/m!](#)**

**Follow me  
on Twitter!**

@ConvertingColor